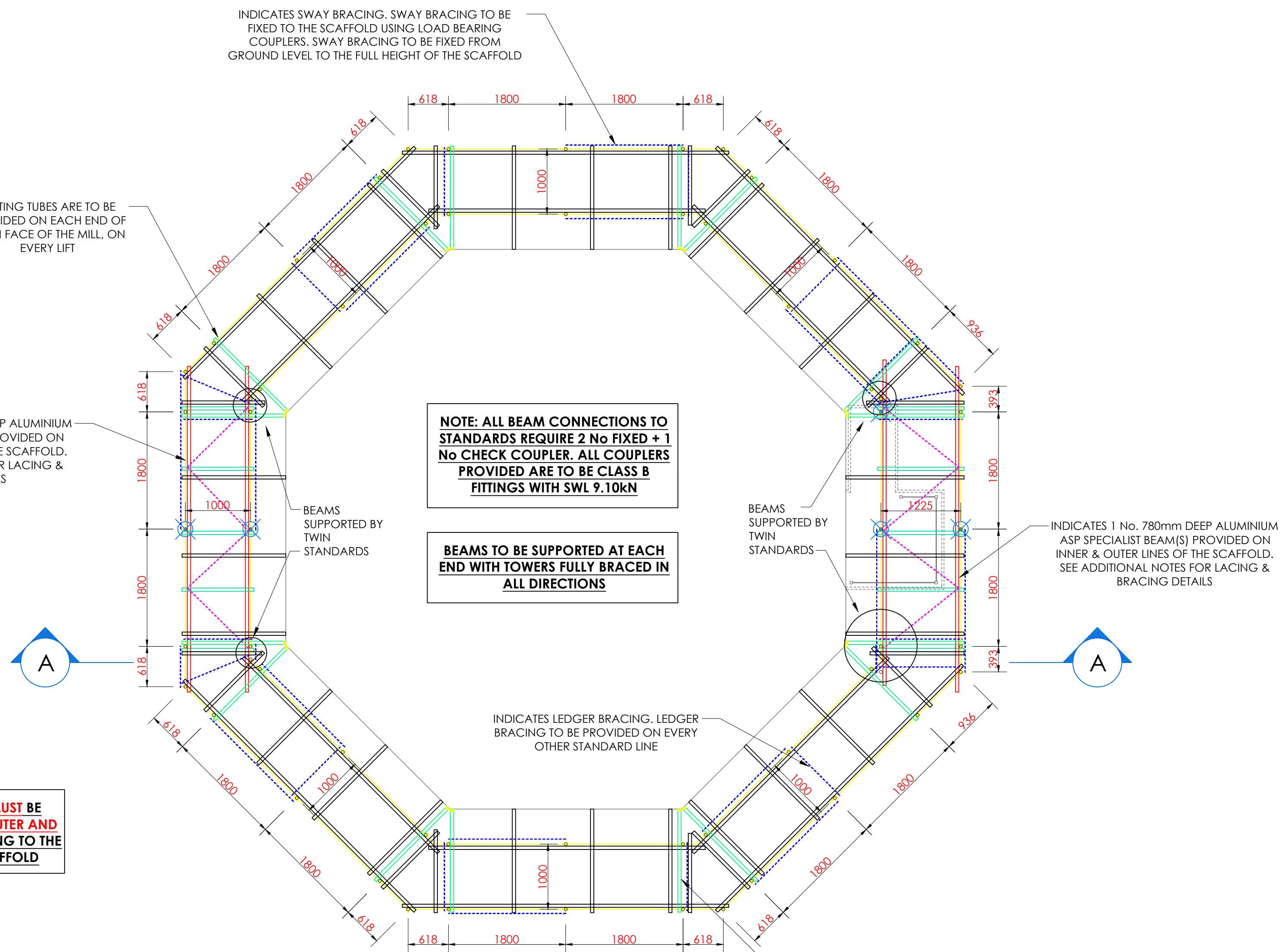


Ground Level Setting Out Plan  
(Scale 1:50)



Beam Level Setting Out Plan  
(Scale 1:50)

**NOTE: SWAY BRACING MUST BE PROVIDED ON BOTH THE OUTER AND INNER LINES OF SCAFFOLDING TO THE FULL HEIGHT OF THE SCAFFOLD**

**19.30 kN  
MAXIMUM  
LEG LOAD**

**5.69 kN  
MAX BUTTING  
LOAD**

**450mm DEEP ALUMINIUM BEAMS**

THE TOP CHORD OF THE BEAMS ARE TO BE LACED @ 1.0m CRS MAXIMUM AND THE BOTTOM CHORD IS TO BE LACED @ 2.0m CRS MAXIMUM. PLAN BRACING IS TO BE TO THE TOP CHORD OF THE BEAM @ 1.0m CRS MAXIMUM. ALL LACING & BRACING SHOULD BE FIXED USING LOAD BEARING COUPLERS

**THE ENTIRE SCAFFOLD IS TO BE CLAD USING DEBRIS NETTING. CLADDING IS TO BE FIXED STRICTLY IN ACCORDANCE TO THE MANUFACTURERS SPECIFICATIONS / RECOMMENDATIONS**

**MAIN CONTRACTOR**

1) TO APPROVE LAYOUT AND LOADINGS ALLOWED BEFORE SCAFFOLD ERECTION

2) TO ENSURE THE BASE, GROUND, BUILDING FENESTRATION'S ARE CAPABLE OF ACCEPTING ALL IMPOSED LOADS

