

AREA: 48m<sup>2</sup>  
VOL: 48m<sup>3</sup>  
TURNOVER: 1.5 hours  
PLANTROOM: 32m<sup>2</sup>/14  
BACKWASH FLOW: 355m<sup>3</sup>/hr

FILTRATION PLANT IDENTIFICATION TABLE	
ID	DESCRIPTION
P01A+B	MAIN CIRCULATING PUMPS
P03	FEATURE PUMP PUMP
P07A+B	CIRC. PUMP STRAINER
P07A+B	81.4m GRP FILTER VESSEL
H001	PLANT HEAT EXCHANGER
D101	PELLET PRO UNIT
D102	CO2 CYLINDERS
E001	ELECTRIC CONTROL PANEL
E001	SAMPLE BOARD
SB01	SAFETY SHOWER
OWS	OWS MAKE-UP ASSEMBLY

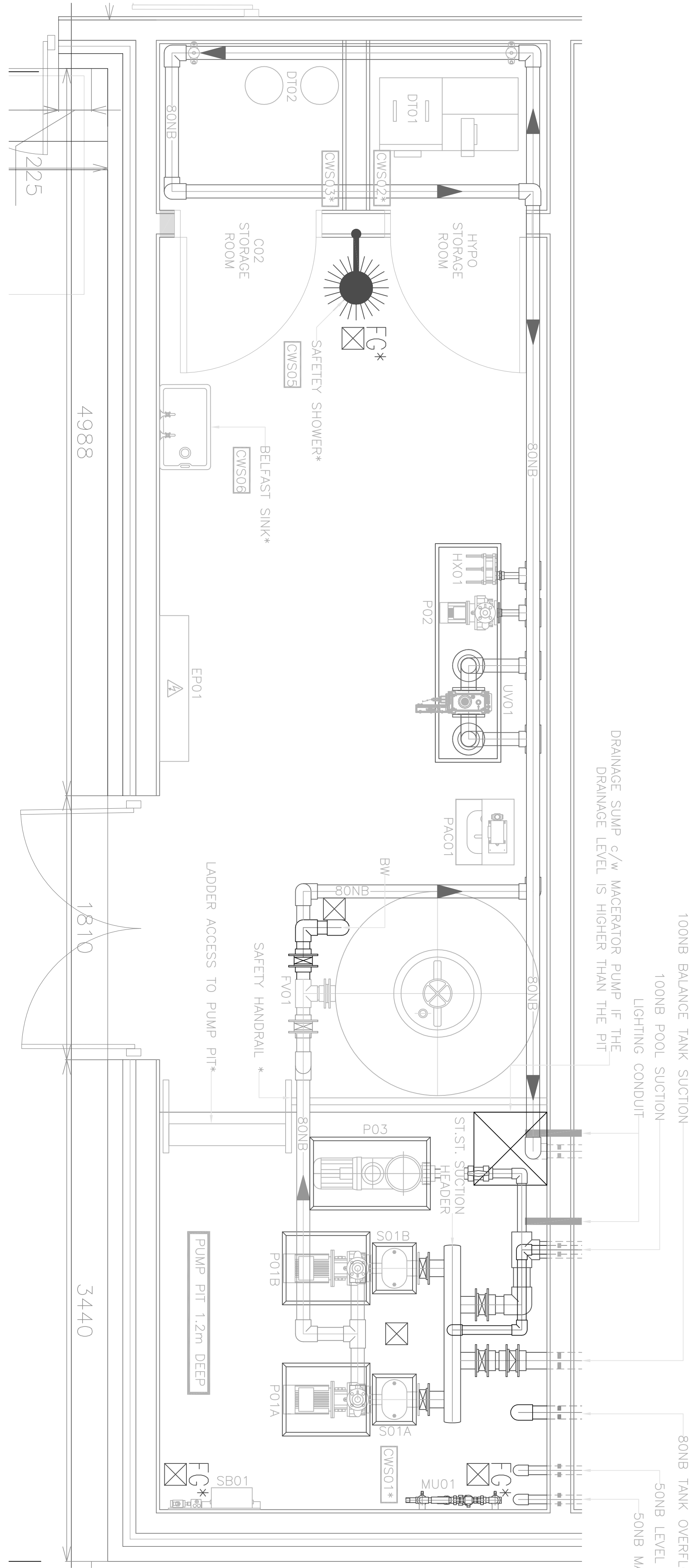
PLEASE NOTE:

- FEATURES HAVE YET TO BE CONFIRMED. A SMALL SPACE HAS BEEN ALLOWED FOR ADDITIONAL TO BE REVIEWED DEPENDING ON WHAT FEATURES ARE CHOSEN
- PIPEROWK IS INDICATIVE AND WITH REQUIRE CO-ORDINATION WITH ARCHITECT AND ALL OTHER RELEVANT PARTIES.
- PLEASE READ IN CONJUNCTION WITH THE FOLLOWING DETAILS:

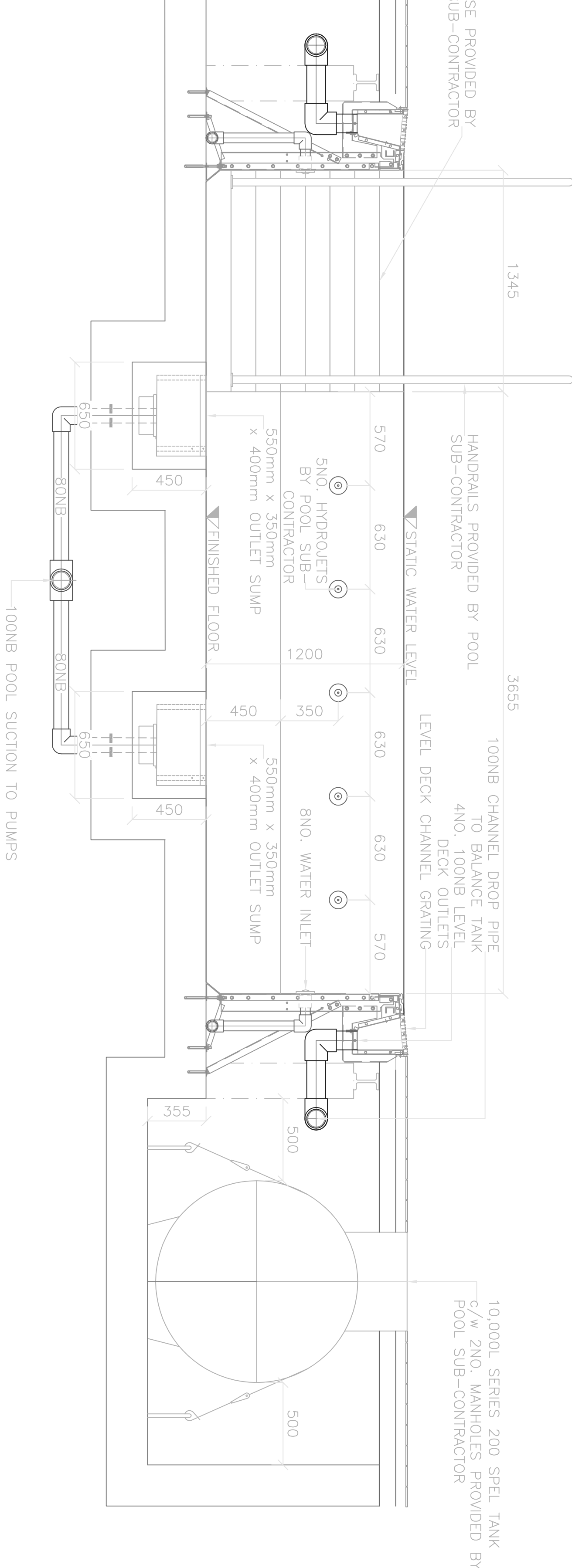
- SLP2012-01.01 - HEATING CONTROL SCHEMATIC
- SLP2012-01.02 - FILTRATION SCHEMATIC
- SLP2012-20.01 - TYPICAL MYRTHA POOL DETAILS
- MYRTHA POOL DETAILS BALANCE TANK INSTALLATION
- SLP2012-21.01 - MECHANICAL SERVICE NOTES

- \* INDICATES ITEMS BY MAIN/PRINCIPAL CONTRACTOR

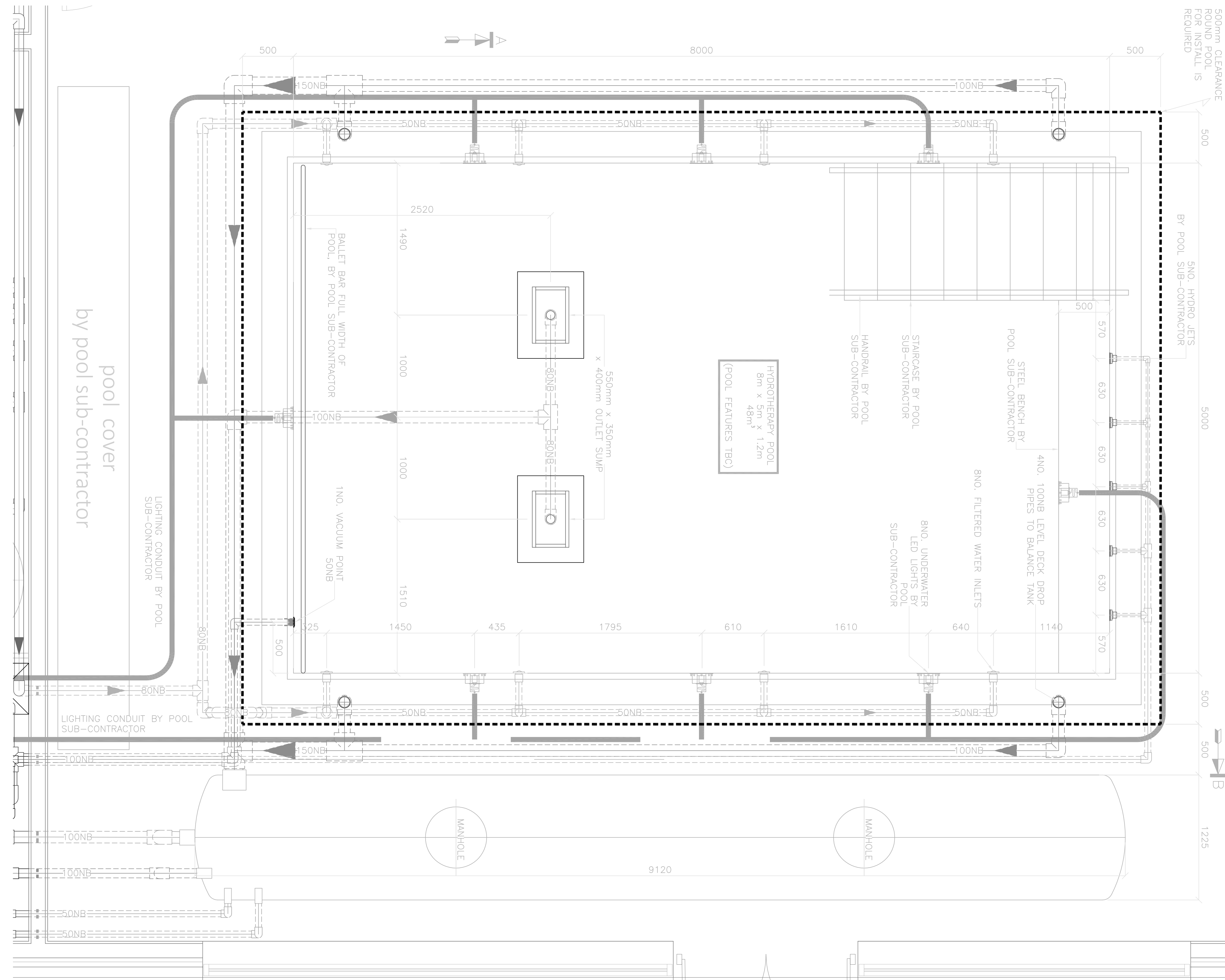
FILTRATION PLANTROOM PLAN  
SCALE 1:20



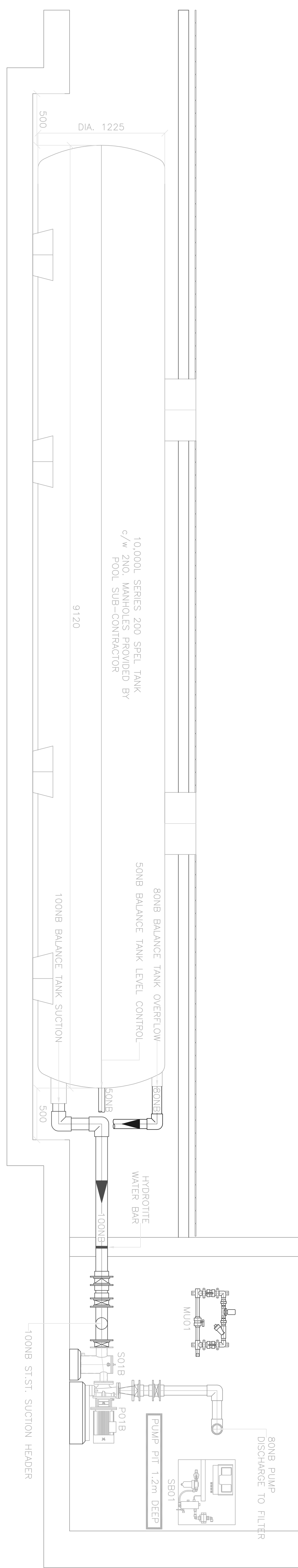
SECTION A-A  
SCALE 1:20



POOL PLAN  
SCALE 1:20



SECTION B-B  
SCALE 1:20



B	REVISIONS	22/2/18
Department For Department For Department For Architectural Services		
BURY		
Architectural Services		

ELITE BANK SPECIALIST ARTIST COLLEGE PHASE 2 HYDROTHERAPY POOL

SLP2012  
TENDER ISSUE

HYDROTHERAPY POOL  
OVERALL PLAN AND SECTIONS

AS SHOWN @ 22/2/18	Drawn	Approved
SLP2012-20.01	SLP2012-20.01	B