

# Managers Forum - Transformation Board

**18<sup>th</sup> April 2016**



# **Welcome & Agenda**

## **Steve Parrock**

**Forward thinking, people orientated and adaptable  
– always with integrity**



# Agenda:

- Follow up from last Managers Forum – Steve Parrock
- Transformation Programme Introduction – Caroline Taylor
- Transformation Programme Finances, Efficiency Planning & Business Cases – Lisa Finn
- Transformation Programme – Objective, Structure, & Project Categorisation – Lisa Chittenden
- Coffee and networking
- Group Work/Discussion – All
- Round-up + close

# Transformation Programme – Introduction Caroline Taylor



[www.shutterstock.com](http://www.shutterstock.com) · 234071773

Forward thinking, people orientated and adaptable  
– always with integrity



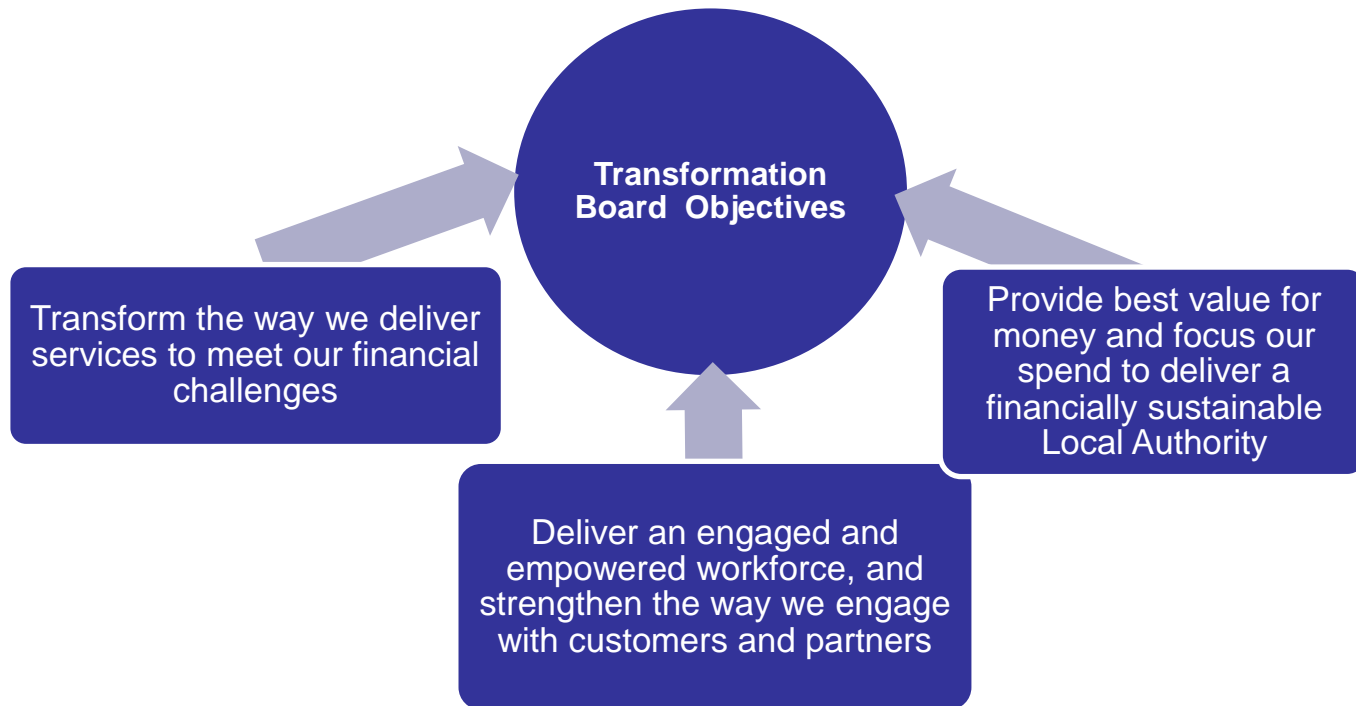
# Introduction:

- Background – Peer Review recommendation:

*“It is crucial you now have a sustained focus on the council’s finances and we believe you would benefit from a single transformation programme to deliver the savings and change initiatives.”*

- Links to Efficiency Plan
- What others are doing – e.g. Plymouth, Staffordshire

# Transformation Board – Objective



**Forward thinking, people orientated and adaptable  
– always with integrity**

# Financial Forecast & Transformation Funding Lisa Finn



Forward thinking, people orientated and adaptable  
– always with integrity

# Current Financial Forecast:

- 4 year funding settlement announced
- RSG to reduce from £27m to £6m in 2019/20
- £10m Savings found in 2016/17 – A good start!
- Estimated funding gap 2017/18 to 2019/20 between £15m - £20m
- DCLG have stated that for Councils to accept a 4 year RSG settlement we need to produce an 'Efficiency Plan' and accept the 4 year offer by October 2016
- The Efficiency plan will become the basis of the Councils budget over the next 3 years and will be monitored through the Transformation Board



# Current Financial Forecast:

- **Caveat:** Uncertainties include:
  - ❖ Review of funding formula
  - ❖ Review of new homes bonus grant
  - ❖ Impact of 100% business rate retention
  - ❖ NNDR Re-Evaluation 2017
  - ❖ Impact of Better Care Fund

# Transformation Funding in 2016/17:

- £100k for Transformation in base revenue budget
- £500k for Transformation one-off
- £500k for 'Invest for income' reserve (one-off)
- £10m Capital Investment Fund (Prudential Borrowing)
- £1m IT Investment Fund
- £50k for training and development (one-off)

# **Business Cases – Caroline Taylor**

**Forward thinking, people orientated and adaptable  
– always with integrity**



# Business Cases:

- Business case will be scored by the relevant Board using an agreed matrix
- Scoring is weighted – highest weighting applied to the Financial Benefits of the project.
- Sections within the business case that will be scored are as follows:
  1. Meeting Corporate Plan Principles
  2. Critical Success Factors
  3. Financial Benefits
  4. Non – Financial Benefits
  5. Overall Confidence Level
- Funding from the Transformation Programme budget will be allocated - business case submitted to the Transformation Board (via Lisa Chittenden)

# **Transformation Programme – Structure and Project Categorisation**

## **Lisa Chittenden**

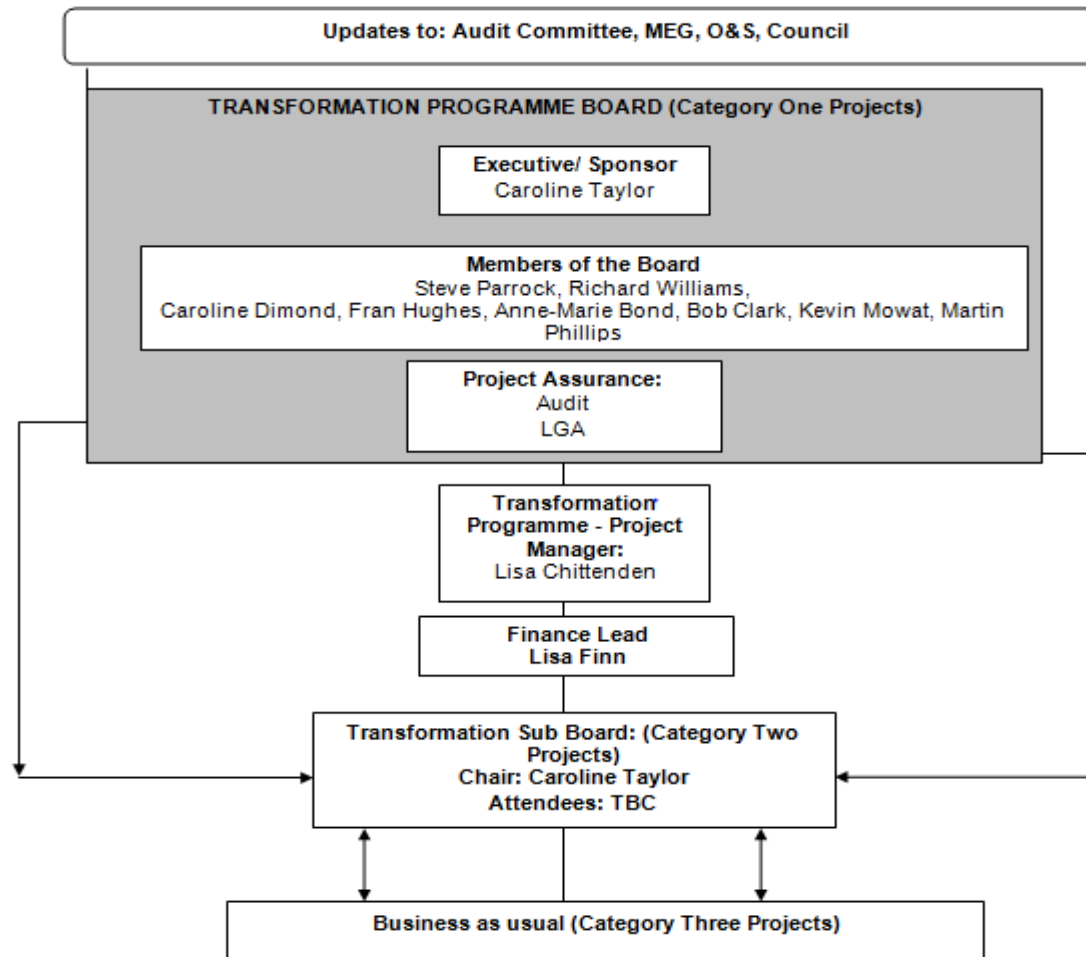
**Forward thinking, people orientated and adaptable  
– always with integrity**



# Organisational Structure

**Forward thinking, people orientated and adaptable  
– always with integrity**





Forward thinking, people orientated and adaptable  
– always with integrity

# Review and Reporting

**Forward thinking, people orientated and adaptable  
– always with integrity**





# Review and Reporting

- Projects will be organised into 3 categories:

Category One	Category Two	Category Three
<p>These projects will be the Key initiatives that will be the focus of the Transformation Programme. The projects will be centred on delivering the most strategic priorities of the Council for example:</p> <ul style="list-style-type: none"><li>• Children's Services 5 year plan</li><li>• Integrated Care Organisation – Phase Two</li></ul>	<p>These projects will be those that are greater than 'business as usual', are important to the delivery of the Transformation Programme, but are not deemed to be a key strategic priority – for example:</p> <ul style="list-style-type: none"><li>• Parking Review</li><li>• Review of Public Toilets</li></ul>	<p>These projects are those that should be managed as "business as usual" to deliver operational improvements and cost savings.</p>

# Review and Reporting

- Category One Projects will be reported to the Transformation Board
- Category Two Projects will be reported to the Transformation Sub Board
- Category Three Projects are classed as BAU and therefore will not be reported through a 'Transformation Board'.

# Break and Networking



**Forward thinking, people orientated and adaptable  
– always with integrity**

# Practical – Categorisation of projects

## Caroline Taylor



Forward thinking, people orientated and adaptable  
– always with integrity

# Practical

The projects you will now see have been gathered from a number of sources:

- Managers Forum
- Corporate Plan
- SLT Members
- The LGA (from the Peer Review)
- Business as Usual

# Group Work



- Can you please categorise the projects (one, two, three)
- Are there any more to add to the list?
- Do any need to be removed?

Forward thinking, people orientated and adaptable  
– always with integrity



**Forward thinking, people orientated and adaptable  
– always with integrity**

# **Round-Up Caroline Taylor**

**Forward thinking, people orientated and adaptable  
– always with integrity**







**Forward thinking, people orientated and adaptable  
– always with integrity**