



Funded by
UK Government

Alum Chine Robert Louis Stevenson Sculpture: Artist Brief

Levelling Up Coastal Artworks

bcpcouncil.gov.uk



POWERED BY
**LEVELLING
— UP —**

**ALUM CHINE PUBLIC
ARTWORK
COMMISSION FOR
BCP COUNCIL'S
PUBLIC ART
INTERVENTIONS
PROGRAMME**

We are looking to engage visitors with Bournemouth's literary heritage through a new impactful sculpture inspired by the work of resident Robert Louis Stevenson, novelist and writer of the 19th Century, famed for his works which include 'Treasure Island' and 'Strange Case of Dr Jekyll and Mr Hyde'.



Project Overview

In 2022, BCP Council successfully bid for Levelling-Up grant funding for improvements to the seafront. The LUF Public Art Interventions Programme is one of 11 infrastructure projects which the Council received £19.9 million in January 2023 to deliver across its seafront (Poole—Bournemouth—Christchurch).

The LUF Public Art Interventions Programme

This programme aims to deliver public art interventions in 10 locations along the BCP Coastline linked with communities in areas of deprivation. The development and creation of these public art interventions will strengthen the identity of these locations, improve the seafront destinations of a range of BCP communities and attract visitors and residents to different areas of seafront.

Each intervention has been themed on 'identity' to best reflect and celebrate the communities and local heritage of the place in which it is to be sited. The interventions vary in medium, style and subject to ensure that it best suits its context and to offer a variety of new public artworks along the coastline.

Alum Chine Artwork Commission

BCP Council is looking to appoint an established artist to produce a sculpture for Alum Chine, celebrating its literary links with Robert Louis Stevenson and his work 'Strange Case of Dr Jekyll and Mr Hyde' which he wrote whilst living in Westbourne.

The sculpture should be of high artistic quality, imaginatively represent the theme, enhance the Alum Chine seafront, and inspire viewers to seek to discover more about the heritage of the local area.

It should enhance the area's cultural offer, providing free access to public art and appealing to a variety of people of different ages and backgrounds.

Target Audience

While BCP Council is keen that a wide variety of people connect with and enjoy this piece, we have prioritised the following groups:

- a) Multi-generational families. This piece should appeal to a range of ages, from children to people aged 65+.
- b) Visitors and tourists with interest in nature and culture. This piece should attract non-BCP residents to explore Westbourne by showcasing the fascinating local heritage and improving the local area's cultural offer.

Key Design Criteria:

- It should be of high artistic quality.
- It should be robust and durable, able to withstand the coastal environment, with a lifespan of a minimum of 20 years. As such, the sculpture should be made from suitable materials.
- It should enhance the seafront and be suitable for its location at Alum Chine, serving as a fitting cultural addition to the site, enhancing the natural environment in which it is placed.
- The artwork should enhance the area's cultural offer, providing free access to public art and appealing to a variety of people of different ages and backgrounds.
- It should imaginatively represent the theme, be engaging and intriguing.
- It should encourage visitors to stop and discover more about the Westbourne literary links and the heritage of the local area.

STRANGE CASE

OF

DR JEKYLL AND MR HYDE

BY

ROBERT LOUIS STEVENSON



LONDON

LONGMANS, GREEN, AND CO.

1886

All rights reserved



The Inspiration

Robert Louis Stevenson (1850–1894) was a celebrated Scottish novelist, essayist, poet, and travel writer, renowned for classics like *Treasure Island*, *Strange Case of Dr Jekyll and Mr Hyde*, and *A Child's Garden of Verses*.

In 1884, seeking the health benefits of the sea air, Stevenson and his wife Fanny settled in Westbourne. They lived in a house they named 'Skerryvore', named after a lighthouse in Scotland built by his uncle.

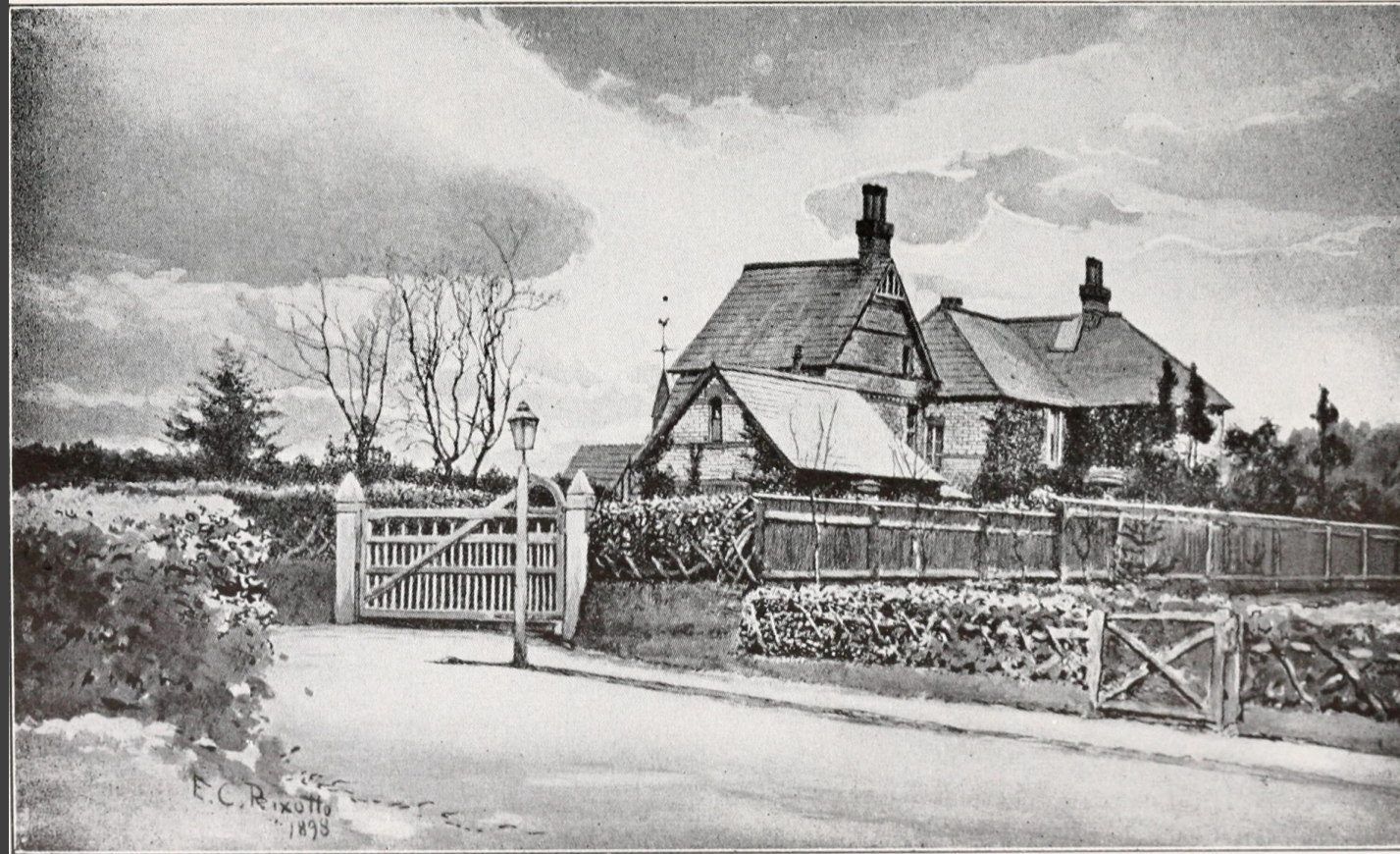
From April 1885, Stevenson enjoyed the companionship of fellow novelist Henry James, who had moved to Bournemouth to care for his ailing sister, Alice. Despite being largely bedridden and describing his existence as living "like a weevil in a biscuit," Stevenson was remarkably productive during his three years in Westbourne, penning much of his most acclaimed work, including *Dr Jekyll and Mr Hyde*, which cemented his literary legacy.

'Skerryvore' was destroyed in November 1940, the only building to be hit by a German air raid. However, the site can be visited today as a memorial gardens, which includes the layout of the Stevensons' home and a sculpture of the Skerryvore Lighthouse.

In the 1950s a memorial garden was created with a stone model of Skerryvore Lighthouse. The plaque reads:

“This garden was designed and constructed by the Bournemouth Corporation in 1957 as a memorial to Robert Louis Stevenson who occupied the house on this site from April 1885 until August 1887. The house, which was destroyed by enemy bombing on 16th November 1940, was named after the Skerryvore Lighthouse built by the Stevenson family firm on the Argyle coast and from which this model is copied.

Stevenson wrote many books whilst residing at “Skerryvore”, including “Kidnapped” and “The Strange Case of Dr Jekyll and Mr Hyde”.



Here you can view a portrait of Robert Louis Stevenson and his wife painted in their home in Westbourne: [John Singer Sargent | Robert Louis Stevenson and His Wife | American | The Metropolitan Museum of Art \(metmuseum.org\)](#)

Stevenson's house Skerryvore in the southern English coastal town of Bournemouth where he wrote the bulk of his most popular work.

Strange Case of Dr Jekyll and Mr Hyde is an 1886 Gothic novella by Scottish author Robert Louis Stevenson. It centers on Gabriel John Utterson, a London lawyer, who delves into the mysterious relationship between his old friend, Dr. Henry Jekyll, and the sinister criminal, Edward Hyde.

This novella is one of the most renowned works in English literature and a cornerstone of the Gothic horror genre. Its influence extends deeply into popular culture, with the term "Jekyll and Hyde" becoming a common expression to describe individuals who display a dual nature—one outwardly good and the other shockingly malevolent.

The novella was penned in Westbourne, where Stevenson relocated in 1884 to benefit from its healthier sea air and warmer climate. The story is often seen as mirroring Stevenson's own health challenges during that period. While in Bournemouth, Stevenson became friends with the former Reverend Walter Jekyll, the brother of renowned horticulturalist Gertrude Jekyll, and he borrowed the name Jekyll for his novella. Another character, Mr. Poole, was named after the neighbouring town.

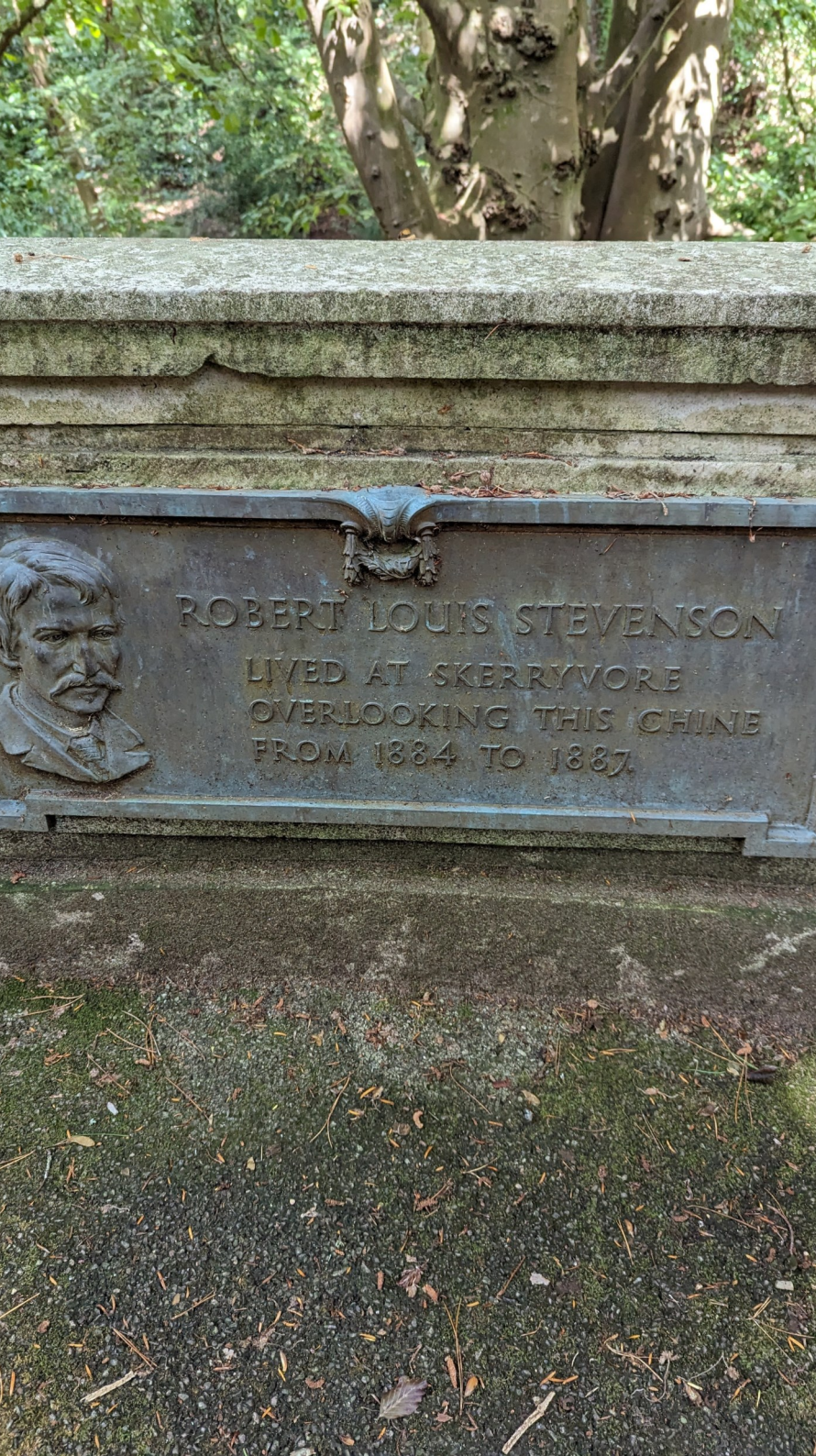


Artwork Brief

We are looking for an artist to create a sculpture for the seafront area of Alum Chine, Westbourne, Bournemouth. The sculpture should be inspired by the literary work of Robert Louis Stevenson, specifically 'Strange Case of Dr Jekyll and Mr Hyde'. This could be through a visual representation of an aspect of the novella, such as character(s), theme, scene or story. The artist is welcome to creatively use any form, medium, style that would suit this piece and its site.

Inclusion in BCP's Trail Offer

BCP Council is developing its trails offer and creating new trails to help residents and visitors discover more of the local area and its hidden histories and cultural heritage. We would like this artwork to pique curiosity and to help residents and visitors find out about the heritage of Bournemouth. This artwork, along with the other artistic interventions that are being created as part of this programme, will also be included in a public art trail, with content being created to support visitors in discovering more about the pieces.



Location Overview:

Alum Chine connects the beach to Westbourne. A chine is a steep-sided dry river valley. Alum Chine is the largest of the four chines in Bournemouth.

Alum Chine got its name from the alum mining which took place locally in the 16th century. Alum is a fixative that was used in dyeing, tanning and painting. The mines eventually became uneconomical and closed in the mid-17th century.

The area was bought by William Dean in 1805. At the time, local fishermen were using the bay-side area to store their boats and equipment.

Alum Chine's tropical gardens were laid out in the 1920s, but by the 1990s they had become overrun. In 1996 the gardens were replanted, and a paved viewing area added as part of the Gardens of Excellence scheme.

Alum Chine beach is a popular destination, especially for locals, as it offers key facilities and eateries, as well as a popular play park and the tropical gardens.



Artwork site:

The identified site for artwork is a grassy area that sits by the main pathway leading up to the beach from Alum Chine, the car park and the nearest road. The site sits opposite the play park, nearby to the toilets and the Tropical Gardens. As such this is a very high footfall pathway.

The artwork should be situated just off the pathway in the grassy bank area. The artwork should be placed near the pathway so that it is accessible to view and interactive with. Some landscaping will be required to level the area and create a foundation for the artwork.

Site area: maximum 4m² (4m x 4m)

Google map link: <https://maps.app.goo.gl/4jEJdPoE1wwRKRQ16>



Argyll Bowling Club

W Overcliff Dr

W Overcliff Dr

W Overcliff Dr

W Overcliff Dr

Alum Chine

Tropical Gardens

Kwik Fit Aerials

Studland Rd

Baby Rd

Alum Chine Beach Parking

Alumhurst Rd

Alum Chine

Alum Chine Play Park

Alum Chine Public Toilets

Studland Dene Dorset Mortgage Group

Studland Rd

Alsafa Heights

Studland Rd

Spyglass Point

Promenade

Alum Chine Beach

Ocean oasis with a family-friendly vibe

W Undercliff Promenade

W Undercliff Promenade

Alumhurst Rd

Promenade



Site for artwork: grassy area pictured.

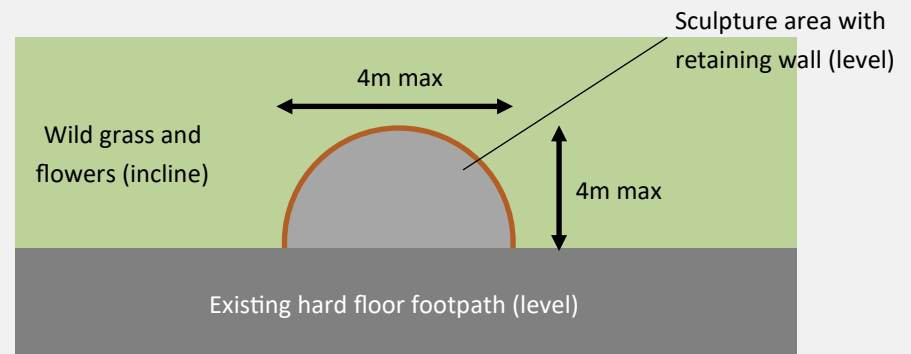


Specifications:

Size: The artwork should be a suitable size for the proposed site area of 4m x 4m (maximum) and safe for members of the public to engage with.

Landscaping, Base & Fixtures: The area around the sculpture will be levelled and adjacent to the existing pathway. A crushed stone surface will be created around the sides and back of the area (exceeding no more than 4m² (4m x 4m)) with a retaining wall. Ideally this wall will be curved creating a horseshoe shape. This landscaping will be organised and paid for by BCP Council.

Installation can be undertaken by BCP Council's Groundworks Team. The selected artists will be required to ensure that the sculpture has a suitable and safe base and install process. Installation should be covered in the Supplier's budget.



- **Material**

The artwork can be made of any material, as long as this is robust and durable, suitable for the location and environment, and safe. We do not advise that the sculpture is wooden as this erodes rapidly in the coastal environment.

- **Light, movement, sound**

The pieces should not omit any sound or light that would be disruptive to the wildlife of the area or disrupt the tranquil atmosphere of the site. Artworks will have no access to power. Artworks with movement will be considered but durability, safety and site context will be prioritised.

- **Accessibility**

Artworks should be inclusive to people of different genders, socio-economic backgrounds, ethnicities and abilities, both in their subject matter and in how people are able to access the pieces. The piece will be physically accessible to members of the public. Artists may wish to consider how people will engage with the piece and any further opportunity to include sensory or tactile elements in the design.

- **Sustainability**

BCP Council is committed to reducing their carbon footprint, which includes scope 3 emissions (impacts by suppliers). Artists are required to consider & reduce their (and any further suppliers') environmental impact in the procurement, manufacture, transportation and end of life of their artwork.

- **Health & Safety**

The artwork must comply with Health and Safety regulations for public spaces. Artists will be expected to provide a Risk Assessment and Method Statement for the production and installation of their artwork. This will be reviewed by BCP Council and agreed by the LUF Public Art Interventions Programme lead Officer.

- **Longevity, Maintenance & Durability**

The artwork is expected to have a lifespan of 20+ years and require no more than minimal maintenance. Durability and resilience to the coastal environment should be accounted for in the design and choice of materials for the artwork.

Project Key Dates

Artist Open Tender Deadline: 29/08/24

Artist Appointed & Initial Meeting: w/c 16/09/24

Final Designs Agreed: w/c 21/10/24

Planning Application Outcome: 16/01/25

Artwork Creation/Manufacture: January—March 2025

Creation/Manufacture of Artwork Complete: 16/03/25

*We are open to some flexibility on dates and the artwork schedule will be confirmed with the successful supplier.

Selection Process

The selection of the work of art will be undertaken by an evaluation panel formed by representatives from BCP Council.

For the avoidance of doubt, the methodology of the evaluation of bids is contained within Section 5 The Evaluation Process, within the Invitation to Tender.

Fee:

We are welcoming applications from all artists who can deliver a quality piece of public art. The artist's fee must include all materials and costs incurred in the production of the artwork and its installation.

This is to include, for example:

- Artist's commission and design fee.
- Costs incurred for presentation of detailed design at interim stage.
- Research costs.
- Materials.
- Manufacture and equipment required.
- All expenses including travel, accommodation and presentation materials.
- Professional fees and legal costs.
- Installation costs and any extra required landscaping (including fees for structural engineers where required).

It will be the responsibility of the appointed artists, working with the commissioner and client, to ensure that the project is delivered within their proposed budget. This may require the reworking of the designs and the processes of manufacturing / creation.

We can only accommodate submissions with a budget of up to £34,000.

Public Liability Insurance

We are anticipating that successful artists will require Public Liability insurance cover of £10M.

Maintenance & Durability

The expected lifespan of the artwork shall be minimum 20 years with minimal maintenance required.

Copyright & Ownership

The Supplier will own the copyright to their own designs and artwork. Upon completion of the relevant project milestones the ownership of the artwork will pass to BCP Council. It will be expected that rights to photography and use of the artwork in future promotional and community activity will be granted to BCP Council.

Supporting Signage

Space and site allowance should be given to supporting site signage, which will be managed, paid for and created by BCP Council. BCP Council will liaise with the artist on signage placement and content it works harmoniously with the artwork.