

CHESHIRE EAST COUNCIL

EARLE ST  
MUNICIPAL BUILDINGS  
CREWE  
CW1 2BJ

SP Energy Networks  
ScottishPower  
General Administration  
10th floor  
320 St. Vincent Street  
Glasgow  
G2 5AD

Customer reference number : 616475525  
Payment reference number:0882830321006299  
Offer Date : 28.09.2021

Dear Sir/Madam,

**Re: Leighton Grange Farm Middlewich Road Crewe Cheshire East CW1 4QQ**

Thank you for your enquiry, which we received on 29.06.2021 regarding Embedded Generation - no plots works at the above address. We have pleasure in submitting this Offer Letter for your consideration.

**You now have two options. To proceed, you can only choose one. You may:**

**1. Accept SP Energy Networks to complete all the work to meet your connection requirements:**

This means that SP Energy Networks will complete the contestable and non-contestable work. This will be known in this offer letter as **The Full Works**.

Charge (exclusive of VAT)	VAT	Total Charge
£457,266.31	£91,453.27	£548,719.58

**OR**

**2. Accept SP Energy Networks to complete the Point of Connection (POC) work to meet your connection requirements:**

This means that SP Energy Networks will complete the non-contestable work only. It is your responsibility to appoint an accredited independent connection provider (ICP) to work alongside SP Energy Networks to complete the contestable work. This will be known in this offer letter as **The POC**.

Charge (exclusive of VAT)	VAT	Total Charge
£201,418.02	£40,283.61	£241,701.63

For further information please refer to the guidance leaflet **Your Connection Offer Explained**. If you are happy to proceed please refer to the **Next Steps** section of this Offer Letter.

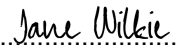
## YOUR NEXT STEPS


1. Familiarise yourself with the details of both **The Full Works** and **The POC**, set out later within this offer letter.
2. Familiarise yourself with General Terms and Conditions for Connection to the Electricity Distribution System, dated 1st May 2012 (the "Conditions"). A copy of our Conditions can be found at: [www.spenergynetworks.co.uk/terms](http://www.spenergynetworks.co.uk/terms).
3. If you are considering accepting The POC and the use of an ICP to work alongside SP Energy Networks, please visit:  
[http://www.spenergynetworks.co.uk/pages/competition\\_in\\_connections.asp](http://www.spenergynetworks.co.uk/pages/competition_in_connections.asp)  
Further information is also available at <http://www.lloydsregister.co.uk/schemes/NERS/>.
4. If you wish to proceed, choose one of the two options, **The Full Works** or **The POC** and complete the enclosed **Letter of Acceptance**.

**Please note, we must receive your signed Letter of Acceptance together with payment so we're able to process your payment and progress your project as quickly as possible.**

If we can be of any further assistance, or you require a copy of the Conditions please do not hesitate to contact me on 07753 622613 or by email at [GettingConnected@scottishpower.com](mailto:GettingConnected@scottishpower.com), quoting reference 616475525.

Yours faithfully,

  
.....  
ROBERT WILKINSON  
For and on behalf of SP Manweb plc

  
.....  
Second Signatory  
Ken Brassington

This offer is made in accordance with Section 16A (5) of the Electricity Act 1989. The provisions in the Schedule and the Conditions are incorporated into and form part of this offer. SP Manweb plc as appointed SP Power Systems Limited ("SPPS") to act as its contracting agent regarding your request for electricity connection(s) to the Distributor's System. Any references to "Us", "We" or "Our" in this offer are references to the Distributor. Any references to "You" or "Your" in this offer are references to the Customer.



\*02400802320000\*

**YOUR LETTER OF ACCEPTANCE - PLEASE COMPLETE & RETURN TO US**

SP Energy Networks  
 ScottishPower  
 General Administration  
 10th floor  
 320 St. Vincent Street  
 Glasgow  
 G2 5AD

CHESHIRE EAST COUNCIL  
  
 EARLE ST  
 MUNICIPAL BUILDINGS  
 CREWE  
 CW1 2BJ

Customer reference number: 616475525  
 Payment reference number:0882830321006299  
 28.09.2021

Dear Sirs,

**Offer of Embedded Generation - no plots to Leighton Grange Farm Middlewich Road Crewe Cheshire  
 East CW1 4QQ Ref: 616475525.**

Please place a cross [X] next to the offer You are accepting in the space provided:

<b>OPTION 1. I/We confirm acceptance of the Full Works offer for the Non-contestable Works and Contestable Works and associated terms and conditions.</b>		
<b>Connection Charge</b>	The cost will be £457,266.31 (exc. VAT) VAT will be charged at £91,453.27 The total cost will be £548,719.58 (inc. VAT)	
<b>OPTION 2. I/We confirm acceptance of the Point of Connection Offer (POC) for the Non-contestable Works and Contestable Works and associated terms and conditions.</b>		
<b>Connection Charge</b>	The cost will be £201,418.02 (exc. VAT) VAT will be charged at £40,283.61 The total cost will be £241,701.63 (inc. VAT)	

**NOTE :** If applicable, Connection Offer Expenses must have been paid. You will not have a fully qualified acceptance in place following receipt of a completed acceptance form and payment on acceptance unless you have also paid Connection Offer Expenses Invoices

**A legally binding contract will only be concluded upon receipt of this letter of acceptance and payment as set out in the table above. We advise that you read all sections of this offer carefully before signing. For methods of payment, please see overleaf.**

**Acceptance and Declaration**

- I/We confirm that the installation will conform to the Electricity Safety, Quality and Continuity Regulations 2002.
- I/We will ensure that the installation is complete and safe before the connection is made.
- I/We will inform SP Manweb plc. of a change of responsibility for the electricity supply and/or connection.
- I/We accept that SP Manweb plc shall have the right to amend and/or vary Our Works, the Customer's Works and/or the Connection Charge in accordance with the agreement
- I/We confirm that I/We are appointed by and acting with the authority of the Customer (where applicable) and that I am an authorised signatory for the Customer with full authority to enter into the Agreement on behalf of the Customer. If I do not have such authority, I shall be personally liable under the Agreement.

Signature.....

Date.....

Print Full Name: **Jonathan Bensted**.....

Site Contact Name: .....

Designation: .....

Site Telephone Number: .....

Please tick to confirm method of payment :

- Cheque
- Online / BACS Transfer
- Credit / Debit Card
- Doesn't apply

In Process

Please see below the different ways that you can make your payment.

Please be advised that we must receive your signed LETTER OF ACCEPTANCE together with any payment . This is to ensure that we are able to progress your payment and progress your project as quickly as possible.

**Your signed Letter of Acceptance can be sent:**

**By email:-** For Debit/Credit Card or BACS payments :  
accountreceivable@scottishpower.com

**By mail:** SP Manweb PLC,SCOTTISHPOWER 10TH FLOOR, 320 ST. VINCENT STREET  
GLASGOW, G2 5AD

**Methods of Payment:**

Please make payment by the following methods using the payment reference number  
**0882830321006299**

**By Debit/Credit Card:-**

Please call 0141 614 6902 quoting our reference number.

Please note payment can only be taken when we are in receipt of the signed LETTER OF ACCEPTANCE. Please email of post the LETTER OF ACCEPTANCE prior to calling.

**By Cheque :**

**Please send your cheque together with your signed LETTER OF ACCEPTANCE to:-**

SP Manweb PLC,SCOTTISHPOWER 10TH FLOOR, 320 ST. VINCENT STREET GLASGOW, G2  
5AD

Please make your cheque payable to :SP Manweb PLC

**By BACS or Bank Transfer:-**

Bank - Royal Bank of Scotland plc  
Address - 10 Gordon Street, Glasgow, G1 3PL  
Account Name - SP Manweb PLC  
Account No : 10016293  
Sort Code : 830706  
IBAN : GB55RBOS83070610016293  
SWIFT : RBOSGB2LXXX

## YOUR FULL WORKS OFFER

SP Energy Networks will complete the contestable and non-contestable work.

### Summary of the proposed works

We shall install and connect a High Voltage (11kV) supply with an import capacity of 650kVA and export capacity of 400kVA operating between 0.99 lead and 0.95 lead will apply with the load balanced over three phases. Our Works will include a maximum of 1600m of cable, 470m of excavation backfill and reinstatement and 2 No. joint hole(s). All on site excavation to be carried out by the customer (1200m). Our Works are based on the design on the enclosed drawing.

The design fault level is 250 MVA at 11 kV. The point of connection will be the high voltage metered circuit breaker within the substation and it is your responsibility to install suitable cables from that board to your own switchgear and materials required for termination in a dry cable box. Your switchgear must be located in the switch room immediately adjacent to the substation building provided for the Distributors equipment.

The following restrictions and constraints on the availability of the export capacity shall apply:-

- a) The connection provided is "Unfirm".
- b) The Distributor may plan and execute other outages of its distribution system as mentioned in the Connection Agreement.

The above special conditions do not cater for the emergency situations, which may occur from time to time.

The Distributor also reserves the right to instruct generators to reduce or curtail power export and reactive power import during time of operational difficulties (or as so directed by our control engineer). The provision of this clause will be repeated in the Connection Agreement.

SPEN to fit new 11kV breaker panel and connect the customers installation and the costs with installing and commissioning the protection panel for the NVD protection.

Scottish Power Energy Networks to provide 1x telecoms termination at Leighton Hospital Primary, 15m excavation, lay and reinstatement of telecoms straight joint at substation compound boundary for the installation of SCADA for operational monitoring. Scottish Power Energy Networks to carry out 1x termination at customer substation.

SPEN to undertake witness test on the Customer's G99 protection for Customer high voltage metered circuit breakers. Time allowed one normal working day.

The following tables provide further detail of the charges associated with the Full Works offer.

### A summary of the Full Works costs

This table splits out the cost by the type of work being proposed. The connection charge is the cost associated with the work required to provide you with your connection assets. The diversion charge is the cost associated with the work required to divert any existing assets to enable your connection. The reinforcement charge is the cost associated with the work required to reinforce the electrical system to enable your connection.

Charge description	Connection	Diversion	Reinforcement
F3 OTHER LV SERVICES	£410.85	£0.00	£0.00
F7 SUBSTATIONS	£281,429.61	£0.00	£0.00
F6 OHL	£5,661.06	£0.00	£0.00
F5 MAINS CABLES	£157,294.97	£0.00	£0.00
E CIC DESIGN APPROVAL OF CONT WRKS	£2,500.00	£0.00	£0.00
G CIC FINAL WORKS PHASED ENERGISATION	£4,371.93	£0.00	£0.00
H CIC INSPECT AND MONITOR OF CONT WRKS	£400.00	£0.00	£0.00
I LAND RIGHTS	£5,197.92	£0.00	£0.00
<b>Total</b>	<b>457,266.34</b>	<b>0.00</b>	<b>0.00</b>

### A detailed breakdown of the Full Works costs

This table provides a detailed breakdown of the costs associated with the work being proposed. This table

reflects the charges that are set out within our Common Connection Charging Methodology. This table also splits out the contestable and non-contestable elements of the work and any contribution made by SP Manweb plc.

Description Of Works	Proposed Quantity	Measure	Customer Contribution	SPM Contribution	Contestable	Non Contestable
<b>E CIC DESIGN APPROVAL OF CONT WRKS</b>						
CHARGE FOR DESIGN APPROVAL	1.00	EA	2,500.00	0.00		Y
<b>Sub Total</b>			<b>£2,500.00</b>	<b>£0.00</b>		
<b>F3 OTHER LV SERVICES</b>						
PULL CABLE THROUGH DUCT	1.00	M	4.66	0.00	Y	
LOW VOLTAGE CUT-OUT	1.00	EA	121.30	0.00	Y	
EXCAVATE/LAY 1 LOW VOLTAGE SERVICE CABLE (AGRICULT	3.00	M	84.90	0.00		Y
LAY ONLY LOW VOLTAGE SERVICE CABLE (EXCLUDING SAND	27.00	M	199.99	0.00	Y	
<b>Sub Total</b>			<b>£410.85</b>	<b>£0.00</b>		
<b>F5 MAINS CABLES</b>						
EXCAVATE/LAY 1 11KV 3-CORE CABLE (FOOTWAYS)	145.00	M	13,220.21	0.00	Y	
EXCAVATE/LAY 1 11KV 3-CORE CABLE (FOOTWAYS)	25.00	M	2,414.02	0.00		Y
EXCAVATE/LAY 1 11KV 3-CORE CABLE (ROAD)	15.00	M	2,422.52	0.00	Y	
EXCAVATE/LAY 1 11KV 3-CORE CABLE (VERGE)	310.00	M	20,282.83	0.00	Y	
LAY ONLY HIGH VOLTAGE CABLE (INCLUDING SAND)	1,130.00	M	34,597.89	0.00	Y	
LAY ONLY HIGH VOLTAGE CABLE (INCLUDING SAND)	35.00	M	1,019.66	0.00		Y
EXCAVATE 11KV JOINT HOLE (FOOTWAYS)	1.00	EA	801.48	0.00	Y	
EXCAVATE 11KV JOINT HOLE (VERGE)	1.00	EA	447.66	0.00	Y	
HIGH VOLTAGE JOINTING	7.00	EA	3,251.60	0.00	Y	
HIGH VOLTAGE JOINTING	1.00	EA	454.19	0.00		Y
TRAFFIC MANAGEMENT	1.00	ST	13,312.00	0.00	Y	
PICK UP, DELIVER & RETURN MATERIALS	1.00	ST	2,190.36	0.00	Y	
PICK UP, DELIVER & RETURN MATERIALS	1.00	ST	486.03	0.00		Y
SUPPLY DUCTING	45.00	M	317.49	0.00	Y	
INSTALL DUCTING	45.00	M	201.28	0.00	Y	
PULL CABLE THROUGH DUCT	30.00	M	146.96	0.00	Y	
PROVISION OF TELECOMS	1.00	ST	13,313.33	0.00	Y	
PROJECT MANAGEMENT (TOTAL LABOUR)	1.00	ST	2,112.61	0.00		Y
SCADA ENGINEER (TOTAL LABOUR)	1.00	ST	917.45	0.00		Y
INSTALLATION OF PILOT/FIBRE CABLE (ROAD)	15.00	M	1,900.79	0.00		Y
INSTALLATION OF PILOT/FIBRE CABLE (INC SAND)	15.00	M	60.29	0.00		Y
INSTALLATION OF PILOT/FIBRE CABLE	1.00	EA	30,893.42	0.00	Y	
PROTECTION/TELECOMS JOINTING WORKS	6.00	EA	2,392.80	0.00	Y	
PROTECTION/TELECOMS JOINTING WORKS	1.00	EA	58.37	0.00		Y
SUPPLY & INSTALL FIBRE DRAWPIT	3.00	EA	7,338.24	0.00	Y	
SUPPLY & INSTALL FIBRE JOINTS	2.00	EA	2,741.49	0.00		Y
<b>Sub Total</b>			<b>£157,294.97</b>	<b>£0.00</b>		
<b>F6 OHL</b>						
POLE MOUNTED TRANSFORMER	1.00	EA	2,697.15	0.00		Y
POLE MOUNTED TRANSFORMER CONNECTION KIT	1.00	EA	719.45	0.00		Y
PROJECT MANAGEMENT (TOTAL LABOUR)	1.00	ST	2,112.61	0.00		Y
CONNECT LOW VOLTAGE CABLE ONTO FUSE UNIT	1.00	EA	131.85	0.00		Y
<b>Sub Total</b>			<b>£5,661.06</b>	<b>£0.00</b>		
<b>F7 SUBSTATIONS</b>						
LAY ONLY HIGH VOLTAGE CABLE (INCLUDING SAND)	30.00	M	908.94	0.00	Y	
CONNECT HIGH VOLTAGE CABLE ONTO SWITCHGEAR	2.00	EA	520.12	0.00	Y	
CONNECT HIGH VOLTAGE CABLE ONTO SWITCHGEAR	1.00	EA	705.60	0.00		Y
HIGH VOLTAGE FEEDER PANEL	2.00	EA	46,505.47	0.00	Y	
HIGH VOLTAGE FEEDER PANEL	1.00	EA	24,157.44	0.00		Y
HIGH VOLTAGE SWITCHGEAR JOINTING ITEMS	2.00	EA	152.93	0.00	Y	
HIGH VOLTAGE SWITCHGEAR JOINTING ITEMS	1.00	EA	73.53	0.00		Y
TELECOMS UNIT FOR DATA & PLANT CONTROL	11.00	EA	17,306.93	0.00	Y	
TELECOMMUNICATIONS SYSTEM MODIFICATION	1.00	ST	25,603.84	0.00		Y
PROVISION OF TELECOMS	1.00	ST	84,037.15	0.00		Y
SUBSTATION EARTHING	1.00	ST	945.41	0.00	Y	
SUBSTATION EARTHING	1.00	ST	10,908.36	0.00		Y
EMERGENCY TRIP BUTTON	1.00	EA	200.73	0.00	Y	
HIGH SECURITY SUBSTATION LOCKS & LABELS	1.00	PAK	219.18	0.00	Y	
HIGH SECURITY SUBSTATION LOCKS & LABELS	1.00	PAK	632.23	0.00		Y
SUBSTATION 110V BATTERY INCLUDING CHARGER	1.00	EA	5,069.24	0.00	Y	
GENERATOR FUEL	1.00	EA	33,281.33	0.00	Y	
SUBSTATION PLINTH	1.00	EA	3,220.61	0.00		Y
ENGINEERING & MANAGEMENT (TOTAL LABOUR)	1.00	ST	2,752.38	0.00		Y
PROJECT MANAGEMENT (TOTAL LABOUR)	1.00	ST	1,934.10	0.00	Y	
PROJECT MANAGEMENT (TOTAL LABOUR)	1.00	ST	1,301.76	0.00		Y
SCADA ENGINEER (TOTAL LABOUR)	1.00	ST	1,834.92	0.00		Y
CRAFTSMAN/ENGINEER TIME (TOTAL LABOUR)	1.00	ST	6,725.63	0.00		Y
PROTECTION ENGINEERING WORKS (TOTAL LABOUR)	1.00	ST	10,092.05	0.00		Y
SUPPLY & INSTALL FIBRE JOINTS	1.00	EA	1,887.41	0.00		Y
MULTICORE CABLE & COUPLINGS	1.00	ST	452.32	0.00		Y
<b>Sub Total</b>			<b>£281,429.61</b>	<b>£0.00</b>		
<b>G CIC FINAL WORKS PHASED ENERGISATION</b>						
WITNESS TESTING SUBSTATION	1.00	EA	700.00	0.00		Y
WITNESS TESTING G59	1.00	EA	375.00	0.00		Y
ENGINEERING & MANAGEMENT (TOTAL LABOUR)	1.00	ST	2,752.37	0.00		Y

Description Of Works	Proposed Quantity	Measure	Customer Contribution	SPM Contribution	Contestable	Non Contestable
PROJECT MANAGEMENT (TOTAL LABOUR)	1.00	ST	208.28	0.00		Y
CRAFTSMAN/ENGINEER TIME (TOTAL LABOUR)	1.00	ST	336.28	0.00		Y
<b>Sub Total</b>			<b>£4,371.93</b>	<b>£0.00</b>		

H CIC INSPECT AND MONITOR OF CONT WRKS						
Description Of Works	Proposed Quantity	Measure	Customer Contribution	SPM Contribution	Contestable	Non Contestable
INSPECTION AND MONITORING LEVEL 1	1.00	EA	400.00	0.00		Y
<b>Sub Total</b>			<b>£400.00</b>	<b>£0.00</b>		

I LAND RIGHTS						
Description Of Works	Proposed Quantity	Measure	Customer Contribution	SPM Contribution	Contestable	Non Contestable
WAYLEAVE AND LAND ACCESS FEES	1.00	EA	1,924.00	0.00	Y	
WAYLEAVE AND LAND ACCESS FEES	1.00	EA	1,850.00	0.00		Y
EASEMENT / SERVITUDE FEES	1.00	EA	1,040.00	0.00	Y	
CAD DRAUGHTSMAN (TOTAL LABOUR)	1.00	ST	383.92	0.00	Y	
<b>Sub Total</b>			<b>£5,197.92</b>	<b>£0.00</b>		
<b>TOTAL CONNECTION CHARGE</b>			<b>£457,266.34</b>			

In Process



## YOUR POC OFFER

SP Energy Networks will complete the non-contestable work only. It is your responsibility to appoint an accredited independent connection provider (ICP) to work alongside SP Energy Networks to complete the contestable work.

Should you choose to use an ICP to work alongside SP Energy Networks to complete the contestable work your ICP will need to submit the following documents no later than four months from the date of this offer:

- The contestable design.
- Written confirmation from you of their appointment as your contestable work provider.
- Where relevant, confirmation of compliance with the CDM regulations.
- Where necessary, details of any subcontractor to be used in the completion of the Contestable Works.

### **Summary of the proposed works**

#### **Non contestable works associated with the POC**

SPEN to fit new 11kV breaker panel and connect the customers installation and the costs with installing and commissioning the protection panel for the NVD protection.

Scottish Power Energy Networks to provide 1x telecoms termination at Leighton Hospital Primary, 15m excavation, lay and reinstatement of telecoms straight joint at substation compound boundary for the installation of SCADA for operational monitoring. Scottish Power Energy Networks to carry out 1x termination at customer substation.

SPEN to undertake witness test on the Customer's G99 protection for Customer high voltage metered circuit breakers. Time allowed one normal working day.

#### **Load**

We shall install and connect a High Voltage (11kV) supply with an import capacity of 650kVA and export capacity of 4000kVA operating between 0.99 lead and 0.95 lead will apply with the load balanced over three phases.

#### **HV connection of customers network**

Make off 1 x high voltage straight joints adjacent Leighton Hospital Primary Substation

#### **POC grid reference**

POC area grid ref: 368158, 357794

The following restrictions and constraints on the availability of the export capacity shall apply:-

- a) The connection provided is "Unfirm".
- b) The Distributor may plan and execute other outages of its distribution system as mentioned in the Connection Agreement.

The above special conditions do not cater for the emergency situations, which may occur from time to time.

The Distributor also reserves the right to instruct generators to reduce or curtail power export and reactive power import during time of operational difficulties (or as so directed by our control engineer). The provision of this clause will be repeated in the Connection Agreement.

#### **A summary of the POC costs**

This table splits out the cost by the type of work being proposed. The connection charge is the cost associated with the work required to provide you with your connection assets. The diversion charge is the cost associated with the work required to divert any existing assets to enable your connection. The reinforcement charge is the cost associated with the work required to reinforce the electrical system to enable your connection.

Charge description	Connection	Diversion	Reinforcement
F3 OTHER LV SERVICES	84.90	£0.00	£0.00
F6 OHL	5,661.06	£0.00	£0.00
E CIC DESIGN APPROVAL OF CONT WRKS	2,500.00	£0.00	£0.00
F5 MAINS CABLES	12,164.90	£0.00	£0.00
F7 SUBSTATIONS	174,385.23	£0.00	£0.00
G CIC FINAL WORKS PHASED ENERGISATION	4,371.93	£0.00	£0.00
H CIC INSPECT AND MONITOR OF CONT WRKS	400.00	£0.00	£0.00
I LAND RIGHTS	1,850.00	£0.00	£0.00
<b>Total</b>	<b>201,418.02</b>	<b>0.00</b>	<b>0.00</b>

### A detailed breakdown of the POC costs

This table provides a detailed breakdown of the costs associated with the work being proposed. This table reflects the charges that are set out within our Common Connection Charging Methodology. This table also splits out the contestable and non-contestable elements of the work and any contribution made by SP Manweb plc.

Description Of Works	Proposed Quantity	Measure	Customer Contribution	SPM Contribution	Contestable	Non Contestable
E CIC DESIGN APPROVAL OF CONT WRKS						
CHARGE FOR DESIGN APPROVAL	1.00	EA	2,500.00	0.00		Y
<b>Sub Total</b>			<b>£2,500.00</b>	<b>£0.00</b>		

F3 OTHER LV SERVICES						
EXCAVATE/LAY 1 LOW VOLTAGE SERVICE CABLE (AGRICULT	3.00	M	84.90	0.00		Y
<b>Sub Total</b>			<b>£84.90</b>	<b>£0.00</b>		

F5 MAINS CABLES						
EXCAVATE/LAY 1 11KV 3-CORE CABLE (FOOTWAYS)	25.00	M	2,414.02	0.00		Y
LAY ONLY HIGH VOLTAGE CABLE (INCLUDING SAND)	35.00	M	1,019.66	0.00		Y
HIGH VOLTAGE JOINTING	1.00	EA	454.19	0.00		Y
PICK UP, DELIVER & RETURN MATERIALS	1.00	ST	486.03	0.00		Y
PROJECT MANAGEMENT (TOTAL LABOUR)	1.00	ST	2,112.61	0.00		Y
SCADA ENGINEER (TOTAL LABOUR)	1.00	ST	917.45	0.00		Y
INSTALLATION OF PILOT/FIBRE CABLE (ROAD)	15.00	M	1,900.79	0.00		Y
INSTALLATION OF PILOT/FIBRE CABLE (INC SAND)	15.00	M	60.29	0.00		Y
PROTECTION/TELECOMMS JOINTING WORKS	1.00	EA	58.37	0.00		Y
SUPPLY & INSTALL FIBRE JOINTS	2.00	EA	2,741.49	0.00		Y
<b>Sub Total</b>			<b>£12,164.90</b>	<b>£0.00</b>		

F6 OHL						
POLE MOUNTED TRANSFORMER	1.00	EA	2,697.15	0.00		Y
POLE MOUNTED TRANSFORMER CONNECTION KIT	1.00	EA	719.45	0.00		Y
PROJECT MANAGEMENT (TOTAL LABOUR)	1.00	ST	2,112.61	0.00		Y
CONNECT LOW VOLTAGE CABLE ONTO FUSE UNIT	1.00	EA	131.85	0.00		Y
<b>Sub Total</b>			<b>£5,661.06</b>	<b>£0.00</b>		

F7 SUBSTATIONS						
CONNECT HIGH VOLTAGE CABLE ONTO SWITCHGEAR	1.00	EA	705.60	0.00		Y
HIGH VOLTAGE FEEDER PANEL	1.00	EA	24,157.44	0.00		Y
HIGH VOLTAGE SWITCHGEAR JOINTING ITEMS	1.00	EA	73.53	0.00		Y
TELECOMMUNICATIONS SYSTEM MODIFICATION	1.00	ST	25,603.84	0.00		Y
PROVISION OF TELECOMS	1.00	ST	84,037.15	0.00		Y
SUBSTATION EARTHING	1.00	ST	10,908.36	0.00		Y
HIGH SECURITY SUBSTATION LOCKS & LABELS	1.00	PAK	632.23	0.00		Y
SUBSTATION PLINTH	1.00	EA	3,220.61	0.00		Y
ENGINEERING & MANAGEMENT (TOTAL LABOUR)	1.00	ST	2,752.38	0.00		Y
PROJECT MANAGEMENT (TOTAL LABOUR)	1.00	ST	1,301.76	0.00		Y
SCADA ENGINEER (TOTAL LABOUR)	1.00	ST	1,834.92	0.00		Y
CRAFTSMAN/ENGINEER TIME (TOTAL LABOUR)	1.00	ST	6,725.63	0.00		Y
PROTECTION ENGINEERING WORKS (TOTAL LABOUR)	1.00	ST	10,092.05	0.00		Y
SUPPLY & INSTALL FIBRE JOINTS	1.00	EA	1,887.41	0.00		Y
MULTICORE CABLE & COUPLINGS	1.00	ST	452.32	0.00		Y
<b>Sub Total</b>			<b>£174,385.23</b>	<b>£0.00</b>		

G CIC FINAL WORKS PHASED ENERGISATION						
WITNESS TESTING SUBSTATION	1.00	EA	700.00	0.00		Y
WITNESS TESTING G59	1.00	EA	375.00	0.00		Y
ENGINEERING & MANAGEMENT (TOTAL LABOUR)	1.00	ST	2,752.37	0.00		Y
PROJECT MANAGEMENT (TOTAL LABOUR)	1.00	ST	208.28	0.00		Y
CRAFTSMAN/ENGINEER TIME (TOTAL LABOUR)	1.00	ST	336.28	0.00		Y
<b>Sub Total</b>			<b>£4,371.93</b>	<b>£0.00</b>		

H CIC INSPECT AND MONITOR OF CONT WRKS						
INSPECTION AND MONITORING LEVEL 1	1.00	EA	400.00	0.00		Y
<b>Sub Total</b>			<b>£400.00</b>	<b>£0.00</b>		

I LAND RIGHTS						
WAYLEAVE AND LAND ACCESS FEES	1.00	EA	1,850.00	0.00		Y
<b>Sub Total</b>			<b>£1,850.00</b>	<b>£0.00</b>		
<b>TOTAL CONNECTION CHARGE</b>			<b>£201,418.02</b>			

In Process

## THE SCHEDULE

### Additional information and customer requirements

**SPPS Reference Number:** 616475525

**Site Address:** Leighton Grange Farm Middlewich Road Crewe Cheshire East CW1 4QQ (the "Site")

**Offer Date:** 28.09.2021

This Schedule provides important information and details of key responsibilities. It's important you read it so you fully understand Our Works and any works we require you to undertake. This will help ensure we meet your timescales and prevent delays.

Please be aware, we'll only start work when the following conditions have been met:

- (i) all relevant Consents, including Land Rights, have been obtained;
- (ii) you've complied with all the relevant provisions of the Agreement placing obligations on you in respect of such connection; and
- (iii) if you're required to provide the Substation Accommodation, our acceptance of the Substation Accommodation and associated building work.

If all Our Works aren't completed within 12 months from the date of our receipt of your unqualified acceptance of this offer, we'll be entitled to amend and/or vary any terms and conditions of this offer and/or the Agreement, including, without limitation, the Charge(s) and/or other payments, to the extent that it is reasonable to do so.

We're entitled to determine, at our sole discretion, whether further studies are required as a result of the actual connection and/or design parameters of your Electrical Installation/Your Works differing from that provided by you. Where such studies are required we'll be entitled to revise the works, the charge and all dates specified in this agreement by giving written notice to this effect and this offer once accepted shall be read and construed as if such revisions were incorporated in it.

The offer only relates to Our Works at the site. It does not cover works on your Electrical Installation.

### Land Rights

The term "Land Rights" is used as a collective term used by Us to cover the acquisition of property rights, such as freehold and leasehold interests, a lease or purchase or servitudes, easements or wayleaves, that We will require to be in place for Our Works before we can connect your project to the Distributor's System.

Our Land Rights approach is to obtain the most appropriate Land Rights in order to maintain a secure supply of electricity to You.

Responsibilities - You do / We do

You should take the following key factors into consideration when planning your connection:

- We do not seek such consents until You have accepted this Offer
- We require the consent of any land owner affected by Our Works prior to beginning Our Works.
- The timescales associated with obtaining Land Rights may affect the timescales for connection

of your project to the Distributor's System, however, We will keep you updated at reasonable intervals.

- We cannot undertake Our Works on third party land until all Land Rights have been obtained.
- Typical timescales in order to secure Land Rights may be between 3 and 45 weeks, however, timescales will vary depending on the type and complexity of the project.

We will keep you regularly informed as to the progress towards gaining our Land Rights.

### **Cost of Land Rights**

There will be a cost payable by You attributable to obtaining Land Rights for Our Works. This cost may be subject to variation following Your acceptance of this Offer Letter and any necessary land referencing having been carried out. We will inform You of any changes to this cost.

### **Your Safety**

To avoid danger from cables and overhead lines, it is very important that you, your contractors and subcontractors follow the advice given in the Health and Safety Executive (HSE) documents HSE HSG 47 Avoiding Danger from Underground Services and HSE GS 6 Avoidance of Danger from Overhead Electric Power Lines, which can be found at: [www.hse.gov.uk](http://www.hse.gov.uk).

It is essential that the Electrical Installation is constructed and installed according to the British Standard Requirements for Electrical Installations BS 7671:2008 IEE Wiring Regulations 17th Edition. The Electrical Installation shall be inspected and tested in accordance with the general provisions of such British Standard Requirements and, where applicable, the Electricity Safety, Quality and Continuity Regulations 2002.

Further guidance relating to safety can be found at: [www.spenergynetworks.co.uk/safety](http://www.spenergynetworks.co.uk/safety)

## KEY RESPONSIBILITIES

### **Point of Connection (POC) offer**

#### **The Customer shall:**

The responsibilities of the Customer to be discussed with the ICP for the POC Offer.

#### **We shall:**

Please note that the Charge for the POC Offer includes the following costs:

- Design Approval of the Contestable Work.
- Inspection and Monitoring of the Contestable Work.
- Witness Testing.
- Final Works Phased Energisation
- Provision of Wayleaves/ Easements

Works to accommodate the POC:

SPEN to fit new 11kV breaker panel and connect the customers installation and the costs with installing and commissioning the protection panel for the NVD protection.

Scottish Power Energy Networks to provide 1x telecoms termination at Leighton Hospital Primary, 15m excavation, lay and reinstatement of telecoms straight joint at substation compound boundary for the installation of SCADA for operational monitoring. Scottish Power Energy Networks to carry out 1x termination at customer substation.

SPEN to undertake witness test on the Customer's G99 protection for Customer high voltage metered circuit breakers. Time allowed one normal working day.

### **Full Works Offer**

#### **The Customer shall:**

Provide free and uninterrupted access and egress to the works.

Undertake the site works including generators, transformers, cables, protection, telecommunications equipment and the installation of the Customer's 11kV circuit breakers, protection, earthing systems, telecommunications equipment and meters.

Provide a levelled and drained substation site, and indoor accommodation to accommodate our 11kV switchgear, associated metering, protection and telecommunications equipment.

Provide a suitable access from the public highway to the compound/Substation location, suitable for the transportation of our equipment and future maintenance/operational access.

Provide a Low Voltage single phase supply for our battery charger and accommodation for this equipment.

Undertake all on site excavation including road crossing, mains and service ducting (appropriate for utility), backfill including the removal of all excess arising materials and permanent reinstatement. All trenches must be blinded with graded sand before and after cable(s) are installed.

Ensure that the excavations are completed as per National Joint Utilities Group (NJUG) recommendations. The excavations should be carried out on a just-in-time basis with prior agreement from us and to our satisfaction. Please refer to the NJUG website for further information: [www.njug.org.uk/category/3/pageid/5/](http://www.njug.org.uk/category/3/pageid/5/)

Provide and construct the Substation Accommodation in accordance with the specification contained within our SUB-03-017 document, which can be found within the Specification Documents section of our website, and installed at the location indicated on approved design

Reimburse our reasonable legal and/or surveying expenses and/or costs with regard to the negotiation, preparation and completion of the lease referred to above and pay the Stamp Duty (if any) in relation to any such lease.

### **Disturbance on our Distribution System**

The Generating Plant output and connected load must not cause disturbances on our Distribution System and it is essential that your load characteristics comply with the requirements of Engineering Recommendations G5/5-1 (Limits for Harmonics), P13/1 (Electric motors - Starting Conditions) and P28 (Planning Limits for Voltage Fluctuations). You must submit full details of any load which might cause disturbances, before connection of your installation (including the Generating Plant) whether covered by these guidance documents or not, for our consideration. Further information is available on request.

### **Protection Relays**

Provide and install protection relays as agreed with us. Further information is available on request.

### **Substation**

You shall provide the Substation accommodation civil works in a location approved by us and in accordance with our guidance drawings and specifications. All relevant drawings must be submitted to us before the commencement of the works.

You shall ensure that the land upon which the Substation Accommodation will be constructed is free from any environmental hazards contamination or pollution and also free from any conducting media including mains drains, sewers, pipes, wires or cables which would prevent or restrict or interfere with the operation of the substation equipment or impose any financial obligations or burdens on us. You shall be responsible for any works or costs required to comply with the obligations and conditions contained in this paragraph.

### **Appointment of Electricity Supplier**

This letter is an offer for Connection(s) to the our system only. It is essential that an Electricity Energy Supplier is appointed by you. On our receipt of your signed and dated unqualified acceptance of this offer, we will send you the MPAN(s) (Meter Point Administration Number) for the Connection(s). This number is unique to each Connection and will be required by the

chosen Electricity Energy Supplier(s) to supply and fit your import/export meter(s) and register a Connection.

Please note that there will be a period of time between the appointment of an Electricity Energy Supplier and the instruction from the Electricity Energy Supplier to energise a Connection.

An Electricity Energy Supplier is the company who you enter into an agreement with for the supply and payment your electricity. We are not an Electricity Energy Supplier; therefore, we will not install your import/export meter(s).

**We/ICP shall:**

Please refer to attached plan of works.

Obtain Wayleave(s)/easement(s) from third party land owner(s).

Obtain necessary consents for Substation plant.

Nationally agreed compensation payment negotiations with individuals or organisations e.g. crop loss or land damage. This excludes any third party commercial compensation payment charges which will have to be negotiated separately by the Customer or their Agent

In Process

**Assumptions and Clarifications**

Our offer is based on the assumptions and clarifications below; however, should any of these assumptions and/or clarifications change we shall be entitled to revise the works, the charge and all dates specified in this agreement by giving written notice to this effect and this offer once accepted shall be read and construed as if such revisions were incorporated in it.

**Normal Working Hours**

Our offer is based on all works being carried out during Normal Working Hours (Monday to Friday 08.30hrs to 16.30hrs) excluding any public holidays applicable to the Site. We have made no allowance for a third party requirement which results in us having to work out with Normal Working Hours or reduce the working day.

**Excavation and Reinstatement**

When you have agreed to carry out works associated with excavating in public land (footpath, carriageway, verge etc) you will be responsible for attaining necessary permissions/consents, insurance, indemnities, road opening notices and securing the excavation area. Furthermore, to mitigate the Health, Safety and Environmental risks incumbent with the foregoing, it is your responsibility to provide suitable plant and operatives to facilitate backfilling and reinstatement works without delay following the completion of Our Works.

The route upon which our offer is based assumes the following:

- Maximum of 145m track within tarmac footpath
- Maximum of 15m track within carriageway
- Maximum of 310m track within grass verge
- Maximum of 1 No. joint hole within tarmac footpath



Maximum of 1 No. joint hole within grass verge

We have allowed for reinstating a maximum of 75mm each side of our excavations in accordance with the Highway/Road Authorities and Utilities Committee (HAUC(UK)/RAUC(Scotland)) specification.

We have made no allowance for dealing with the excavation and removal of any unforeseen hard materials. e.g. rock, concrete or reinforced concrete etc.

We have made no allowance for costs associated with specialist contractor excavation/reinstatement of non standard surface types. e.g Granite Sets, Caithness slabs etc.

We have made no allowance for working in or the treatment of and/or removal of contaminated/hazardous materials or for the rectification of unavoidable land damage. e.g. field drains, crop damage etc.

Our proposed route has been established without reference to site investigation and/or trial hole details. Should an alternative/deviated route be required we will provide you with details of the revised route together with any additional costs.

No allowance has been made for any noise studies, geotechnical and earthing surveys and other appropriate technical investigations of ground conditions, environmental impact surveys, studies and/or statements. If these studies, etc. are required you will be required to cover any reasonable costs (including the costs of using external specialists and legal costs) associated with this work. Should such subsequent studies show that additional works are required it will be your responsibility to cover the cost of this work.

Our offer excludes any restrictions and associated costs that may be imposed by Water Authorities, Road Authorities, National Grid (or S.G.N. or similar relevant Utility Asset Owning Company), any DNO, IDNO or relevant Utility Asset Owning Company), S.E.P.A., Rail Authorities, Forestry Commission or similar Authorities/Organisations.

We have not seen or been provided with copies of any reports pertaining to environmental, animal welfare, archaeological digs, areas of special scientific interest, hydrological and topographical matters.

### Traffic Management

This offer does not include specialist traffic management Contractor costs e.g. costs associated with installing and maintaining contraflow systems, road closures, restricted/altered parking arrangements. Furthermore we have made no allowance for costs associated with parking restrictions, local authority permits, statutory fees, charges and the like.

A provisional sum has been included within the offer to account for costs above.

Where you are carrying out excavation and/or reinstatement, you shall provide signage, pedestrian barriers, traffic barriers, traffic management, lighting, earthwork support and dewatering.

Please note that in addition to the timings set out in clause 7 of the Conditions the work you require us to carry out may be in an area which the Local Authority class as Traffic Sensitive under the New Roads and Street Works Act 1991 or where the duration of the works will be ongoing in the highway for 10 days or more. In order to carry out these works, we must give the relevant authority three months notice prior to commencement of Traffic Sensitive works or working in any street where the duration of the works will be ongoing in the highway for 10 days or more. We will

only provide this notice upon receipt of the signed acceptance and agreed payment.

### Security

Security for the on site works shall be provided free of charge by you. You are responsible for insuring the works against loss, theft or damage for the duration of our works. Any loss or damage necessarily incurred by us, howsoever caused, shall be recompensed to us.

### Connection Agreement

A Connection Agreement will be required, and needs to be completed before your installation can be energised. The site specific details (including these in the Offer Letter) will need to be included and any technical or other conditions we may need to impose.

Any installation for generation must comply with the requirements of the Electricity Safety, Quality and Continuity Regulations 2002 and the principles of Engineering Recommendation G99 and G75/1 issued by the Energy Networks Association and with the requirements embodied in G5/5-1 and P28 at the connection point. Precise methods of protection and mode or restriction of operation (e.g. Voltage regulation) to be agreed subsequently between both parties and written into the Connection Agreement.

In addition to P28 if your generation causes a voltage depression greater than 1%, no similar voltage depression should be caused within two hours. This is to be achieved by a timing relay. Precise methods of protection and mode or restriction of operation (e.g. Voltage regulation) to be agreed subsequently between both parties and written into the Connection Agreement.

### Connection/Energisation of Generating Plant

We are not obliged to permit connection of your installation (including the Generating Plant) directly or indirectly to the Distribution System unless we are satisfied such Generating Plant will not cause danger to or undue interference with our Distribution System or supply to others. The point of connection will be at the outgoing terminals of the metering unit. We shall not be obliged to permit connection of the installation to the Distribution System nor to energise the Connection Point unless all payments due under this Agreement at that time have been made.

### Phase Balance and Power Factor

The Generating Plant output and connected load must be balanced over the three phases and across the circuits, complying with Engineering Recommendation P29 (Planning Limits for Voltage Unbalance). The vector sum of the real and reactive power should not exceed the kVA limit as specified.

### Distribution Code

Both parties shall comply with their respective obligations as in the Distribution Code. Other relevant regulations include the Electricity Safety, Quality and Continuity Regulations 2002. Your attention is drawn to the provisions of our Distribution Code under which we are required to prepare and agree with you a responsibility schedule and an operation diagram showing the agreed ownership boundaries. We also refer you to the Electricity at Work Regulations 1989 and the need to ensure that high voltage equipment is operated by competent persons

### Emergency Trip Facilities

An individual emergency trip facility will be provided adjacent to the Connection Point metering

panel for connection. This will enable you to disconnect your own incoming high voltage supply in an emergency. (We will be required to re-set this trip facility and re-energise the supply).

### Special Generation Connection Conditions

Schedule 4 of the Connection Agreement sets out the details of these conditions. Some of these conditions will apply prior to the connection being made.

The following restrictions and constraints on the availability of the export capacity shall apply:-

- a) The connection provided is "Unfirm".
- b) During System Normal the maximum export capacity is as stated in part 2 Connection Characteristics above.
- c) We may plan and execute other outages of the distribution system as mentioned in the Connection Agreement.

The above special conditions do not cater for the emergency situations, which may occur from time to time. We may also reserves the right to instruct generators to reduce or curtail power export and reactive power import during time of operational difficulties (or as so directed by our control engineer).

### Desk-Top Assessment

This offer and the enclosed design are based upon a desk-top assessment utilising information from existing utility records and information provided by the Customer at the time of application. On occasion the enclosed design may require to be altered. It will be the Customer's responsibility to pay for any reasonable and necessary additional costs incurred, including any additional cables, lines or works, in the following circumstances:

- a) where, following completion of a survey of the route, an alternative route is required or deviations to the proposed route are required; and/or
- b) where technical investigations of ground conditions demonstrate that additional work or amendments to the proposed works are required.

We will notify the Customer of any additional charges which shall be payable in accordance with the provisions of this Agreement. Where the findings of the survey(s) and/or technical investigations result in a rebate of charges, you shall be notified by us of the amount of the rebate and the timescales within which payment shall be returned to you.

Should you otherwise require any changes to the enclosed design, please inform us as soon as possible in order that we might consider any necessary changes to the scope of Our Works.

### Additional Charges

In addition to the Connection Charge we may require you to pay additional charges. Such charges will be payable in accordance with the provisions of this Agreement. We will notify you from time to time of any such additional charges.

This offer is based on the following:

- a) The proposed route is based upon a desk-top assessment and initial survey. If an alternative route is required or deviations to the proposed route increase the overall route length you will pay for any reasonable and necessary additional costs incurred to facilitate the provision of that new route including any additional cables, lines or works and we will revise the Connection Charge

accordingly.

b) No allowance has been made in this offer for any noise studies, ground surveys, earthing studies, environmental impact surveys, studies and/or statements. If these studies, etc. are required you will pay our reasonable costs (including the costs of using external specialists and legal costs) associated with this work. If any reasonable additional costs arise out of the need to meet the requirements of these studies then you will pay for the cost of this work.

### **Connection Agreement and Site Responsibility Schedule**

All standard Low Voltage demand connections, single phase generation and micro generation (connected under Engineering Recommendation G83) are subject to the National Terms of Connection (NTC) as published by the Energy Networks Association (ENA) at:

[www.connectionterms.co.uk](http://www.connectionterms.co.uk)

For all other connection types, a Site-specific Connection Agreement and interface Site Responsibility Schedule will require to be completed and entered into prior to the Connection being energised.

### **INTERACTIVITY**

Your application for a connection may become an Interactive Connection Application as defined in Our Statement of Methodology and Charges for Connection To SP Distribution plc and SP Manweb plc's Electricity Distribution Systems (the "Statement") In the event this happens We will let You know as soon as possible and issue a "Notice of Interactivity" which will set out the alternative procedures and timescales that will apply with regard to Your ability to accept the Offer.

### **CHARACTERISTICS OF CONNECTION**

Facility	-	Leighton Grange Farm
Energy Source	-	PV
Maximum Import Capacity	-	no change to existing characteristics
Maximum Export Capacity	-	4000kVA
Voltage	-	11,000V, 3 Phase, Alternating Current, 50Hz

### **TARGET DATE**

The Target Date is made on the basis that:

You have provided Us with a copy of the construction programme for the Customer's Works (the Customer's Construction Programme") at an early stage, but no later than 4 weeks following acceptance of this Offer; and  
the commencement date of the Works is within 4 weeks following acceptance of this Offer.

The Target Date is also subject to and dependent upon the following:

Our agreement of the Customer's Construction Programme;  
Obtaining Outages;  
Obtaining any required Consents;  
Completion of any Associated Reinforcement Works; - delete if not applicable  
Availability of plant, equipment and local conditions; and  
Completion of the Customer's Works in accordance with the Customer's Construction Programme.

As the Target Date may also be contingent on necessary GB Transmission System upgrades, We reserve the right to vary the Target Date where instructed by NGET to do so.

Should You accept this Offer on the basis that You undertake the Contestable Works and We the Non Contestable Works having satisfied all conditions of acceptance, We will provide You with a programme for the Works.

## **ENERGISATION**

The Connection will not be energised until -

You have complied with the terms of the Agreement,  
A Connection Agreement is in place between You and Us or as the case may be between Us and the owner or occupier of the Premises,  
An appropriate meter (or meters) is/are installed at the Premises for the purpose of measuring and recording the consumption of electricity at the Premises,  
A licensed electricity supplier is registered as being the responsible supplier for the metering point(s) at the Premises,  
A meter operator has been appointed for the metering point(s) at the Premises, and  
All legal Consents have been completed.

## **CONSENTS**

You will be responsible for providing the Consents in accordance with the General Conditions.

We may request that You provide Us with evidence of having achieved Consents before We can proceed with undertaking any Works.

Negotiating land rights is contestable, however We will make a charge to ensure that the rights that are negotiated comply with Our requirements. Where You wish Us to negotiate and obtain the land rights as Your chosen contractor then please contact Us directly for a quotation for Your design.

## **CONNECTION CHARGE**

The Connection Charge is indicative and may be subject to revision by Us. We reserve the right to provide You with a revised Connection Charge at a later date following completion of detailed engineering design, route proving completed and tender returns for all major plant items, works and any other material expenditure associated with the Works have been received.

Further variations to the Connection Charge may be made in accordance with the General Conditions.

The Connection Charge has been determined in accordance with the "Statement" which can be found at:

<http://www.spenergynetworks.co.uk/dgis/doc/statementofmethodology.pdf>

## **ADDITIONAL CHARGES**

In addition to the Connection Charge stated above, We may require You to pay additional charges as detailed below. Such charges will be payable in accordance with the provisions of this Agreement. We will notify You from time to time of any such additional charges.

This Offer is based on the following:

a) The proposed route is based upon a desk-top assessment and initial survey. If an alternative route is required or deviations to the proposed route increase the overall route length You will pay for any reasonable and necessary additional costs incurred to facilitate the provision of that new route including any additional cables, lines or works and We will revise the Connection Charge accordingly.

b) No allowance has been made in this Offer for any noise studies, geotechnical and earthing surveys and other appropriate technical investigations of ground conditions, environmental impact surveys, studies and/or statements. If these studies, etc. are required You will pay Our reasonable costs (including the costs of using external specialists and legal costs) associated with this work.

Should such subsequent studies show that additional works are required to enable the Proposed Development to be connected to the Distribution System, it will be Your responsibility to pay for the cost of this work. We shall be entitled to amend the Connection Charge for the Works accordingly.

c) You are responsible for the removal (and disposal) and for the cost of the removal and disposal of any contaminated land, soil, etc from the Site and making good the Site.

### **REVISION OF OFFER**

We are entitled to determine, in its sole discretion, whether further studies are required as a result of the actual connection and design parameters of Proposed Development differing from that provided by the You to Us in Your application for this Offer.

Where such studies are required We shall be entitled to revise the Works, the Connection Charge and any dates specified in this Agreement by giving written notice to this effect to You and this Agreement shall be read and construed as if such revisions were incorporated in it.

You are required to provide Us with actual data as soon as it becomes available to You. Should subsequent studies of any actual data provided by You show that additional works are required to enable the Proposed Development to be connected to the Distribution System, it will be Your responsibility to fund the whole cost of any additional costs and expenses that We may incur as a result, including the cost of any additional studies required to be undertaken. In such circumstances, We shall be entitled to revise the Works, the Connection Charge and all dates specified in this Agreement by giving written notice to this effect to the customer and this Agreement shall be read and construed as if such revisions were incorporate in it.

### **VALIDITY PERIOD**

Unless a notice of interactivity has accompanied this Offer, or is sent to You prior to Your acceptance of the Offer, the Offer shall remain valid until 29 December 2021 and unless accepted within this period shall lapse thereafter.

During the period of its validity the Offer shall at all times be conditional on the continuing availability of the necessary capacity within the Distribution System.

If the Offer is not accepted within the Validity Period it shall lapse immediately thereafter, unless otherwise agreed in writing.

### **VARIATIONS**

Once You have accepted the Offer (whether the Full Offer or the Point of Connection Offer) a

contract will have been formed between You and Us for Us to make the Connection in accordance with the accepted Offer (the Agreement).

The Agreement may be varied either -

(a) in accordance with the General Conditions, or

(b) as otherwise agreed in writing between You and Us.

## **TERMINATION**

You shall be entitled to terminate the Agreement (this Offer Letter and Your acceptance shall be referred to as "the Agreement") at any time on giving not less than 3 weeks' prior written notice Us and the Agreement shall terminate on expiry of such notice. Notwithstanding such termination, You shall be obliged to make a payment to Us of all costs, charges and expenses suffered or incurred by Us.

We shall use all reasonable endeavours to mitigate any such costs, charges and expenses for which You would be liable forthwith on receipt of such notice of termination and shall make a fair and reasonable allowance for the value of any plant, materials and equipment retained by Us. Title to any plant, equipment and materials, which is not so retained by Us shall, at the Your option, transfer to You.

We may terminate the Agreement if a Construction & Adoption Agreement is required in respect of the infrastructure relating to the Contestable Works and it is not entered into within 90 days of the Construction & Adoption Agreement being issued to You.

The Agreement may also be terminated in accordance with the General Conditions.

**QAS 616475525**  
 Leighton Grange Farm, Middlewich Road,  
 Crewe, CW1 4QQ  
 X- Intermediate joints  
 SCADA req  
 4MW Export PV  
 Current declared capacity 650kVA  
 Install Length 1600M 185mm XLPE  
 install Length 1600M Fibre  
 Install Length 1600M HV Earthing  
 G99 Witness test Req

Extend board in Leighton Hospital (Genie EVO)

Install inspection chamber on corner

Road Crossing - install 3x 150mm red electric ducts

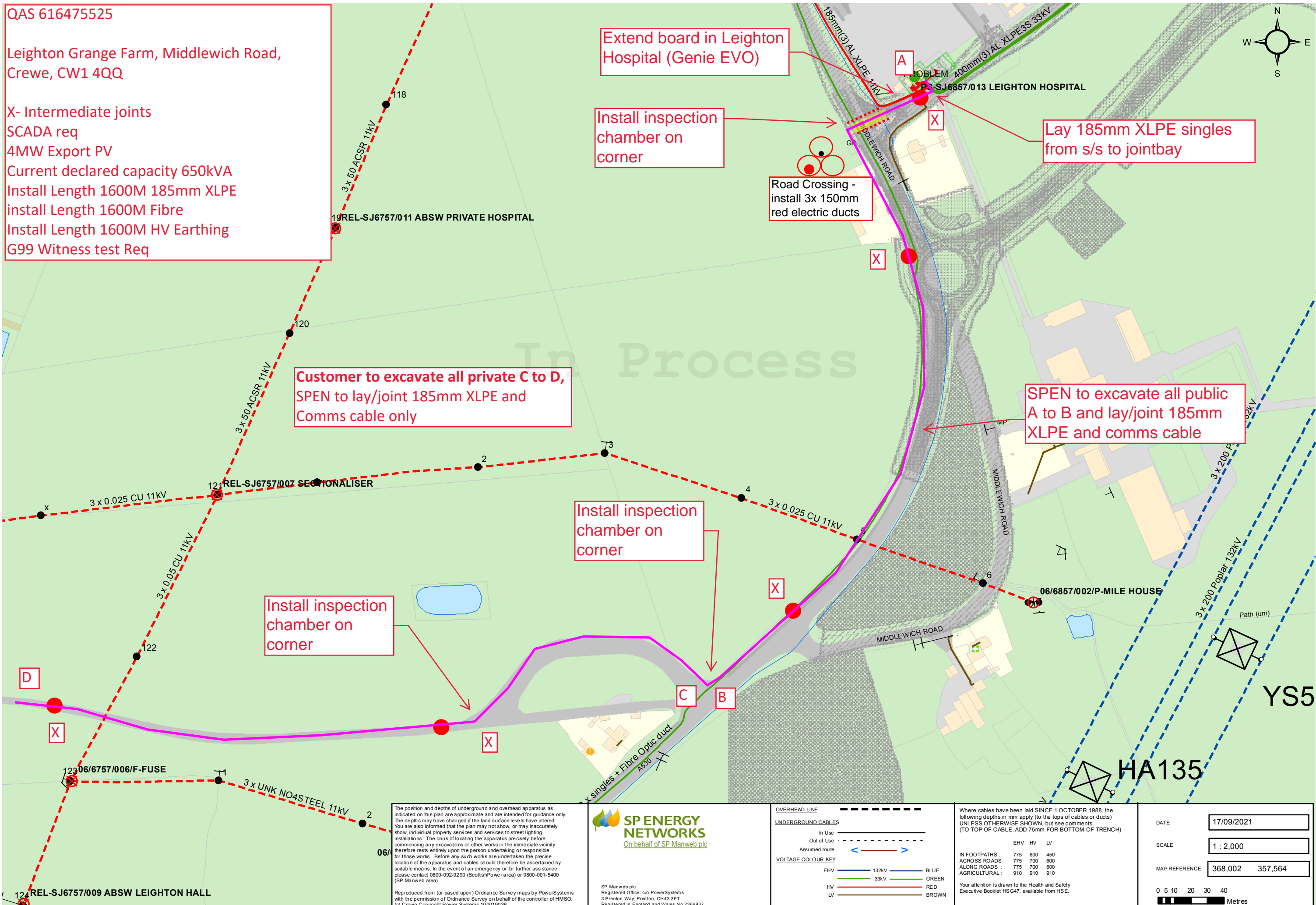
Lay 185mm XLPE singles from s/s to jointbay

Customer to excavate all private C to D, SPEN to lay/joint 185mm XLPE and Comms cable only

SPEN to excavate all public A to B and lay/joint 185mm XLPE and comms cable

Install inspection chamber on corner

Install inspection chamber on corner



The position and depths of underground and overhead apparatus as indicated on this plan are approximate and are intended for guidance only. The depths may have changed if the land surface levels have altered. You are also informed that the plan may not show, or may inaccurately show, individual property services and services to street lighting installations. The onus of locating the apparatus precisely before commencing any excavations or other works in the immediate vicinity therefore rests entirely upon the person undertaking or responsible for those works. Before any such works are undertaken the precise location of the apparatus and cables should therefore be ascertained by suitable means. In the event of an emergency or for further assistance please contact 0800-092-9290 (ScottishPower area) or 0800-001-5400 (SP Manweb area).  
 Reproduced from (or based upon) Ordnance Survey maps by PowerSystems with the permission of Ordnance Survey on behalf of the controller of HMSO. (c) Crown Copyright Power Systems 100019036.

**SP ENERGY NETWORKS**  
 On behalf of SP Manweb plc

SP Manweb plc  
 Registered Office: c/o PowerSystems  
 3 Prenton Way, Prenton, CH43 3ET  
 Registered in England and Wales No 2366937

OVERHEAD LINE	
IN USE	---
OUT OF USE	---
ASSUMED ROUTE	---
VOLTAGE COLOUR KEY	
EHV	132kV BLUE
HV	33kV GREEN
LV	RED BROWN

Where cables have been laid SINCE 1 OCTOBER 1988, the following depths in mm apply (to the tops of cables or ducts) UNLESS OTHERWISE SHOWN, but see comments. (TO TOP OF CABLE, ADD 75mm FOR BOTTOM OF TRENCH)

	EHV	HV	LV
IN FOOTPATHS :	775	600	450
ACROSS ROADS :	775	700	600
ALONG ROADS :	775	700	600
AGRICULTURAL :	910	910	910

Your attention is drawn to the Health and Safety Executive Booklet HSG47, available from HSE.

DATE: 17/09/2021

SCALE: 1 : 2,000

MAP REFERENCE: 368,002 357,564

0 5 10 20 30 40 Metres



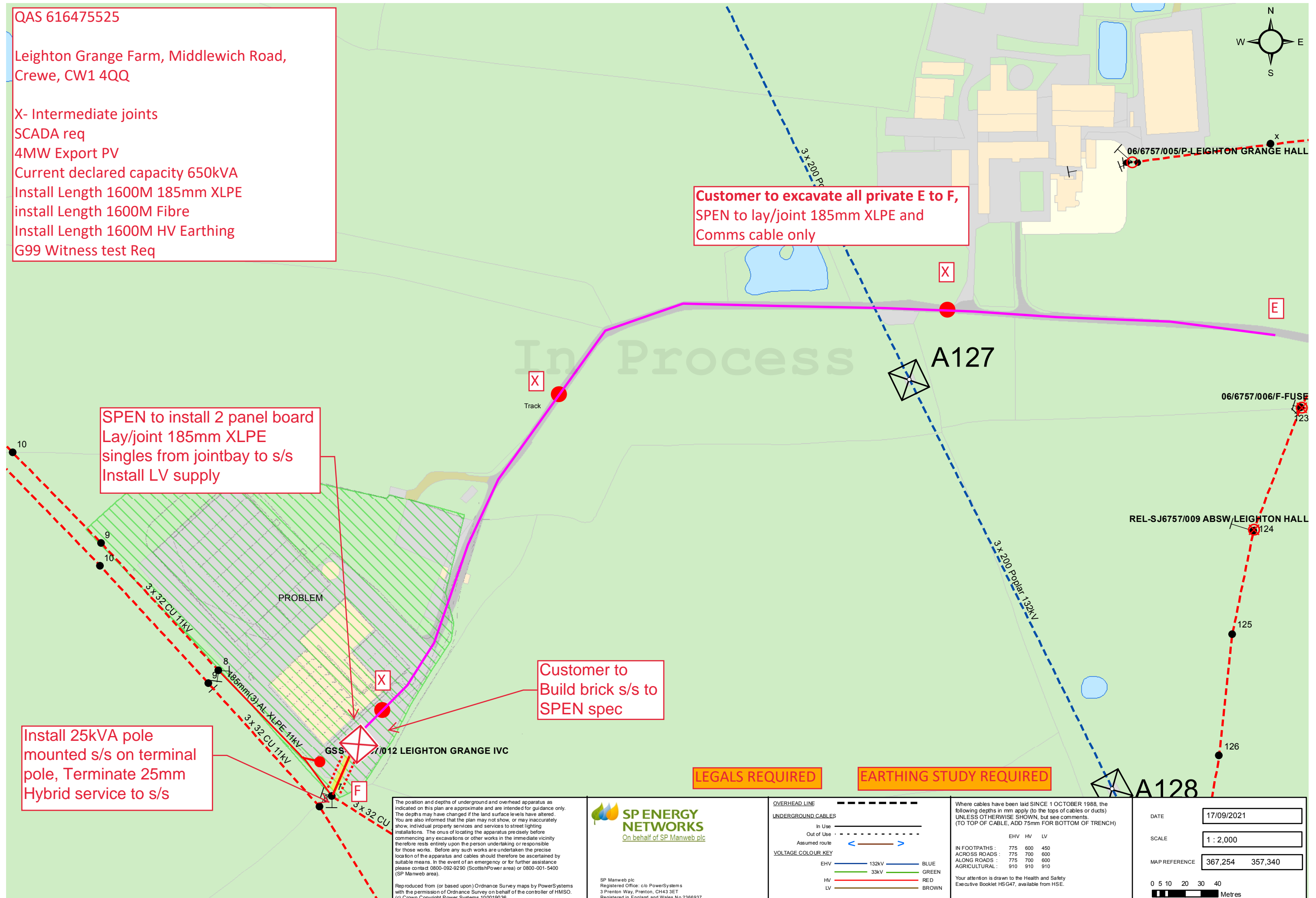
QAS 616475525  
 Leighton Grange Farm, Middlewich Road,  
 Crewe, CW1 4QQ  
 X- Intermediate joints  
 SCADA req  
 4MW Export PV  
 Current declared capacity 650kVA  
 Install Length 1600M 185mm XLPE  
 install Length 1600M Fibre  
 Install Length 1600M HV Earthing  
 G99 Witness test Req

Customer to excavate all private E to F,  
 SPEN to lay/joint 185mm XLPE and  
 Comms cable only

SPEN to install 2 panel board  
 Lay/joint 185mm XLPE  
 singles from jointbay to s/s  
 Install LV supply

Customer to  
 Build brick s/s to  
 SPEN spec

Install 25kVA pole  
 mounted s/s on terminal  
 pole, Terminate 25mm  
 Hybrid service to s/s



The position and depths of underground and overhead apparatus as indicated on this plan are approximate and are intended for guidance only. The depths may have changed if the land surface levels have altered. You are also informed that the plan may not show, or may inaccurately show, individual property services and services to street lighting installations. The onus of locating the apparatus precisely before commencing any excavations or other works in the immediate vicinity therefore rests entirely upon the person undertaking or responsible for those works. Before any such works are undertaken the precise location of the apparatus and cables should therefore be ascertained by suitable means. In the event of an emergency or for further assistance please contact 0800-092-9290 (ScottishPower area) or 0800-001-5400 (SP Manweb area).  
 Reproduced from (or based upon) Ordnance Survey maps by PowerSystems with the permission of Ordnance Survey on behalf of the controller of HMSO. (c) Crown Copyright Power Systems 100019036.

**SP ENERGY NETWORKS**  
 On behalf of SP Manweb plc

SP Manweb plc  
 Registered Office: c/o PowerSystems  
 3 Prenton Way, Prenton, CH43 3ET  
 Registered in England and Wales No 2366937

LEGALS REQUIRED

EARTHING STUDY REQUIRED

OVERHEAD LINE		---
UNDERGROUND CABLES		
In Use	—	
Out of Use	- - -	
Assumed route	— · — · —	
VOLTAGE COLOUR KEY		
EHV	132kV	BLUE
HV	33kV	GREEN
LV		RED
		BROWN

Where cables have been laid SINCE 1 OCTOBER 1988, the following depths in mm apply (to the tops of cables or ducts) UNLESS OTHERWISE SHOWN, but see comments. (TO TOP OF CABLE, ADD 75mm FOR BOTTOM OF TRENCH)

	EHV	HV	LV
IN FOOTPATHS :	775	600	450
ACROSS ROADS :	775	700	600
ALONG ROADS :	775	700	600
AGRICULTURAL :	910	910	910

Your attention is drawn to the Health and Safety Executive Booklet HSG47, available from HSE.

DATE: 17/09/2021

SCALE: 1 : 2,000

MAP REFERENCE: 367,254 357,340

0 5 10 20 30 40 Metres

# Your connection offer explained



**SP ENERGY  
NETWORKS**

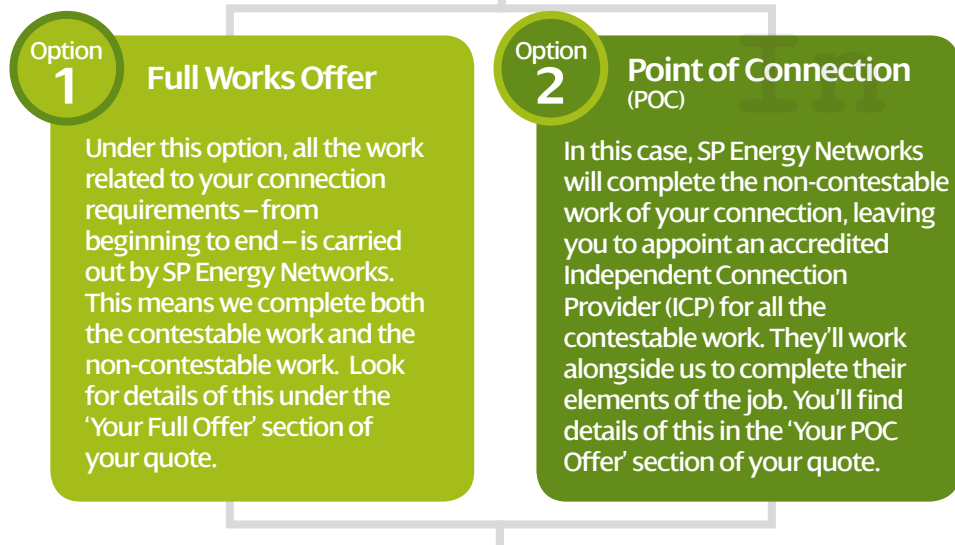
## You have the choice...

Now that you've received your quote, you can decide whether you want us to complete all elements of your connection from beginning to end or if you would prefer an alternative provider to carry out certain elements of the connection work.

The quotation we have provided gives you 2 options and will give you the details you need to make the right choice for you. We call this our Dual Offer.

### Understanding your Dual Quote

Your dual quote has been separated into 2 sections - Full Works, or Point of Connection.



<https://www.spenergynetworks.co.uk/use-of-services>

A complete list of contestable and non-contestable work can be found on our website:

[www.spenergynetworks.co.uk/use-of-services](http://www.spenergynetworks.co.uk/use-of-services)

Your Dual Offer provides a summary and detailed breakdown of the costs, for both options. You'll also find a schedule with additional information.

- If you choose SP Energy Networks to deliver your complete connection, we will charge for both the non-contestable and contestable work you ask us to carry out. It's important to note that we are unable to start work on your connection until we've received your payment and your signed acceptance form.
- If you opt for another company to do the contestable work, you will pay any applicable charges directly to them.
- If you have any questions regarding the offer, your designer will be delighted to help. You will find the contact details within your offer letter.

### Next steps...

Your quote is valid for 3 months from the date of the offer.

Before you make a decision, you should:



1. Read the full details of both the Full Works and the POC offers.

2. Also read the General Terms and Conditions for Connection [www.spenergynetworks.co.uk/terms](http://www.spenergynetworks.co.uk/terms)



3. If you choose to accept the POC option, you will need to appoint your own ICP/IDNO. For your safety, ICPs and IDNOs must possess the appropriate accreditations to carry out contestable works.

You'll find further information at:

ICPs - [www.lloydsregister.co.uk/schemes/NERS/](http://www.lloydsregister.co.uk/schemes/NERS/)

IDNOs - <https://www.ofgem.gov.uk/electricity/distribution-networks/connections-and-competition/independent-distribution-network-operators>



4. If you wish to accept your quote please complete the Letter of Acceptance, making sure you select only one of the options.



5. Consider the timing of your acceptance and the impact it may have on project timescales

### Changed your mind?

If you choose the POC option and then decide to opt instead for the Full Works option, we need to reimburse your payment and raise a new connection offer. It's important to note this as it may impact your project delivery timescales.

Further information can be found at: [www.spenergynetworks.co.uk](http://www.spenergynetworks.co.uk)





## Contacting us

If you need more help you can call your project designer, you will find their name and number on your quotation. Alternatively, you can contact us via the details below:

---

**Email:** [gettingconnected@scottishpower.com](mailto:gettingconnected@scottishpower.com)

### **Central and Southern Scotland:**

SP Energy Networks  
320 St Vincent Street, Glasgow, G2 5AD  
Tel: 0845 270 0785

### **Cheshire, Merseyside, North Wales and North Shropshire**

PO Box 290  
Lister Dr, Liverpool  
L13 7HJ

**Tel:** 0845 270 0783

---



**SP ENERGY  
NETWORKS**

## In An Emergency

If your machinery is in contact with an overhead power line, or within 5 metres of a grounded line, stay inside your vehicle until the Emergency Services or SP Energy Networks arrive **unless there's a real threat of fire.**

- Keep others away even if you're in the cab; someone else touching your vehicle could result in them receiving fatal injuries.
- If possible, use your mobile to give the **Emergency Services** an accurate location, or get someone else to call them; mention that overhead power lines are involved and ask them to contact SP Energy Networks.
- If you have to get out, do not step out of the vehicle. JUMP CLEAR and take leaping strides so that one foot is off the ground at all times until you're at least 5 metres away.

SP Energy Networks will confirm when the power is off so you can be rescued by the Emergency Services.

## Be Aware, Keep Away

- **Never** touch overhead power lines.
- **Always assume power lines are live**, even if they've fallen to the ground, are broken, or aren't sparking.
- **Even if the lines are 'dead', they can become live again with no notice**; this may happen automatically after a few seconds, or they can

be re-energised up to several hours later if we're unaware the line is damaged.

- **Once a line is on the ground you don't even have to touch it to be killed.** The current may travel a large distance through the ground (even further if the line has fallen on a fence or metallic object).

## A clear sign



Look up and look out for power lines. If you see this sign on any equipment keep well clear, it means what it says.

## Further Information

Comprehensive advice is available from the Health and Safety Executive (HSE) via [www.hse.gov.uk/electricity/information/overhead.htm](http://www.hse.gov.uk/electricity/information/overhead.htm)

Before starting work, we also strongly recommend you read the following that are available to download free of charge from the HSE website:

- HSE Guidance Note GS (6) 'Avoiding Danger from Overhead Power Lines'
- For agricultural workers 'HSE Agriculture Information Sheet AIS8'
- The Energy Networks Association produces a range of free safety leaflets available at [www.energynetworks.org/electricity/she/safety/safety-advice/public-safety-leaflets.html](http://www.energynetworks.org/electricity/she/safety/safety-advice/public-safety-leaflets.html)

## Contact Us

We provide free safety advice to help you stay safe near power lines.

For free safety advice and general network enquiries:

- 🌐 [www.spenergynetworks.co.uk](http://www.spenergynetworks.co.uk)
- ✉ [customercare@spenergynetworks.com](mailto:customercare@spenergynetworks.com)
- ☎ 0330 10 10 444

For electricity network plans:

Cheshire, Merseyside, North Wales & North Shropshire

- ☎ 0141 614 5666
- ✉ [requestforplansmanweb@spenergynetworks.co.uk](mailto:requestforplansmanweb@spenergynetworks.co.uk)

Central & Southern Scotland

- ☎ 0141 614 9903
- ✉ [requestforplansscotland@spenergynetworks.co.uk](mailto:requestforplansscotland@spenergynetworks.co.uk)

In an emergency only:

Cheshire, Merseyside, North Wales & North Shropshire

- ☎ 0800 001 5400

Central & Southern Scotland

- ☎ 0800 092 9290



SCP2758 OCT '15

# Safety Matters

When working near overhead power lines



## Introduction

**This leaflet offers safety advice to anyone working close to the overhead power lines which criss-cross the countryside, bringing electricity to us all. Transmission power lines carry electricity at voltage so high that the electricity can 'jump' gaps but even power lines carrying domestic voltage (230 volts) can be fatal.**

**Around five people die each year due to accidental contact with overhead power lines.** The use of agricultural and construction machinery (such as tipper trucks, combine harvesters & boom sprayers) and equipment (such as ladders, scaffolding & irrigation pipes) can often bring workers close to these lines.

### Notes:

- The Health and Safety Executive (HSE) publish detailed guidance for people working near power lines, **HSE Guidance Note GS6 'Avoiding Danger from Overhead Power Lines'**. This can be downloaded free and must be used to help avoid danger when working near power lines.
- Power lines can be damaged in bad weather or, for example, if machinery hits them. But even if they are broken they can still be 'live'.

- SP Energy Networks must be contacted as an emergency if a power line has been hit or damaged so that they can make the line safe. If they aren't aware of an incident they could try to re-energise the power line from a remote control room.
- Most power lines are not insulated.
- Power lines are often supported on wooden poles and are mistaken for telephone wires.
- Look out for the 'Danger of Death' sign on poles and pylons, it means what it says.
- Trees, string, ropes, suspension lines and even water can conduct electricity.
- Rubber boots won't protect you.

## Think Ahead

- Select your machinery and equipment carefully so it can't come into contact with overhead power lines.
- Plan your work so it avoids high risk areas & uses alternative access routes that don't pass under power lines.
- Overhead lines can be difficult to see, particularly at night, or when hidden by trees.
- Take special care when felling or lopping trees.
- Plan carefully when erecting, dismantling and moving equipment such as ladders, scaffolding or agricultural polytunnels. Always carry long objects in a horizontal position.
- Plan storage areas carefully, never stacking anything directly under/near overhead lines.

- In farmyards & on farmland, avoid building up land around overhead power lines as it may compromise safety clearance.
- If you're considering opening up farmland to the public (e.g. for camping), ensure your safety risk assessment includes overhead power lines.
- Keep an eye out for children and visitors on your land.
- Carry a mobile phone if working alone in case you need to call the Emergency Services.
- Ask SP Energy Networks to supply the routes of overhead power lines & voltages running across your land or near its boundaries & mark these on your farm map/plans.

## Measure Your Machinery

Consider the risks from overhead power lines when buying new or used machinery. Find out the maximum height and vertical reach of equipment. Consider the size of both your own machinery and that used by your contractors on your land/site. And please remember:

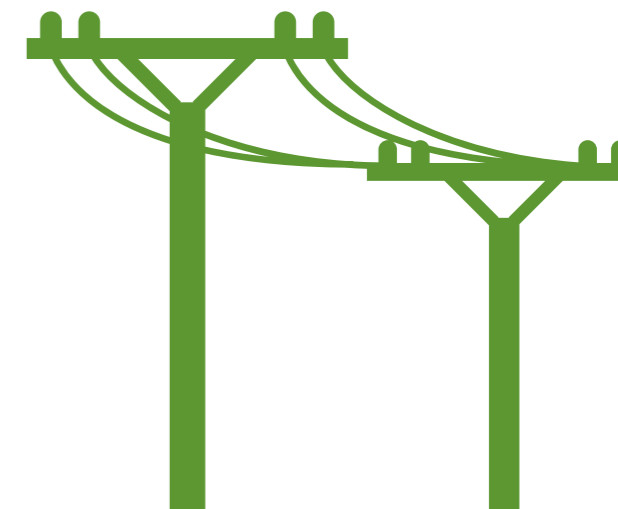
- Overhead lines should be at a minimum clearance from the ground of 5.2 metres (17 feet); however live equipment fitted on poles maybe as low as 4.3 metres (14 feet).
- Raising the bed of a tipper lorry beneath an overhead power line or driving under the power line with the body of the vehicle raised is dangerous.
- Raising or slewing of a crane or excavator jib when operating near overhead power lines is dangerous.

- A jet of water or slurry can cause discharge of electricity and a high risk of fatal or severe injury, so it's not only equipment and machinery that presents a danger.

## Inform & Train People

Make sure staff, contractors and casual workers on your land/site are trained to know:

- What the yellow and black 'Danger of Death' warning sign looks like.
- To identify the location of power lines on the land/site that they are working on.
- To assess the suitability of the machinery and method of working before starting each job, especially when working near power lines.
- That workers who regularly work near power lines should be aware of the electricity local distribution network operator and know how to contact them for plans, safety advice and in emergency.
- How to keep themselves and others safe in an emergency.



## If You Damage an Underground Cable

- If your machine is still in contact with the cable, JUMP CLEAR without touching any part of the machine.
- Call the Emergency Services if anyone is injured.
- Keep others well away and ensure everyone in the working party stays clear.
- Always treat the cable as LIVE even if it's damaged or not sparking – damaged cables can remain 'live' or be re-energised.
- Don't touch any machinery, tools or equipment in contact with the damaged cable.
- Report the damage to SP Energy Networks using the emergency telephone number as soon as possible.

## A clear sign



Look up and look out for this sign. It means what it says.



SCP2759 OCT'15

## Contact Us

We provide free safety advice to help you when you are planning to work near cables.

For free safety advice and general network enquiries:

- [www.spenergynetworks.co.uk](http://www.spenergynetworks.co.uk)
- [customercare@spenergynetworks.com](mailto:customercare@spenergynetworks.com)
- 0330 10 10 444

For electricity network plans:

- |  |  |
|--|--|
| Cheshire, Merseyside, North<br>Wales & North Shropshire  | Central &<br>Southern Scotland   |
| ☎ 0141 614 5666  | ☎ 0141 614 9903  |
| ✉ <a href="mailto:requestforplansmanweb@spenergynetworks.co.uk">requestforplansmanweb@spenergynetworks.co.uk</a> | ✉ <a href="mailto:requestforplansscotland@spenergynetworks.co.uk">requestforplansscotland@spenergynetworks.co.uk</a> |

In an emergency only:

- |   |                                |
|---|--------------------------------|
| Cheshire, Merseyside, North<br>Wales & North Shropshire | Central &<br>Southern Scotland |
| ☎ 0800 001 5400   | ☎ 0800 092 9290                |

## Further Information

Comprehensive advice is available from the Health & Safety Executive (HSE) via [www.hse.gov.uk/electricity/information/excavations.htm](http://www.hse.gov.uk/electricity/information/excavations.htm)

Before starting work, we also strongly recommend you read:

- Health and Safety Executive (HSE) Guidance Note HS (G) 47, 'Avoiding Danger from Underground Services'. This can be downloaded free of charge from the HSE website.
- Energy Networks Association's free leaflets: [www.energynetworks.org/electricity/she/safety/safety-advice/public-safety-leaflets.html](http://www.energynetworks.org/electricity/she/safety/safety-advice/public-safety-leaflets.html)

# Safety Matters

When working near underground cables



  
SP ENERGY  
NETWORKS



## Introduction

**This leaflet aims to help anyone who excavates or penetrates ground to stay safe.**

Over the past 10 years in the UK, there have been over 1,000 recorded injuries as a result of contact with underground electricity cables. Many of these incidents have been on construction or demolition sites, with the remainder on public highways, footpaths, domestic premises and gardens. Damage can result from excavation or penetration of the ground and can cause an explosion, leading to severe burns and even death.

## Important Notes

- Contact us for free cable plans before work starts.
- Houses, shops, offices, factories, street lighting and other street furniture all have underground electric cables or overhead power lines supplying them.
- Underground cables don't run in straight lines; they're flexible and change direction and depth.
- Supply cables associated with derelict buildings should be treated as LIVE until confirmed otherwise by SP Energy Networks.
- Not all cables are shown on plans.
- If a cable is buried in concrete, don't attempt to break it out; contact SP Energy Networks to ensure the cable is de-energised.

- Exercise extreme caution when using picks, forks, pinch bars, pins or any other pointed instruments to free lumps of stone or break up compacted ground.
- Never throw a pick or sharp instrument into the ground.

## Plan Ahead, Look Around

- Carry out a risk assessment in accordance with HSE Guidance Note HS (G) 47, 'Avoiding Danger from Underground Services'.
- Ensure you have up-to-date plans of underground services in the area (we can supply these if you don't have them).
- Include our emergency telephone number on your farm map/site plans and in your list of telephone contacts; then ask your workers to save it in their mobiles.
- Always scan the area you intend to excavate using a Cable Avoidance Tool (CAT) and Genny.
- If emergency work is being carried out and plans aren't readily available, excavate as though there are buried LIVE cables in the vicinity.
- Be aware that the actions of third parties could have altered cable depths or positions since the cables were laid.
- Service connection cables may not be shown on plans, so look for indications of potential services, e.g. street furniture.
- Mark cable positions using waterproof road paint or other permanent marker.

## Excavate Trial Holes With Caution

- Ensure current cable records are on site. We provide them free of charge.
- Use a Cable Avoidance Tool (CAT) and a spade or shovel.
- Never use a pick, fork, pinch bar or power tool.
- Ensure current cable records are on site.
- Ensure staff are fully trained to excavate and use tools appropriately and safely.
- Hand-dig trial holes along the indicated cable route to confirm the position of services.
- Hand-dig as many holes as necessary, particularly if there are plastic pipes which can't always be found by a CAT.
- As you progress, look out for marker tape, ducts or cable covers which indicate the presence of underground services.
- Don't use exposed cables as convenient steps or handholds.
- Don't operate a bulldozer, scraper, dragline or excavator unless you're satisfied that all buried services have been identified in the working area.
- Backfill around services with a fine material; then cover the cable with stone-free soil or stone dust and replace any cable marker tiles, ducts and tape.

 [www.spenergynetworks.co.uk/safety](http://www.spenergynetworks.co.uk/safety)