

- **LUF Holme Lacy Road and Quiet Routes Active Travel Infrastructure schemes- Market Opportunity Information**
- **July 2024**

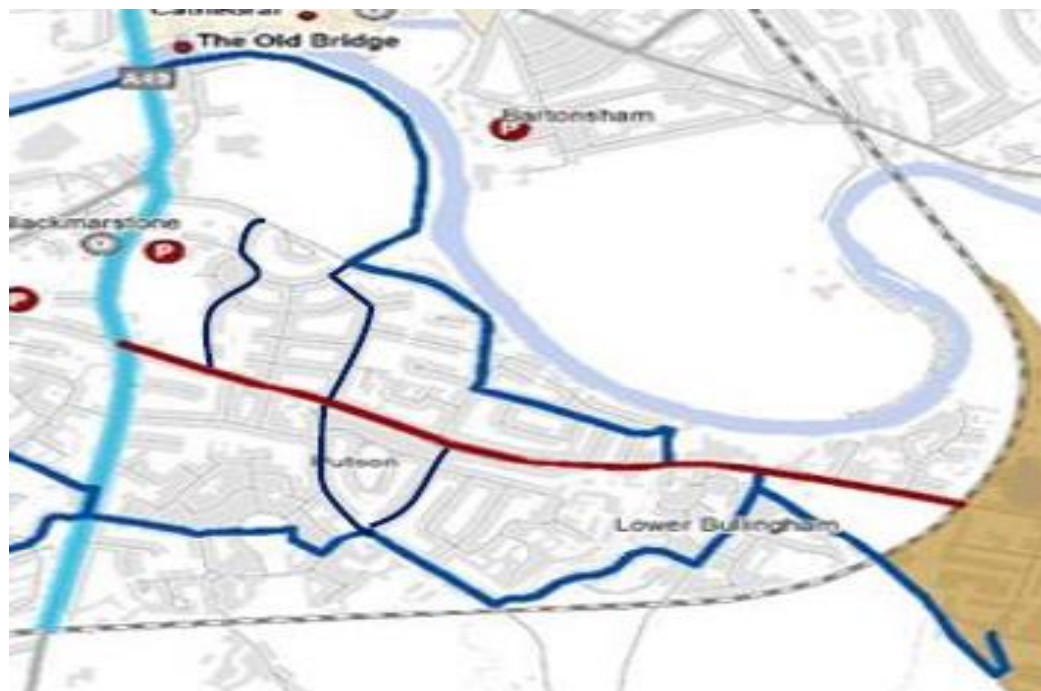
# Information

- This info is for market engagement purposes and does not form part of a procurement process or is not a call for competition.
- Intention is to engage with and inform the market of the Council's requirements, enabling potential contractors to better understand the scope of the requirement and the approach to the procurement process.
- This document neither guarantees that the Council will go on to procure such works/services or accept any proposals offered nor does it oblige the council to pursue any particular route to market.

# Project Overview

- Holme Lacy Road and Quiet Route ATM schemes are designed to improve the existing cycle infrastructure in the south of the City to the latest national guidance published in July 2020.
- Schemes also designed to improve the continuity and connectivity of the existing route along Holme Lacy Road to the Hereford Enterprise Zone (HEZ) from the South Wye Area.
- Objectives of the procurement are to appoint a contractor to complete construction of the Holme Lacy Road and associated Quiet Routes in line with the referenced designs and associated information.
- Projects are part of a wider programme of Active Travel Measure (ATM) schemes accessing Active Travel Funding (ATF) and Levelling Up Funding (LUF) across Hereford City.

# Overview



**Key**

- Points of Interest
- Primary School
- Secondary School
- Further Education
- Other Educational Facility
- Areas of Existing Employment
- Hereford Enterprise Zone
- Hereford City Centre
- National Highways Designated Fund Active Travel Improvements
- Great Western Way Traffic Free Route

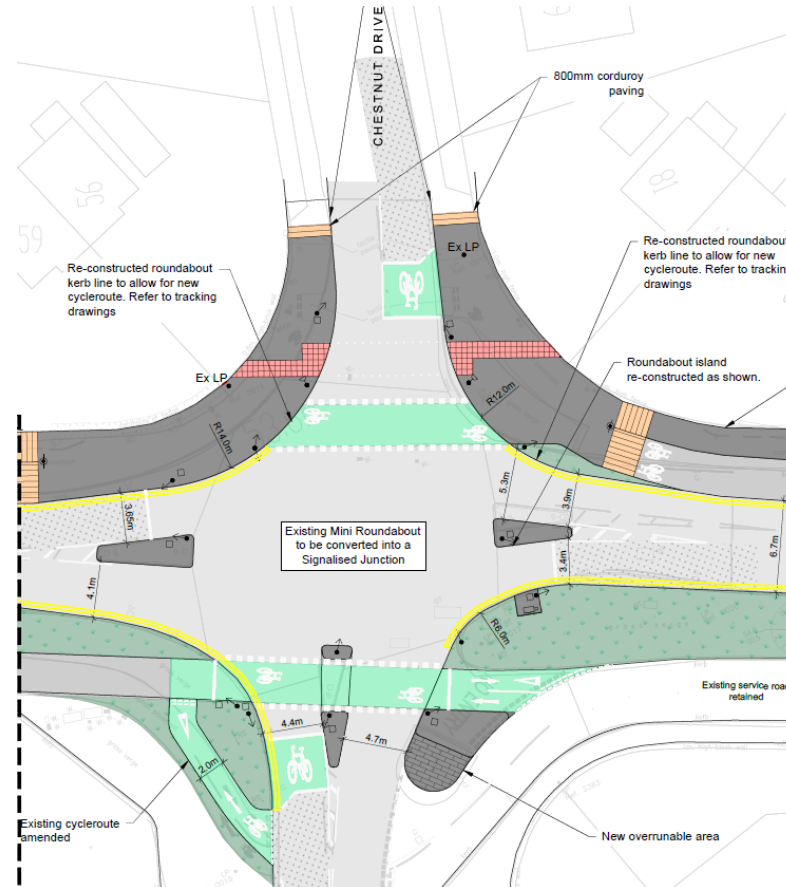
**Project #3 - Active Travel Measures South of the River Wye**

- Holme Lacy Road Active Travel Improvements
- Quiet Routes to Hereford Enterprise Zone

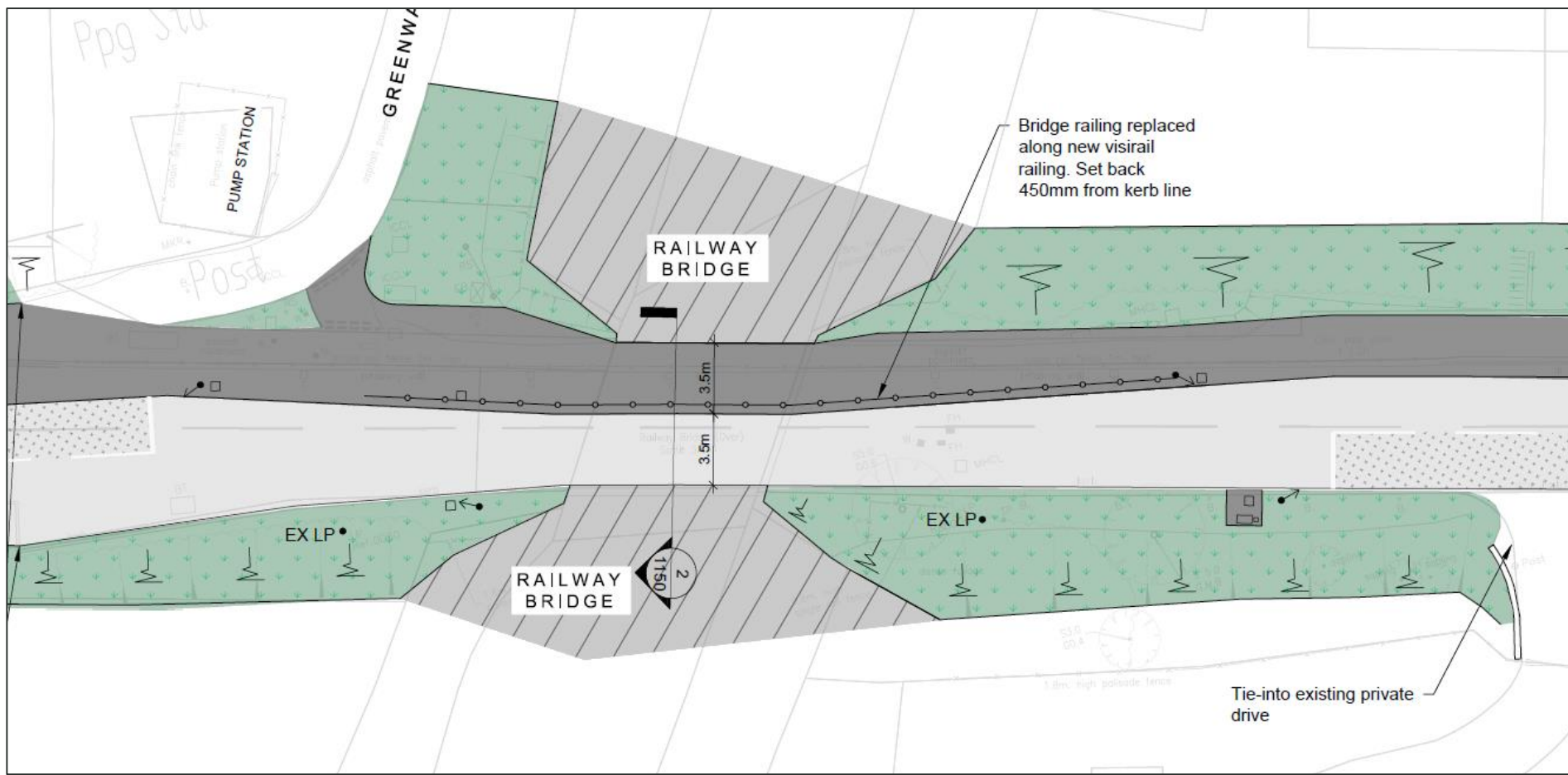
# Key objectives

- Implement active travel infrastructure as per the designated design drawings and associated design detail on Holme Lacy Road and associated Quiet Routes.
- Implement active travel infrastructure by 31 August 2025.
- Implement active travel infrastructure within allocated budgets
  - Estimated- £5.5 million
  - NEC 4 Option C contract to be utilised

# Key works example 1- HLR/Chestnut Drive/Hoarwithy Rd Junction

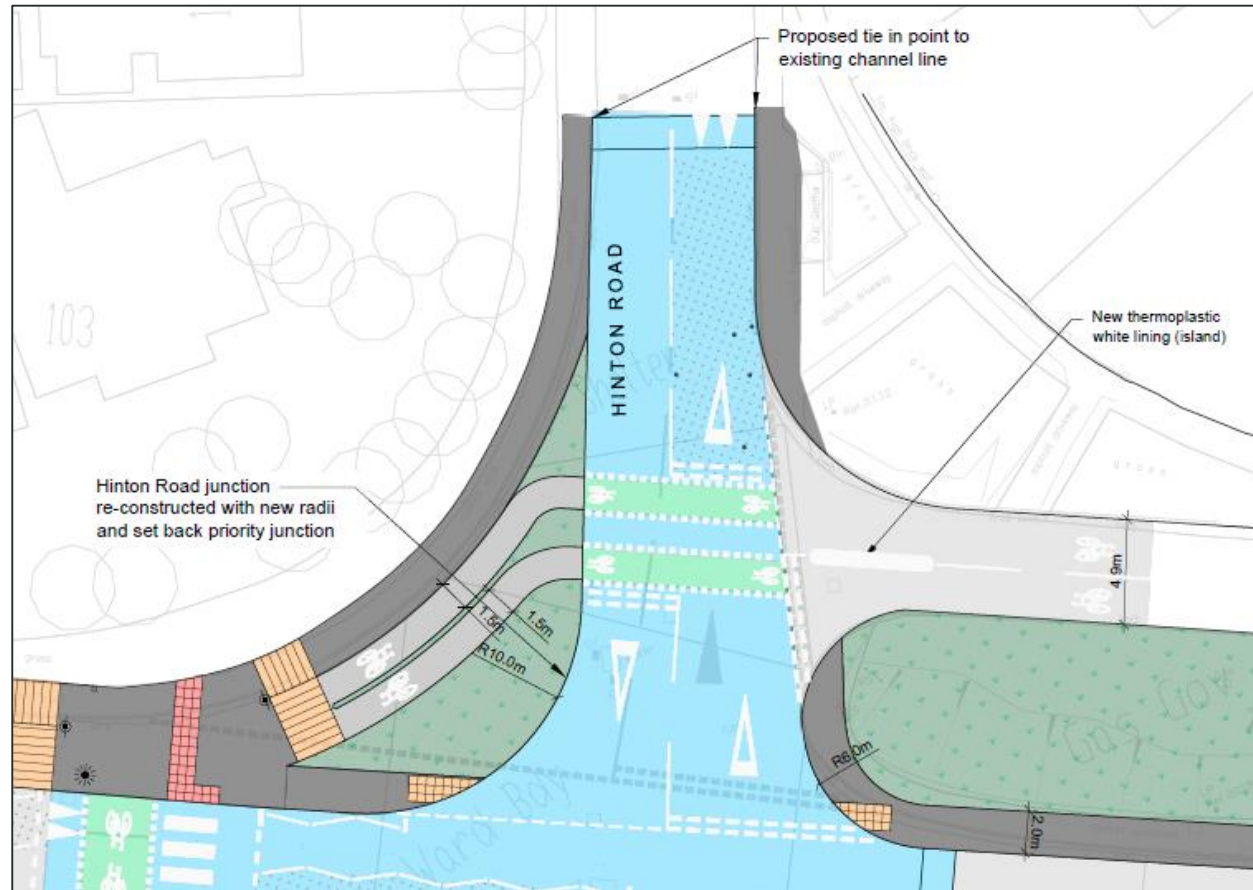


# Key works example 2- HLR Railway Bridge



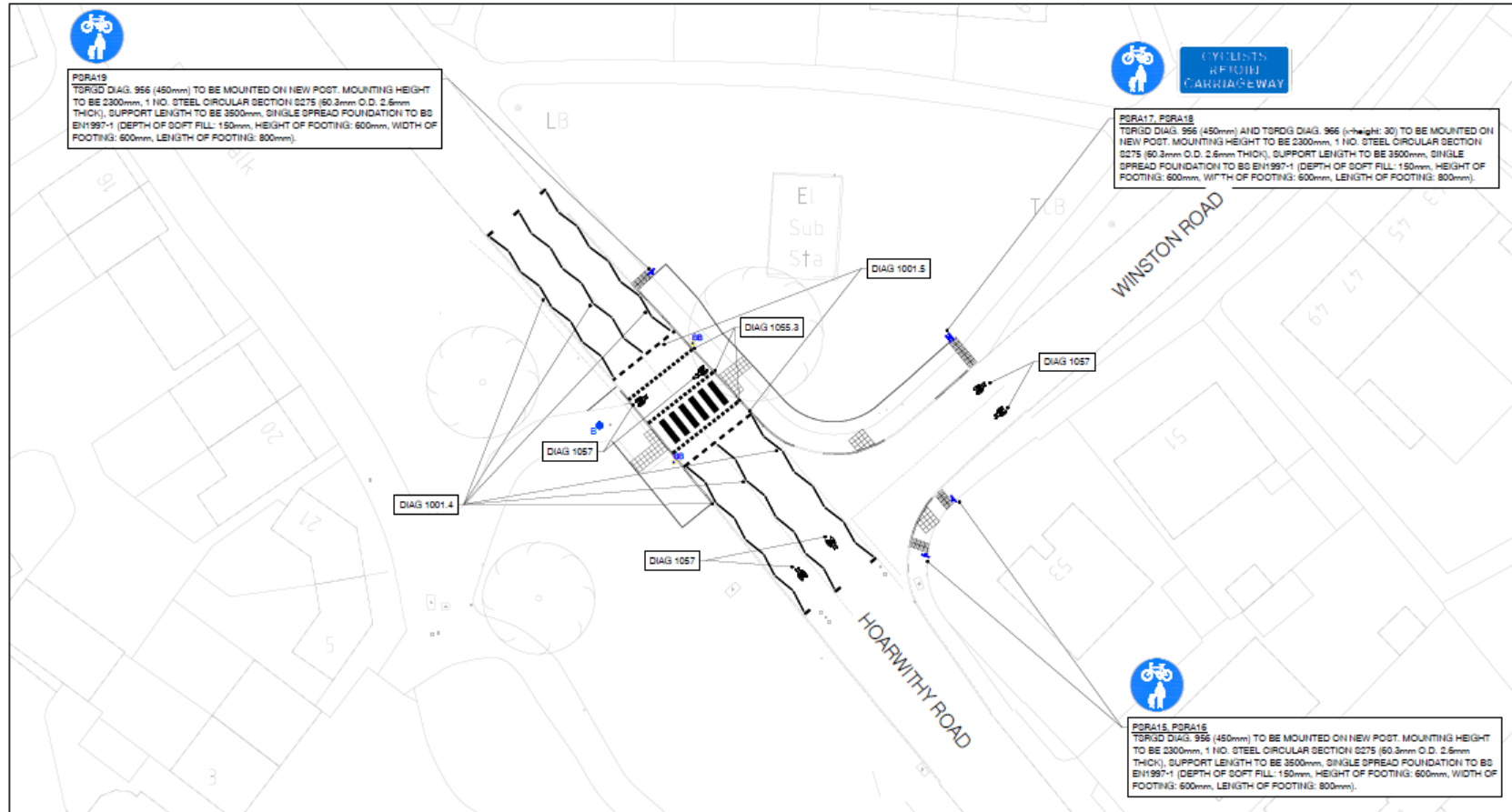


# Key works example 3- HLR/Hinton Rd Junction

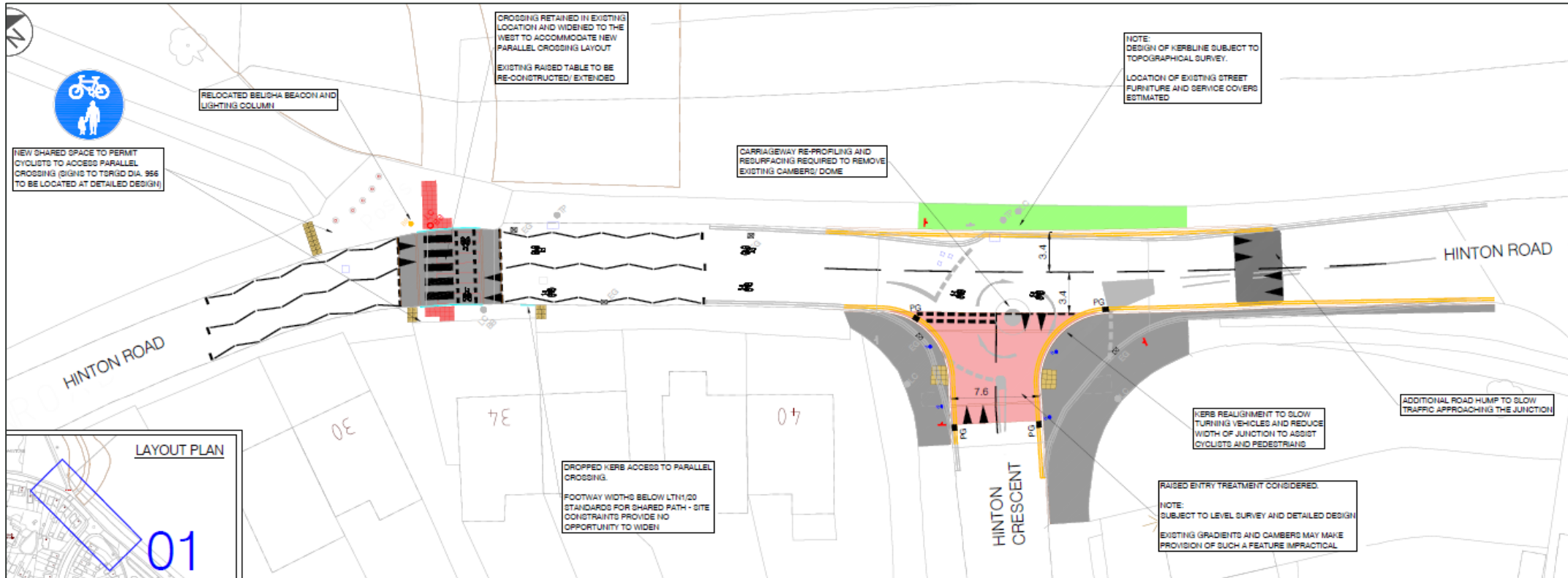




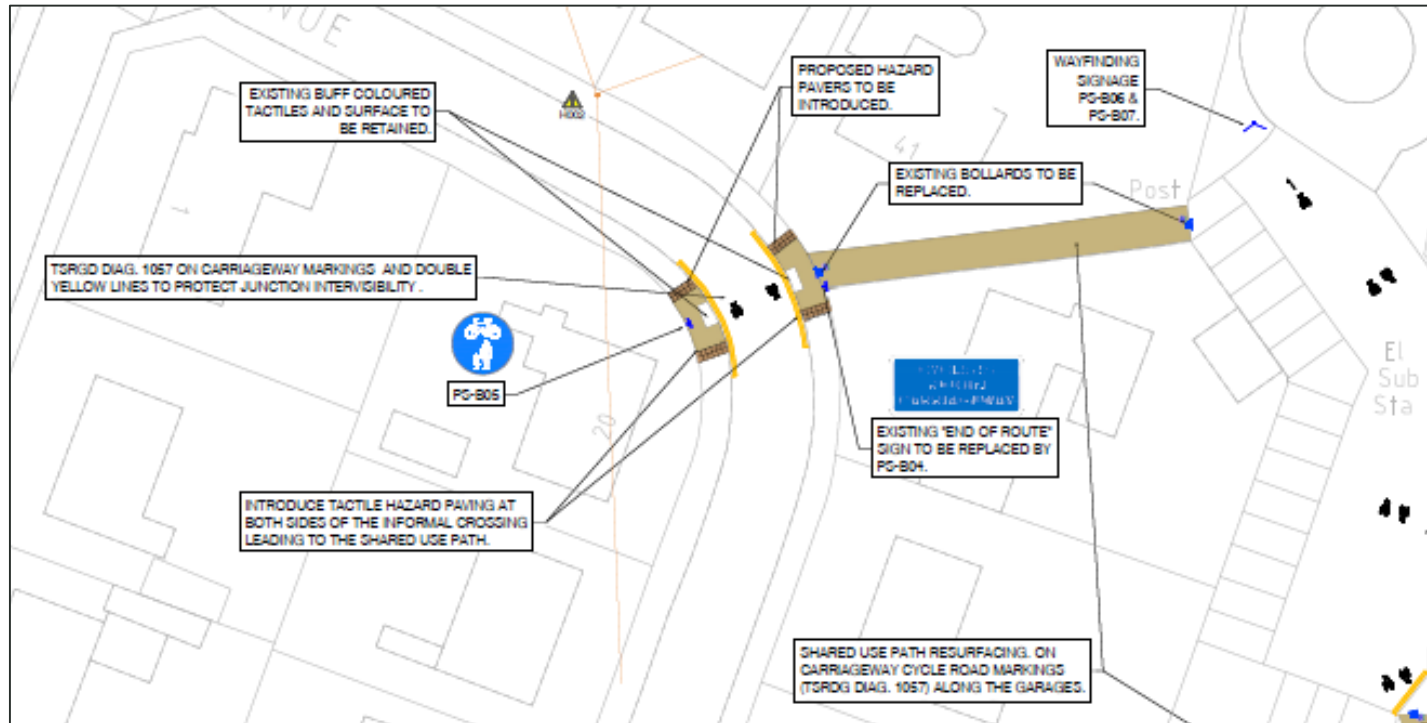
# Key works example 4- Hoarwithy Rd/Winston Rd



# Key works example 5- Hinton Rd mini-roundabout



# Key works example 6- Putson Avenue/River View Jct



# Key Milestones

- Final designs and tender info complete- July/**August** 2024
- Tender/contract award- October/**November** 2024
- Contract commencement- November/**December** 2024
- Works targeted for completion- August 2025

# Constraints

## Site

- Pedestrian and Cyclist access during construction
- Liaison with residents and business
- Traffic management and access to/from A49 and Hereford Enterprise Zone
- TM phasing
- Working Hours
- Network Rail Engagement re: HLR Bridge
- HLR Drainage

## Financial

- Externally funded nature of this project means that any delays or unforeseen increases in budget should be flagged at the earliest opportunity in order to ensure that funding is not put at risk.

# Estimated procurement timelines

- Market engagement- July 2024
- Tender process to commence- July/**August** 2024
- Tender submission deadline- August/**September** 2024
- Evaluation process- September/October 2024
- Contracting/Mobilisation period- October/November 2024
- Contract commencement- November/December 2024

# Feedback

Please let us know if you would be interested in this tender opportunity and/or any barriers you perceive to you tendering for it.

Please submit your feedback through Pro-Contract messages function by 5pm on 25<sup>th</sup> July 2024.