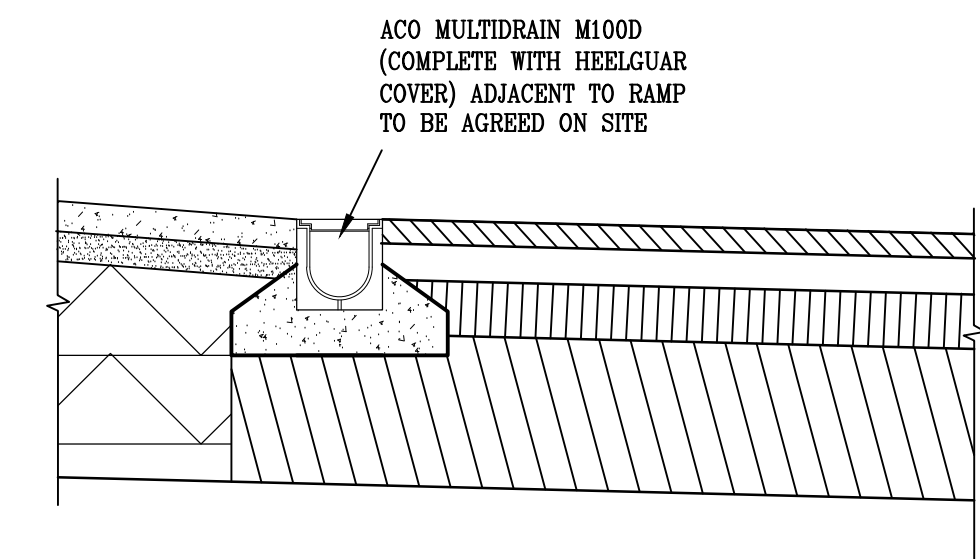


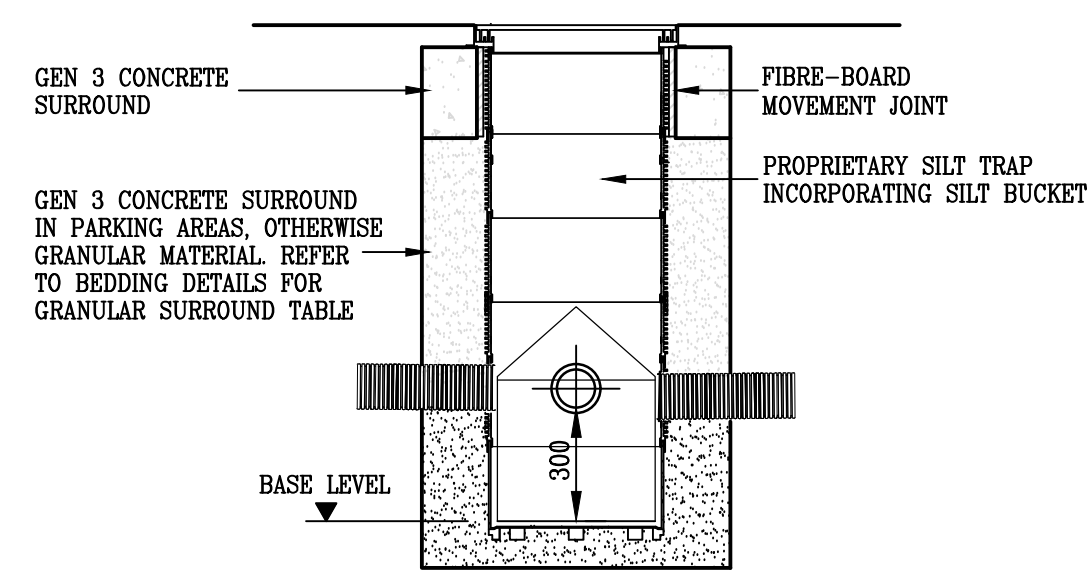
**TYPICAL PRIVATE INSPECTION CHAMBER**  
MAX. DEPTH 3000mm COVER TO INVERT

EXCAVATIONS FOR ALL PIPE RUNS IN EXCESS OF 1.2m DEEP ARE TO BE ADEQUATELY BOARDED AND STRUTTED BY MAIN CONTRACTOR.

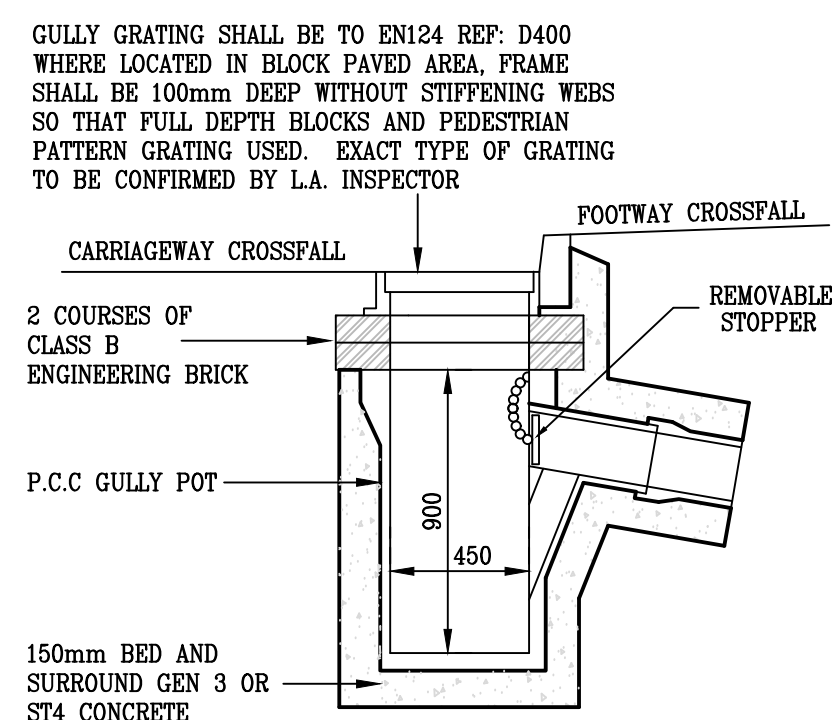
COVERS AND FRAMES	
D400 DUCTILE IRON	MANHOLE COVERS AND FRAMES WITHIN ACCESS ROAD TO BE TO BS EN 124 REF. D400 AND DUCTILE IRON WITH A CLEAR OPENING 800 x 600mm MIN. ALL IRONWORK SHALL BE KITEMARKED. COVERS SHALL BE DOUBLE TRIANGLE FOR 600mm SQUARE OPENINGS AND BE PROVIDED WITH LOOSE BOLTED CONNECTIONS
CLASS B125	COVER & FRAME IN AREAS NOT SUBJECT TO EMERGENCY VEHICLE LOADS
CLASS B15	ACCESS COVERS & GRATINGS CAPABLE OF WITHSTANDING A 1.5 TONNES TEST LOAD. FOR USE IN AREAS WHERE ONLY PEDESTRIANS HAVE ACCESS



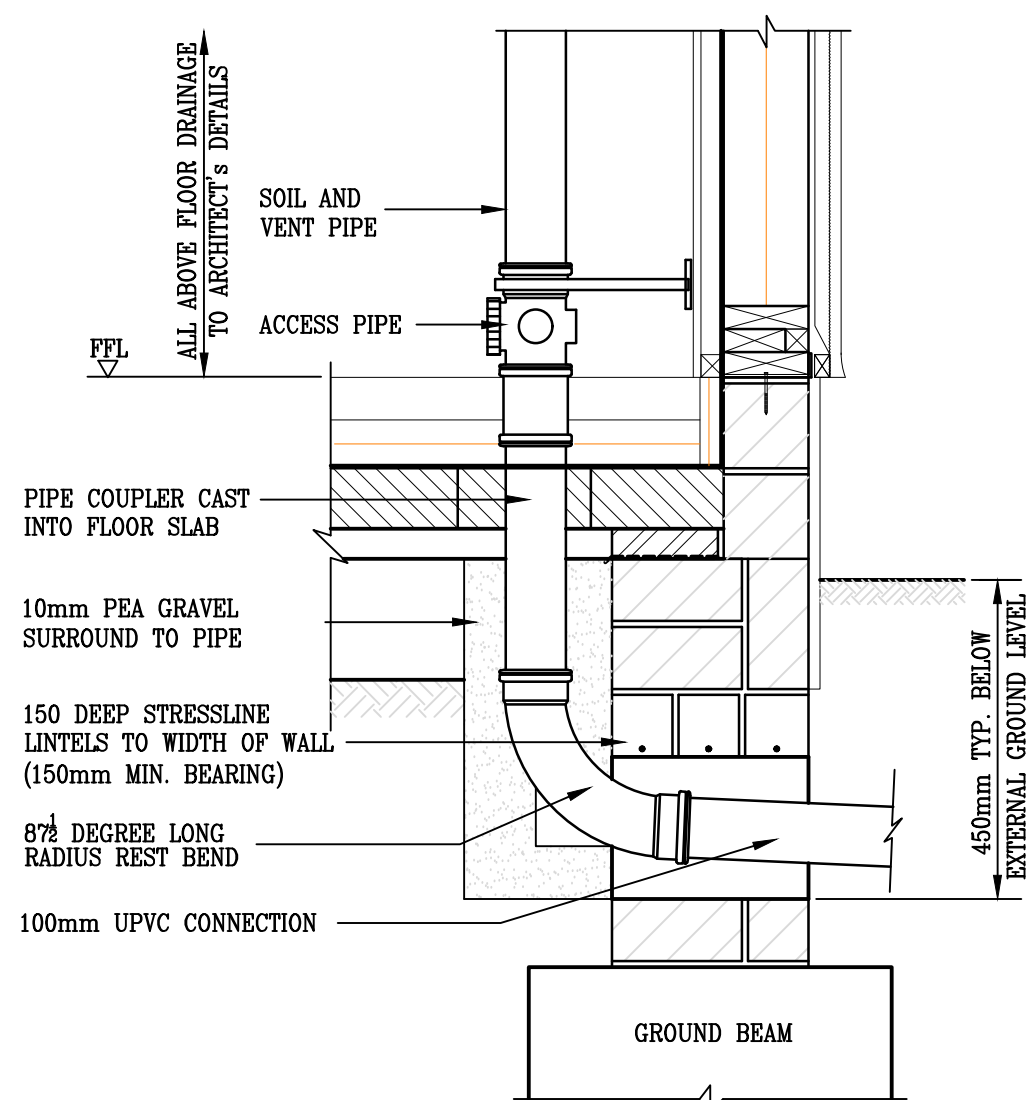
**TYPICAL ACO DRAIN DETAIL**



**PROPRIETARY SILT PIT**

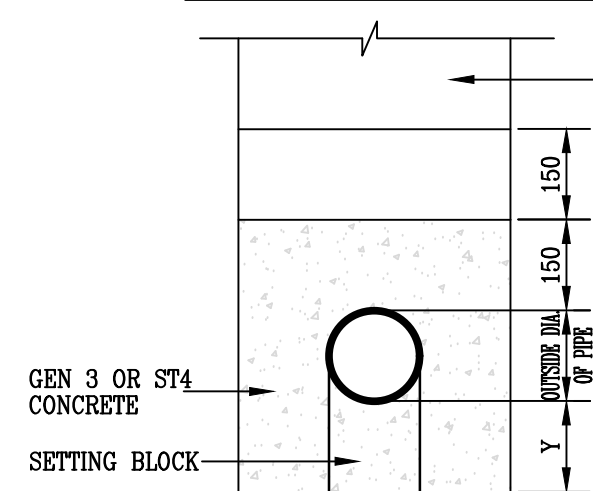


**TYPICAL GULLY**



**TYPICAL SOIL AND VENT PIPE DETAIL OVER GROUND BEAM**

**CONCRETE SURROUND**



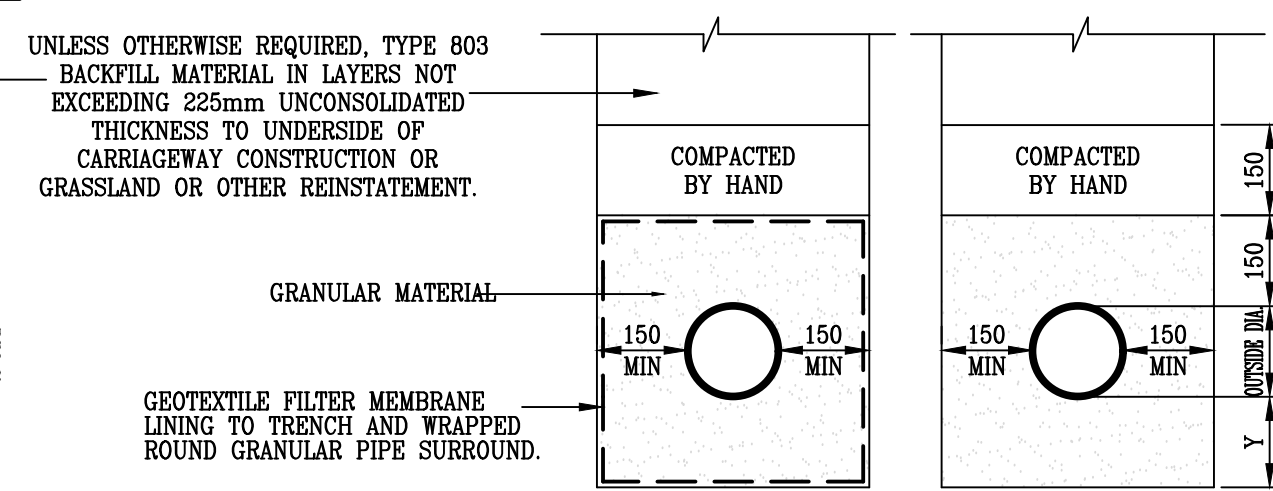
Nominal bore of pipe	Thickness of compressible filler
Less than 450mm	18mm
450 - 1200mm	36mm
Exceeding 1200mm	54mm

- COMPRESSIBLE FILLER FOR INTERRUPTING CONCRETE PROTECTION TO PIPELINES SHALL BE BITUMEN IMPREGNATED INSULATING BOARD TO BS 1142: PART 3.
- CONCRETE SURROUND SHALL BE INTERRUPTED OVER IT'S FULL CROSS-SECTION AT A PIPE JOINT AT INTERVALS NOT EXCEEDING 8m IN STABLE GROUND, OR AT EVERY PIPE JOINT IN GROUND LIABLE TO MOVEMENT.
- CONCRETE SETTING BLOCKS USED TO SUPPORT PIPES PRIOR TO POURING CONCRETE SURROUND SHALL BE OF GEN 3 OR ST4 CONCRETE AND THE TOP FACE OF EACH BLOCK SHALL BE COVERED WITH 2 LAYERS OF COMPRESSIBLE PACKING.

**CLASS A BEDDING**

NOT EXCEEDING 0.6m DEEP - GARDEN & PRIVATE FOOTPATHS  
NOT EXCEEDING 1.2m DEEP - ROAD & PARKING AREAS

**GRANULAR SURROUND**



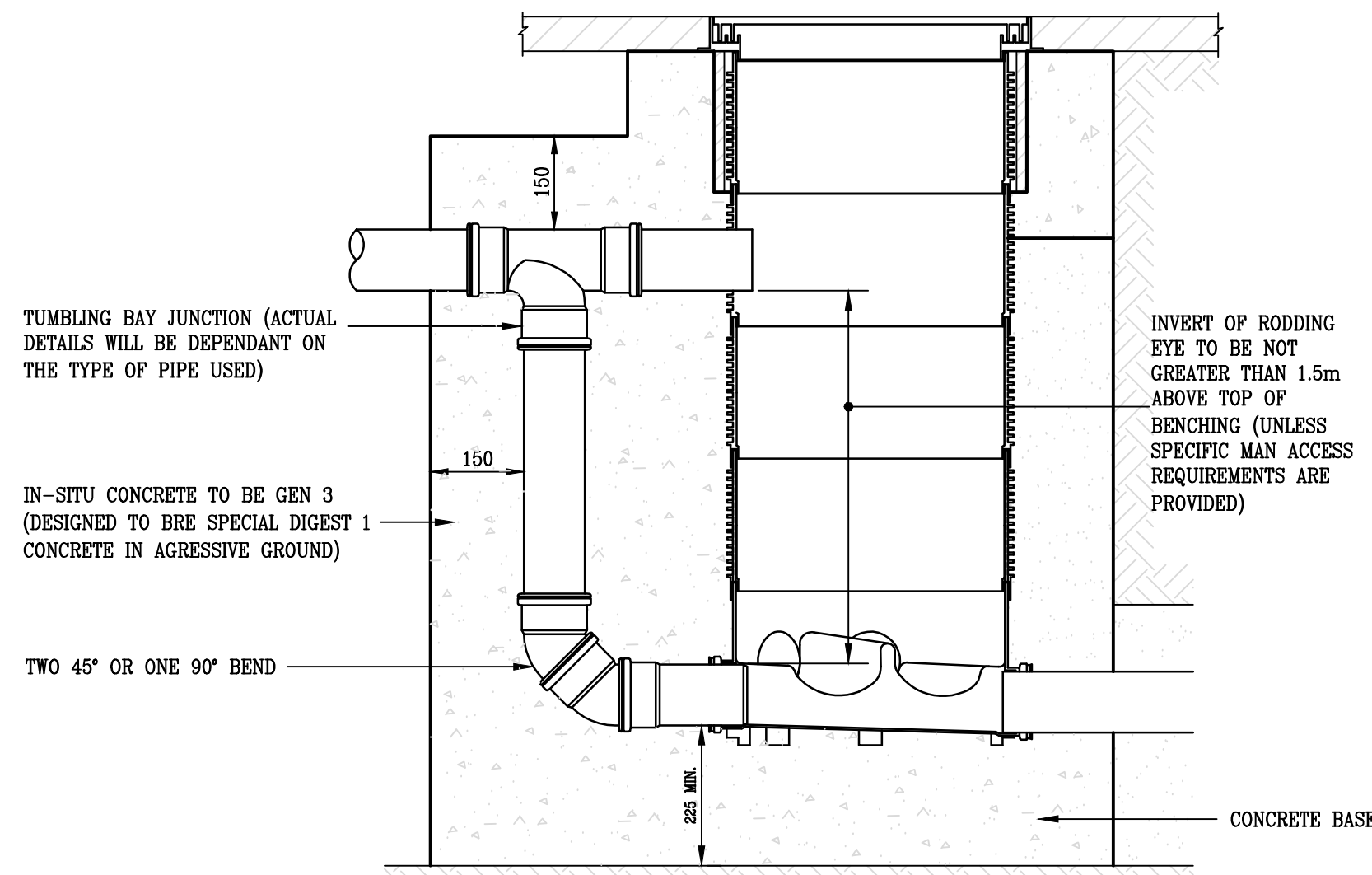
Nominal bore of pipe	Granular Bedding	
	Single Size	Graded
100mm	10mm	-
>100-150mm	10 or 14	14 TO 5
>150-300mm	10, 14 or 20mm	14 TO 5 or 20 TO 5
>300-550mm	14 or 20mm	14 TO 5 or 20 TO 5
>550mm	40mm	14 TO 5 or 20 TO 5 or 40 TO 5

- AIR-COOLED BLAST FURNACE SLAG OR SINTERED PFA SHALL NOT BE USED WITH DUCTILE IRON OR STEEL PIPES.
- THE SULPHATE CONTENT OF GRANULAR SURROUND FOR USE WITH CEMENTITIOUS PIPES SHALL NOT EXCEED 0.3% AS SULPHUR TRIOXIDE.
- FOR RIGID PIPES GREATER THAN 500mm NOMINAL BORE THE GRANULAR SURROUND SHALL BE ANGULAR AIR-COOLED BLAST FURNACE SLAG OR CRUSHED ROCK.

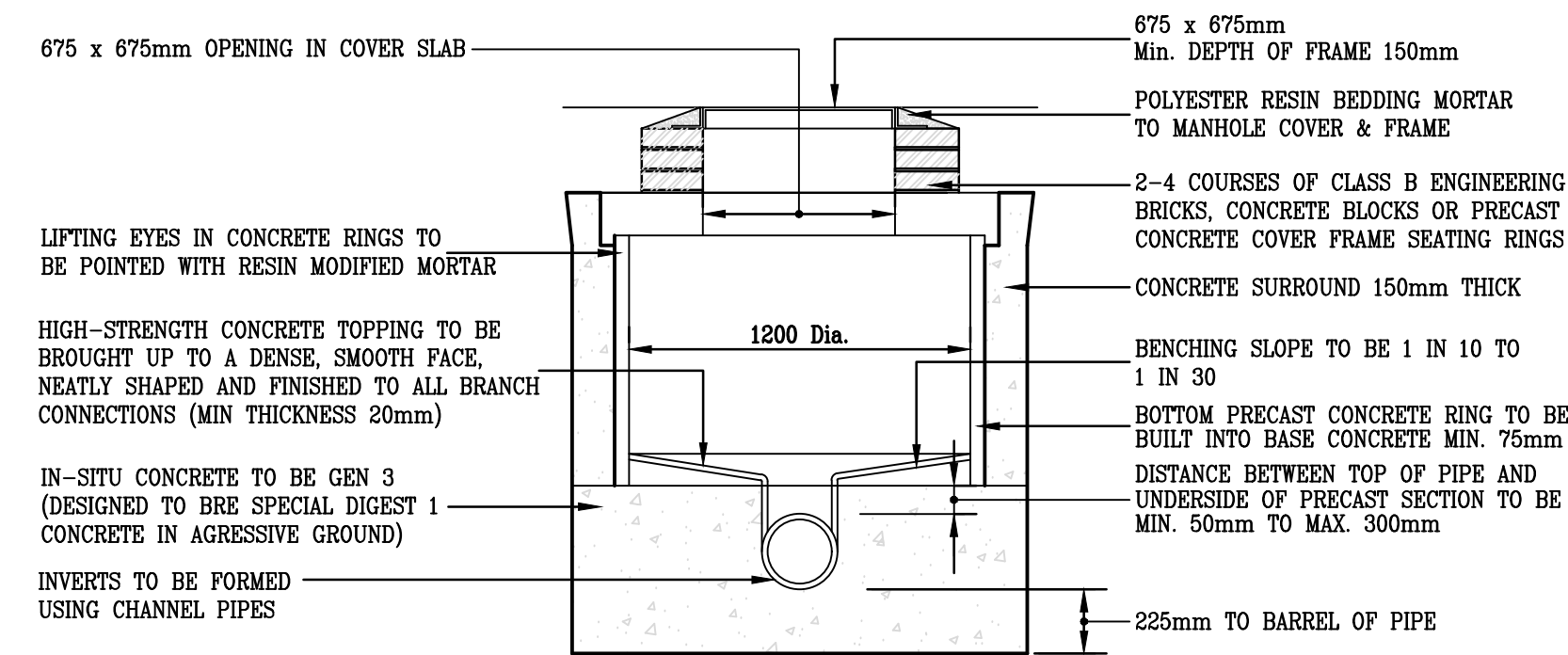
**CLASS S BEDDING**

EXCEEDING 1.2m DEEP - ROAD & PARKING AREAS  
EXCEEDING 0.6m DEEP - GARDEN & PRIVATE FOOTPATHS

**PIPE - BEDDING DETAILS**



**EXTERNAL VERTICAL BACKDROP DETAIL**



**TYPICAL MANHOLE DETAIL - TYPE E**  
DEPTH FROM COVER LEVEL TO SOFFIT OF PIPE 1.0m TO 1.5m

THIS DRAWING IS COPYRIGHT  
CONTRACTORS MUST CHECK  
ALL DIMENSIONS ON SITE  
ONLY FIGURED DIMENSIONS  
ARE TO BE WORKED FROM.  
DISCREPANCIES MUST BE  
REPORTED IMMEDIATELY TO  
THE ENGINEER BEFORE  
PROCEEDING

Notes:

Rev.	Date	Details	Initials
Revisions			

This drawing is copyright  
Contractors must check all dimensions on site. Only figured  
dimensions are to be worked from. Discrepancies must be  
reported immediately before proceeding

TDA  
TOR HILL HOUSE  
TORQUAY, TQ2 5QW TEL: 01803 207948  
enquiries@tda.uk.net www.tda.uk.net



**TENDER**

Client	<b>TORBAY COUNCIL</b>	Date of issue	23 FEB 2024
Project	PAIGNTON ACADEMY NEW SEND BUILDING	Scale	AS NOTED Swp A1
Drawing No.	3926.ENG.11	Drawn	AJW
Sheet No.	T1	Rev.	

This drawing is the copyright of TDA and must not be used or reproduced without permission.  
Registered in England & Wales Registration No. 7004855.  
Registered Office: Tor Hill House, Union Street, Torquay TQ2 5QW.