

ROMAN BATHS
SHOP ALTERATIONS
TENDER DRAWINGS

CONTENT

MAIN SHOP

PUMP ROOM FLOOR PLAN – Drawing – RB PR – RETAIL FP 001 rev 2
CHILDRENS PICKBIN – Drawing – RB PR – PICKBIN 001 rev 2
CHILDRENS PICKBIN ACRYLICS – Drawing – RB PR – ACRYLIC LAYOUT 002 rev 2
DVD DISPLAY WALL ELEVATION – Drawing – RB PR DVD WALL BAY 003 rev 2
DVD UNIT – Drawings RB PB – DVD ELE 004 rev 2
GREETING CARD HOLDERS – Drawings – RB PR GREETING C ELE 005 rev 2
JEWELLERY CABINET – Drawing – RB PR JEWEL 006 rev 2
JEWELLERY CABINET SUPPORT IMAGE

LOWER SHOP

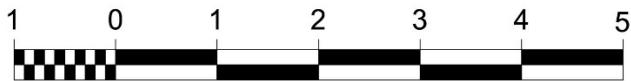
DESK ELEVATION – Drawing – PR PR LOWER MS C 007 rev 2
LOWER SHOP SUPPORT IMAGE

THE ROMAN BATHS BATH

ROMAN BATHS

Pump Room

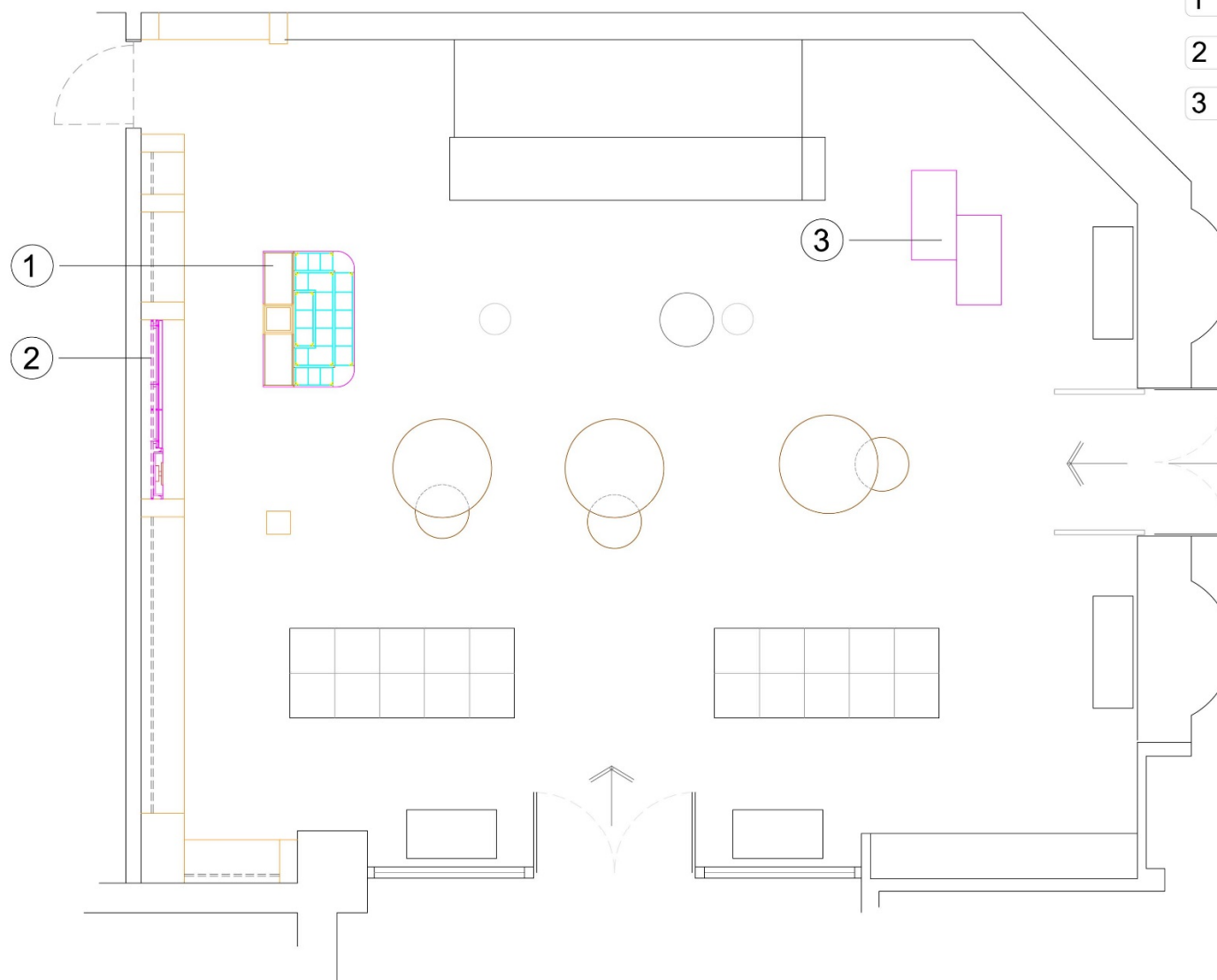
Main Shop Drawings



Scale

Key

- 1 New Children's Pickbin
- 2 New DVD Display Area
- 3 New Jewellery Cabinet



GENERAL NOTES

All dimensions for manufacture
will need to be checked on site

Dwg No.

R B PR - RETAIL FP 001

Page:3

Date: OCT 2015

REVISION

2

SCALE

1:50 @ A3

Dwg TITLE

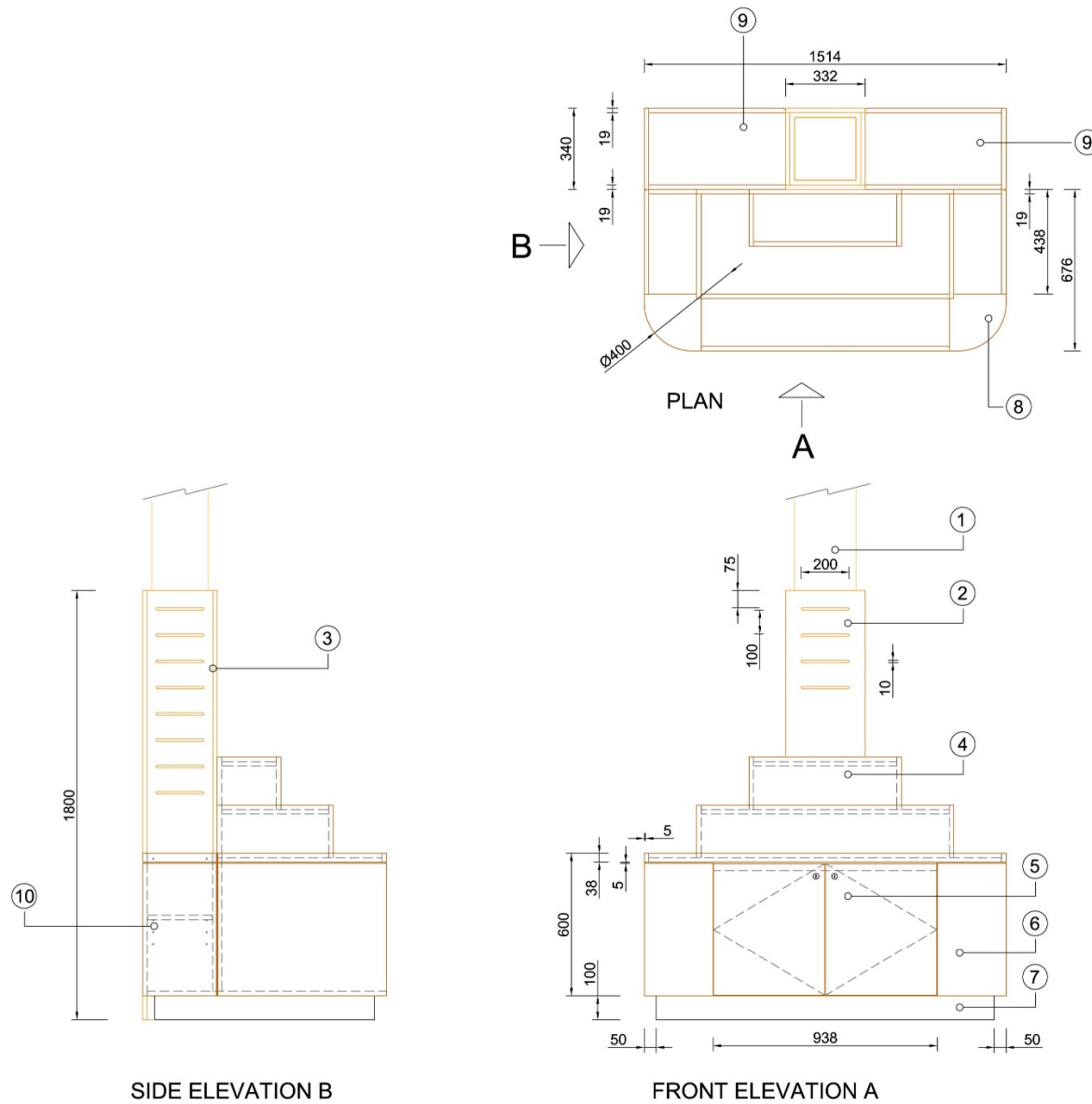
ROMAN BATHS - pump Room
Retail floor plan - ALTERATIONS


PROJECT

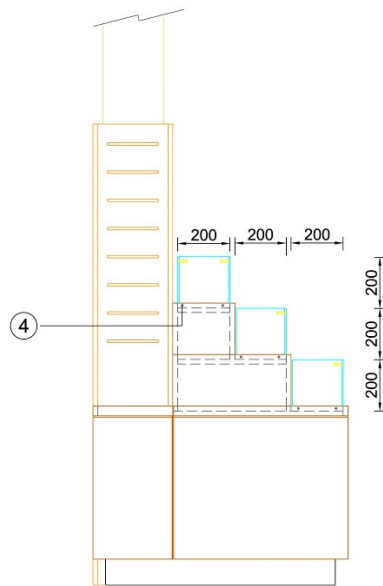
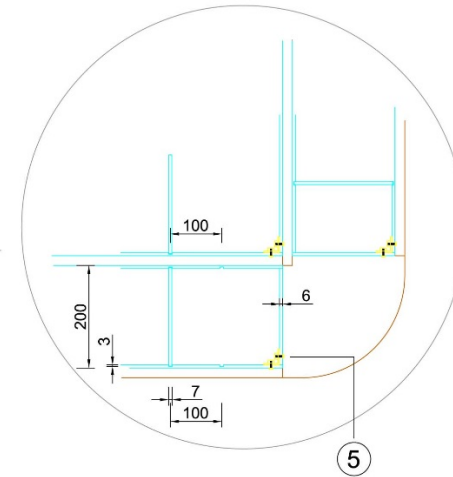
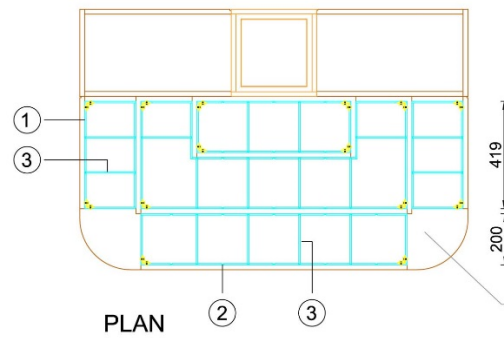
RETAIL ALTERATIONS

CLIENT

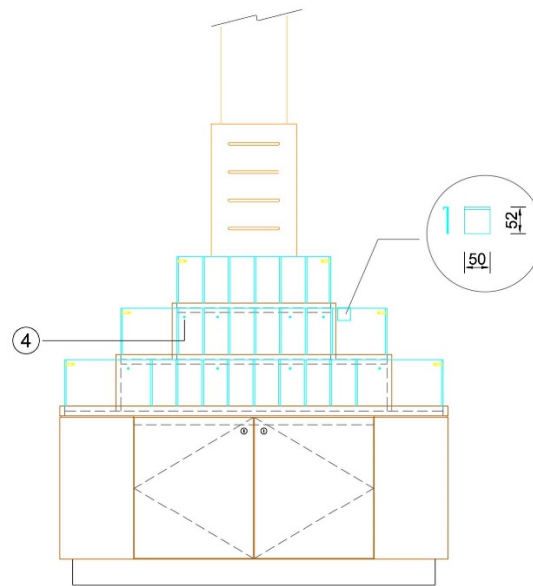




GENERAL NOTES	Dwg No.	REVISION	SCALE	Dwg TITLE	PROJECT	CLIENT
All dimensions for manufacture will need to be checked on site	R B PR - PICKBIN 001	2	NTS	ROMAN BATHS - pump Room CHILDREN'S PICKBIN	RETAIL ALTERATIONS	
	Page:3 Date: OCT 2015					



SIDE ELEVATION B



FRONT ELEVATION A

Key

- 1 6mm clear acrylic with polished edges
- 2 (7x3)mm grooves for adjusting the size of each pigeon hole
- 3 X15 No. 6mm clear acrylic dividers with polished edges
- 4 Counter sunk holes for screwing acrylics to base and backs
- 5 Chrome finish frameless panel connectors
- 6 Chrome finish frameless panel connectors
- 7 X30 No. 1mm PVC ticket holder to hook over 6mm acrylic

GENERAL NOTES

All dimensions for manufacture
will need to be checked on site

Dwg No.

R B PB - ACRYLIC LAYOUT 002

Page:3

Date: OCT 2015

REVISION

2

SCALE

NTS

Dwg TITLE

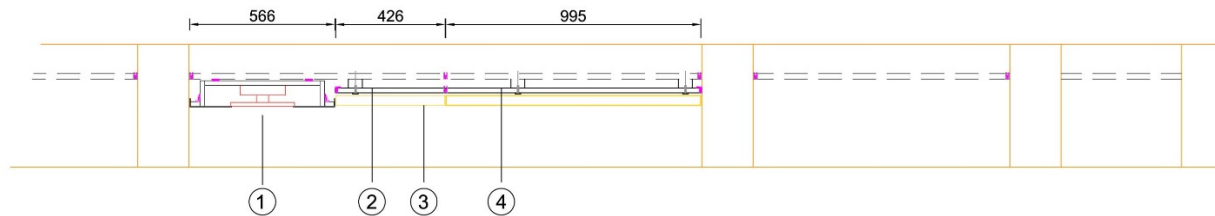
ROMAN BATHS - pump Room
CHILDREN'S PICKBIN ACRYLIC LAYOUT

PROJECT

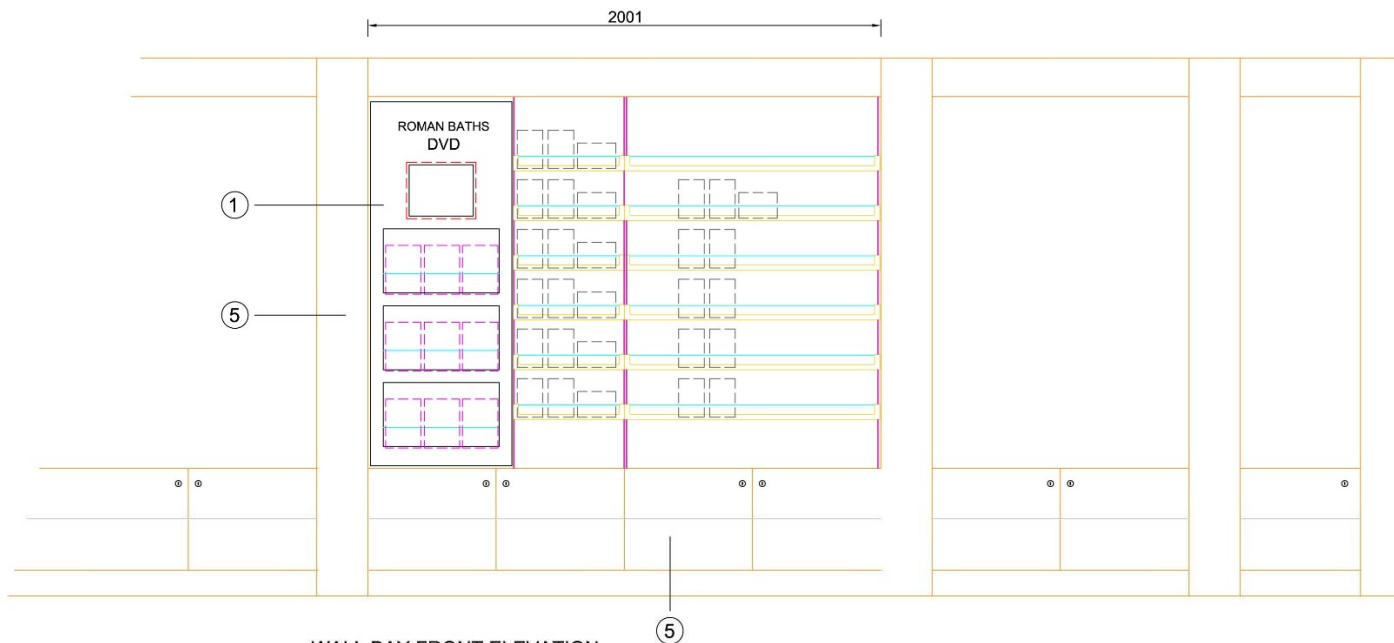
RETAIL ALTERATIONS

CLIENT





WALL BAY PLAN



WALL BAY FRONT ELEVATION

Key

- 1 New DVD display with tablet, (by others), and facility to display merchandise. See drawing: RB PR - DVD ELE 004 rev 2. for details.
- 2 New sprayed white back panels with Peerless single and double slot uprights recessed into panels. Uprights powder coated white
- 3 X6 No. new steel greeting card holders to match existing. See drawing: RB PR - GREETING C ELE 005 rev 2
- 4 Existing greeting card holders, to fit into new back panels
- 5 Existing wall units

GENERAL NOTES

All dimensions for manufacture will need to be checked on site

Dwg No.

R B PR - DVD WALL BAY 003

Page:3

Date: OCT 2015

REVISION

2

SCALE

NTS

Dwg TITLE

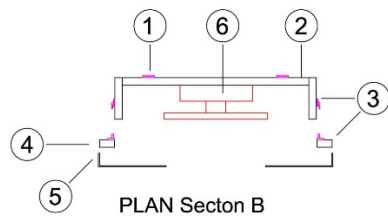
ROMAN BATHS - Pump Room
DVD WALL ELEVATION

PROJECT

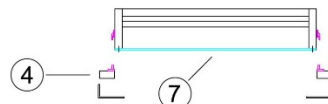
RETAIL ALTERATIONS

CLIENT

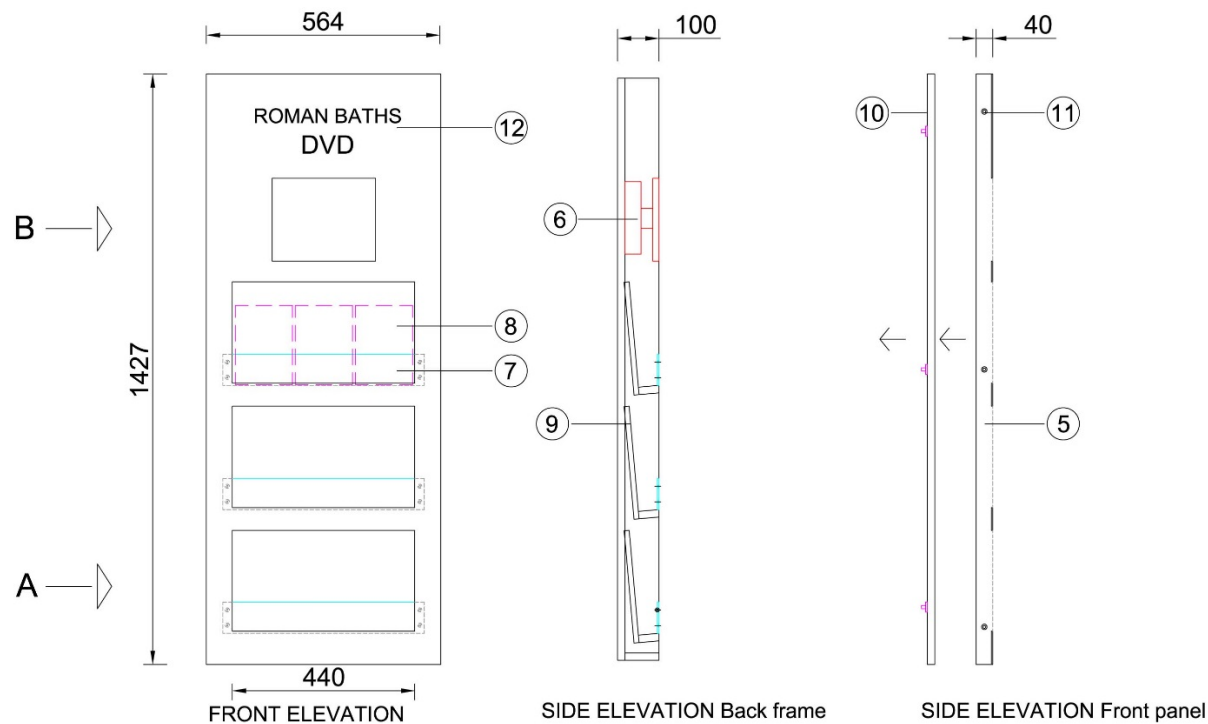




PLAN Section B



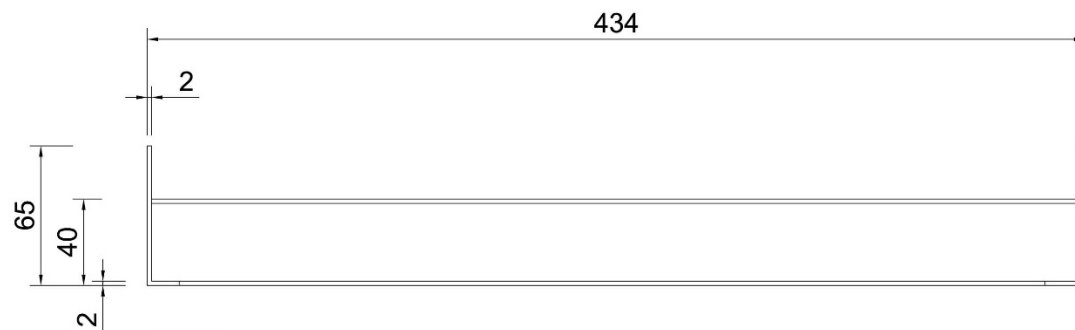
PLAN Section A



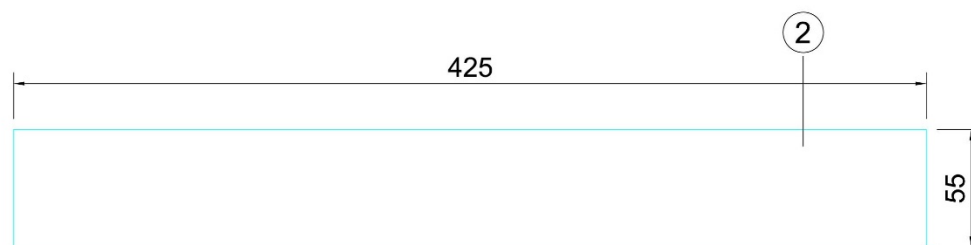
Key

- 1 Flush mount zinc plated hanging brackets
- 2 18mm MDF back frame sprayed white (colour TBC)
- 3 Front frame hung onto MDF back frame with Keku clips
- 4 18mm MDF frame onto which steel front panel to be bonded and fixed
- 5 2mm laser cut steel front panel powder coated white (colour TBC)
- 6 Tablet for displaying DVD. Spec TBC (current size based on IPAD. Equipment to be supplied by others. Allowance required for channels to house tablet.)
- 7 3mm clear acrylic riser, screwed into MDF back frame
- 8 X9 facings of DVD's
- 9 X3 sloping shelves, 18mm MDF sprayed white
- 10 18mm MDF front panel with Keku clips
- 11 Counter sunk holes for M6 bolts
- 12 Any graphics by others

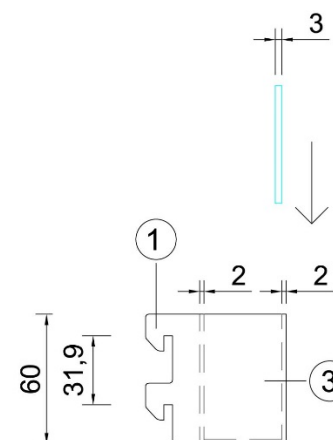
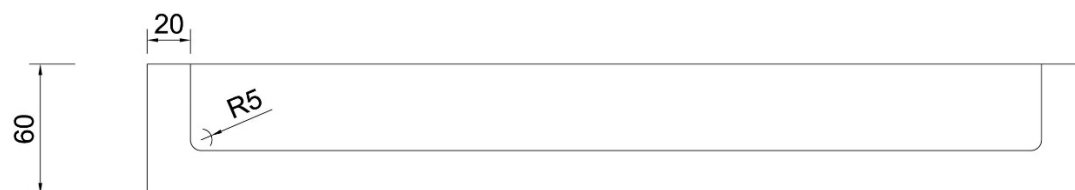
GENERAL NOTES	Dwg No.	REVISION	SCALE	Dwg TITLE	PROJECT	CLIENT
All dimensions for manufacture will need to be checked on site	R B PB - DVD ELE 004	2	NTS	ROMAN BATHS - pump Room DVD Display and merchandiser elevations	RETAIL ALTERATIONS	THE ROMAN BATHS BATH
	Page:3 Date: OCT 2015					




PLAN



FRONT ELEVATION



- Key**
- 1 Hooks to sit into slot uprights
 - 2 3mm clear acrylic polished all around
 - 3 2mm mild steel powder coated yellow (colour TBC)
- Quantity - 6 off

GENERAL NOTES	Dwg No.	REVISION	SCALE	Dwg TITLE	PROJECT	CLIENT
All dimensions for manufacture will need to be checked on site	R B PR - GREETING C ELE 005	2	NTS	ROMAN BATHS - Pump Room Greeting card holder	RETAIL ALTERATIONS	
	Page:3 Date: OCT 2015					

PUMP ROOM – SHOP – Jewellery Cabinet – New cabinet to replace existing

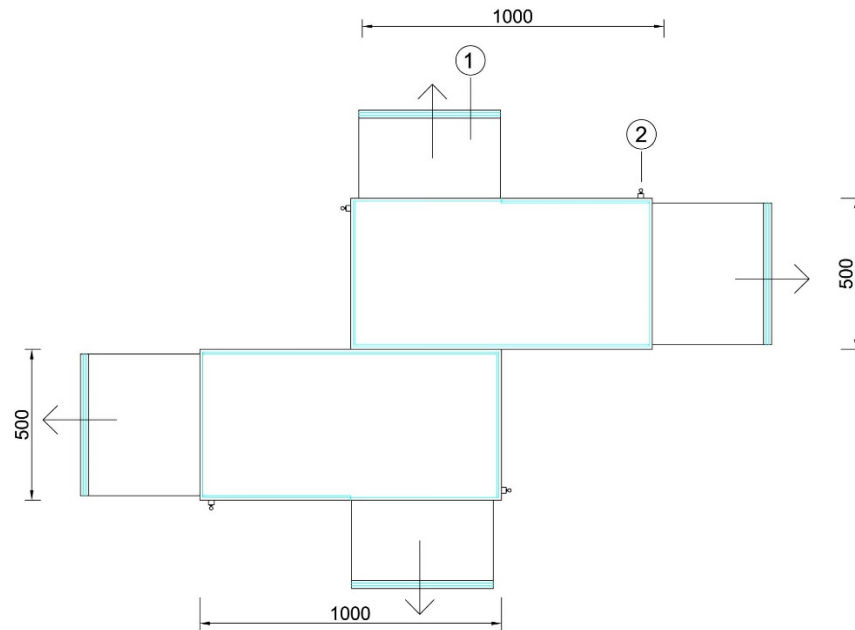


Under new
drawers introduce
opening for
storage pad for
displaying
jewellery

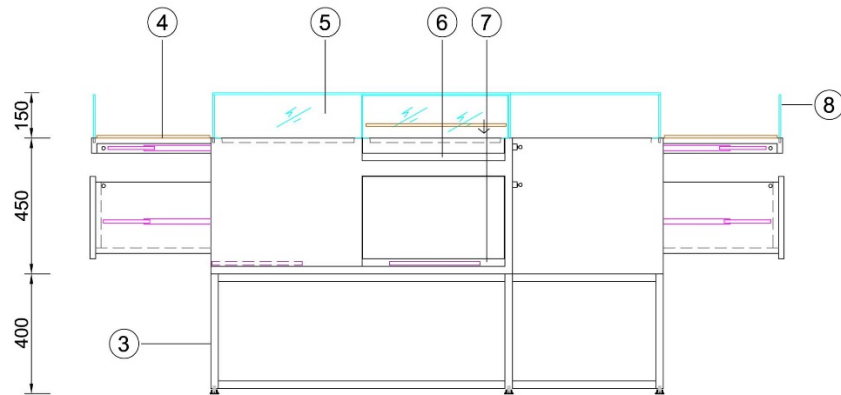
12mm MDF to be
covered with free issue
fabric

Introduce additional
drawers for storage

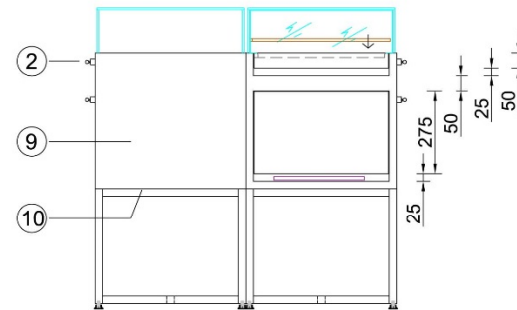
Introduce additional
steel x rail for additional
stability



PLAN



FRONT ELEVATION



SIDE ELEVATION

Key

- 1 X4 pull out display drawers with front glass set into MDF fascia panel
- 2 Lockable drawers on plunge locks. All locks to be suited
- 3 1" steel base frame with adjustable glide feet. Note - x rail for additional stability. Powder coated RAL 080 40 05
- 4 12mm MDF pads to be clad in free issue fabric
- 5 6mm bonded glass
- 6 25mm opening to open drawer
- 7 25mm opening to store pad for displaying jewellery
- 8 6mm toughened glass drawer front set into MDF fascia panel
- 9 MDF construction sprayed RAL 080 40 05
- 10 metal base to be bolted to MDF carcass

GENERAL NOTES

All dimensions for manufacture will need to be checked on site

Dwg No.

R B PB - JEWEL 006

Page:3

Date: OCT 2015

REVISION

2

SCALE

NTS

Dwg TITLE

ROMAN BATHS - pump Room
JEWELLERY CABINET

PROJECT

RETAIL ALTERATIONS

CLIENT

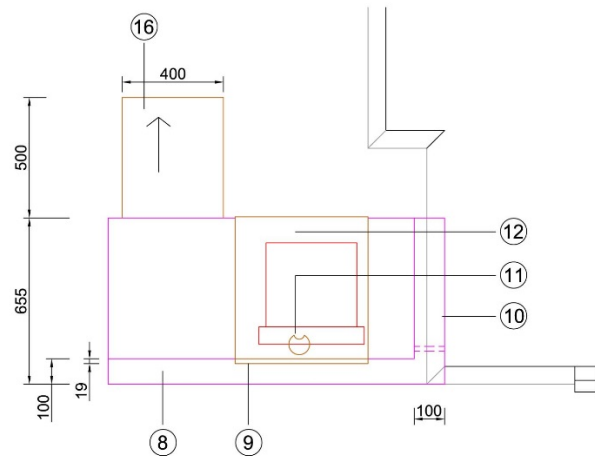


THE ROMAN BATHS BATH

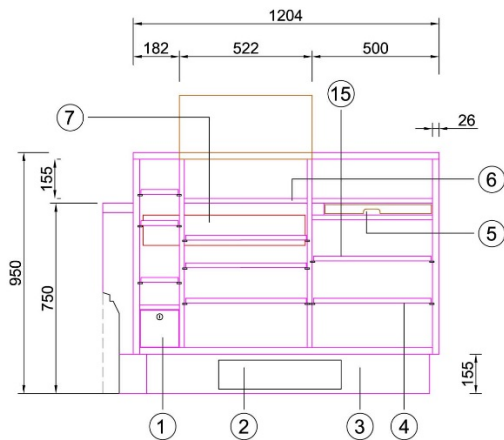
ROMAN BATHS

Lower Shop

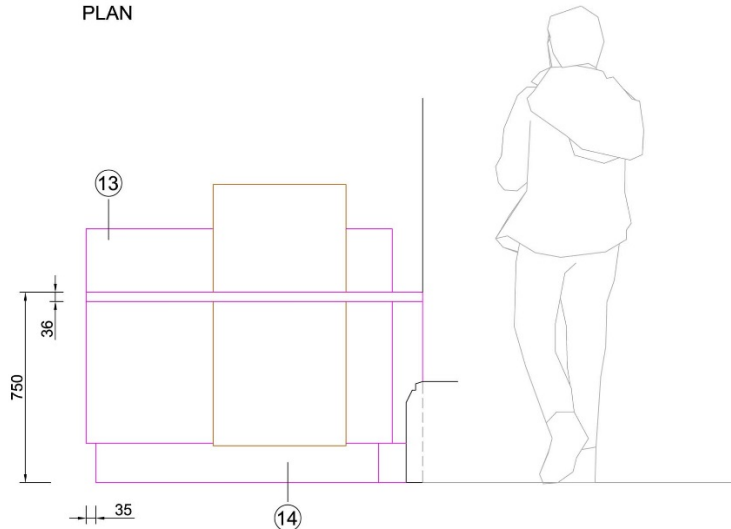
Counter Drawing



PLAN



REAR ELEVATION



FRONT ELEVATION

Key

- 1 Lockable drawer
- 2 Aperture for plinth heater (heater by others)
- 3 Rear skirting flush with carcass
- 4 Adjustable shelves within all 3 sections
- 5 Pull out packing shelf
- 6 Fixed till drawer shelf
- 7 MK Prestige 3D cable trunking to be fitted into desk ready for electrician
- 8 Display shelf
- 9 Oak veneer fascia panel with 2mm oak veneer edge band
- 10 750 shelf to run down side of desk and supplied with vertical scribe panel
- 11 Oak finish cable outlet
- 12 Oak veneer worktop section with 3mm oak edge band on rear face
- 13 All front faces, display shelf and rear outer carcass edges laminated in Polyrey B099 brushed metal finish. With (13x3)mm flat stainless steel edge detail set into exposed corners
- 14 Brushed stainless steel laminate skirting
- 15 Clear lacquered MDF rear shelving
- 16 oak veneer with 3mm oak veneer edge band pull out packing shelf

GENERAL NOTES

All dimensions for manufacture will need to be checked on site

Dwg No.

R B PR - LOWER MS C 007

Page:3

Date: OCT 2015

OPTION

2

SCALE

1:25 @ A3

Dwg TITLE

ROMAN BATHS - lower Museum Shop
NEW COUNTER

PROJECT

RETAIL ALTERATIONS

CLIENT





EXISTING UNITS

Polyrey B099 laminate with (13x3) mm aluminium edging detail