

Planting bed and raised planters		
Quantity	Botanical name	Plant size
14No.	Alchemilla mollis	
24No.	Bergenia silberlicht	2L pot
15No.	Bergenia cordifolia 'Purpurea'	2L pot
2No.	Buxus sempervirens - Recover	2No. Healthy buxus plants
6No.	Fatsia japonica - existing plants to be retained	n/a
12No.	Heuchera micrantha var. 'Palace Purple'	1L pot
15No.	Heuchera 'Red Spangles'	1L pot
9No.	Hypericum x. moserianum	2L pot
6No.	Lavendula angustifolia 'Hidcote'	2L pot
35No.	Pachysandra terminalis 'Variegata'	2L pot
6No.	Rosmarinus officinalis - Existing plants, recovered	n/a
18No.	Stachys 'Silver Carpet'	2L pot
Giant Flowerpots (FP)		
FP7+FP5+FP6	1No. Plant per pot	
3No.	Rosmarinus officinalis	5L pot
FP1+FP2	3No. Plant per pot	
6No.	Thymus 'Lemon Variegated'	2L pot
FP3+FP5	1No. Plant per pot	
2No.	Lavendula angustifolia 'Hidcote'	5L pot

DO NOT SCALE FROM THIS DRAWING

All planters shown on this drawing are to be excavated and re-instated as specified below. All excavated material to be disposed off site.

**Container planting backfilling material:**  
Geotextile: Line the bottom and sides of the container Terram T1000 separator geotextile, or equivalent, with minimum permeability of 90 l/m<sup>2</sup>s and suitable for drainage applications

Aggregate: Fill the bottom 200mm of the planters with 10-25mm lightweight expanded clay aggregate. Wrap geotextile around top of aggregate layer

Reservoir tank: Install Mona Plantsava 24L Watering Trough reservoir tank on top of aggregate layer to manufacturer's instructions. Ensure the reservoir tank is installed at a height which allows for no more than 150mm between reservoir tank and rootball.

Fill container with John Innes No 3 Compost mix to the level of the base of the largest pot. Position planting and fill the remainder of the container, leaving min 2.5cm gap between the rim of the container and the compost. Ensure that plants are packed around with compost to min 2.5cm below the rim, with no part of the leaves or flowers covered by compost. Ameliorant/ Conditioner: n/a Fertilizer: n/a

**Removal and re-instatement of plants:**  
Plants which appear to be healthy and thriving in their existing containers are to be left in situ, without replacement of the existing substrate: 6No. existing Fatsia japonica are to be retained from the previous scheme. Their location has been identified on this plan. Additionally, 6No. Rosmarinus officinalis are to be recovered from the existing scheme and re-planted as part of the proposed. Of the existing Buxus sempervirens, 2No. of healthy and thriving shrubs are to be recovered and re-planted.

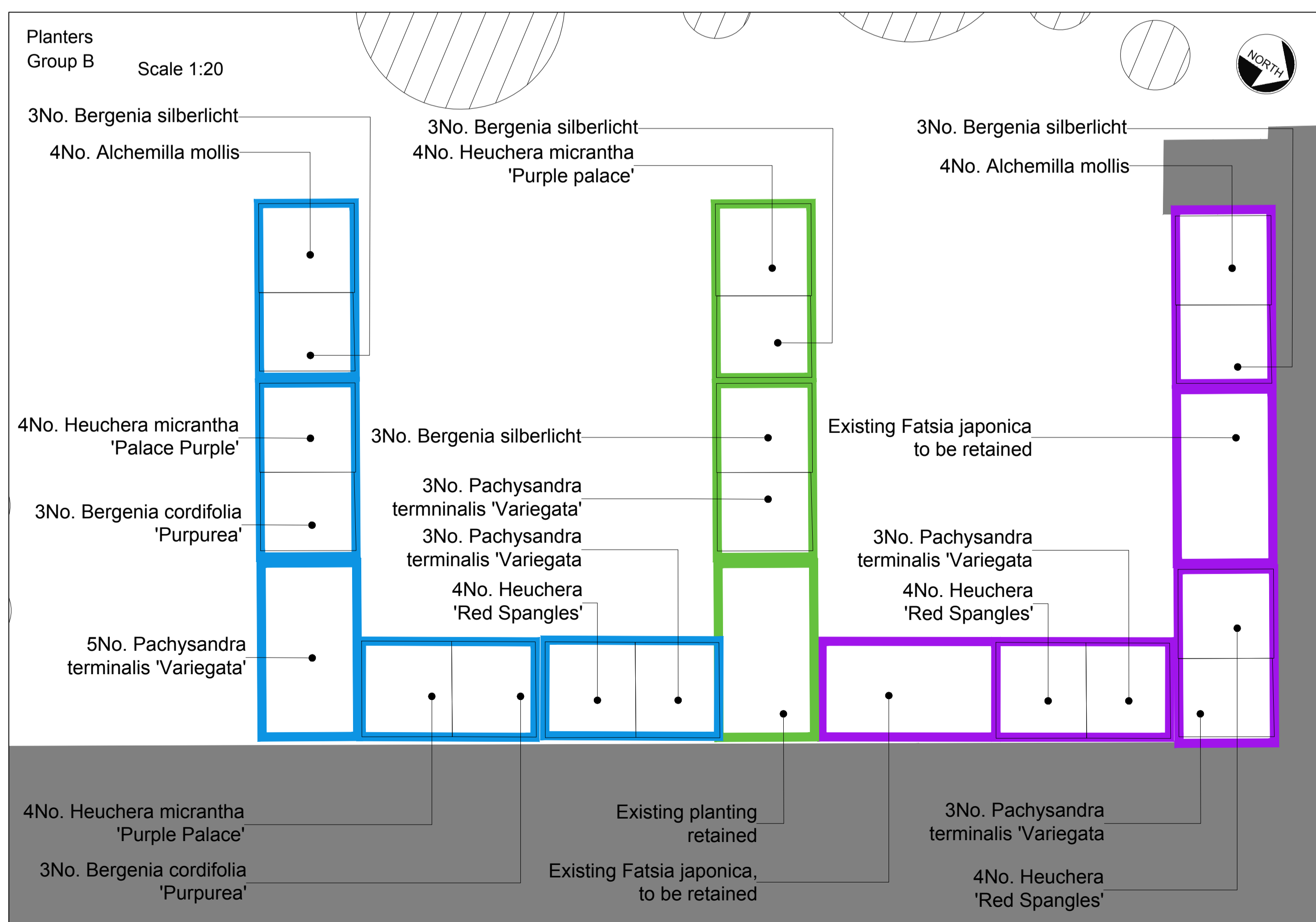
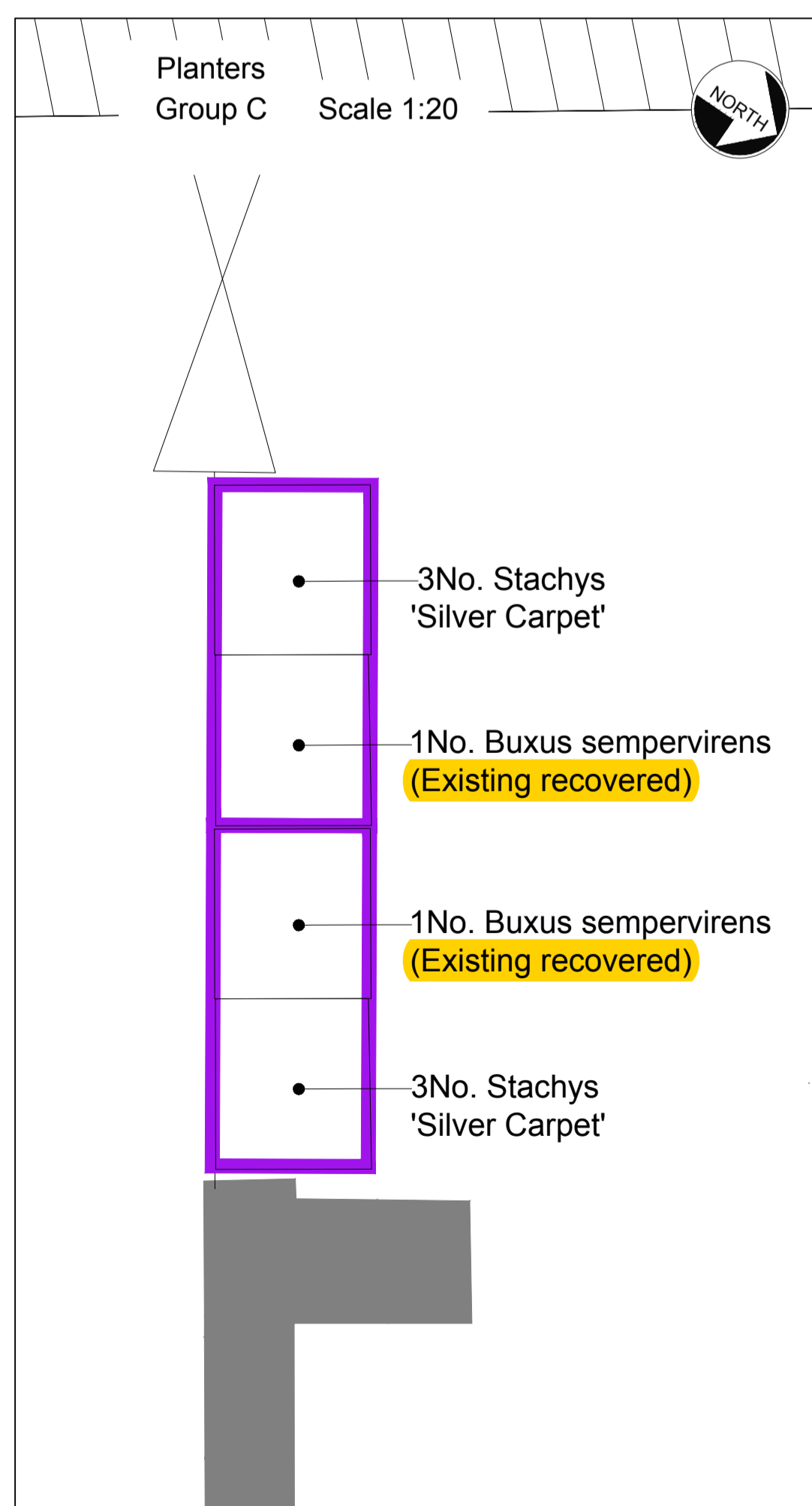
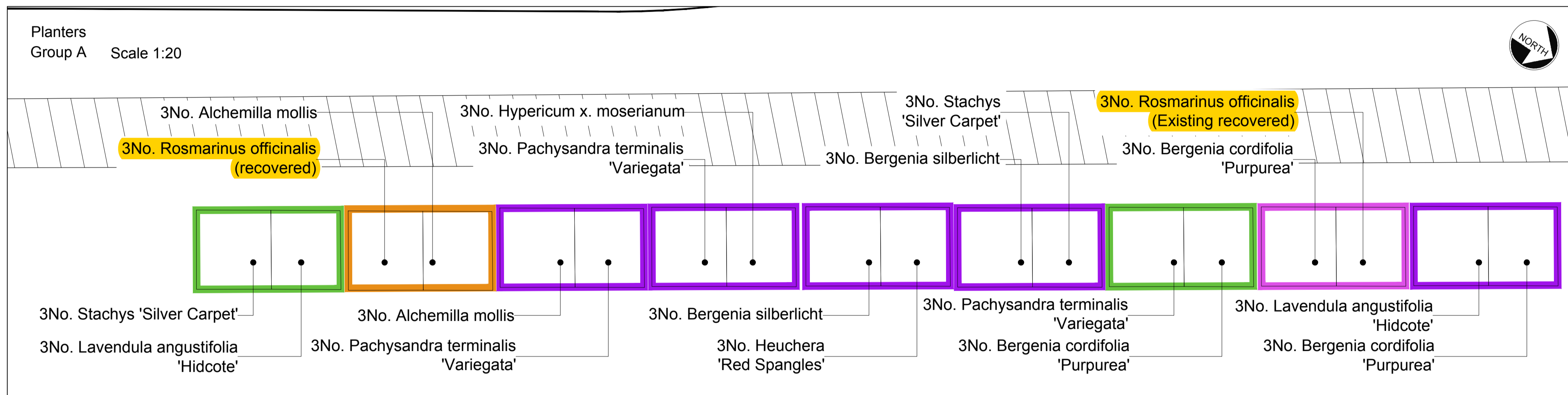
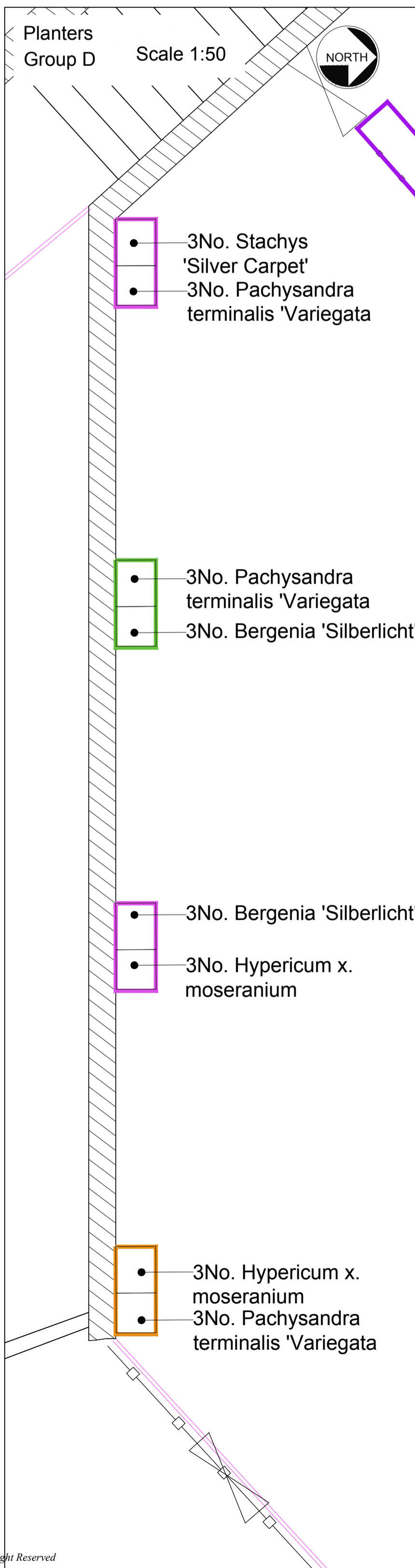
To ensure the continued health of any plants to be recovered from the existing planting scheme, carry out the following:

Place tarpaulin of a size to fit all existing healthy plants on asphalt surface, to avoid staining. Prepare black polyethylene bags for storage of plants once removed from planters.

Carefully lift individual plants taking care to collect the undamaged rootball. Immediately water the plant rootball and place in an upright position within black polyethylene bag until they can be safely re-planted.

Should the operation of re-instating backfilling material exceed 2 days, plants should be well watered and placed within individual black polyethylene bags, ensuring leaves and stem are clear of the bag. Plants must be stored in a cool, dry and sheltered location until re-planting. Dispose of any dead or damaged plants. Damaged top or root growth shall be carefully removed. Any plants becoming misshapen or struggling to survive as a result of damage prior to, or at, planting, or as a result of poor planting, shall be removed and replaced with suitable material at the contractor's cost.

Maintenance to be carried out as outlined in the Landscape Specification ST15536-SP-002, Rev. B, Section Q35



REVISION	DETAILS	DATE	ISSUED BY	APPROVED BY
C	Revised planting specification and numbers to all planters. Revised backfill specification added to drawing.	20.01.18	YK	ARW
B	quantities amended and 60no Vinca minor added	27.03.18	YK	TM
A	Planting plan revision - part replacement of existing plants	01.04.2017	YK	ARW

CLIENT: P-H-D Pinnegar Haywood

PROJECT: Holden Lane - Landscape Design

DRAWING TITLE: Softworks - Planting Plan Courtyard

DRG No: ST15536-400-SW-008 REV: C

DRG SIZE: A1 SCALE: As shown DATE: January 2019

DRAWN BY: YK CHECKED BY: GR APPROVED BY: ARW

STAKE-ON-TRENT (HEAD OFFICE) TEL: 01782 278700 WEB: WWW.WARDELLARMSTRONG.COM

BRISTOL BRIMINGHAM CARLISLE CROYDON EDINBURGH GLASGOW LEIGH LONDON MANCHESTER NEWCASTLE UPON TYNE SHEFFIELD TAUNTON

wardell armstrong your earth our world