

Contractors to check all dimensions on drawings.

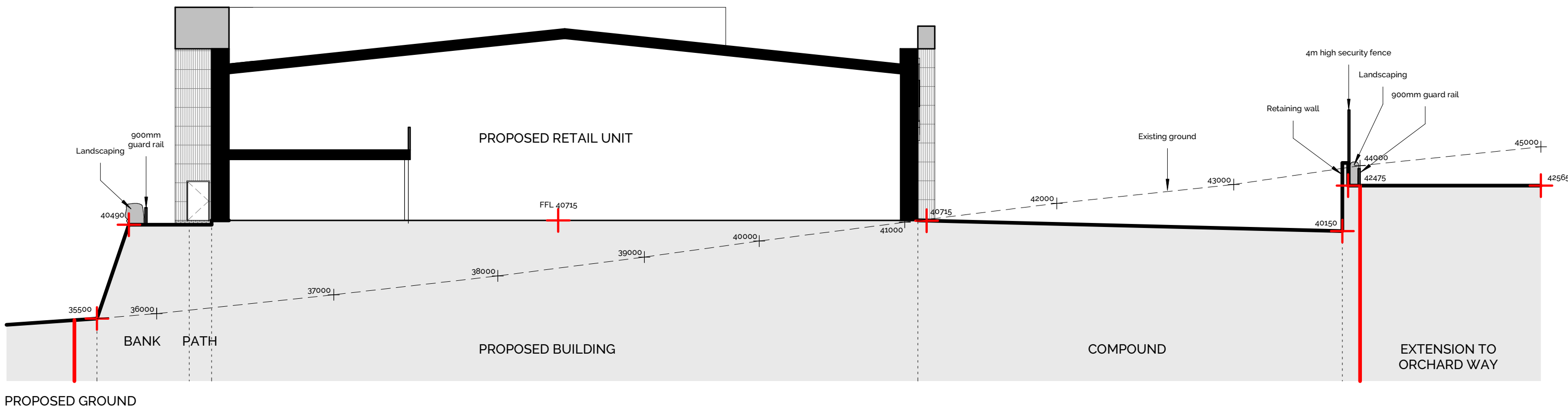
Any discrepancies must be reported to KTA Architects Ltd or the contract administrator before proceeding.

Do not scale except for planning purposes, work to figured dimensions.

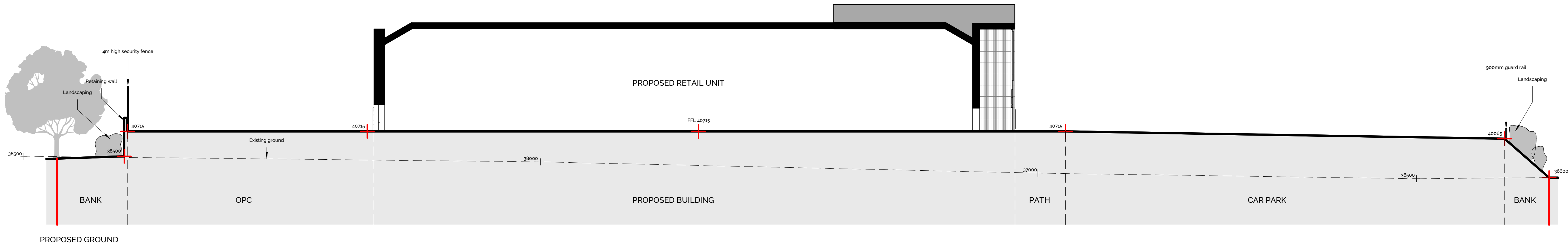
This drawing must be read in conjunction with all relevant consultants drawings.

This drawing is © KTA Architects Ltd.

Revision Schedule			
Revision Number	Revision Date	Revision Description	Issued/ Authorised by
P2	MARCH 2021	PLANNING ISSUE	MC/AC
P1	FEB 2021	DRAFT PLANNING ISSUE	MC/AC



Section A
1 : 200



Section B
1 : 200

PLANNING ISSUE



Kensington Court, Woodwater Park, Pynes Hill,
Exeter, EX2 5TY

Tel: 01392 360338
Email: kt@kta.uk.com
Web: www.kta.uk.com

Project
Edginswell, Proposed
Retail Unit

Title
Site Sections

PLANNING Author MC Checked by AC

Date 02/03/2021 15:11:54 Scale As indicated @ A1

Project 2047 Status Pre Construction

Drawing number
WE-KT-XX-XX-DR-A-2047-SK400-S0-P2

