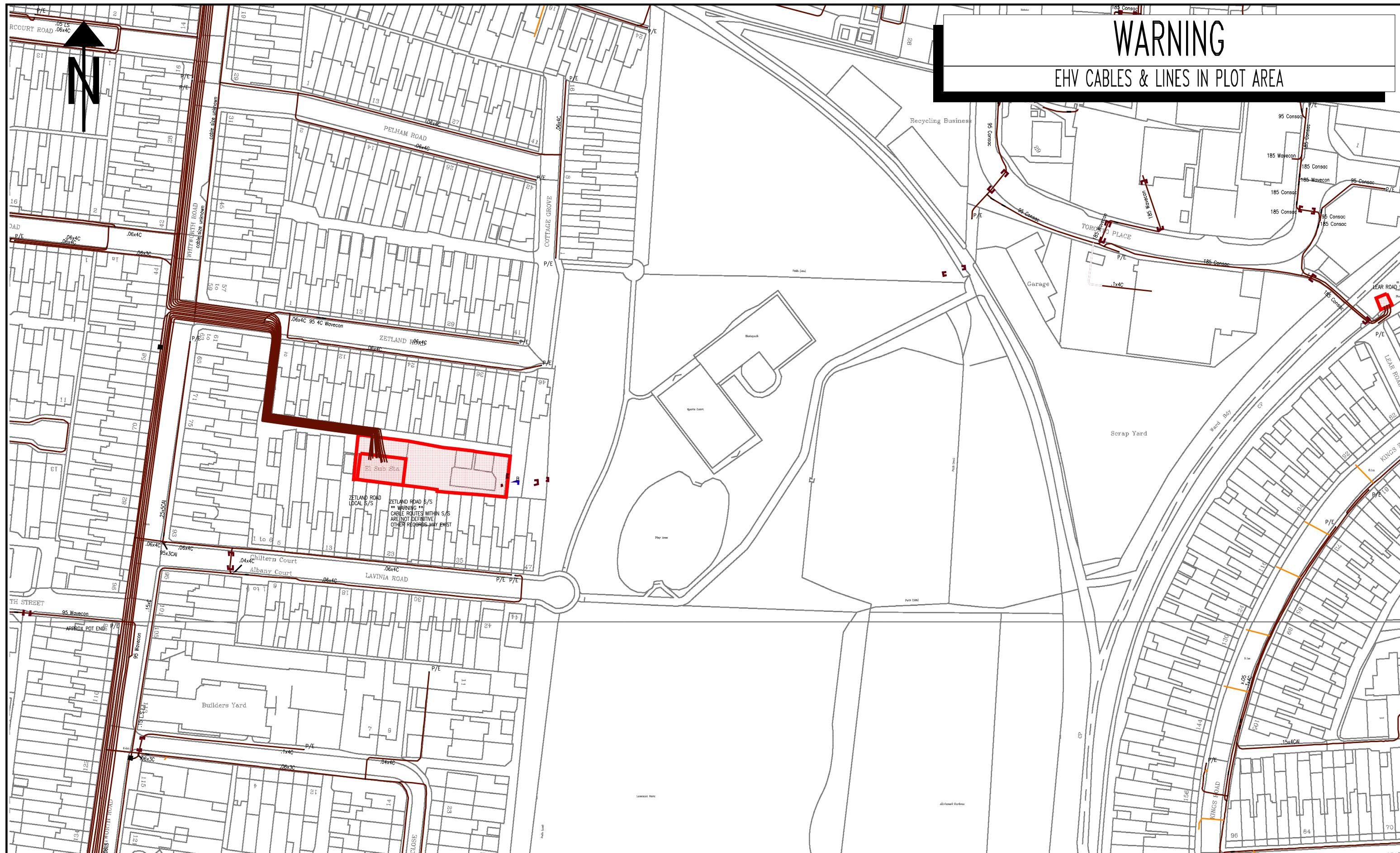


WARNING

EHV CABLES & LINES IN PLOT AREA



	services	l.v.	h.v.	e.h.v.
FOOTPATH	0.40m	0.45m	0.60m	0.75m
ROAD CROSSING	0.60m	0.60m	0.75m	0.90m
l.v./services	- up to 1000V.			
h.v.	- over 1000V. to 11,000V.			
e.h.v.	- 22,000V. to 132,000V.			

WARNING

There may have been subsequent alterations to the surface levels. Trial holes must be taken to determine positions and depth of cables. HS (G) 47 Booklet from the Health and Safety Executive - Avoiding Danger from Buried Cables - should be consulted before commencing excavation work. (available from the HSE)

WHEN WORKING IN THE VICINITY OF OVERHEAD LINES THE HEALTH AND SAFETY GUIDANCE NOTE GS6 SHOULD BE CONSULTED. (AVAILABLE FROM THE HSE)

BASED UPON THE ORDNANCE SURVEY MAP WITH THE SANCTION OF THE CONTROLLER OF H.M. STATIONERY OFFICE. CROWN COPYRIGHT RESERVED.

This copy has been made by or with the authority of Southern Electric Power Distribution plc. pursuant to section 47 of the Copyright, Designs and Patents Act 1988 ('the Act'). Unless the Act provides a relevant exception to copyright, the copy must not be copied without the prior permission of the copyright owner.
Template: S/SAS MRSMA COL A5 plot

Southern Electric Power Distribution plc.
Registered in England No. 04094280
Registered Office: No. 1 Forbury Place,
43 Forbury Road, Reading, RG1 3JH

UNCONTROLLED COPY
Subject to Revision Master held at

lv_1250_500

PORTSMOUTH
023-9262-4200



Grid Ref: su60660007

Scale: 1:1250

Date: 02/07/2019

LV