



Liverpool
City Council

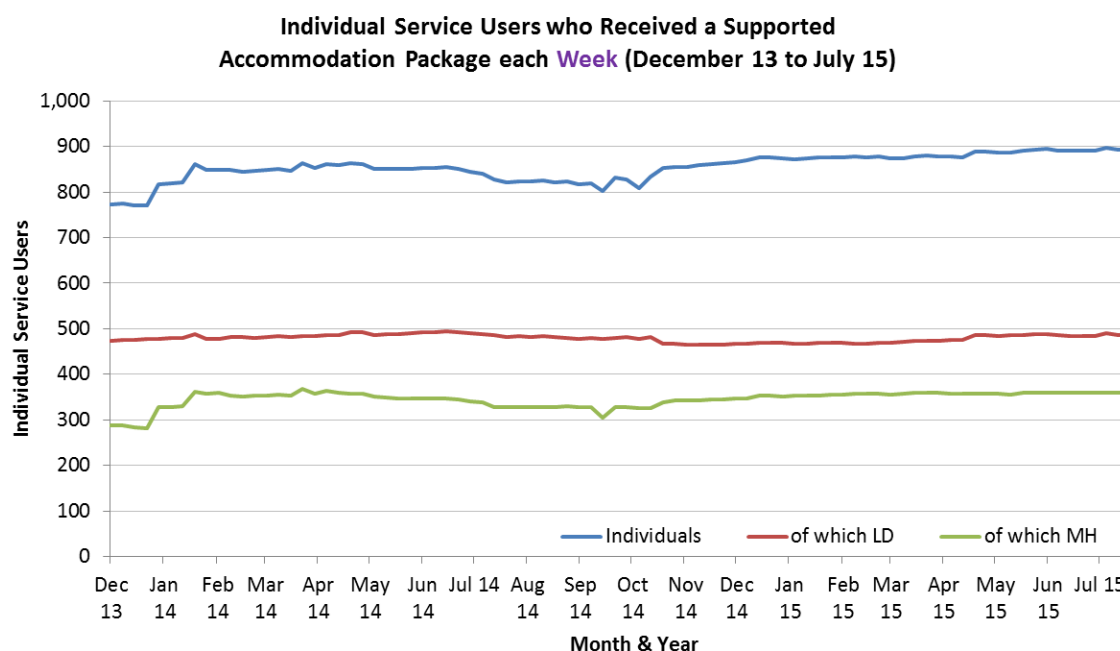
Adult Services and Health

2016 Market Position Statement

Appendix 3: Supported Accommodation and Supported Living & Community Support

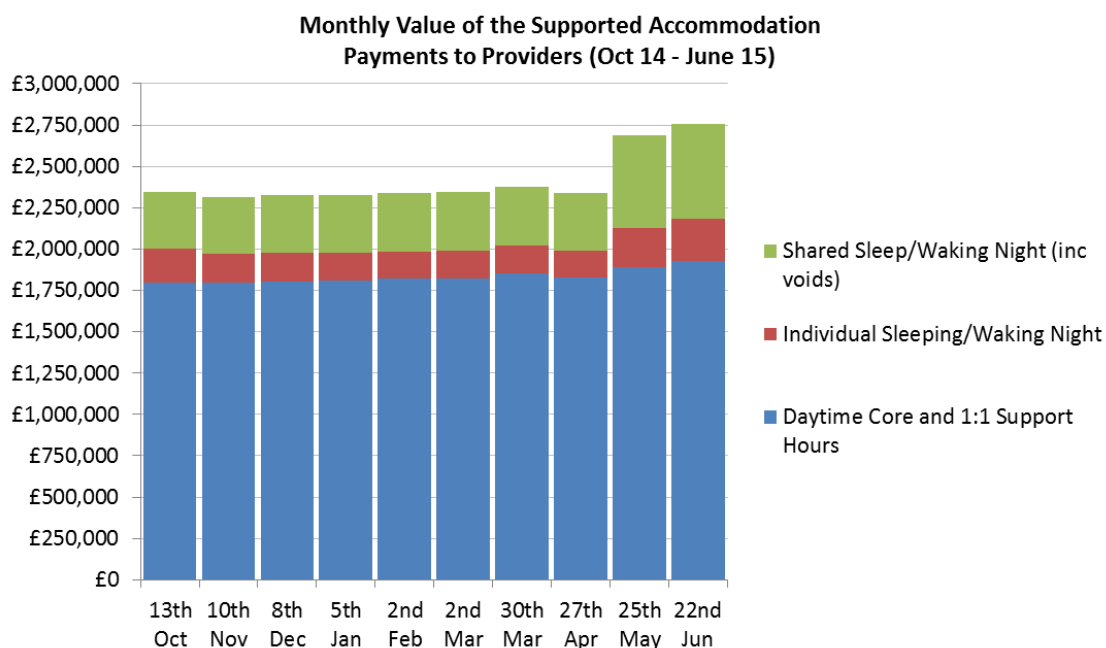


Local Authority Commissioned Supported Accommodation Packages



On average, Supported Accommodation care packages are the most expensive that the Local Authority funds, at **over £700 per week per person**, and as an overall service, it is the second most expensive behind residential/nursing care.

The chart indicates that the numbers have remained very consistent over the past 20 months. This is largely because almost all of the Service Users who require this service have Learning Disability or Mental Health needs, and these two populations have remained, and are expected to remain very static over the coming years.



Therefore, whilst there has been little change for the demand in this service, the overall total Service Users accessing it has remained very consistent.

The reason for the large increase from 25th May 2015 is due to rate increases.

Before this the payments (similar to the number of Service Users) had remained very consistent at c£2.25m per month.

However, the rate increase (particularly for sleeping nights) has resulted in £400,000 extra per month being paid to providers. Daytime hours still account for 70% of the payments though, which consist of a mixture of the following rates.

Our Standard Rates (Based on our Guide Prices)



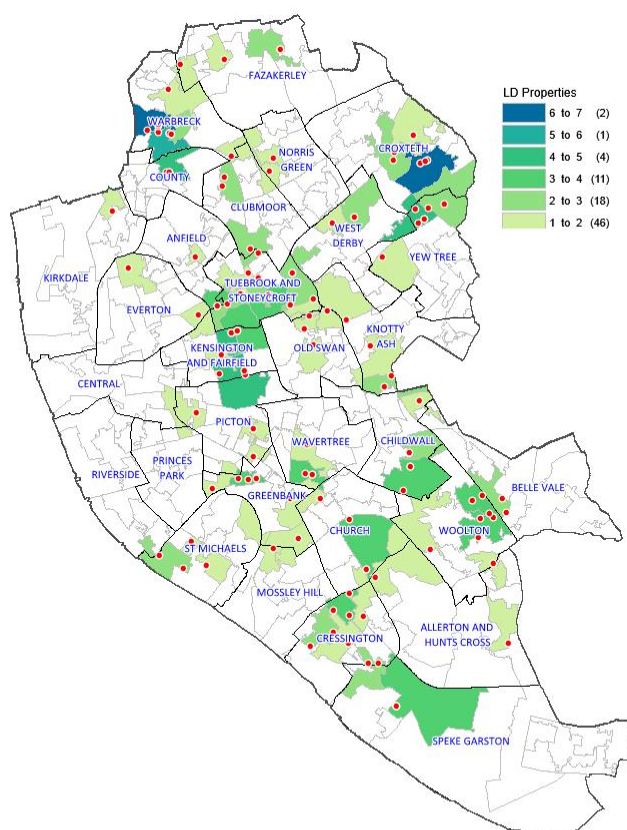
Daytime Core and 1:1 Support

Standard Hourly Rate	£12.76 p/h
2:1 Complex Hourly Rate	£24.08 p/h
3:1 Complex Hourly Rate	£35.41 p/h

Sleeping and Waking Nights

Shared Sleep	£564.90 per property p/w
Shared Waking	£681.80 per property p/w
Individual Sleep	£8.07 p/h
Individual Waking	£9.74 p/h

The following two maps show where the current commissioned Supported Accommodation properties are in the city, split by those offering services for Learning Disability Services (top) and Mental Health Service Users (bottom).



Learning Disability

There are 142 separate properties that provide Supported Accommodation where there is more than one person in the property.

There are 9 that provide both shared waking and shared sleeping facilities, 99 that provide a shared sleep only, and 34 that provide a shared waking only.

These range from several properties supporting just two residents, up to those supporting 11.

The peak areas for these are in Croxteth and Warbreck. The cluster in Croxteth is around Fir Tree Drive North and Fir Tree Drive South. The key area in Warbreck is the area surrounding Rice Lane in Walton.

Overall, the Learning Disability properties tend to be in slightly more affluent areas than the Mental Health ones. An example of this is that 15% of the Learning Disability properties are in areas where the average house price is £200,000+, where just 3% of Mental

Learning Disability Supported Accommodation Properties

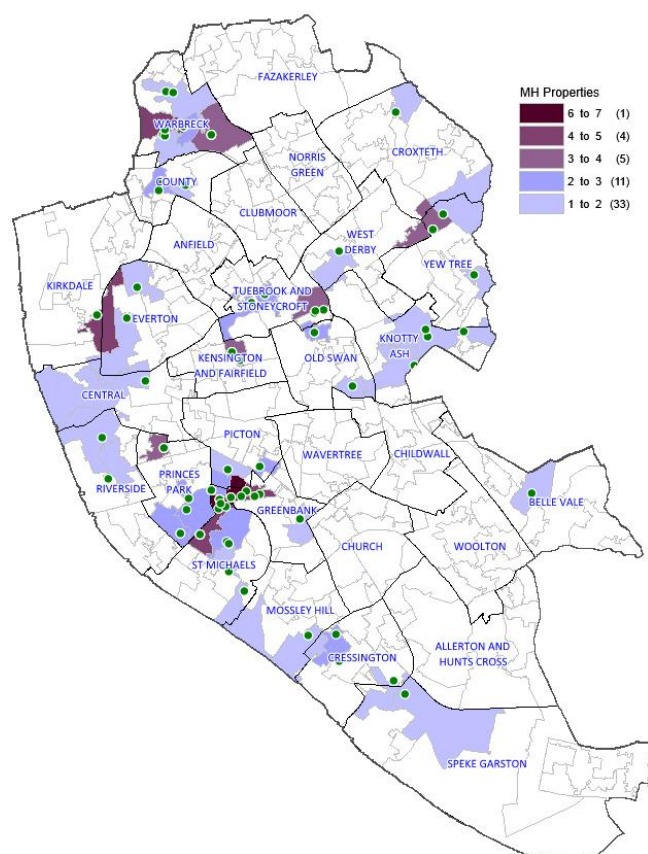
Created: 08/09/2015
Liverpool City Council
Adult Services & Health
Performance Improvement Team

© Crown copyright and database rights 2014 Ordnance Survey 100018351.
Contains National Statistics data © Crown Copyright and database rights 2012.



Health ones fall into this category.

Mental Health



Mental Health Supported Accommodation Properties

Created: 08/09/2015
Liverpool City Council
Adult Services & Health
Performance Improvement Team

© Crown copyright and database rights 2014 Ordnance Survey 100018351.
Contains National Statistics data © Crown Copyright and database rights 2012.



There are fewer Mental Health properties, compared to Learning Disability (85 as opposed to 142).

Like the Learning Disability properties, 9 do a mixture of shared sleeping and shared waking nights, with 55 doing shared sleeps only and 22 shared waking nights only.

There is very little overlap between the Learning Disability and Mental Health maps, with both largely being in separate areas of the city.

The peak area for the Mental Health properties is in between Ullet Road and Arundel Avenue in Toxteth, where in a relatively small area, there are 9 Mental Health Supported Accommodation properties.

As mentioned, the Mental Health properties tend to be in slightly less affluent areas. Where the properties are located, the average house price is just £120,000, against a city average of £136,000.

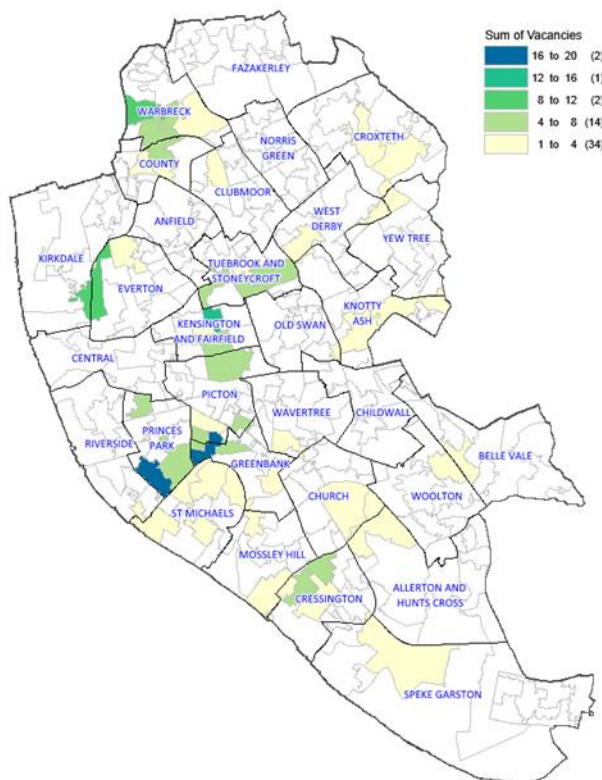
The most affluent areas of the city are Mossley Hill, Woolton, Church, Childwall and Allerton. In these areas there are 15 Learning Disability Supported Accommodation properties, compared to just 1 Mental Health.

Voids

Liverpool City Council do not pay providers for void day time hours, i.e. if there is a vacancy in the property then the LA will not cover the cost of that vacancy during the day time.

However, in terms of night cover, the Council does cover the cost of this and is paid on a block basis per property, whether the property is full or not.

Based on current data (September 2015), there are 1,032 spaces in Local Authority commissioned Supported Accommodation properties that provide shared sleeping and/or shared waking night facilities. (Please note that some properties provide both services, so in terms of unique rooms, it is slightly less than this).



Based on current data, 821 of these places are filled, meaning an occupancy rate of **79.6%**. (There are a few data quality caveats with that, and in reality, the actual percentage is likely to be slightly higher).

Therefore, this indicates that **Supported Accommodation is a slightly under-utilised service**, given that there are approximately 200 free spaces.

There is a slightly higher void rate for Mental Health properties, compared to Learning Disability, and this is reflected in the map on the right, as the hotspot for voids, coincides more with the Mental Health properties.

Long Range Forecasts

According to PANSI (Projecting Adult's Needs and Services Information System; <http://www.pansi.org.uk>), the Learning Disability population in Liverpool is to remain fairly static over the coming 10

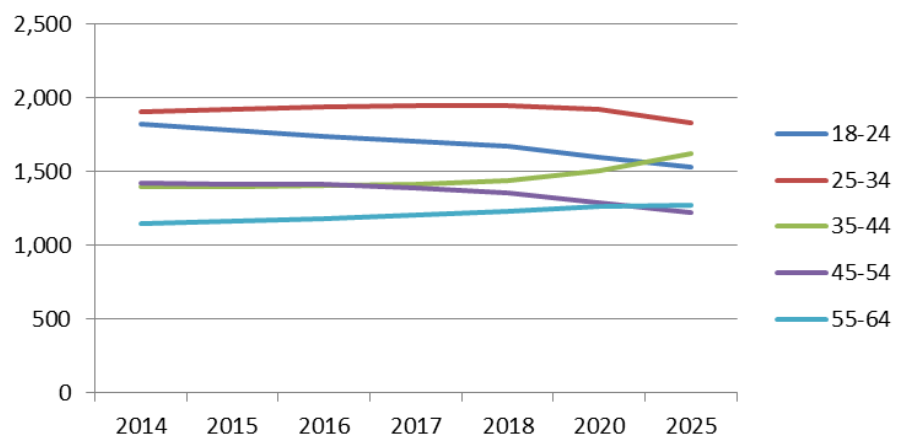
years, and those with a Mental Health disorder is expected to reduce very slightly.

As these are the two main cohorts of Service Users that tend to require Supported Accommodation, the future demand for services is expected to remain at a similar level to what it is now.

Data from Children's Services indicates that the volume of children with a Learning Disability that will be turning 18 in the coming years and will require care from Adults Services is also expected to remain consistent, at the current level (currently 22 per year).

Therefore, based on the future demand expected to be the same, with a current slightly under-utilised service, it is believed there are enough Supported Accommodation properties currently in use to meet the needs of the Service Users.

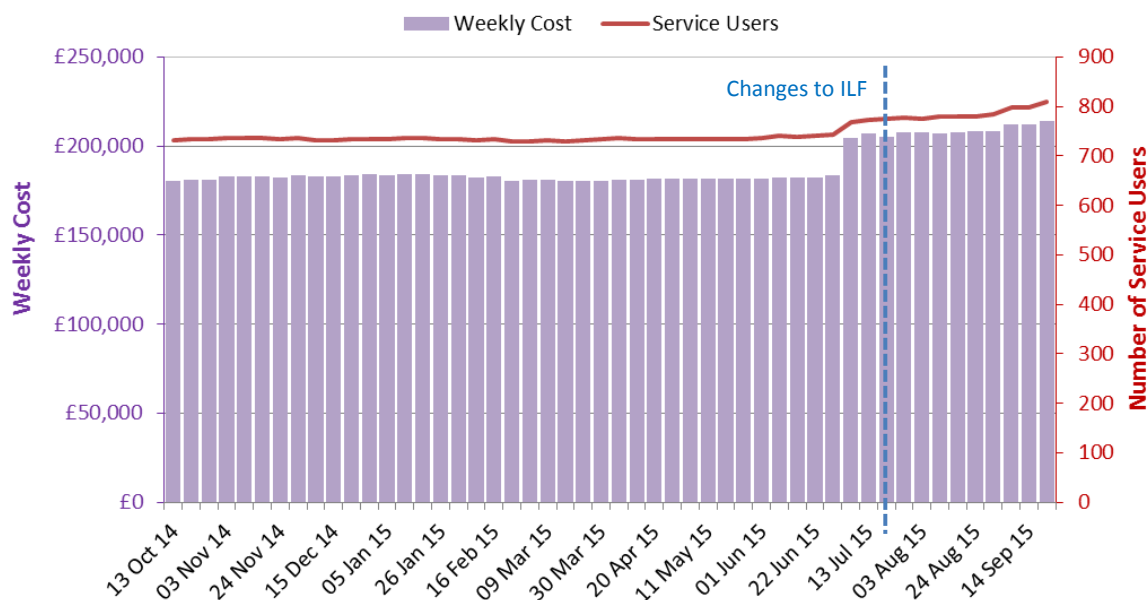
Predicted Number of Liverpool Residents with a Learning Disability (Source PANSI)



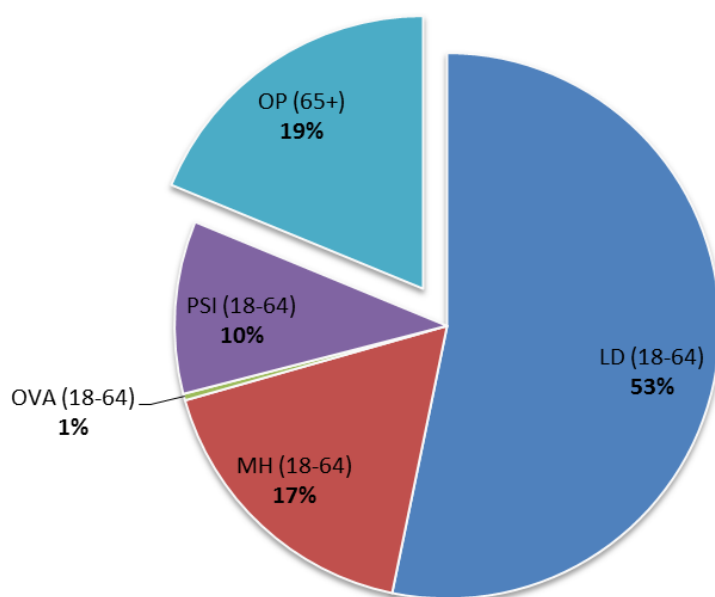
Community Support and Supported Living

Community Support and Supported Living refers to helping people in the city live independently in their own home, and support with: household tasks, maintaining a tenancy, social/leisure activities, providing care of a night (either a waking or sleeping night) and help to access employment, training or volunteering.

**Summary of Community Support and Supported Living Volumes
between October 14 and September 15**



Until the changes to the ILF came into place in July 15, the total weekly spend, and the number of Service Users remained very consistent at c£180,000 and 730 respectively. However, the ILF changes have resulted in £21,000 per week being added to the bill, with an additional 25 Service Users.



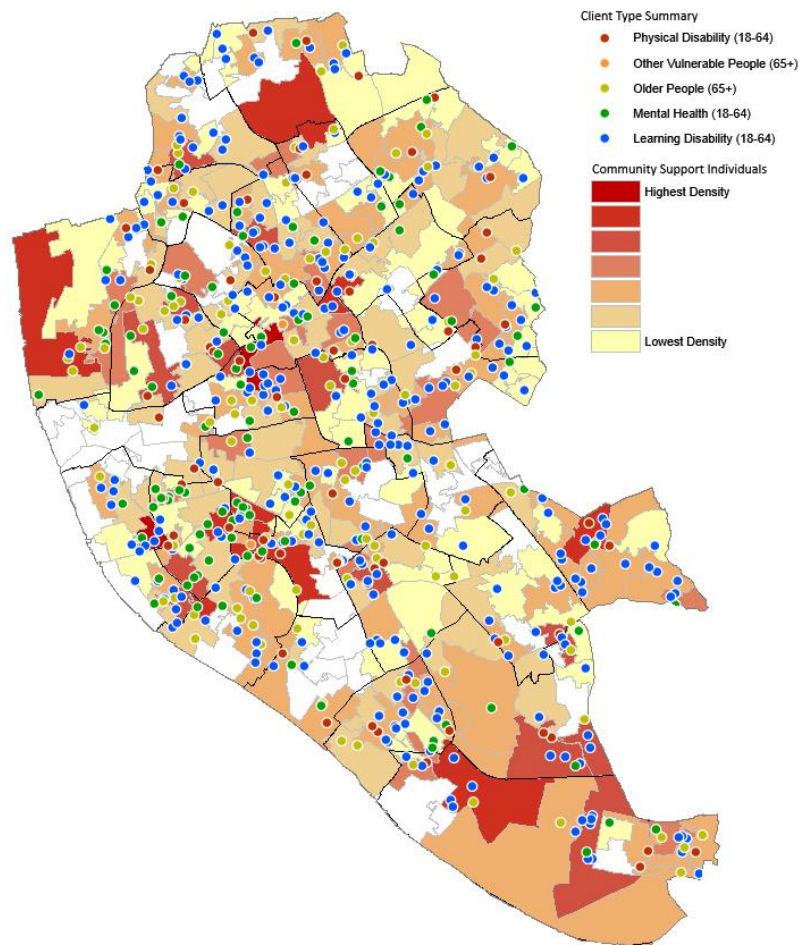
Over 80% of the current packages for Community Support and Supported Living relate to Service Users aged 18 to 64.

These services include Access Individual Support, Floating Support, Supported Employment as well as Individual Day Support.

Learning Disability is the most common client group, accounting for over 400 Service Users, totalling £140,000+ per week.

LD also have the highest average weekly cost, at almost £350 per person per week (this is almost twice the average of PSI (18-64) and OP (65+) packages).

As a service, it is the fifth largest that the Local Authority commission, but is a lot cheaper than others such as Supported Accommodation and Residential Care, but per person, it is more expensive than Domiciliary/Home Care.



Community Support & Supported Living Service Users, by Client Type

Created: 15/10/2015
 Liverpool City Council
 Adult Services & Health
 Performance Improvement Team

© Crown copyright and database rights 2014 Ordnance Survey 100018351.
 Contains National Statistics data © Crown Copyright and database rights 2012.



The map indicates that these services are spread throughout the city, and some of the areas highlighted in red above, do not necessarily tie in with other maps in the Market Position Statement. For example, Speke Garston appears more of a hotspot here, as well as the border of Norris Green and Fazakerley.

Some of the key points from the map include:

- A large proportion of the Mental Health Service Users live around the Toxteth/L8/Sefton Park area of the city. This one area accounts for almost one third of MH Service Users alone;
- The Belle Vale ward has a high proportion of Learning Disability Service Users, and the ward is second highest overall behind Speke Garston for LD;
- The Kensington and Tuebrook & Stoneycroft border also has a high number of Learning Disability Service Users, around the Newsham Park area;
- In terms of Older People receiving this service, Kirkdale is the peak ward with 10 Service Users.