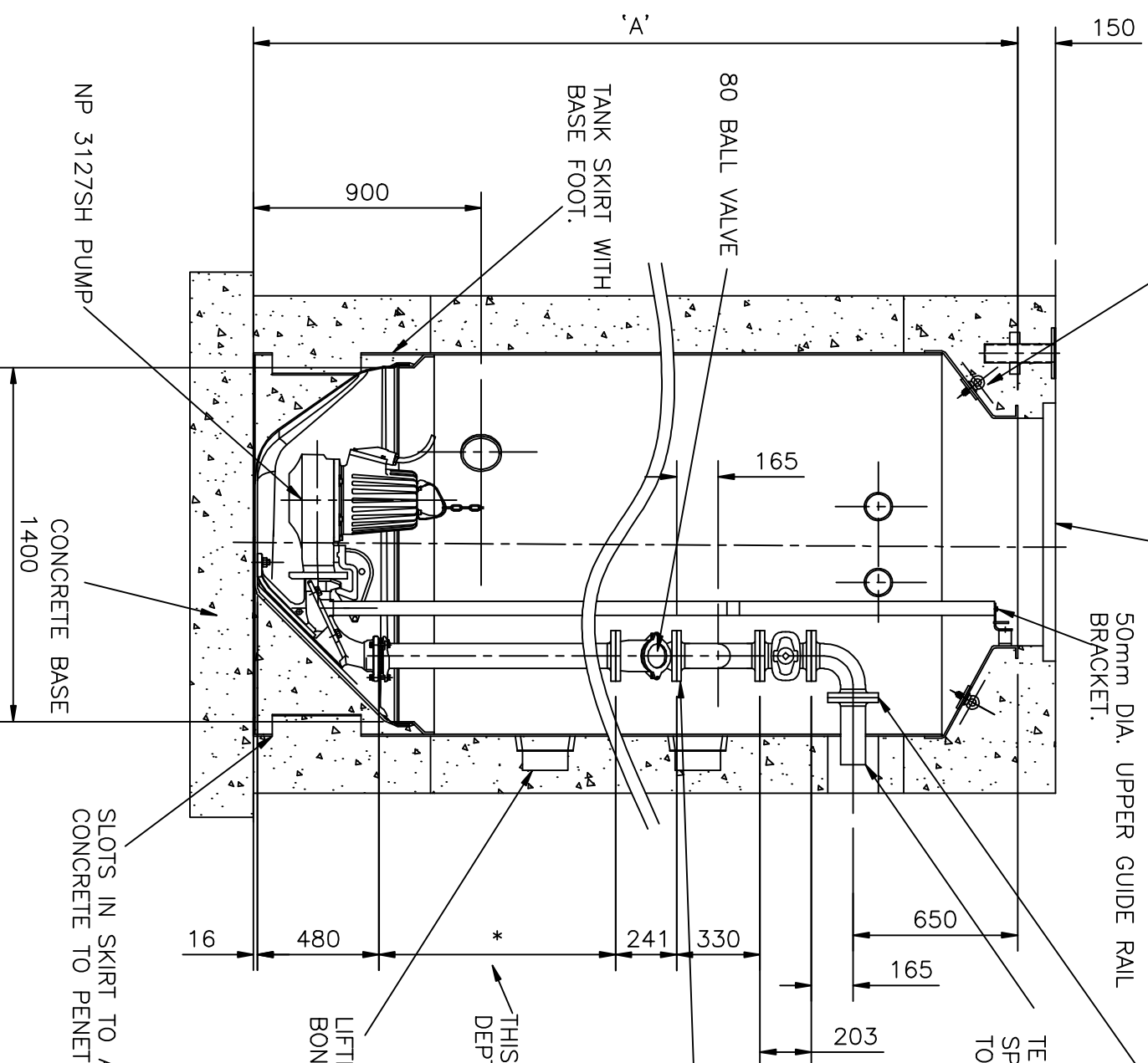


ITT FLYGT SINGLE ACCESS FRAME AND COVER 5000kg S.M.W.L.
FACTA 'B'
A REBATE 60mm WIDE x 50mm DEEP MUST BE LEFT AROUND TOP
EDGE OF CLEAR OPENING. FRAME TO BE GROUTED IN POSITION
AFTER INSTALLATION OF PUMP BY OTHERS.



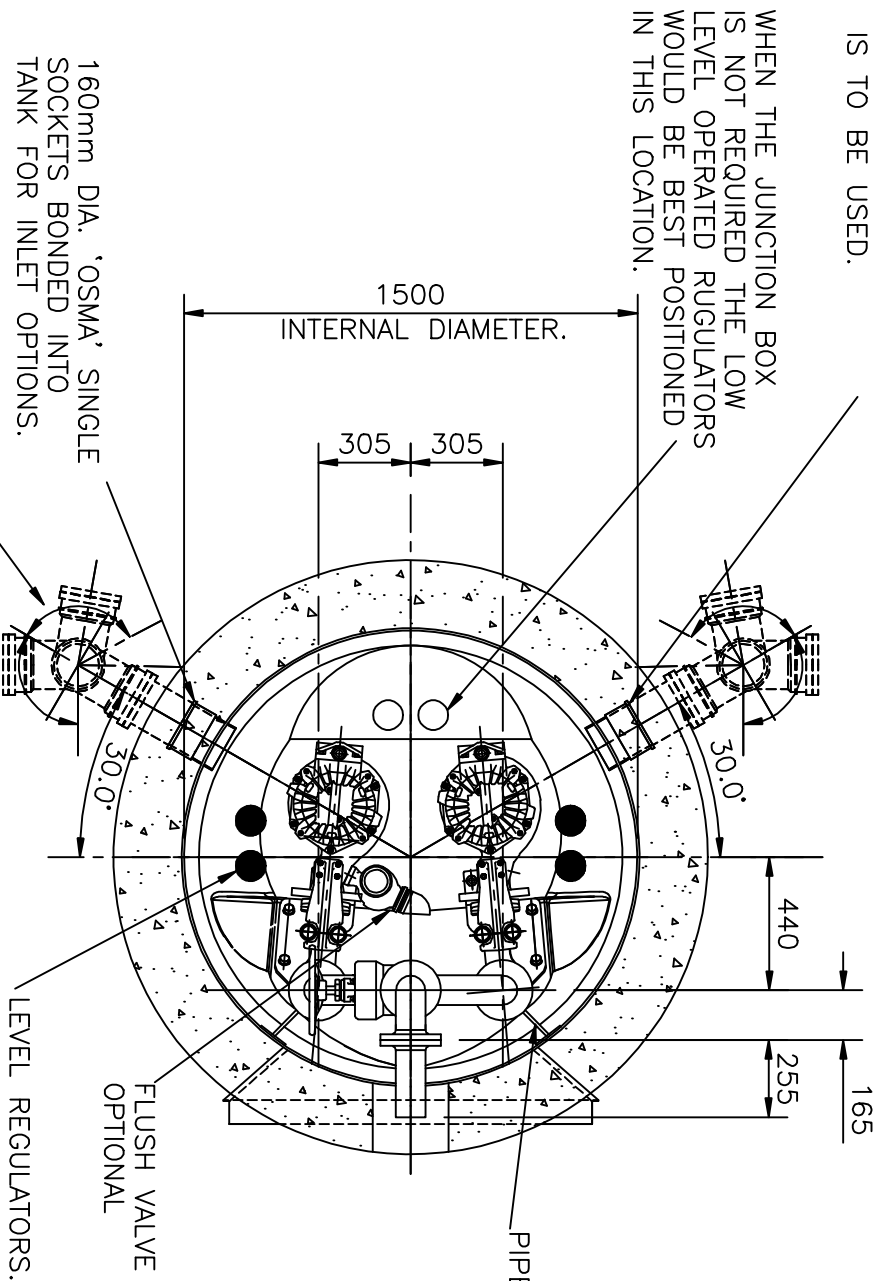
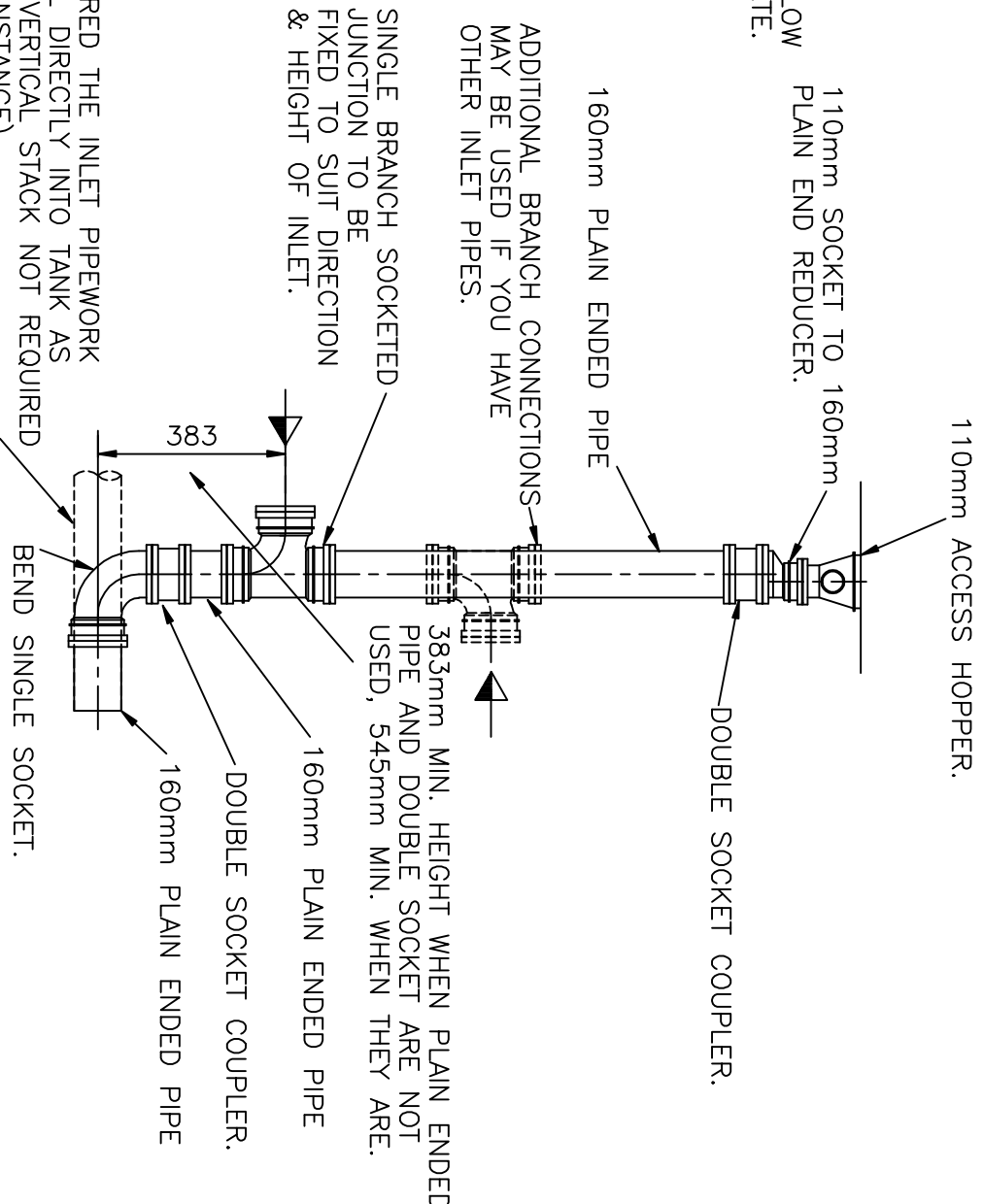
80mm DIA D.I. DISCHARGE PIPEWORK FLANGES, DRILLED TO EN598 TYPE NP16. AN ALLOWANCE MUST BE MADE BETWEEN EACH PIPE CONNECTION FOR THE RUBBER FLANGE PACKING, FLANGE ADAPTER OR PIPE COUPLING.

INSTALLATION NOTE

TANK TO BE INSTALLED BY THE MAIN CONTRACTOR IN ACCORDANCE WITH THE 'INSTALLATION INSTRUCTION BOOKLET' SUPPLIED BY FLYGT. THE CONTRACTOR THEN TO CONSTRUCT COVER SLAB.

WITH TANKS OF 5000mm DEEP 1000mm DOUBLE FLANGED PIPE INSERTED HERE. WITH TANKS OF 6000mm DEEP 2000mm DOUBLE FLANGED PIPE INSERTED HERE. PIPE SUPPORT BRACKETS BONDED TO WALL OF TANK 200mm ABOVE THIS FLANGE.

NOTE FOR INSTALLATION IN ROADWAYS OR SIMILAR APPLICATIONS APPROPRIATE LOADING ACCESS COVER TO BE FITTED. IN THIS CASE IT IS RECOMMENDED THAT THE PVC ACCESS HOPPER IS NOT FITTED. CONTINUE PIPE TO NEAR FINISHED SURFACE LEVEL AND FIT C.I. SURFACE BOX OR SIMILAR OF CORRECT LOADING.(NOT SUPPLIED BY ITT FLYGT).



SECTIONAL PLAN

160mm DIA. 'OSMA' SINGLE SOCKETS BONDED INTO TANK FOR INLET OPTIONS.

DIMENSION TO SUIT PUMP TYPE *
NP3085MT, DP3085HT=275mm.
DP3068MT=320mm
NP3102HT, SH=335mm
GP3127SH=360mm
NP3153SH, FP=410mm
DP8022=250mm
DP3152HT=365mm

JUNCTION BOX WHEN REQUIRED FIXED TO CONCRETE CLEAR OPENING VIA SELF ANCHOR BOLTS.
500kg S.W.L. DAVIT SOCKET, OPTIONAL.

ALTERNATIVE LEVEL REGULATOR BRACKET LOCATIONS. BRACKETS POSITIONED TO AVOID THE INFLOW CONDITIONS ON SITE AND THE SELECTED PUMP SIZE.

GUIDE RAIL SUPPORT BRACKET BOLTED TO TANK CLEAR OPENING

ALTERNATIVE INLET STACK LOCATIONS.

LEVEL REGULATOR SUSPENSION BRACKET FIXED TO CONCRETE CLEAR OPENING VIA SELF ANCHOR BOLTS.

PLAN OF ROOF SLAB

ALTERNATIVE LOCATIONS FOR 110mm DIA. CABLE DUCTS AND VENT PIPES. DUCTING AND VENT PIPEWORK SUPPLIED BY OTHERS.

110mm NOMINAL DIAMETER 'OSMA' SINGLE SOCKETS BONDED INTO TANK FOR CABLE DUCT AND VENT PIPES. SOCKETS TO HAVE BLANKING PLUGS FOR CLIENT TO REMOVE TO SUIT SITE REQUIREMENTS.

N.B. VENTILATION OF WET WELL

THE CONTRACTOR IS TO ENSURE PROVISION OF ADEQUATE PUMP CHAMBER VENTILATION TO ATMOSPHERE. VENT SIZE TO BE A MINIMUM OF 75mm DIA. VENT TO BE TAKEN FROM A POINT AS HIGH AS PRACTICABLE ON SITE. BS.8301.1985 SECTION 3.15.9 REFERS. VENTILATION PIPEWORK ETC. SUPPLIED AND INSTALLED BY OTHERS.

DEPTH OF TANK	STANDARD DEPTHS OF TANKS
'A'	3000mm
	4000mm
	5000mm
	6000mm

'OSMA' PIPE OR SIMILAR INLET STACK DETAIL STACK SUPPLIED BY OTHERS

IF REQUIRED THE INLET PIPEWORK MAY FALL DIRECTLY INTO TANK AS SHOWN (VERTICAL STACK NOT REQUIRED IN THIS INSTANCE) IT SHOULD BE NOTED THAT THE REGULATOR HEIGHTS WILL HAVE TO BE INCREASED IF THE PUMP FLOW RATE IS ABOVE 6 l/s OR THE DP3068MT AND THE DP 3152 HT PUMP RESTRAINTS ARE ENCOUNTERED. REFER TO GRAPH TOP 150L IN 'INSTALLATION INSTRUCTION BOOKLET' OR DRAWING F3.75214. IN THESE INSTANCES BACKING UP OF THE INLET SYSTEM MUST BE MADE.

A	ORIGINAL ISSUE	Issue	Date
Issue	Description	FLYGT	Request by
Engineer	Customer Name	Request by	Insert by
Drawn by	Customer Name	Request by	Insert by
Date	Customer Name	Request by	Insert by

'TOP' 100S GRP STANDARD TANK ARRANGEMENT

FLYGT

VALVE ARRANGEMENT

AutocAD

ITT	FLYGT	ITT Water & Wastewater UK Ltd, Colwick, Nottingham, NG4 2AN	Scale	1 : 25	Drawing Number	F2.75218	Issue	A
		Tel. (0115) 9400111						
		Fax. (0115) 9400444						