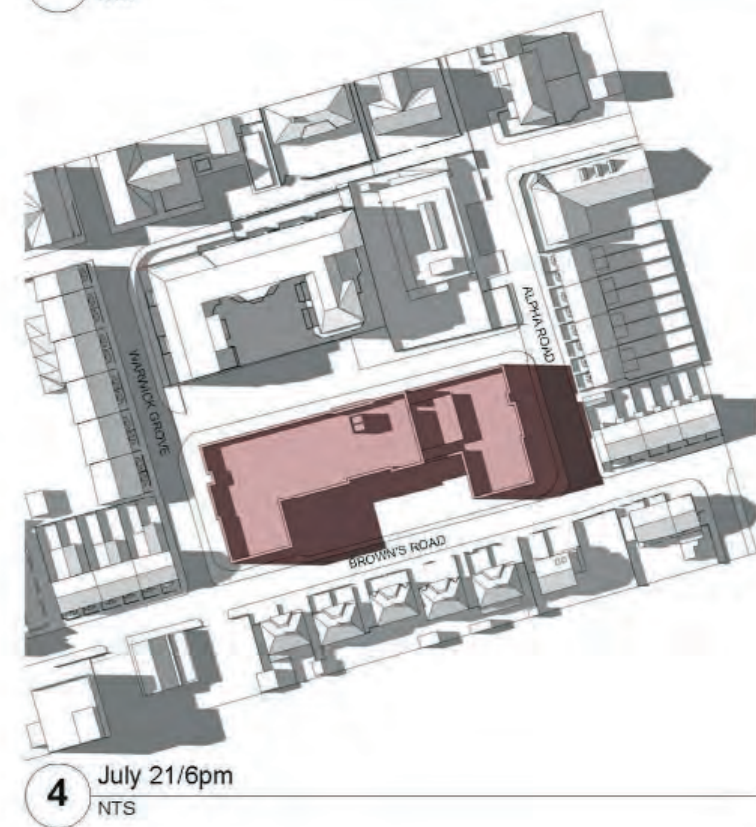
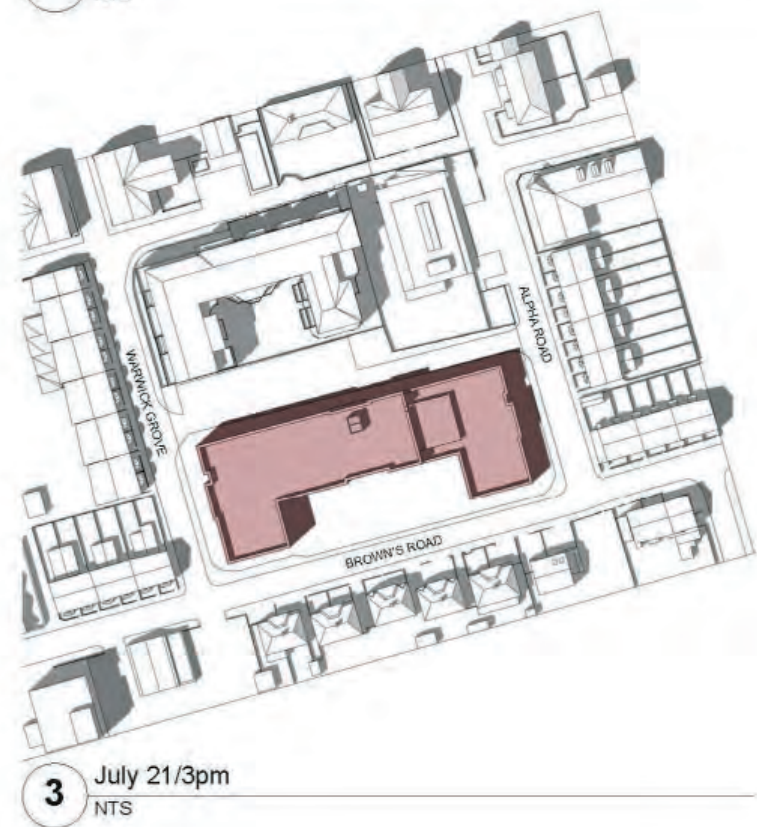
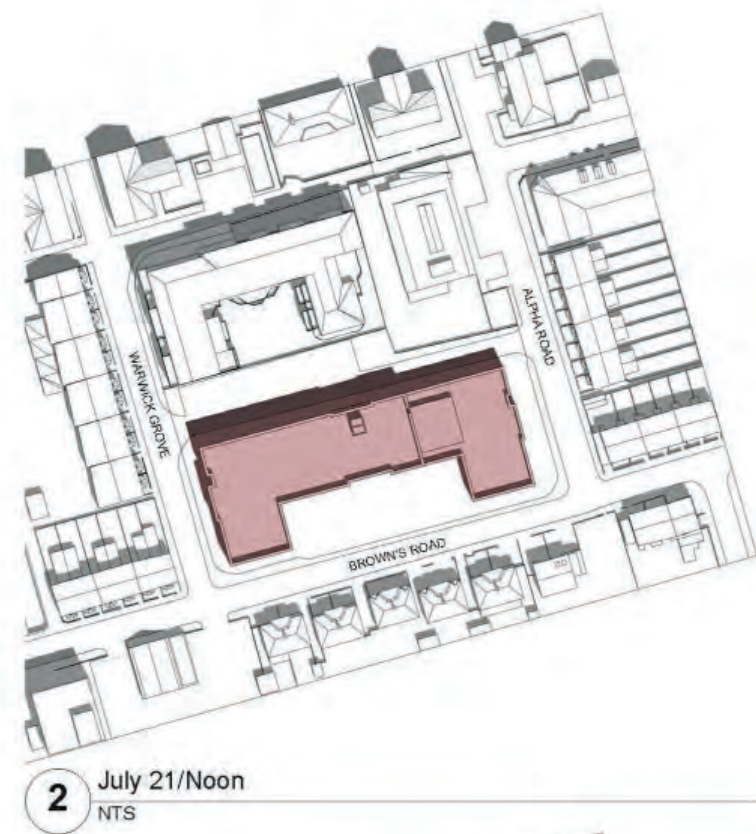
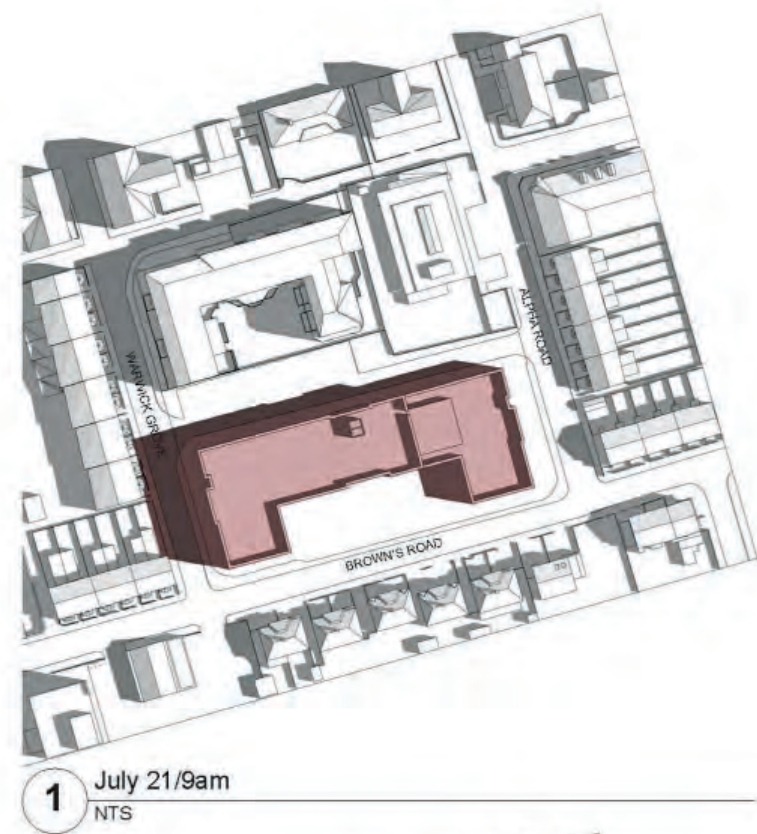
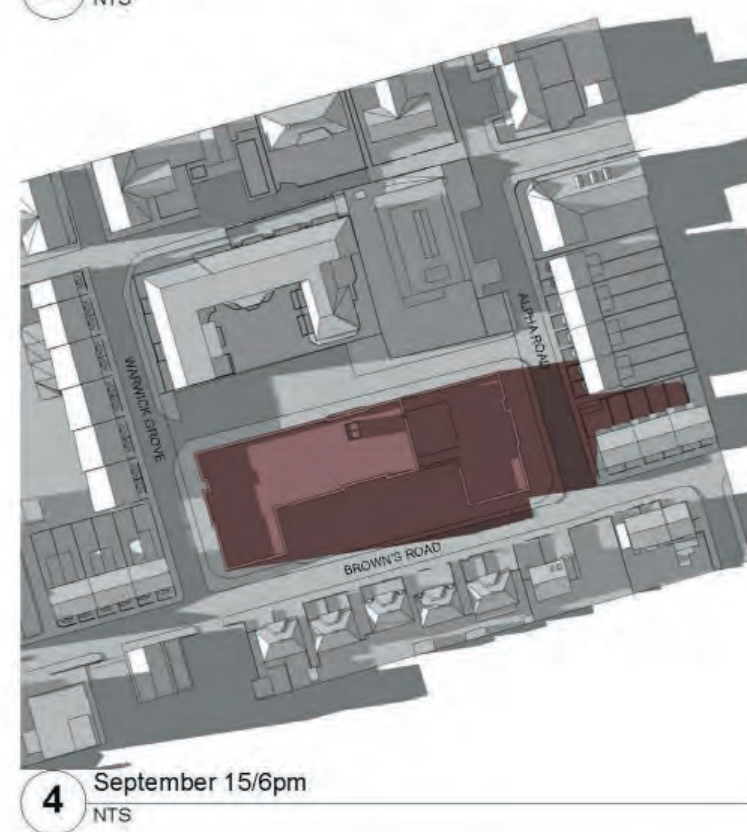
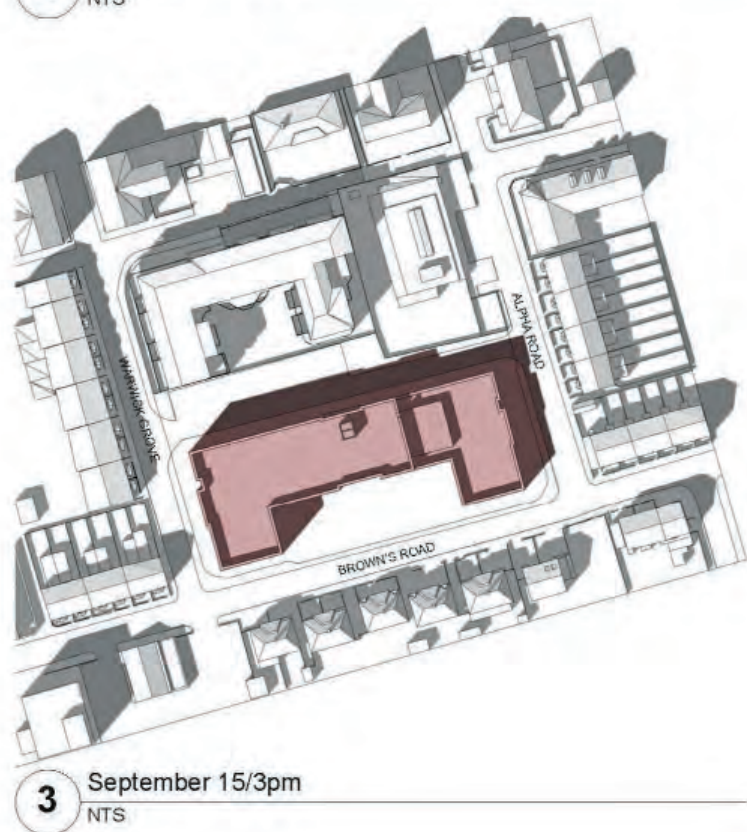
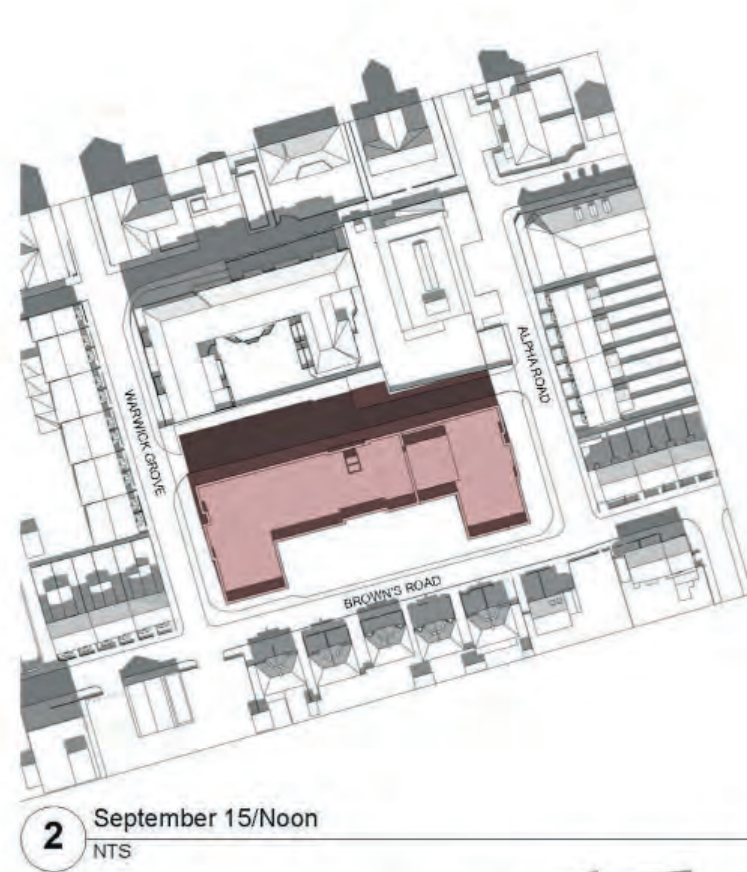
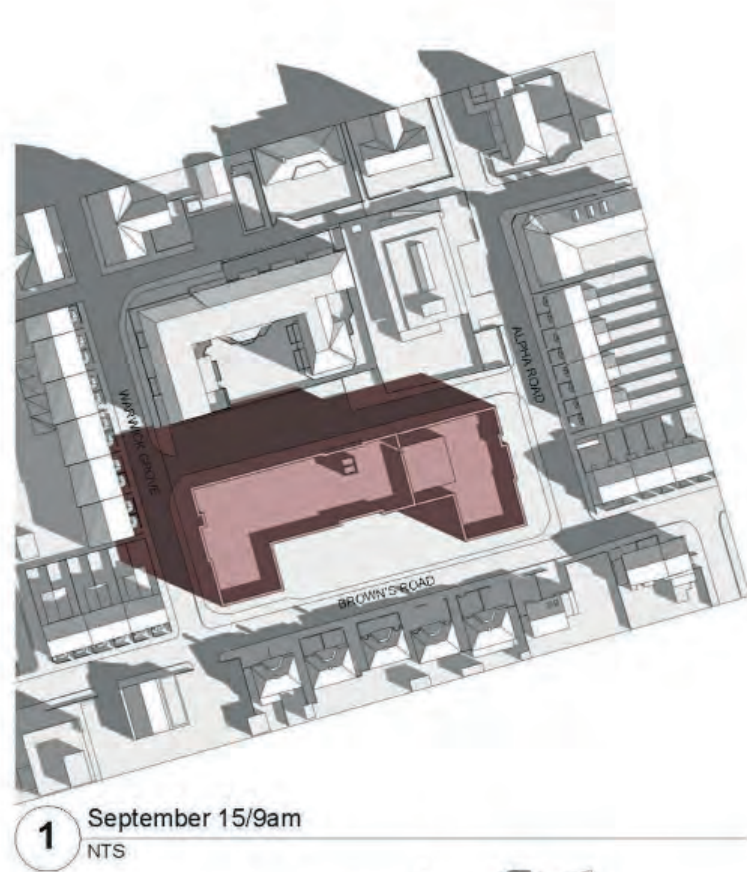
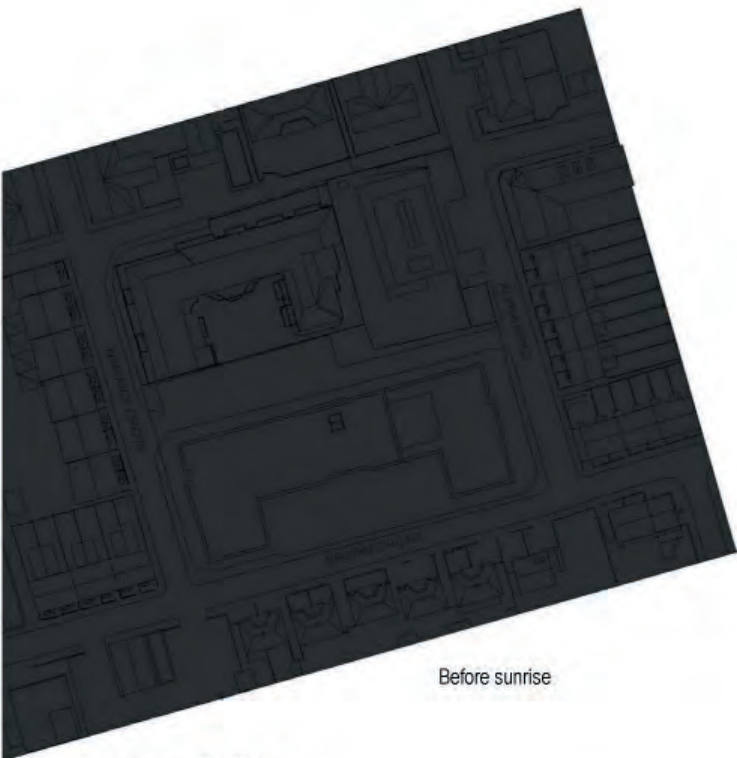


3.8 Sun Path Analysis

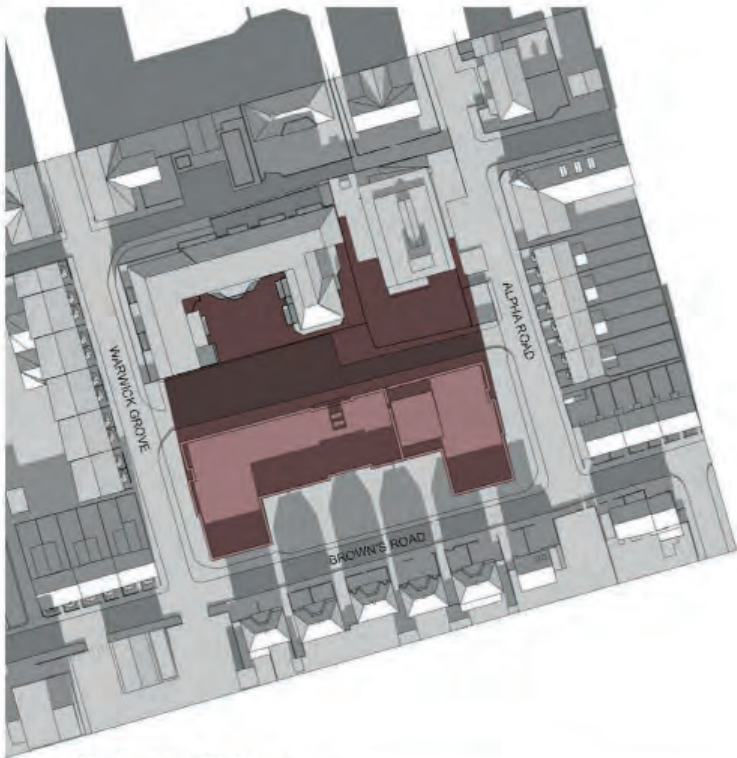
Sun path analysis conducted by IBI Group shows the negligible impact the proposed Dementia Nursing Home has on its' surroundings.



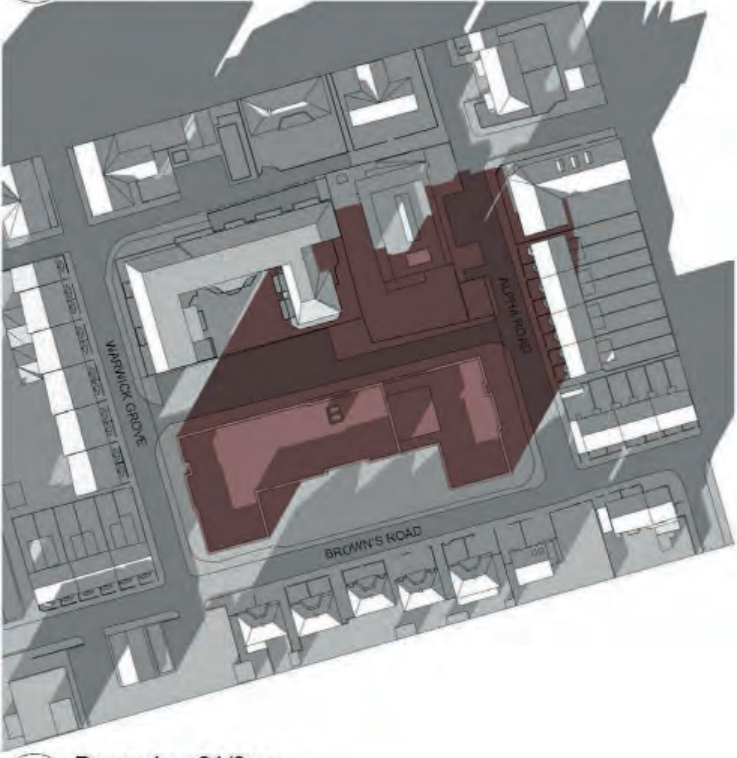




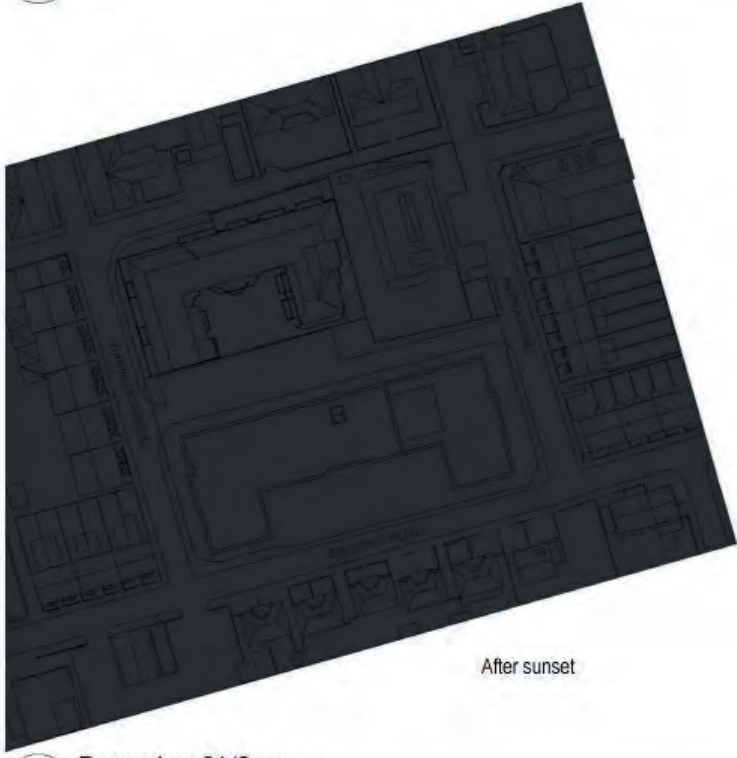
1 December 21/9am
NTS



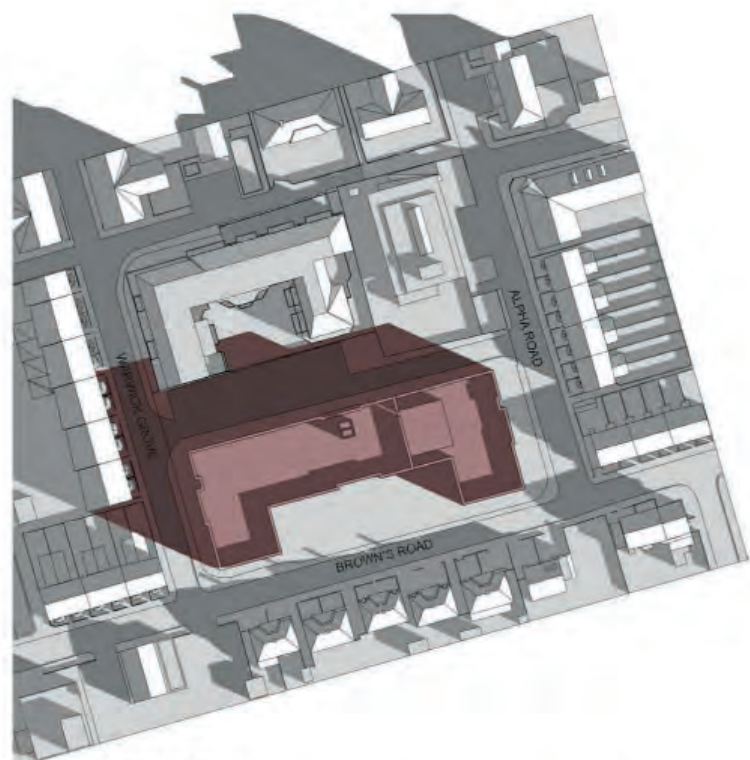
2 December 21/Noon
NTS



3 December 21/3pm
NTS



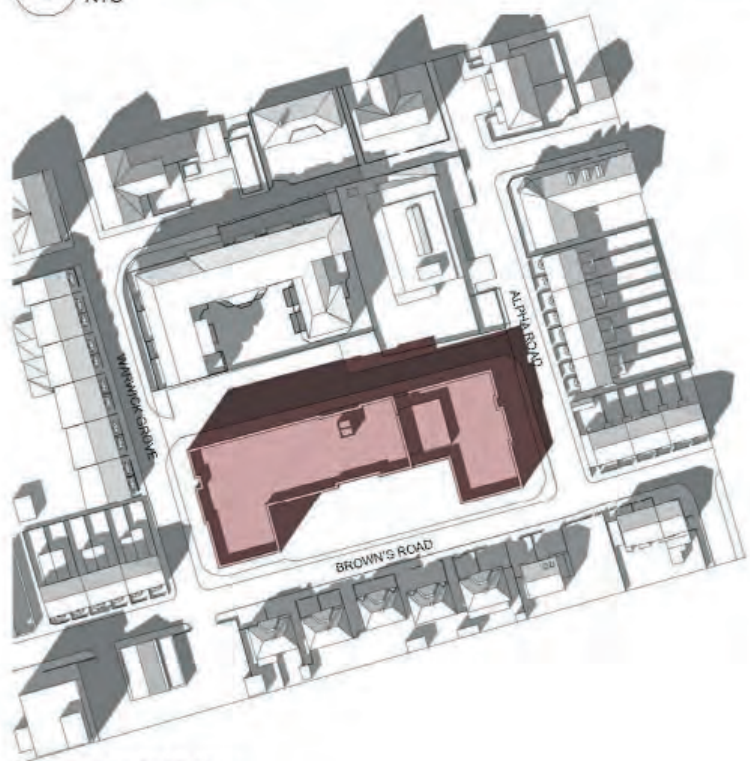
4 December 21/6pm
NTS



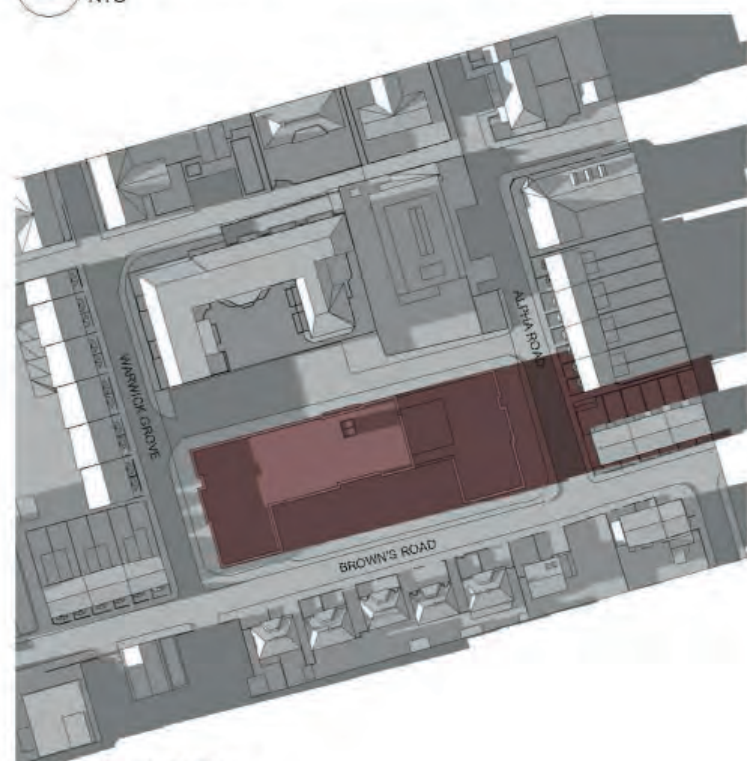
1 March 15/9am
NTS



2 March 15/Noon
NTS



3 March 15/3pm
NTS



4 March 15/6pm
NTS

3.9 Typical Care Bedroom

There is a commitment by the client (RBK) for tenure blind accommodation and all bedrooms are spacious 23 sq.m. to ensure that any bedrooms could also provide bariatric care. This is considerably larger than provided by most of the care home providers.

Recessed doorways provide an opportunity for personalisation, which can assist residents with dementia to recognise their own front door.

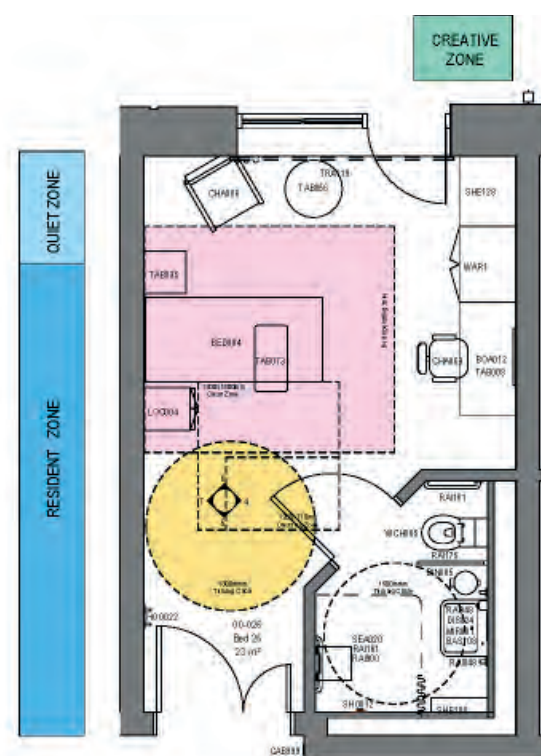
The doors are 1500mm wide, consisting of 910mm leaf and 590mm leaf, allowing for moving beds, furniture or hoists.

20 Bedrooms out of 80 have hoists fitted to the ceiling and the rest have the flexibility to incorporate the hoist in the future (structurally).

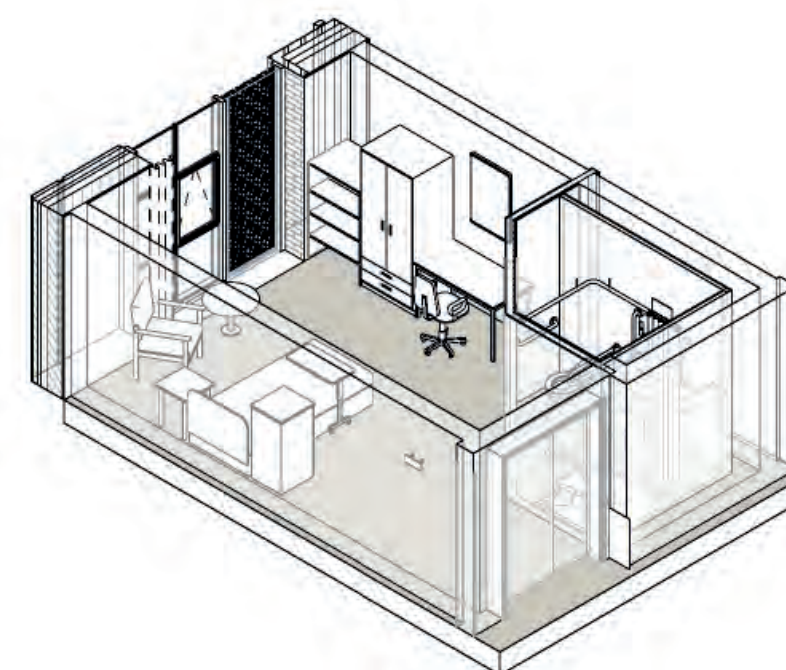
The bed position allows for direct view of the toilet, which is important for people with dementia, but the bedrooms are spacious enough to allow for multiple bed positions.

The room is spacious enough to allow for mobile hoists and wheelchairs, including the en-suite where 1500mm turning circle is allowed for.

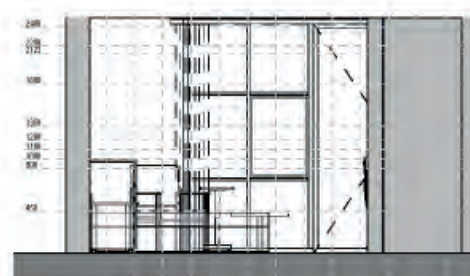
Every bedroom has openable windows at 800mm above ffl., fitted with restrictors and one full height openable window with a perforated panel in front of it. This will allow for ventilation, but will prevent anyone falling out.



PLAN



Typical Bedroom



ELEVATION A



ELEVATION B



ELEVATION C

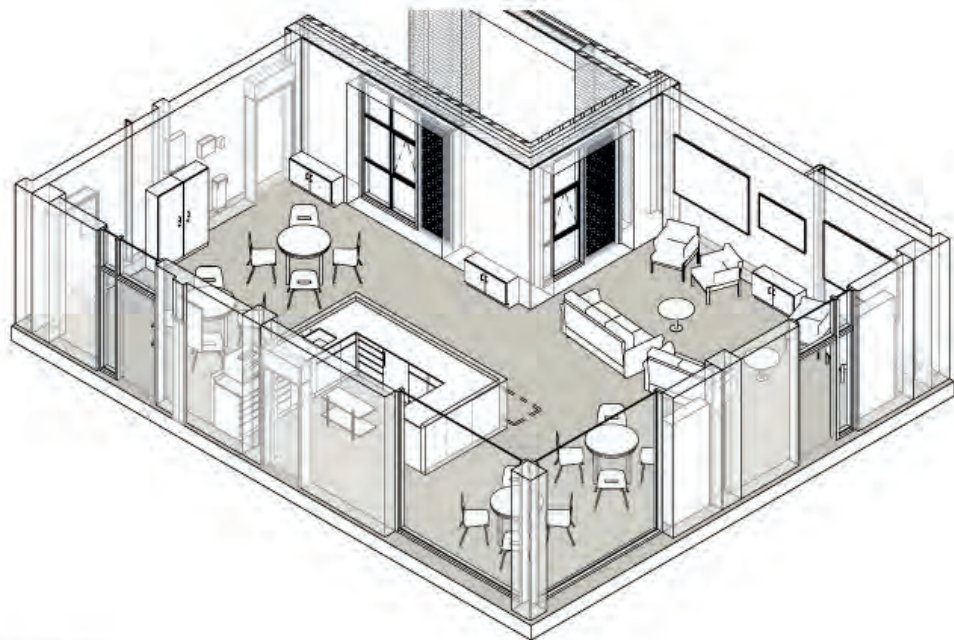
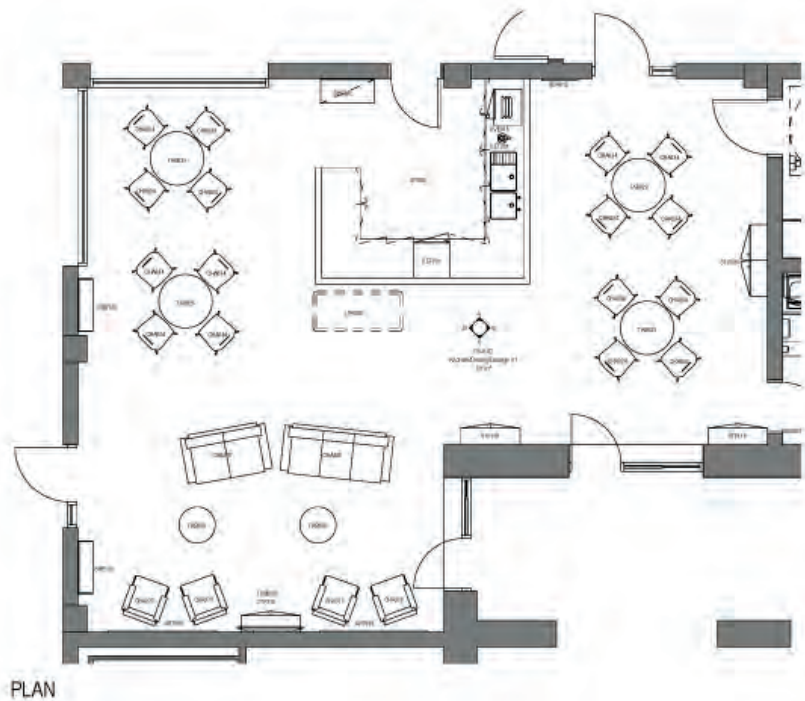


ELEVATION D

3.10 Communal Areas

At the heart of each household is a shared kitchen, dining and lounge area with direct access to a balcony or external patio. The aim is to provide a domestic environment which provides the residents with opportunities to engage in the activities of daily living. There is evidence that provision of small domestic kitchen for the residents can increase the interest in socializing, reducing the cognitive and physical decline and anxiety.

The drawings on this page depict a typical household with some accompanying precedent images.





3.11 Appearance and Materials

The architectural language of the Dementia Nursing Home development is modern and contemporary whilst reflecting the materiality seen within the area. The building uses a simple palette of materials - two tones of brick, close in tone and appearance to London Stock as well as metal cladding in golden colour to break up the massing and to add interest.

The windows are treated as a larger element set in within the metal cladding slightly inset from the brick face. The windows to bedrooms all have a feature screen to add further architectural interest, but also allowing for ventilation whilst preventing a person from falling out.

All households have direct access outside, either to a secure patio or a balcony. Balcony elements to the south of the building add variety and break the mass of the building, whilst providing a more crucial function in providing opportunities for horticulture and social gathering.

Boundary treatment to the building needs to be secure for the safety of the residents, but should not be closed up to the street. It is proposed that low brick wall and piers in the matching brick to the building, interspersed with metal screens matching the window panels are used as boundary treatments. Behind the fence a green hedging is proposed to make a softer edge to the local streetscape.



Blonde Brick Finish



Perforated PPC Aluminium Screens



PPC Aluminium Cladding RAL D2525 Golden Beach or similar



Darker Blond Brick Finish



Elevation Warwick Grove



Elevation Alpha Road



Elevation Brown's Road



Elevation to North Car Park