

Notes

Bailey Partnership is the trading name of Bailey Partnership (Consultants) LLP, a limited liability partnership registered in England and Wales No. OC420278.

This drawing is copyright and owned by Bailey Partnership (Consultants) LLP, and is for use on this project and site only unless contractually stated otherwise.

Responsibility is not accepted for errors made by others in scaling from this drawing. All construction information should be taken from figured dimensions only.

All other design team elements, where indicated, have been imported from the consultant's drawings and reference should be made to the individual consultant's drawings for exact setting out, size and type of component.

Discrepancies and / or ambiguities within this drawing, between it and information given elsewhere, must be reported immediately to the architect for clarification before proceeding.

All works are to be carried out in accordance with the latest British Standards and Codes of Practice unless specifically directed otherwise in the specification.

Responsibility for the reproduction of this drawing in paper form, or if issued in electronic format, lies with the recipient to check that all information has been replicated in full and is correct when compared to the original paper or electronic image. Graphical representations of equipment on this drawing have been coordinated, but are approximations only. Please refer to the Specifications and / or details for actual sizes and / or specific contractor construction information.

Ordnance Survey Paper Map Copying License number: 40006119

This original document is issued for the purpose indicated below and contains information of confidential nature. Further copies and circulation will be strictly in accordance with the confidentiality agreement under the contract.

© Bailey Partnership (Consultants) LLP: This document is issued for the party which commissioned it and for specific purposes connected with the captioned project only. It should not be relied upon by any other party or used for any other proprietary. We accept no responsibility for the consequences of this document being relied upon by any other party, or being used for any other purpose, or containing any error or omission which is due to an error or omission in data supplied to us by others.

SAFETY, HEALTH AND ENVIRONMENTAL INFORMATION
Refer to the relevant Construction (Design and Management) documentation where applicable.

It is assumed that all works on this drawing will be carried out by a competent contractor, working where appropriate to an approved method statement.

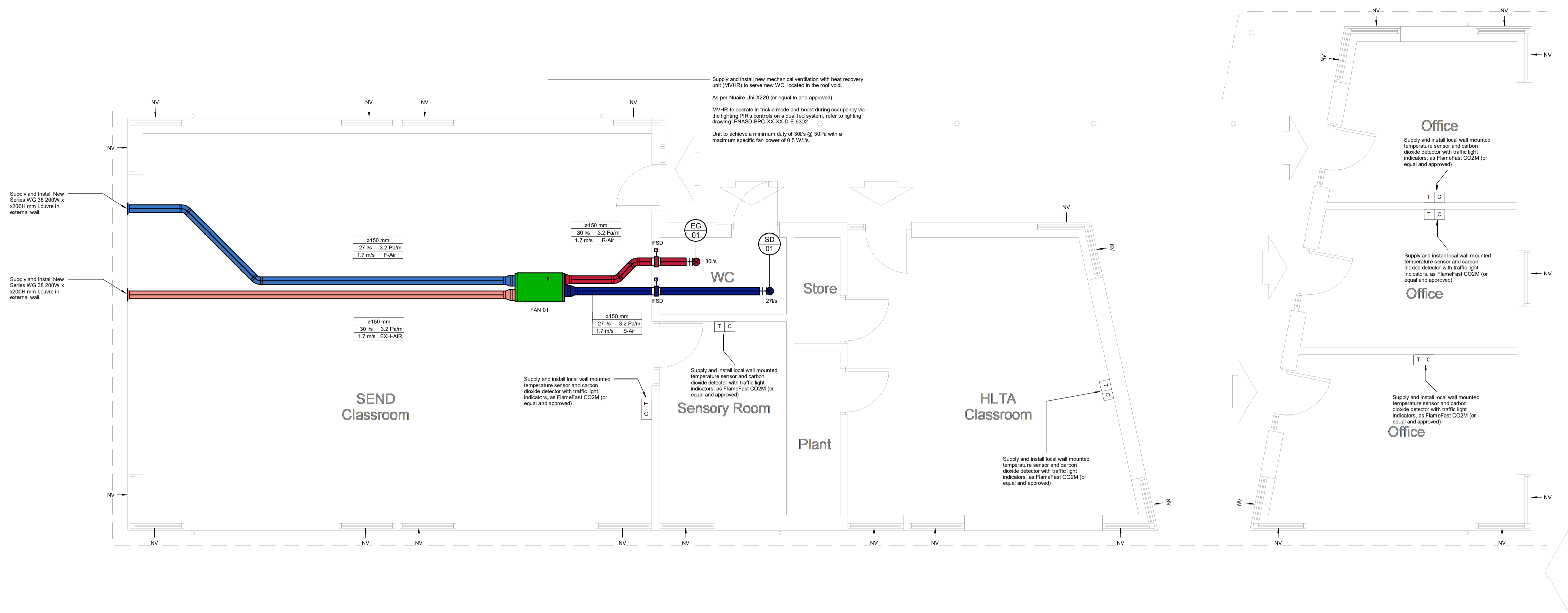
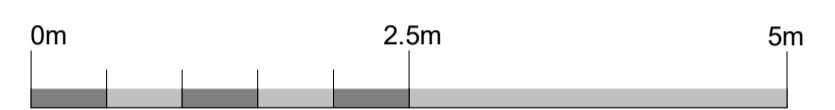
PROJECT NOTES

The Contractor shall ascertain the nature of the site, access thereto and all local conditions and restrictions likely to affect the installation. No claim will be considered on the grounds of the lack of site knowledge.

The Contractor shall be responsible for the final coordination of all new and existing services, with the building structure, architecture and fixed furniture and equipment.

The Contractor shall allow for all required changes in height and direction not identified on the drawing and the final setting out of all plant, equipment and services shall be agreed on site with the Engineer.

The Contractor shall be responsible for any temporary access or lifting equipment required to carry out the works



Air Terminal Schedule						
Equipment Type	Equipment Number	Manufacturer	Model	Flow	Size	Area Served
EG	01	Gilbert's Blackpool Ltd	Series GX 150mm	30.0 L/s	150	WC
SD	01	Gilbert's Blackpool Ltd	Series SX 150mm	27.0 L/s	150	WC

Symbol	Description
	External Louvre
	Supply Diffuser/Grille
	Extract Grille
	Attenuator
	Volume Control Damper
	Fire Damper/Fire & Smoke Damper (as denoted)
	Local User Controller
	Carbon Dioxide Sensor

Abbr.	Description
DTLL	Drop to Low Level
RTA	Rise to Above
RFB	Rise from Below
DTB	Down to Below
CV	Ceiling Void
AFFL	Above Finished Floor Level
CTA	Cross Talk Attenuator
PIR	Passive Infrared
VCD	Volume Control Damper
FD	Fire Damper
FSD	Fire & Smoke Damper
AHU	Air Handling Unit
DTG	Door Transfer Grille
R-Air	Return/Extract Air
EXH-Air	Exhaust/Discharge Air
F-Air	Fresh Intake Air
S-Air	Supply Air

Mechanical Ventilation General Notes:

1. Unless stated otherwise all ductwork services shall be colour coded, labelled and identified in accordance with BS 1710 detailing type of service, size and direction of flow.
2. All ductwork penetrations through fire rated walls and floors shall be fitted complete with a suitably sized fire damper to achieve the same fire rating as the structure, complete with access panel to allow resetting of the damper(s). Penetrations through fire compartmentation lines shall be made good by the Main Contractor and finished with intumescent sealant.
3. Unless stated otherwise all ductwork runs are to be fully insulated with performance foil faced rigid thermoset phenolic insulant to be as Kingspan Kooltherm FM Duct Insulation or equal and approved. The Contractor shall provide insulated pipe support inserts on circular ductwork. All ductwork is to be supported with suitable spaced approved fixings hung directly from the soffit or building structure. Under no circumstances shall the weight of the ductwork or grilles be transferred to the suspended ceiling or other services.
4. Where fans, ductwork, attenuators, dampers and other ancillaries mounted within risers, ceiling voids, or other spaces that are not directly accessible, the Contractor shall allow to provide suitably sized access panels to facilitate maintenance to the units. The finish of the access panels shall be to the architects specification.
5. Allow to provide in-duct attenuation as required to isolate noise breakout from fans into teaching areas.
6. The Contractor shall allow to provide suitable access hatches within all ductwork for inspection, cleaning and maintenance of ductwork, dampers and other ancillary equipment. Where duct runs are insulated the insulation and finish shall be adapted to allow sections to be to access hatches.
7. Flexible connections shall be used for final connection to grilles and kept to a maximum length of 600mm with no abrupt changes in direction.
8. All mechanical ventilation systems shall be commissioned by an approved reputable commissioning specialist to achieve the volumetric flow rates as detailed and shall be witnessed by the Engineer.
9. All equipment shall be installed in accordance with relevant manufacturers recommendations and accepted good practice.
10. All electrical works associated with the mechanical installation shall be carried out by the Electrical Contractor.
12. All ductwork to conform to DW/144.
13. Final location of all controllers to be confirmed.
14. Fire Smoke Damper recommended manufacturer is Swegon Actionaire. Contractor is responsible for ensure correct products is used and the following is a guide:
 - Fire Smoke Damper - Thermshield FDC

P02	Tender Issue	DJ/SC	26/02/24
P01	Draft Issue	DJ/CH	13/02/24
Rev	Description	By/Chk'd/App'd	Date



Client
Torbay Council

Project
Paignton Academy - SEND

Drawing Title
Ventilation Services
SEND - Ventilation Services

Suitability - Status Code S4	Suitability - Description TENDER	
Internal Project No. 35432	Scale @ A1 1:50	Revision P02

Drawing Identifier
Project Code - Originator - Function - Space - Form - Discipline - Number
PANSD - BPC - 02 - 00 - D - M - 5702