

LEGEND

- A
- RUNWAY LED 4K Linear luminaire by Dextra Lighting (Suspended @ 2.5m)  
Each length shall consist of 3x3m extrusions and 1x1.5m extrusion. Allow 1 emergency module per length
- B
- RUNWAY LED 4K Linear luminaire C/W R25c by Dextra Lighting (Flush Mounted)
- C
- RUNWAY LED 4K Linear luminaire C/W R25c by Dextra Lighting (Surface Mounted)
- D
- EPK LED by Dextra Lighting 5ft
- E
- DENOTES EMERGENCY TYPE with 3 hours integral emergency pack
- F
- Aimed LED 4000K Surface mounted luminaire By Dextra Lighting (White)
- G
- REALIA MICRO LED by Thorlux lighting
- J
- LED 4 Emergency corridor luminaire by Dextra Lighting
- K
- Mirror light by Syvonia 0053400
- L
- 1 GANG LIGHT SWITCH
- M
- 1 GANG 2 WAY LIGHT SWITCH
- N
- RETRACTIVE SWITCH FOR DSJ DIMMING
- O
- 3 HOUR NON MAINTAINED SIGN LIGHT
- P
- EXIT
- Q
- TRIPLE POLE ISOLATOR FOR EXTRACTOR FAN, INCLUDE FOR VENT AXIA SILHOUETTE 100 TM (PIR/TIMER) AND 100MW CORE CUT HOLE AND EXT. GRILL
- R
- MAINTAINED COMPANY SIGN LIGHT ON LANDLORDS SUPPLY VIA TIMECLOCK
- S
- SIGN

NOTES

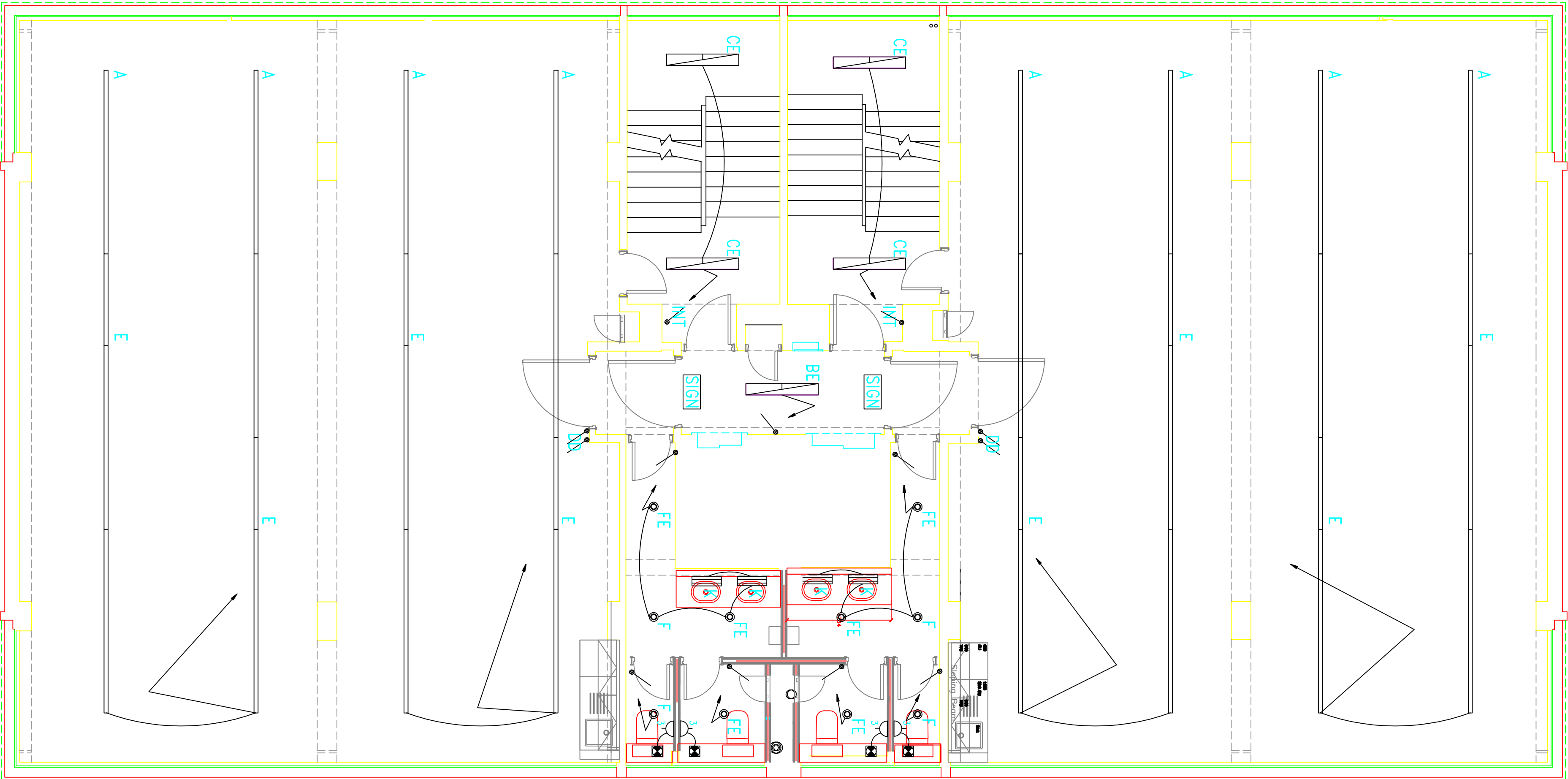
These drawings shall be read in conjunction with the "Electrical Specification" by Kosiek Ltd

The contractor will be required to visit site prior to the submission of their tender documents. No additional costs will be accepted due to the contractor's failure to carry out the specified pre-tender survey. All items shown or noted on these drawings, together with the specification shall be included within the tendered sum

The contractor shall note that each office space and adjacent W/C shall be fed via the local distribution board in that area. Common areas such as stair wells landings entrance hall shall be supplied from the Landlords board.

All wiring shall be contained in galvanised steel conduit mounted flush behind new plasterboard ceilings and partitions. Surface mounted on existing brick work.

Before any materials are ordered or installation work commenced, the contractor shall put forward their containment proposals for discussion



Item#	Quantity	Title/Name, designation, material, dimension etc	Article No./Reference
Designed by Ben Jones	Checked by bj	Approved by - date N/A	Scale 1:50 @ A1
Rosiek Ltd		Dwg No. 17020-T-216	Edition 1/1
2nd Floor Lighting Layout			