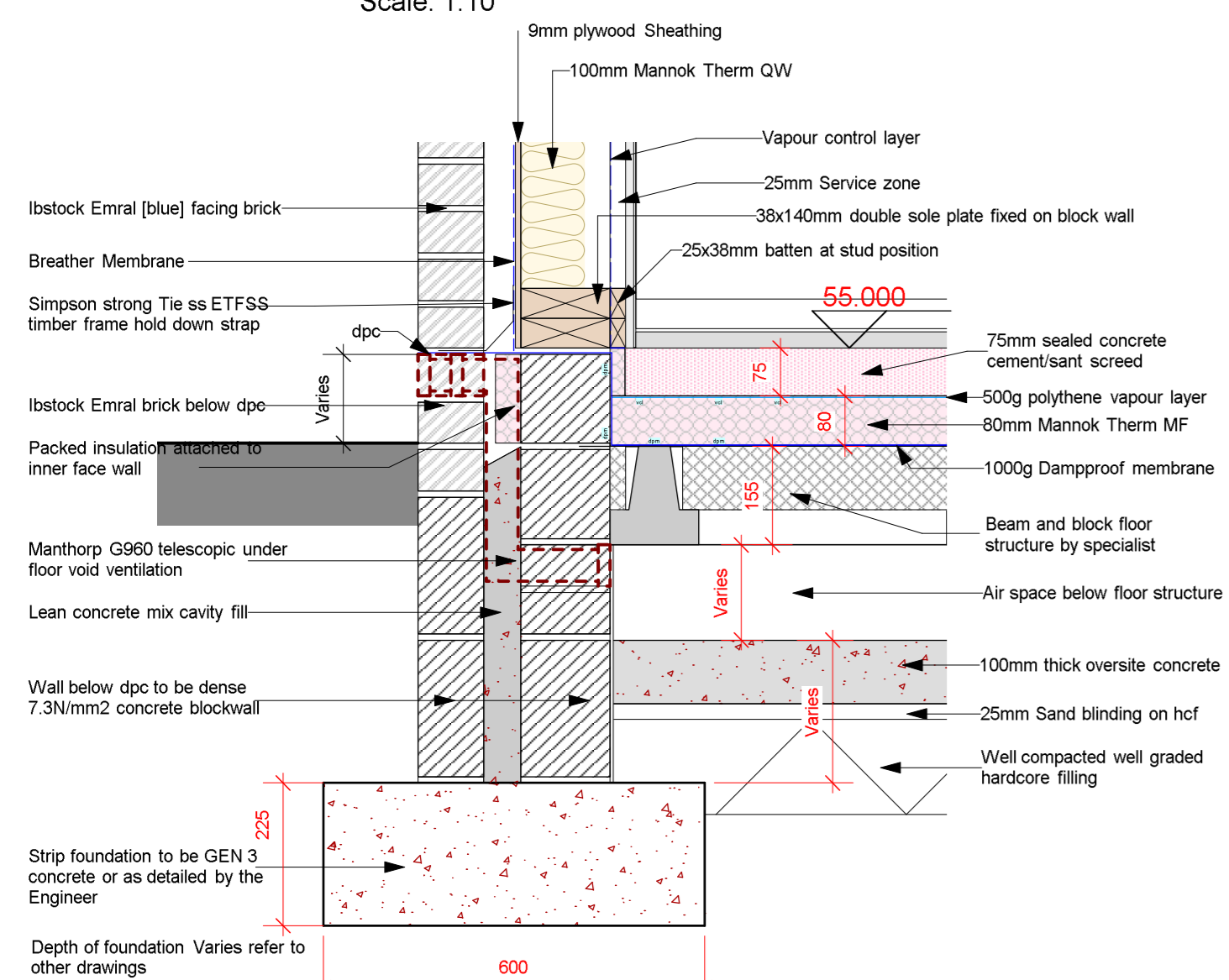
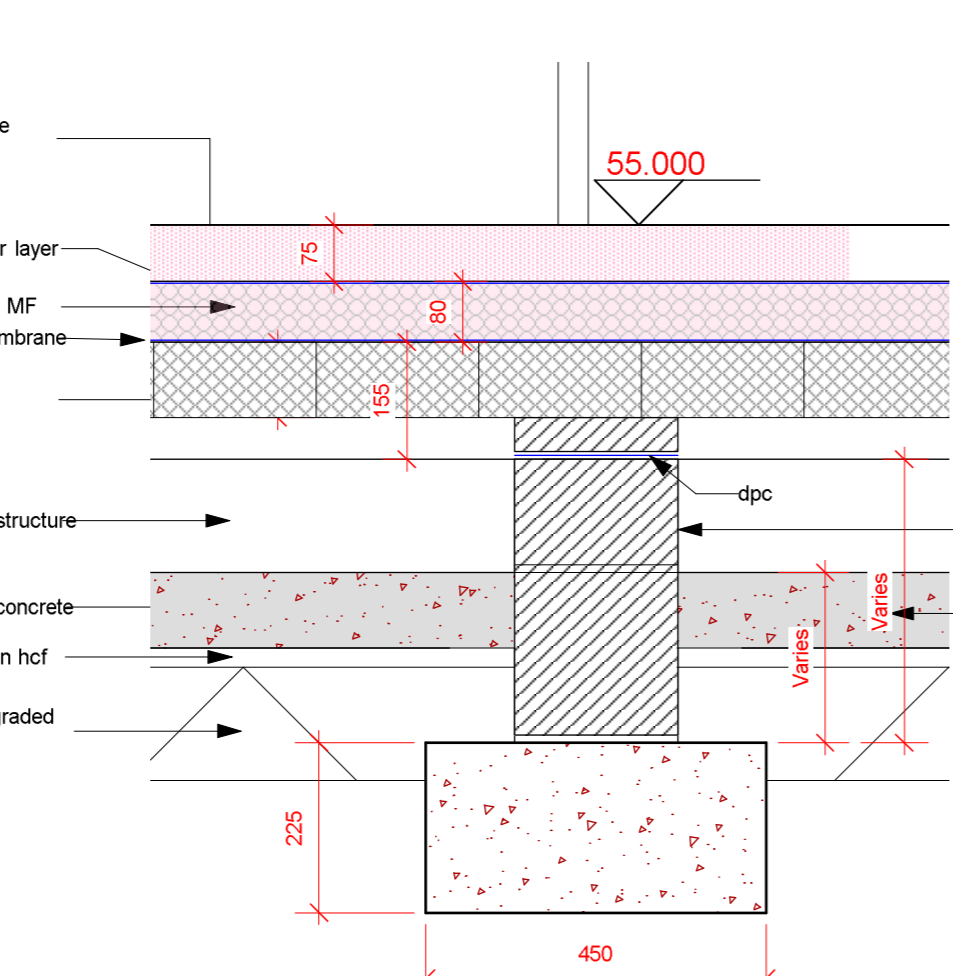


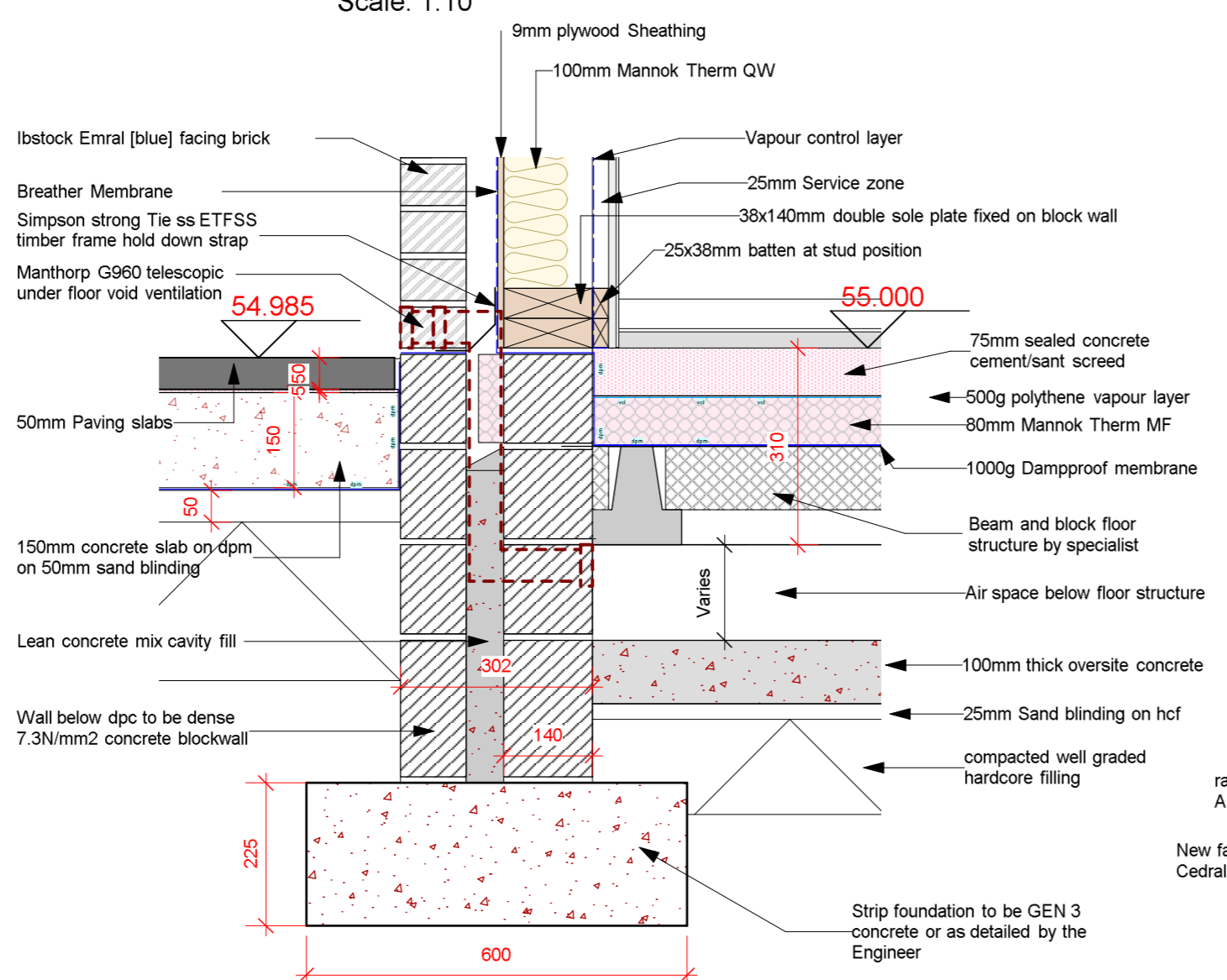
**[DETAIL 10]**  
Scale: 1:10



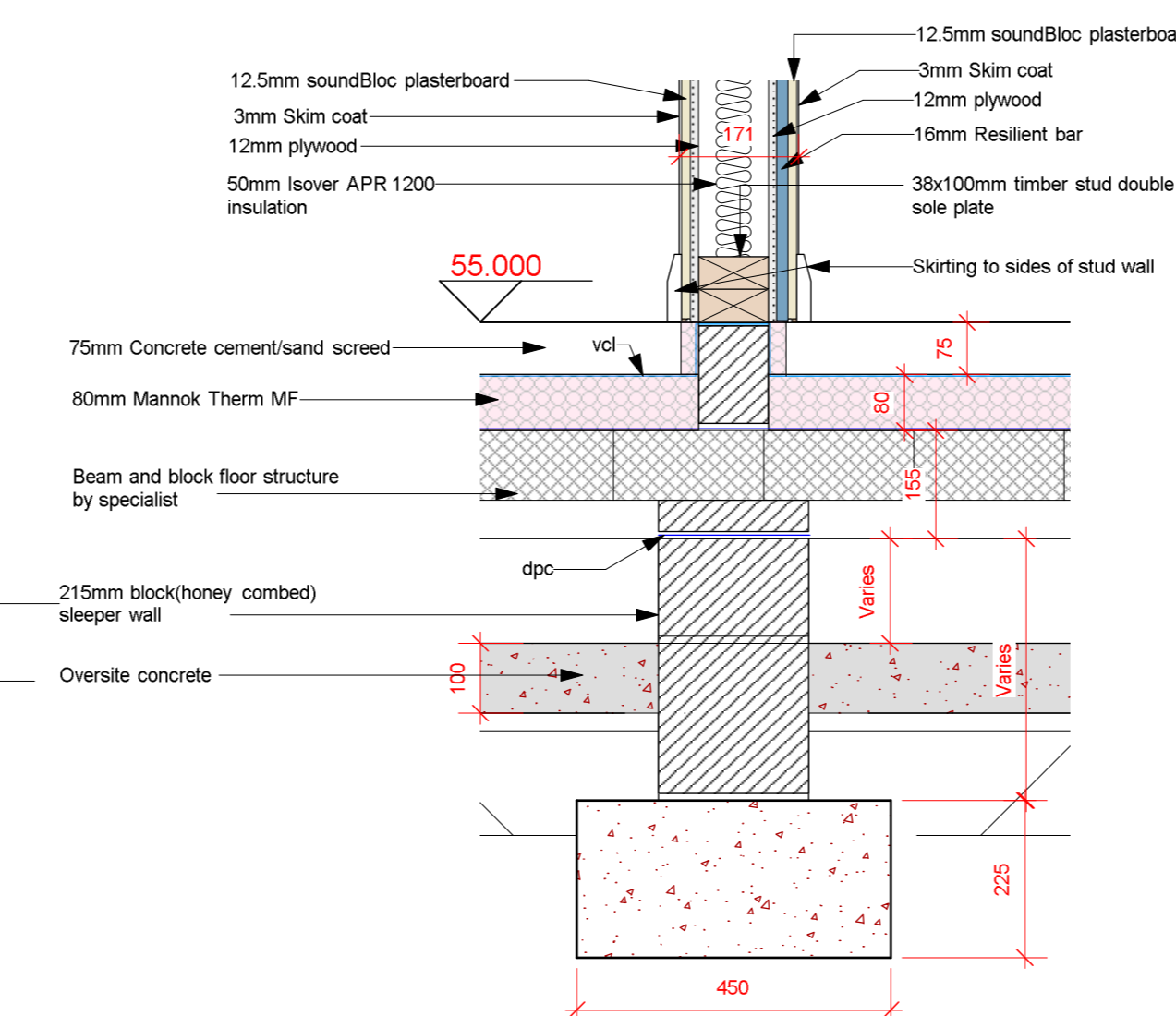
**[DETAIL 08]**  
Scale: 1:10



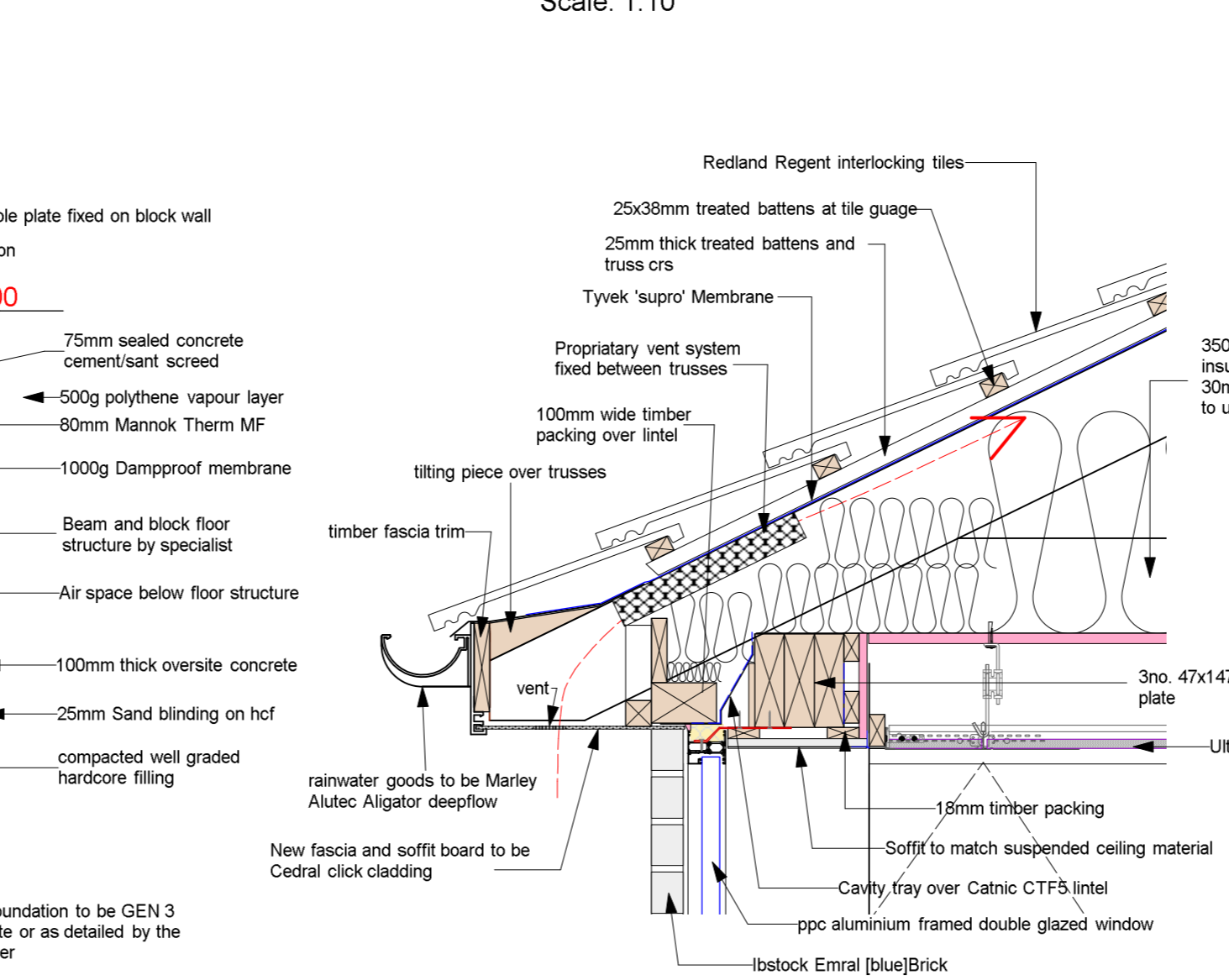
**[DETAIL 11]**  
Scale: 1:10



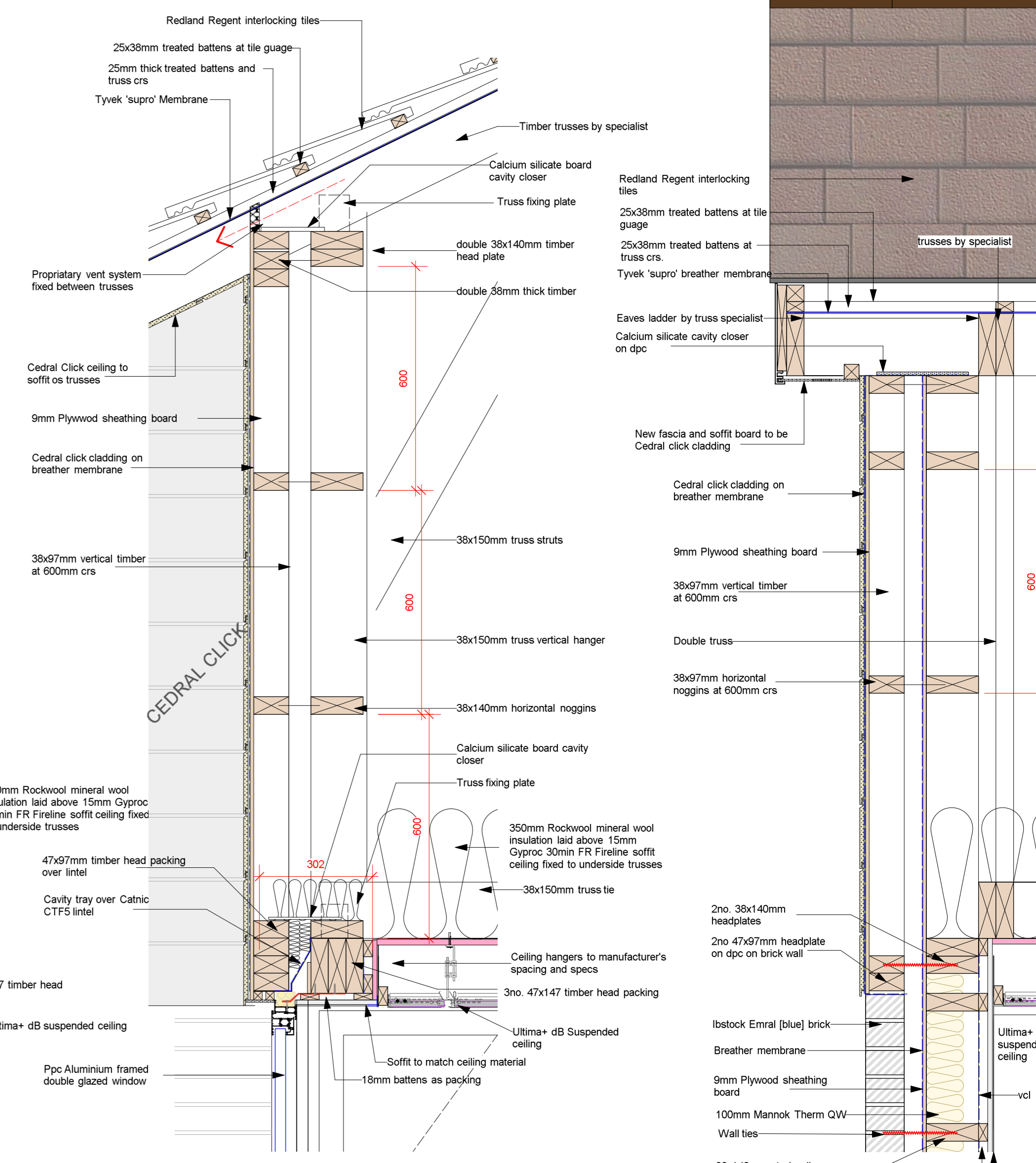
**[DETAIL 09]**  
Scale: 1:10



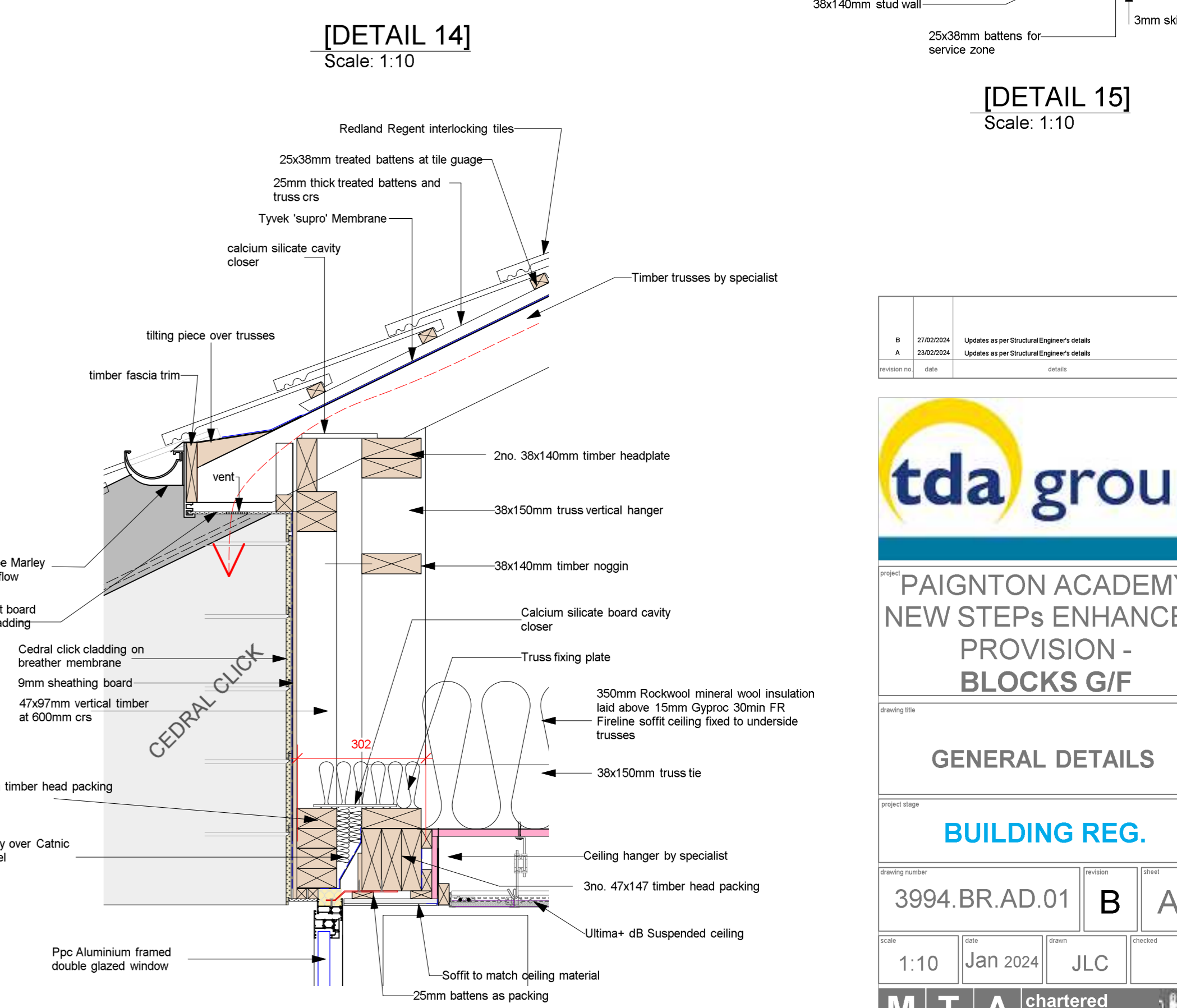
**[DETAIL 12]**  
Scale: 1:10



**[DETAIL 13]**  
Scale: 1:10



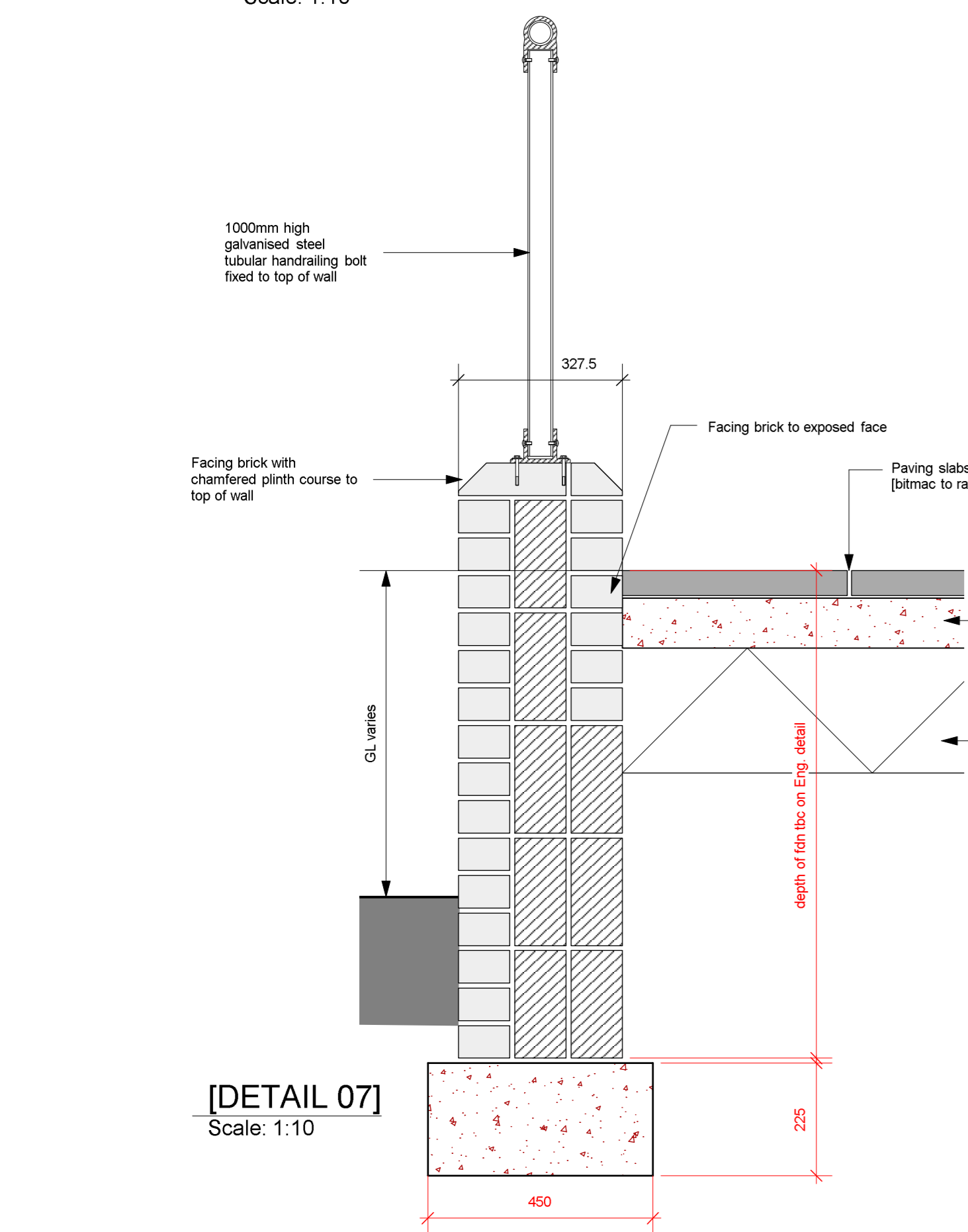
**[DETAIL 14]**  
Scale: 1:10



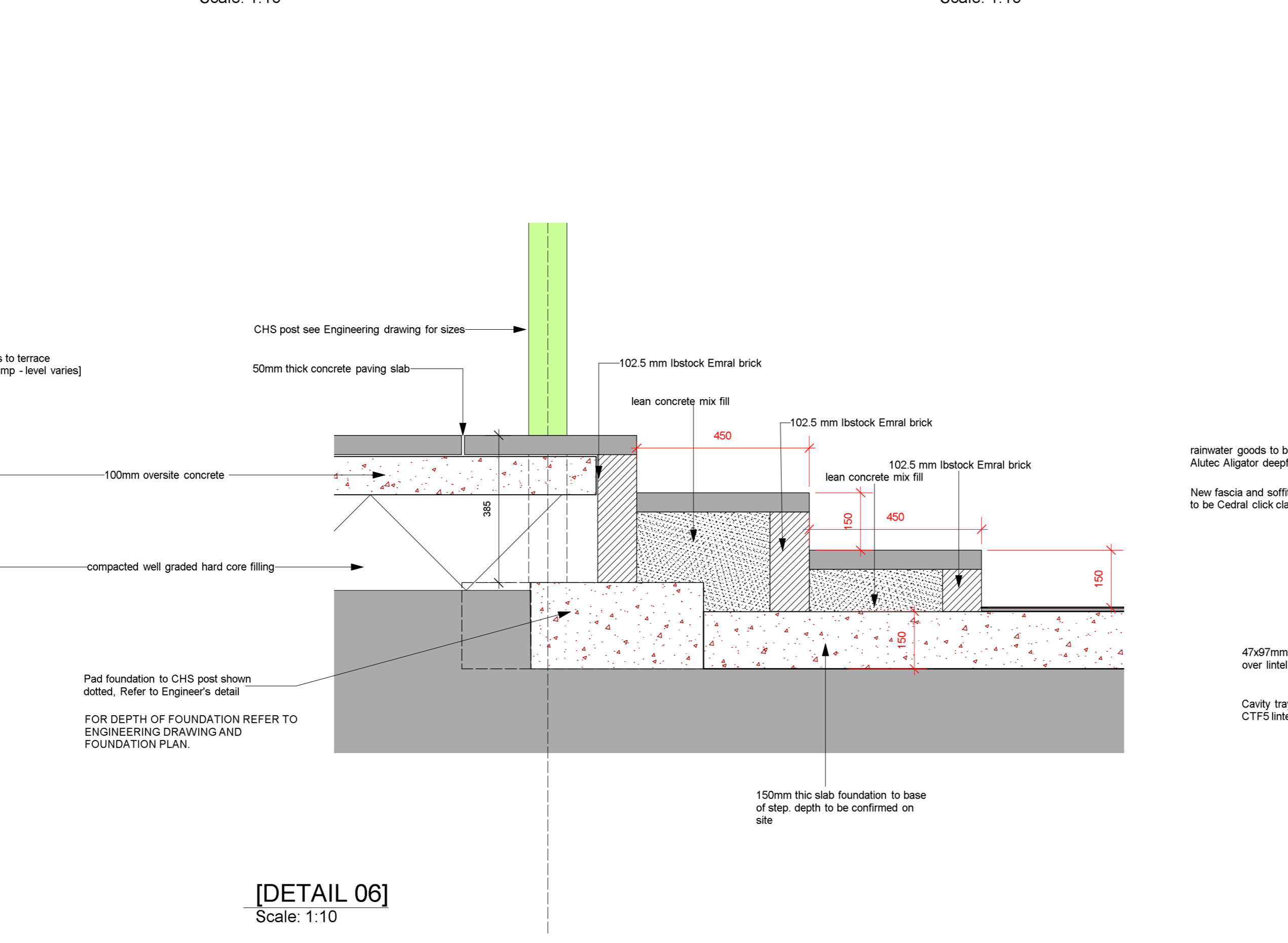
**[DETAIL 15]**  
Scale: 1:10



**[DETAIL 16]**  
Scale: 1:10



**[DETAIL 07]**  
Scale: 1:10



**[DETAIL 06]**  
Scale: 1:10

B	21620004	Updates as per Structural Engineer's details	see
A	23400004	Updates as per Structural Engineer's details	see
revision no.	date	details	status

**tda group**

PROJECT: PAIGNTON ACADEMY  
NEW STEPS ENHANCED  
PROVISION -  
BLOCKS G/F

DRAWING TITLE: GENERAL DETAILS

PROJECT REF: BUILDING REG.

DRAWING NUMBER: 3994.BR.AD.01

DATE: 1:10  
DATE: Jan 2024  
DRAWN: JLC  
CHECKED: A1

**MTA** chartered architects

MTA Chartered Architects Ltd. 52 Fore Street Brixham Devon TQ5 8DZ  
Tel: 01803 851010  
01803 854807  
e-mail: enquiries@mtaarchitects.co.uk  
web: www.mtaarchitects.co.uk

This drawing is the Copyright of MTA Chartered Architects Ltd.