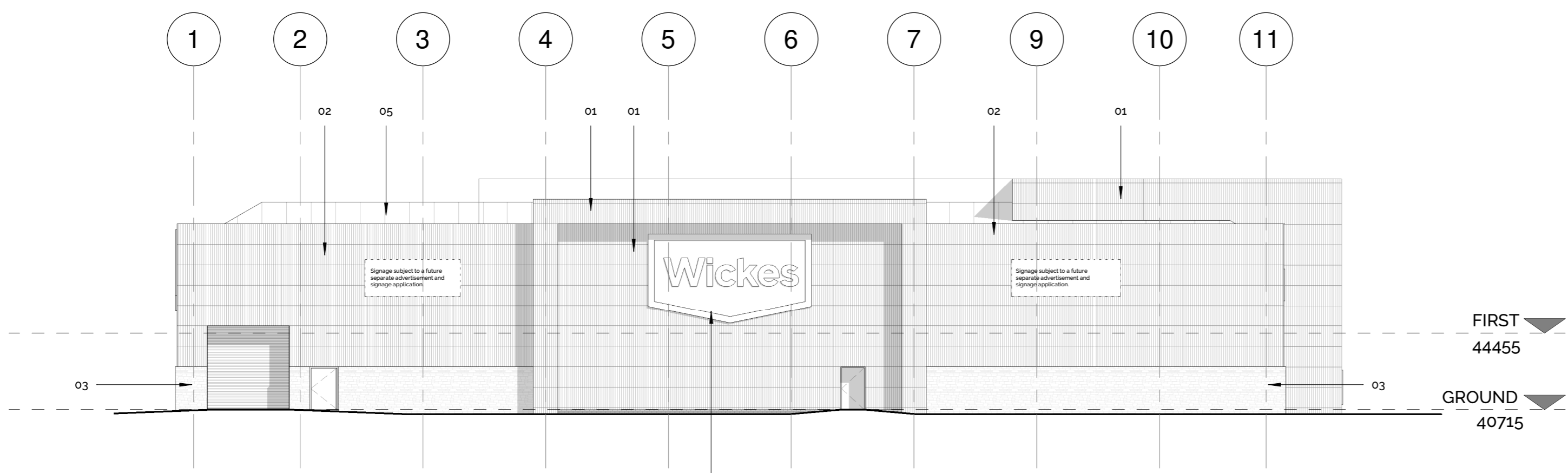
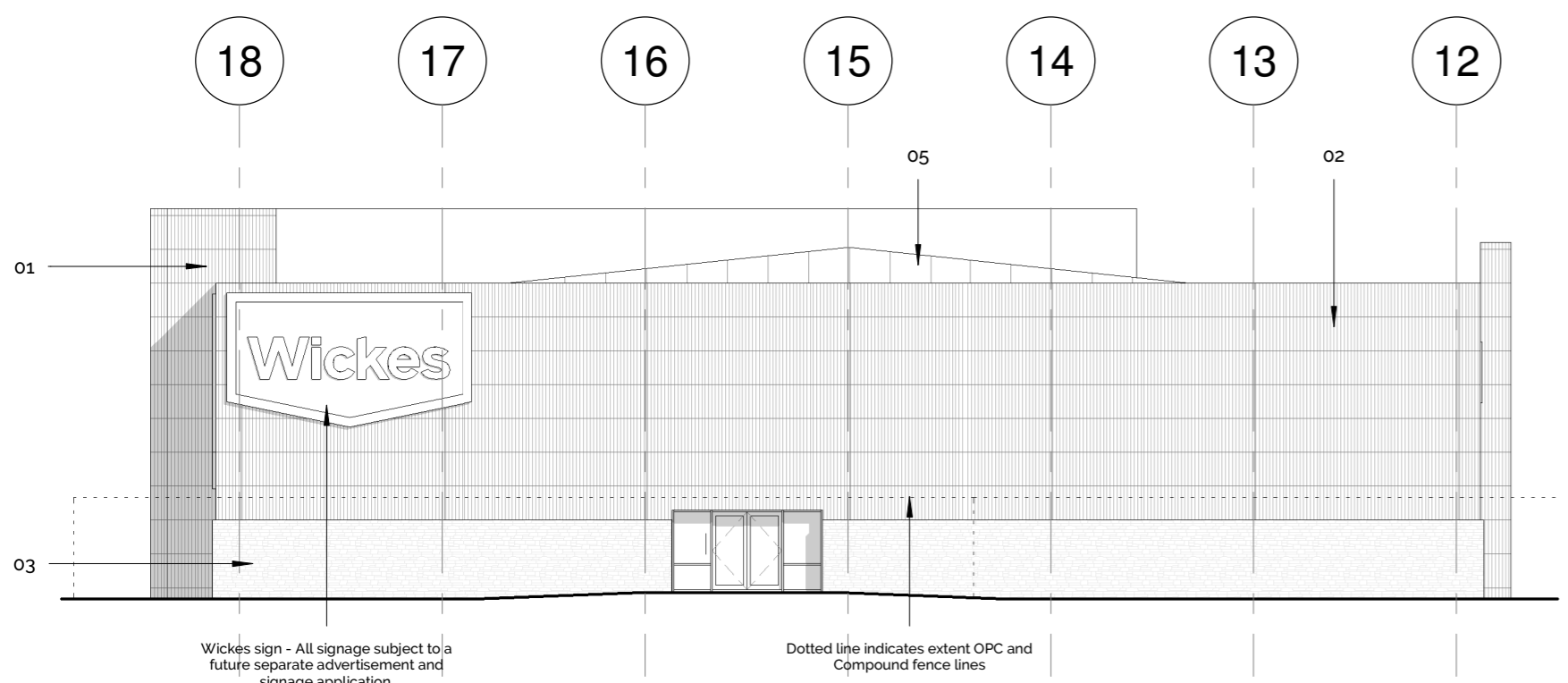


Contractors to check all dimensions on drawings.  
 Any discrepancies must be reported to KTA Architects Ltd or the contract administrator before proceeding.  
 Do not scale except for planning purposes, work to figured dimensions.  
 This drawing must be read in conjunction with all relevant consultants drawings.  
 This drawing is © KTA Architects Ltd.

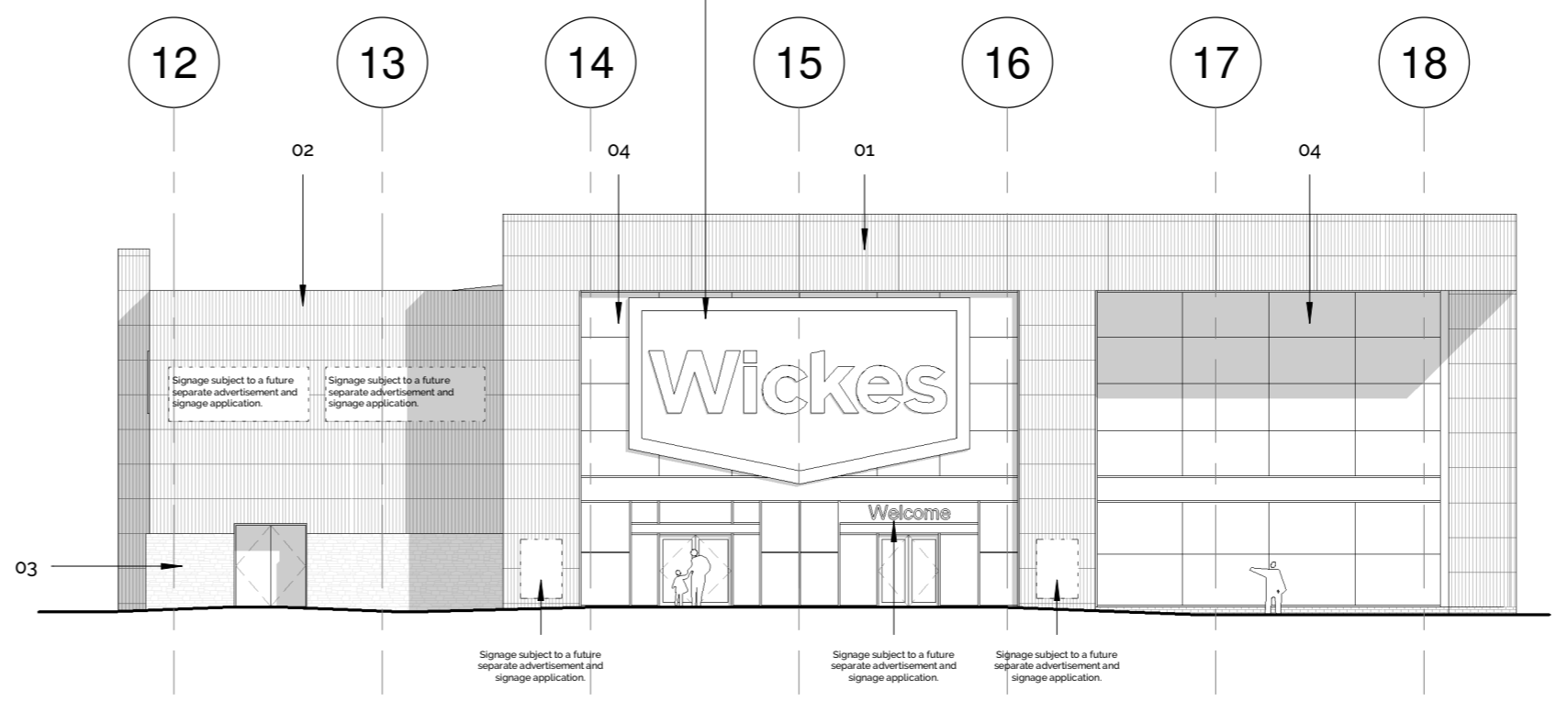
Revision Schedule			
Revision Number	Revision Date	Revision Description	Issued/ Authorised by
P7	MARCH 2021	PLANNING ISSUE - Personnel door added	MC/AC
P6	MARCH 2021	PLANNING ISSUE	MC/AC
P5	FEB 2021	DRAFT PLANNING ISSUE	MC/AC
P4	FEB 2021	DRAFT - FOR SIGN OFF	MC/AC
P3	FEB 2021	DRAFT ISSUE	MC/AC
P2	NOV 2020	DRAFT ISSUE - STAIRS MOVED OUTSIDE ENVELOPE - SIDE WINDOWS REMOVED	MC/AC
P1	OCT 2020	DRAFT ISSUE - FOR DISCUSSION ONLY	MC/AC



South West Elevation  
1 : 200



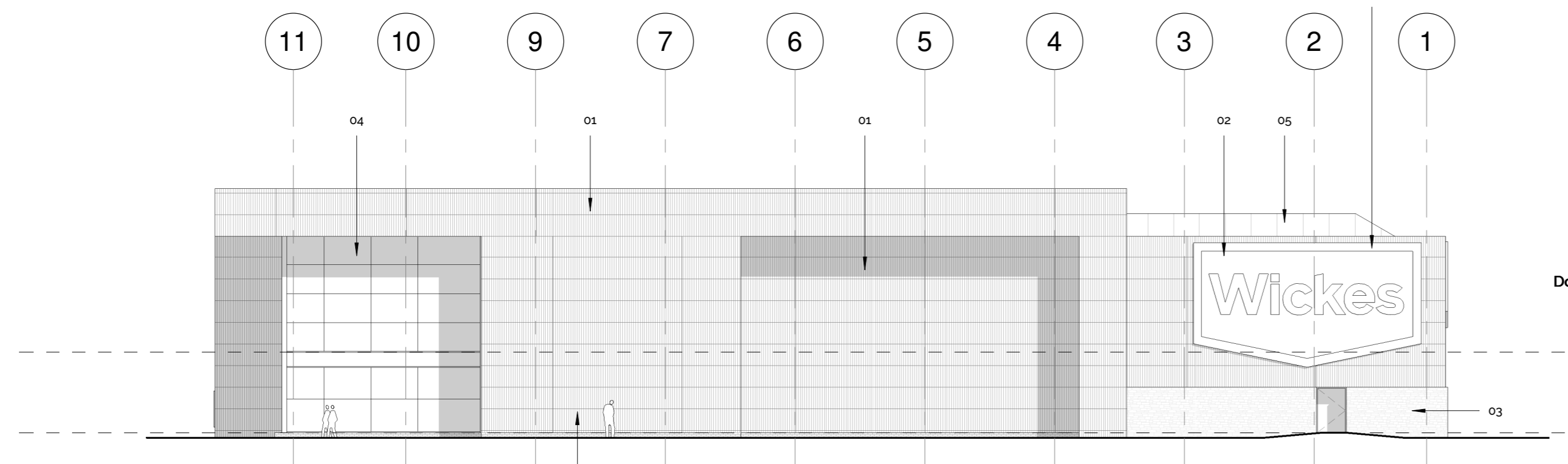
North West Elevation  
1 : 200



South East Elevation  
1 : 200

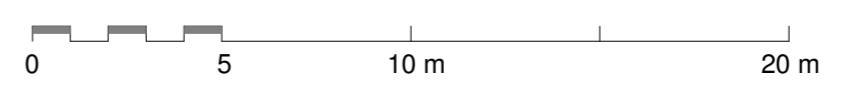
**Materials Schedule**

- 01.** Tata Steel Trimapanel® micro rib insulated panel system - Midnight blue RAL 5008
- 02.** Tata Steel Trimapanel® micro rib insulated panel system - Albatross Grey
- 03.** Stone - Yennadon Stone or similar (To match local context along Edginswell Lane)
- 04. Glazing** - Midnight blue RAL 5008
- 05.** Tata Steel Trisomet® insulated roof panel - Albatross Grey
- Brick plinth.** Denton Sahara Buff
- Doors.** In either Midnight blue RAL 5008 or - Albatross Grey to suit location



North East Elevation  
1 : 200

External Stair Core



**PLANNING ISSUE**



Kensington Court, Woodwater Park, Pynes Hill, Exeter, EX2 5TY  
 Tel: 01392 360338  
 Email: kt@kta.uk.com  
 Web: www.kta.uk.com

Project  
**Edginswell, Proposed Retail Unit**

Title  
**Proposed Elevations**

PLANNING Author MC Checked by AC

Date 26/03/2021 09:22:34 Scale As indicated @ A2

Project 2047 Status Pre Construction

Drawing number  
**WE-KT-XX-XX-DR-A-2047-SK200-So-P7**