

REMOVE TARP EDGES

DO NOT SCALE

IF IN DOUBT

A

B

C

D

E

F

SECTION A-A

SECTION B-B

SECTION C-C

SECTION B-B

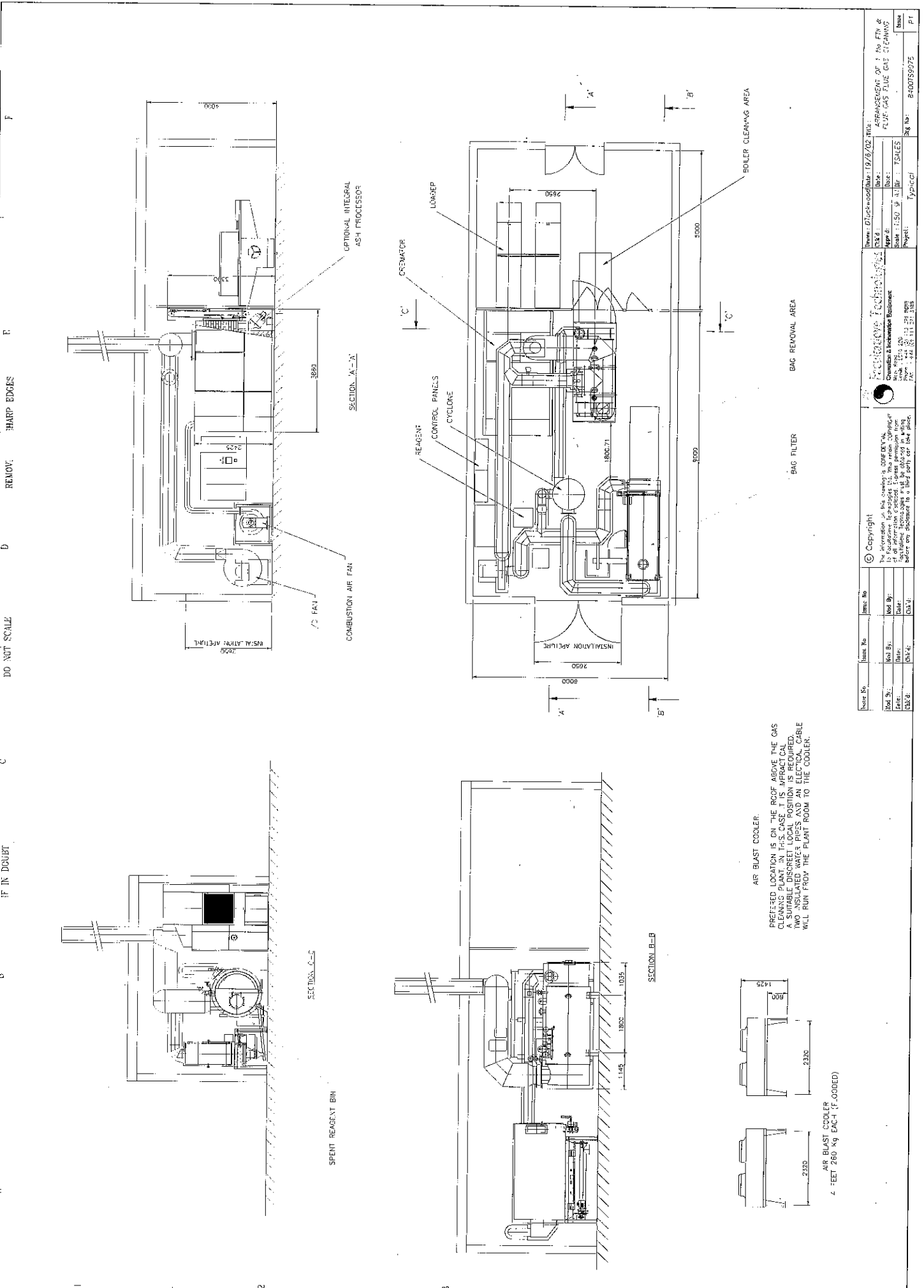
AIR BLAST COOLER.  
 PREFERRED LOCATION IS ON THE ROOF ABOVE THE GAS  
 CLEANING PLANT. IN THIS CASE IT IS IMPRACTICAL.  
 A S-1 TABLE D SOCKET LOCAL POSITION IS REQUIRED.  
 NO INSULATED WATER PIPES AND AN ELECTRICAL CABLE  
 WILL RUN FROM THE PLANT ROOM TO THE COOLER.

AIR BLAST COOLER  
 4 FEET 260 KG EACH (FLOODED)

Issue No:	Issue No:	Issue No:	Issue No:
Rev. By:	Rev. By:	Rev. By:	Rev. By:
Date:	Date:	Date:	Date:
Proj.:	Proj.:	Proj.:	Proj.:

Copyright ©  
 The information on this drawing is CONFIDENTIAL  
 and is the property of the Engineering Department  
 of all information disclosed. It is not to be  
 used for any other purpose without written  
 authority. Breach of this condition may result in  
 legal action.

Drawn: D. Duckworth Date: 19/06/02 Title: ARRANGEMENT OF 1 NO. FTW & FLUE GAS CLEANING  
 Scale: 1:50 @ A1 Size: 1:50  
 Project: 84/0075907/5  
 Issue: 01



A B C D E F

IF IN DOUBT

DO NOT SCALE

REMOVE SHARP EDGES

SECTION A-A

SECTION B-B

SECTION C-C

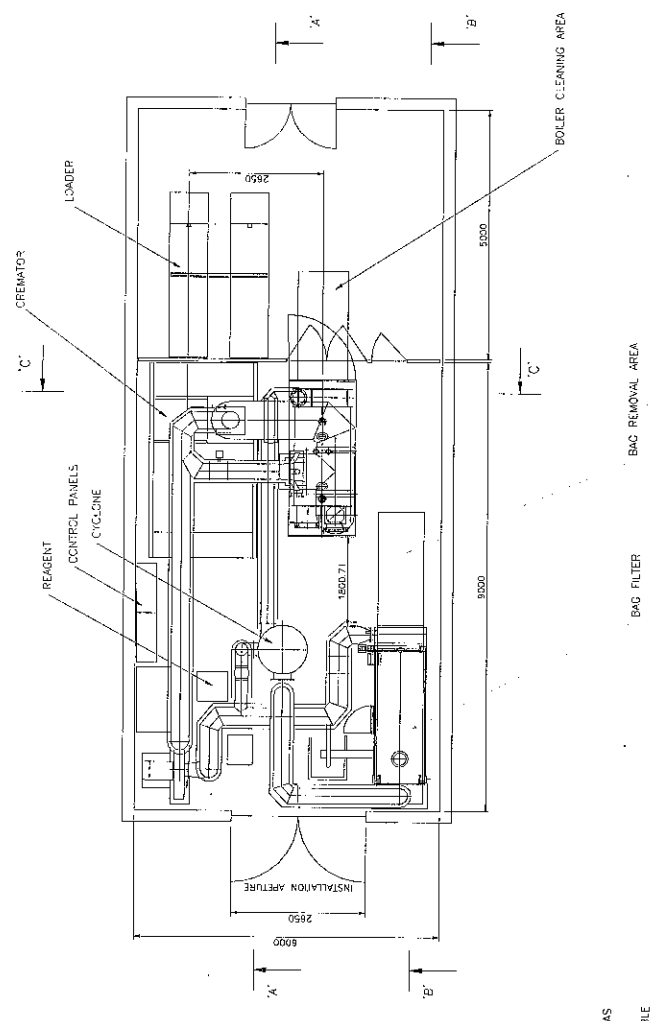
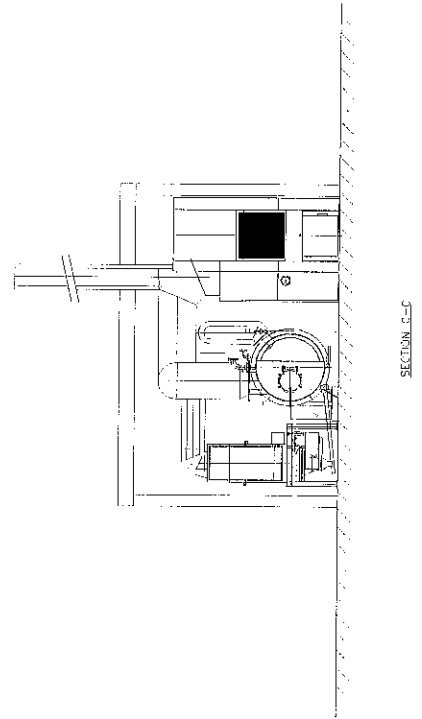
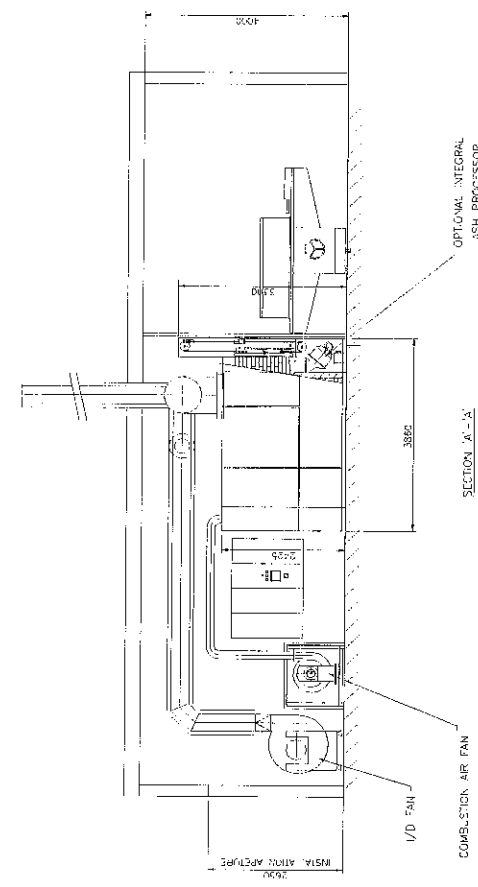
SECTION D-D

AIR BLAST COOLER

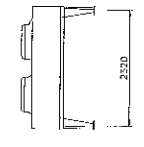
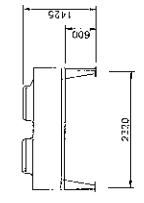
PREFERRED LOCATION IS ON THE ROOF ABOVE THE GAS CLEANING PLANT. IN THIS CASE, IT IS PRACTICAL A SUITABLE DISCREET LOCAL POSITION IS REQUIRED. TWO DOWN TAKE OFFS AND AN ELECTRICAL CABLE WILL RUN FROM THE PLANT ROOM TO THE COOLER.

AIR BLAST COOLER  
4 - FEET 260 Kg EACH (F.000ED)

Issue No:	Issue No:	Issue No:	Issue No:	Issue No:	Issue No:
Rev. A:	Rev. B:	Rev. C:	Rev. D:	Rev. E:	Rev. F:
Date:	Date:	Date:	Date:	Date:	Date:
Drawn:	Drawn:	Drawn:	Drawn:	Drawn:	Drawn:
Checked:	Checked:	Checked:	Checked:	Checked:	Checked:
Scale:	Scale:	Scale:	Scale:	Scale:	Scale:
Project:	Project:	Project:	Project:	Project:	Project:
<p>© Copyright The information in this drawing is CONFIDENTIAL and is the property of the Engineering Department of the Client. It is not to be used in writing or otherwise for any purpose other than that for which it was prepared.</p>					
<p>Engineering Department 100, Victoria Road, Victoria, Australia Tel: +61 3 9594 1111 Fax: +61 3 9594 1112</p>					
<p>Issue: 19/02/02 Rev: 01 Scale: 1:50 Project: 240059075 Sheet: 1 of 1</p>					



AIR BLAST COOLER.  
 PREFERRED LOCATION IS ON THE ROOF ABOVE THE GAS  
 CLEANING PLANT IN THIS CASE. IF PRACTICAL,  
 A SUITABLE "DISCREET" LOCAL POSITION IS REQUIRED.  
 TWO INSULATED WATER PIPES AND AN ELECTRICAL CABLE  
 WILL RUN FROM THE PLANT ROOM TO THE COOLER.



AIR BLAST COOLER  
 4 FEET 260 kg EACH (FLUCCED)

DO NOT SCALE

ART FRAMES REMOVE

Issue No.	Issue No.	Issue No.	Issue No.	Issue No.	Issue No.	Issue No.
Rev. B:	Rev. A:	Rev. 1:	Rev. 1:	Rev. 1:	Rev. 1:	Rev. 1:
Issue:	Date:	Date:	Date:	Date:	Date:	Date:
CSG	CSG	CSG	CSG	CSG	CSG	CSG

Copyright		Drawn: DUK	Checked: DJL	Issue No.
No information in this drawing is to be considered as a guarantee of performance or liability by the manufacturer. The manufacturer shall not be liable for any loss or damage, howsoever caused, in connection with the use of the equipment described herein.		Cameron & International Equipment 1200 120th Ave. Suite 1200 Oakville, ON L4W 1G4 Tel: 905.836.1144 Fax: 905.836.1144		Page No.
The information in this drawing is the property of Cameron & International Equipment. It is to be used only for the project and equipment specified herein and is not to be distributed to third parties without the written consent of Cameron & International Equipment.		Project:	Type/Code:	Rev. No.
		Project: 150 @ All	Type/Code: 15ULES	Rev. No. 9400789275
		Project:	Type/Code:	Rev. No. 9400789275
		Project:	Type/Code:	Rev. No. 9400789275