

Notes

Bailey Partnership is the trading name of Bailey Partnership (Consultants) LLP, a limited liability partnership registered in England and Wales No. OC420278.

This drawing is copyright and owned by Bailey Partnership (Consultants) LLP, and is for use on this project and site only unless contractually stated otherwise.

Responsibility is not accepted for errors made by others in scaling from this drawing. All construction information should be taken from figured dimensions only.

All other design team elements, where indicated, have been imported from the consultant's drawings and reference should be made to the individual consultant's drawings for exact setting out, size and type of component.

Discrepancies and / or ambiguities within this drawing, between it and information given elsewhere, must be reported immediately to the architect for clarification before proceeding.

All works are to be carried out in accordance with the latest British Standards and Codes of Practice unless specifically directed otherwise in the specification.

Responsibility for the reproduction of this drawing in paper form, or if issued in electronic format, lies with the recipient to check that all information has been replicated in full and is correct when compared to the original paper or electronic image. Graphical representations of equipment on this drawing have been coordinated, but are approximations only. Please refer to the Specifications and / or details for actual sizes and / or specific contractor construction information.

Ordnance Survey Paper Map Copying License number: 40006119

This original document is issued for the purpose indicated below and contains information of confidential nature. Further copies and circulation will be strictly in accordance with the confidentiality agreement under the contract.

© Bailey Partnership (Consultants) LLP: This document is issued for the party which commissioned it and for specific purposes connected with the captioned project only. It should not be relied upon by any other party or used for any other purposes. We accept no responsibility for the consequences of this document being relied upon by any other party, or being used for any other purpose, or containing any error or omission which is due to an error or omission in data supplied to us by others.

SAFETY, HEALTH AND ENVIRONMENTAL INFORMATION
Refer to the relevant Construction (Design and Management) documentation where applicable.

It is assumed that all works on this drawing will be carried out by a competent contractor, working where appropriate to an approved method statement.

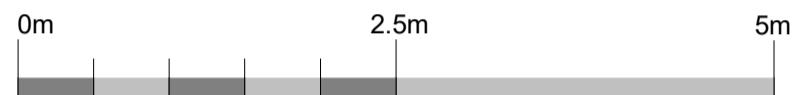
PROJECT NOTES

The Contractor shall ascertain the nature of the site, access thereto and all local conditions and restrictions likely to affect the installation. No claim will be considered on the grounds of the lack of site knowledge.

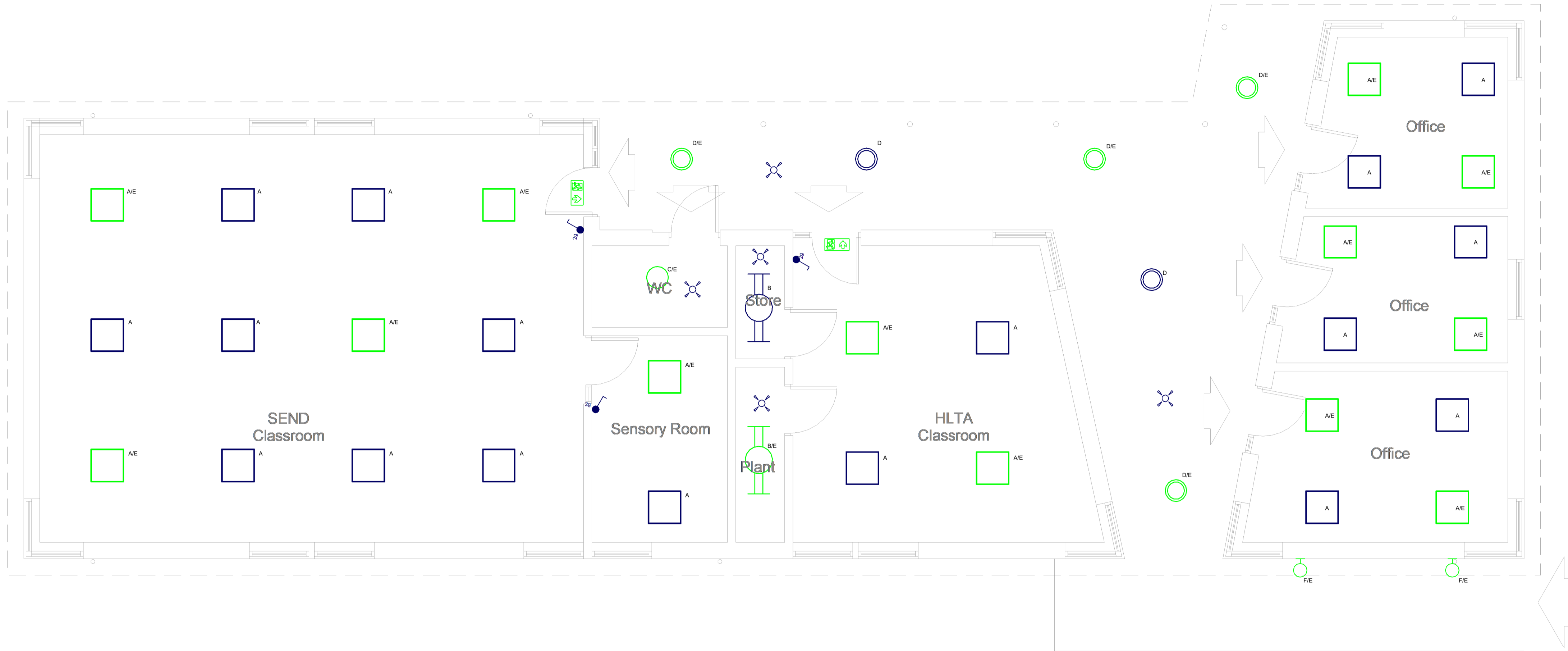
The Contractor shall be responsible for the final coordination of all new and existing services, with the building structure, architecture and fixed furniture and equipment.

The Contractor shall allow for all required changes in height and direction not identified on the drawing and the final setting out of all plant, equipment and services shall be agreed on site with the Engineer.

The Contractor shall be responsible for any temporary access or lifting equipment required to carry out the works



Scale 1:50



Symbol	Description
	600x600 Recessed fitting as Tamlite MODLED LG 32W
	Surface Lighting fitting as Tamlite Cyclone P 29W.
	Circular Recessed fitting as Tamlite Astro 20W.
	Circular Surface fitting as Tamlite Solar L 19W.
	Wall Mounted fitting as Tamlite City WL T4 19W in black
	Pendant fitting as Tamlite Gemini 20W
	Emergency EXIT sign as Tamlite Elite Blade
/E	Denotes Emergency luminaire C/W emergency lighting battery pack and control gear
	PIR Detector, ceiling
	Switch 2Gang OneWay

P02	Tender Issue	CH/MS/C	26/02/24
P01	Draft Issue	CH/L	13/02/24
Rev	Description	By/Chk'd/App'd	Date



Client
Torbay Council

Project
Paignton Academy - SEND

Drawing Title
**Lighting & Emergency Lighting
SEND - Lighting**

Suitability - Status Code	Suitability - Description	
S4	TENDER	
Internal Project No.	Scale @ A1	Revision
35432	1:50	P02

Drawing Identifier
Project Code - Originator - Function - Space - Form - Discipline - Number
PANSD - BPC - 02 - 00 - D - E - 6302