

NEC4

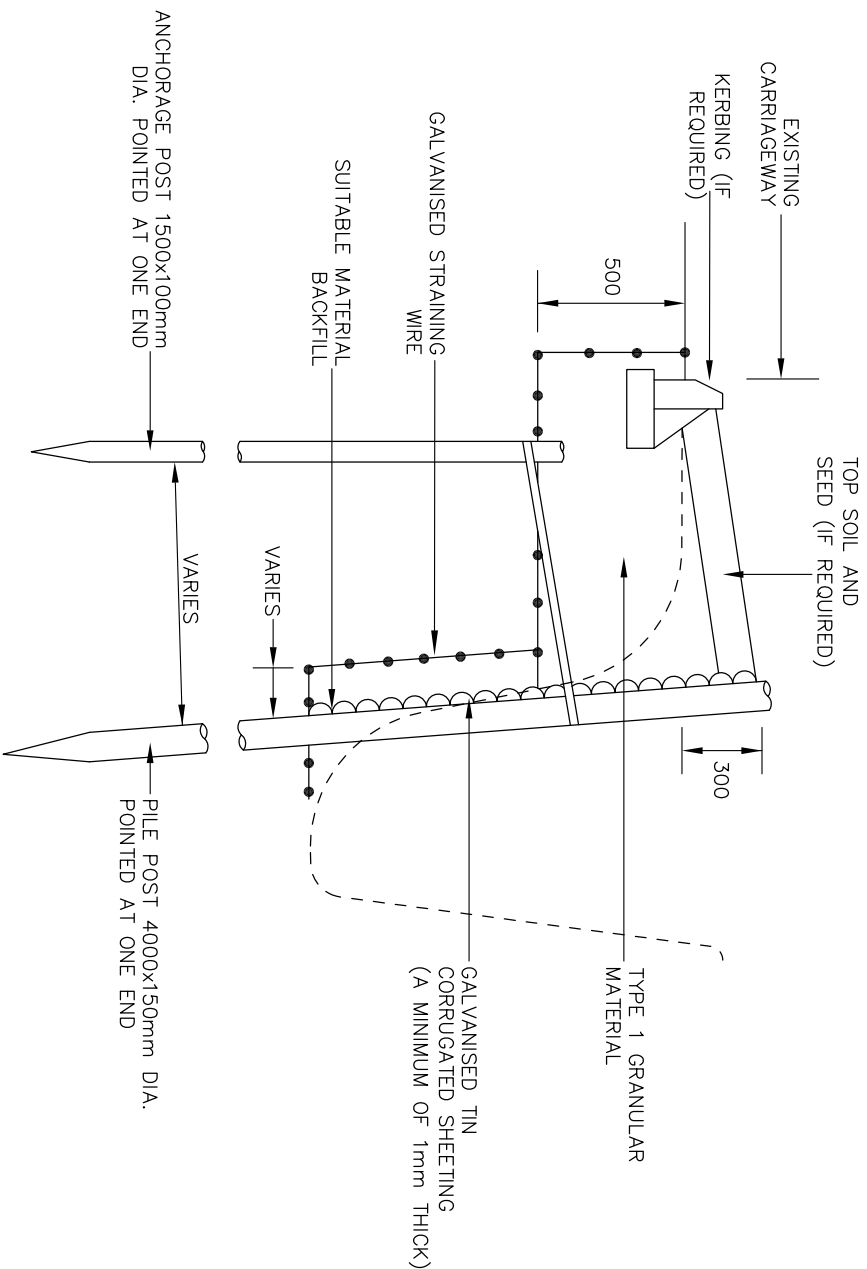
Term Maintenance Contract

Annex 37 – SS1-Road edge shoring DN581359

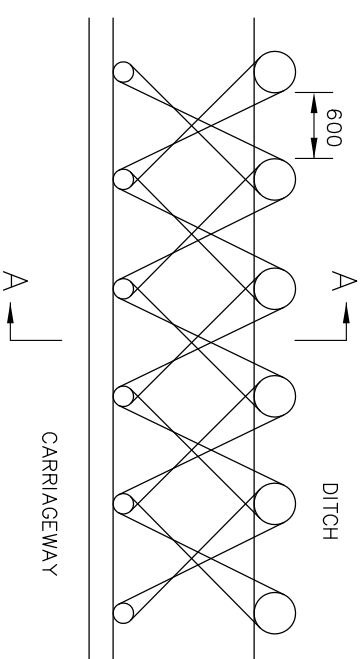
Commercial and Procurement Team

Somerset County Council
County Hall
Taunton
TA1 4DY

commercialandprocurement@somerset.gov.uk



SECTION A-A



PLAN SHOWING STRAINING WIRE ARRANGEMENT

NOTES: -

1. EARTHWORKS OUTLINE.
2. ALL TIN SHEETS, STRAINING LINE WIRE, TWISTED NAILS AND HORSE SHOE STAPLES TO BE GALVANISED.
3. GALVANISED TIN SHEETING TO BE OVERLAPPED BY A MINIMUM OF 200mm VERTICALLY AND A MINIMUM OF 600mm HORIZONTALLY.
4. GALVANISED TIN SHEETING TO BE FLUSH WITH TOP OF PILE POSTS.
5. STRAINING WIRES TO BE TENSIONED AND STAPLED TO POSTS WITH A MINIMUM OF 2NO. STAPLES ON EACH POST.
6. GALVANISED TIN SHEETING TO BE ATTACHED TO PILE POSTS BY GALVANISED TWISTED NAILS. A MINIMUM OF 2NO. NAILS ON EACH POST PER SHEET.

Project		Works to Highway Structures			
Title		Appendix 0/4			
Scale		As Shown	Drawn	Chk'd	Auth
Drawing Number		DL	AWP	JSD	
Rev		SS1			
Status		P			
Rev		B			