

LEGEND

- A

RUNWAY LED 4K Linear luminaire by Dextra Lighting (Suspended @ 2.5m)
Each length shall consist of 3x3m extrusions and 1x1.5m extrusion. Allow 1 emergency module per length
- B

RUNWAY LED 4K Linear luminaire C/W R25c by Dextra Lighting (Flush Mounted)
- C

RUNWAY LED 4K Linear luminaire C/W R25c by Dextra Lighting (Surface Mounted)
- D

EPK LED by Dextra Lighting 5ft
3 hours integral emergency pack
- E

DENOTES EMERGENCY TYPE with Amed LED 4000K Surface mounted luminaire By Dextra Lighting (White)
- F

REALTA MICRO LED by Thorlux lighting
- G

LED strip lighting by Dextra lighting
- H

LED 4 Emergency corridor luminaire by Dextra Lighting
- I

Mirror light by Sykonio 0053400
- J

1 GANG LIGHT SWITCH
- K

1 GANG 2 WAY LIGHT SWITCH
- L

RETRACTIVE SWITCH FOR DS1 DIMMING
- M

3 HOUR NON MAINTAINED SIGN LIGHT
- N

TRIPLE POLE ISOLATOR FOR EXTRACTOR FAN. INCLUDE FOR VENT AXIA SILHOUETTE 100 TM (PIR/TIMER) AND 100MM CORE CUT HOLE AND EXIT GRILL
- O

MAINTAINED COMPANY SIGN LIGHT ON LANDLORDS SUPPLY VIA TIMECLOCK
- P

SIGN

NOTES

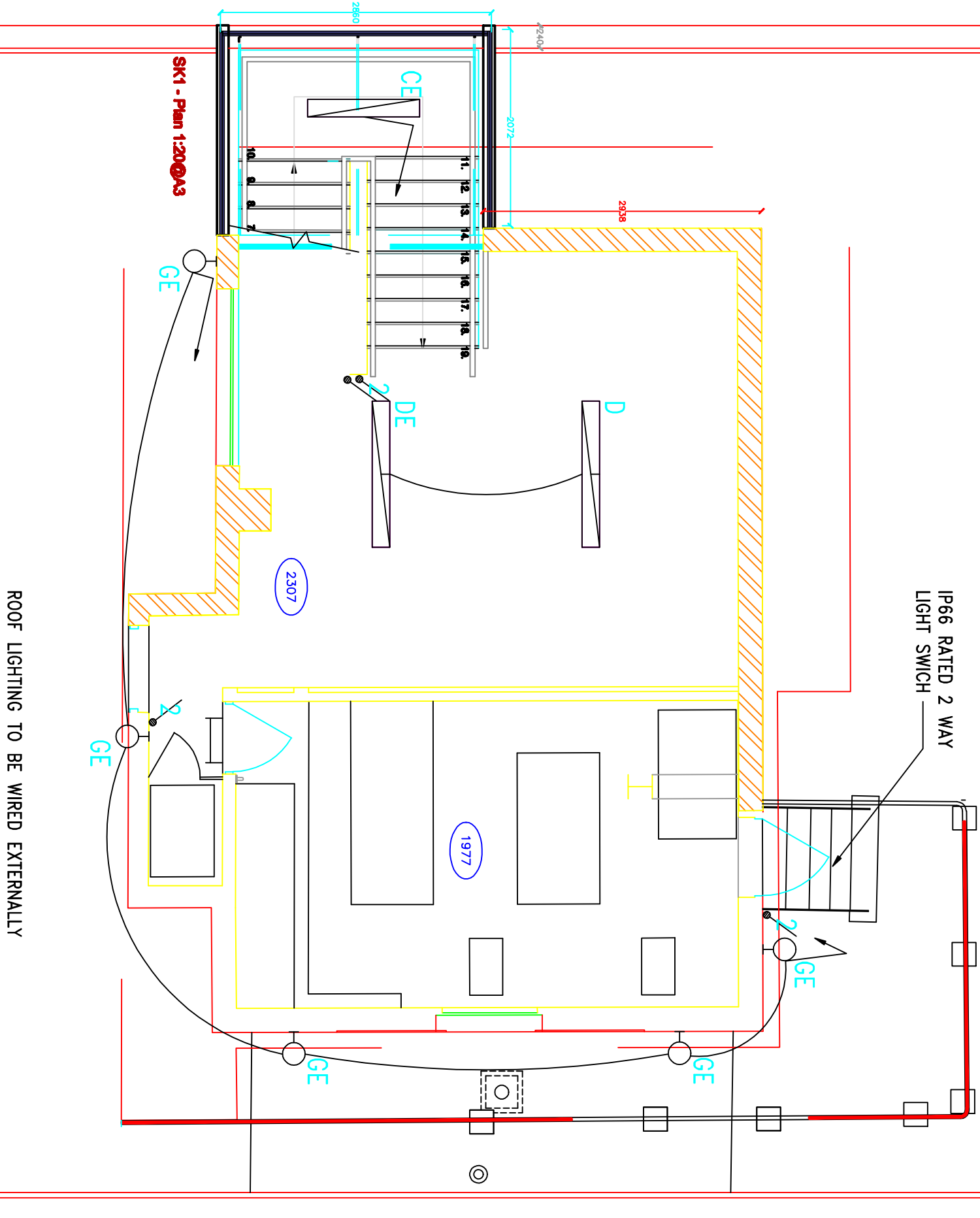
These drawings shall be read in conjunction with the "Electrical Specification" by Rosiek Ltd

The contractor will be required to visit site prior to the submission of their tender documents. The additional costs will be accepted due to the contractors failure to carry out the specified pre-tender survey. All items shown or noted on these drawings together with the specification shall be included within the tendered sum

The contractor shall note that each office space and adjacent W/C shall be fed via the local distribution board in that area. Common areas such as stair wells landings entrance hall shall be supplied from the Landlords board.

All wiring shall be contained in galvanised steel conduit mounted flush behind new plasterboard ceilings and partitions. Surface mounted on existing brick work.

Before any materials are ordered or installation work commenced, the contractor shall put forward their containment proposals for discussion



Item#	Quantity	Title/Name, designation, material, dimension etc				Article No./Reference
Designed by Ben Jones	Checked by bj	Approved by - date N/A	Filename Preliminary	Date 04/09/17	Scale 1:50 @ A1	

Rosiek Ltd

Roof Lighting Layout

Dwg No. 17020-T-219

Edition
1/1

Sheet
1/1