

PROPOSED BEAM ETHERNET CABLE ROUTE IN EXISTING ROOF VOID RUN TO PLANT ROOM-SEE PART PLAN BELOW

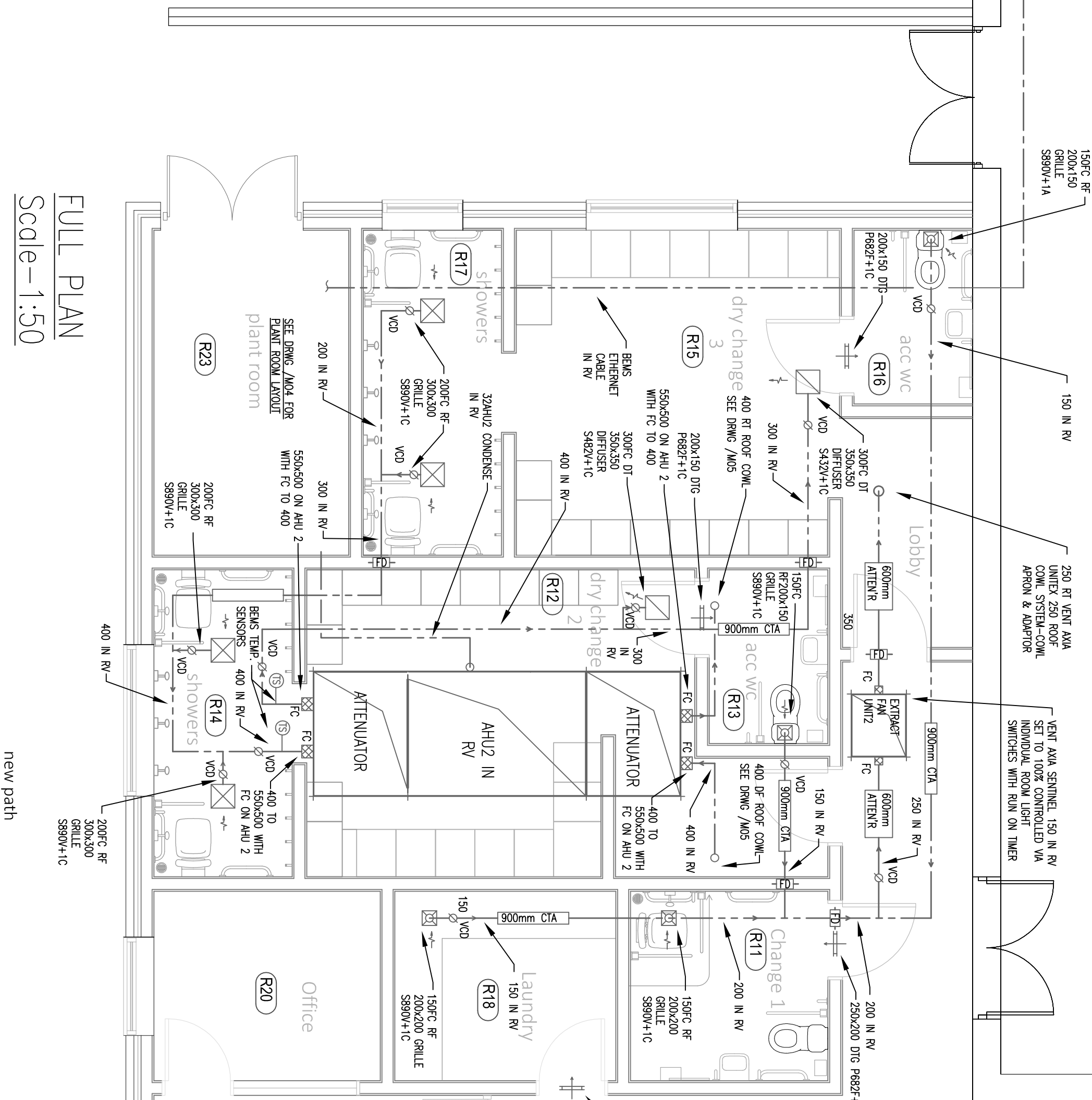
The floor plan of the Sports Hall includes the following areas and specifications:

- Entrance and Corridor:**
 - Corridor (R03) with a width of 600mm.
 - Acc (R07) with a width of 3000mm.
- Staff Change Rooms:**
 - Staff Change 1 (R01) and Staff Change 2 (R02) with widths of 1500mm and 1500mm respectively.
 - Staff Change 1 (R04) with a width of 1500mm.
- Restrooms and Washrooms:**
 - WC (R05) and WC (R06) with widths of 1500mm and 1500mm respectively.
 - WC (R07) with a width of 1500mm.
- Other Rooms:**
 - Room G00062 (Existing) with a width of 1500mm.
 - Room G00063 (Existing) with a width of 1500mm.
 - Room G00064 (Existing) with a width of 1500mm.
 - Room G00065 (Existing) with a width of 1500mm.
 - Room G00066 (Existing) with a width of 1500mm.
 - Room G00067 (Existing) with a width of 1500mm.
 - Room G00068 (Existing) with a width of 1500mm.
 - Room G00069 (Existing) with a width of 1500mm.
 - Room G00070 (Existing) with a width of 1500mm.
 - Room G00071 (Existing) with a width of 1500mm.
 - Room G00072 (Existing) with a width of 1500mm.
 - Room G00073 (Existing) with a width of 1500mm.
 - Room G00074 (Existing) with a width of 1500mm.
 - Room G00075 (Existing) with a width of 1500mm.
 - Room G00076 (Existing) with a width of 1500mm.
 - Room G00077 (Existing) with a width of 1500mm.
 - Room G00078 (Existing) with a width of 1500mm.
 - Room G00079 (Existing) with a width of 1500mm.
 - Room G00080 (Existing) with a width of 1500mm.
 - Room G00081 (Existing) with a width of 1500mm.
 - Room G00082 (Existing) with a width of 1500mm.
 - Room G00083 (Existing) with a width of 1500mm.
 - Room G00084 (Existing) with a width of 1500mm.
 - Room G00085 (Existing) with a width of 1500mm.
 - Room G00086 (Existing) with a width of 1500mm.
 - Room G00087 (Existing) with a width of 1500mm.
 - Room G00088 (Existing) with a width of 1500mm.
 - Room G00089 (Existing) with a width of 1500mm.
 - Room G00090 (Existing) with a width of 1500mm.
 - Room G00091 (Existing) with a width of 1500mm.
 - Room G00092 (Existing) with a width of 1500mm.
 - Room G00093 (Existing) with a width of 1500mm.
 - Room G00094 (Existing) with a width of 1500mm.
 - Room G00095 (Existing) with a width of 1500mm.
 - Room G00096 (Existing) with a width of 1500mm.
 - Room G00097 (Existing) with a width of 1500mm.
 - Room G00098 (Existing) with a width of 1500mm.
 - Room G00099 (Existing) with a width of 1500mm.
 - Room G00100 (Existing) with a width of 1500mm.

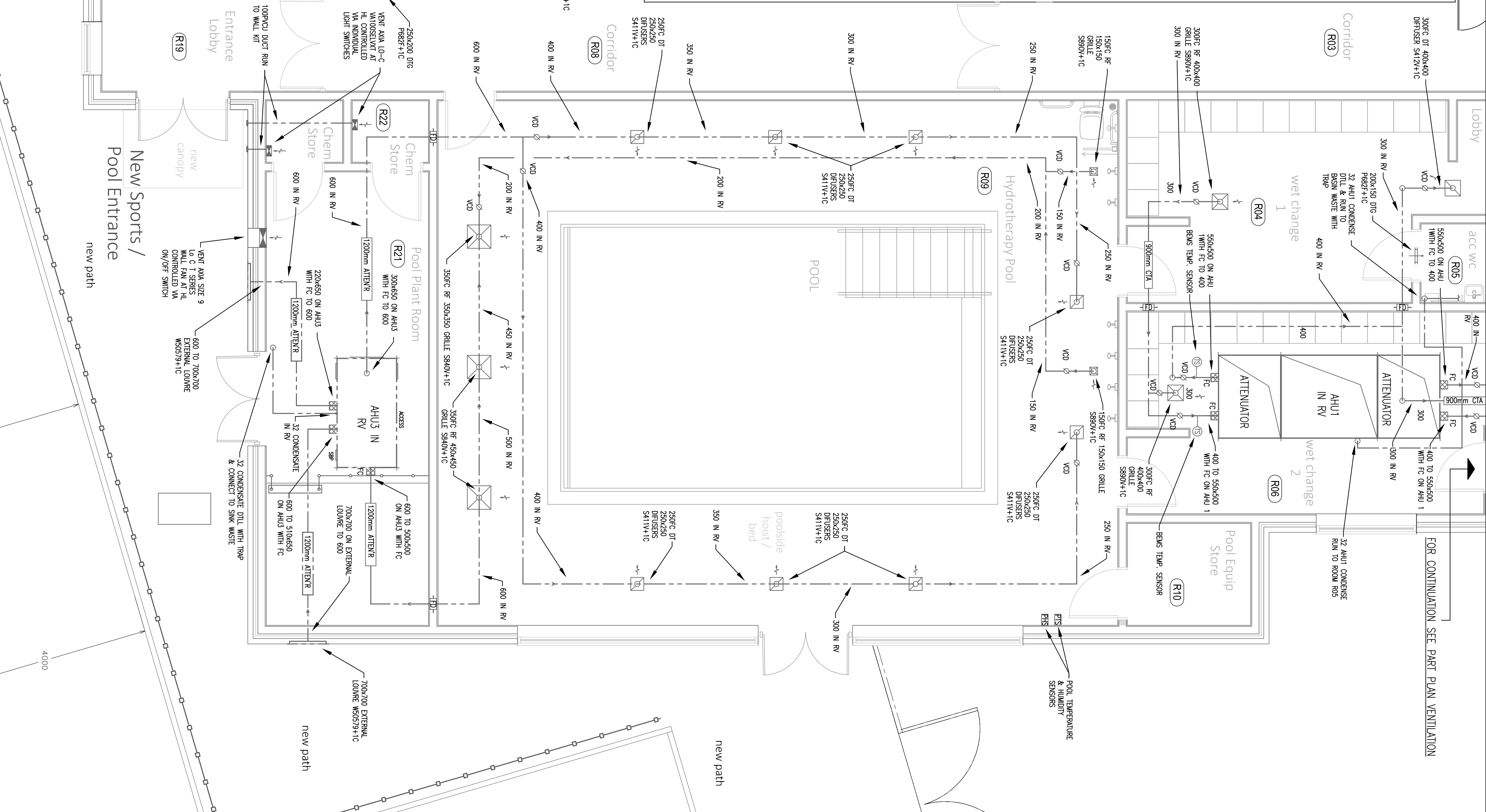
G0154 Circulation

Scale-1:100

1. THESE NOTES AND THIS DRAWING SHALL BE READ IN CONJUNCTION WITH DRAWINGS 17301/M01 TO /M05 TOGETHER WITH SPECIFICATION 17301/SP/M01.



Scale-1:50



THE CONTRACTOR IS ADVISED TO VISIT THE SITE PRIOR TO TENDERING & ASCERTAIN ALL LOCAL CONDITIONS & RESTRICTIONS LIKELY TO AFFECT THE EXECUTION OF THE WORKS. NO CLAIMS ARISING FROM FAILURE TO DO SO WILL BE CONSIDERED.

THE CONTRACTOR IS TO CHECK ALL DIMENSIONS ON SITE PRIOR TO COMMENCING WORKS ON ORDERING ANY MATERIALS.

ALL WORKMANSHIP AND MATERIALS TO COMPLY WITH BUILDING REGULATIONS. ALL MATERIALS TO BE SUPPLIED BY THE CONTRACTOR. INSTRUCTIONS/AGREMENT CERTIFICATES ETC ALL MATERIALS SHALL BE SUITABLE FOR PURPOSE.

THE CONTRACTOR IS TO MAKE GOOD ALL WORKS DISTURBED WHETHER INCLUDED IN THE WORKS OR NOT.

THE CONTRACTOR TO COMPLY WITH ALL REGULATIONS AND HEALTH AND SAFETY REQUIREMENTS WHERE APPROPRIATE.

DRAWN BY:	G.REID	DATE:	FEB 2018	ISSUE NUMBER:
CHECKED BY:		DATE:		
SCALE:	1.50 & 1:100 @ A1			
				DATE OF ISSUE:

DRAWING NUMBER:

17301/M03

tender issue

This design/document has been prepared by Bury MBC Architectural Services. It should not, without prior permission, be used for any use other than the use originally intended.

Resources & Regulatory Architectural Services

Bury
COUNCIL

3 Knowsley Place,
Duke Street,
Bury, Lancs BL9 0EJ

Tel: 0161 253 6989
Fax: 0161 253 6193
Web: www.bury.gov.uk

Bury | Prestwich | Radcliffe | Ramsbottom | Tootington | Whitefield

ELMS BANK SPECIALIST ARTS
COLLEGE-
PHASE 2 HYDROTHERAPY POOL

MECHANICAL SERVICES -
VENTILATION INSTALLATIONS AND
BEMS CABLE ROUTE