

NOTES

1. THIS DRAWING IS NOT TO BE SCALED
2. FOR DETAILS OF CIRCUITRY REFER TO THE DISTRIBUTION BOARD SCHEDULE

SCHEDULE OF MOUNTING HEIGHTS

1200MM	LIGHT SWITCH (TOP OF PLATE)
1800MM	DISTRIBUTION BOARD (TOP OF UNIT)
1800MM	WALL MOUNTED LUMINAIRES (TOP OF UNIT)

LUMINAIRE SCHEDULE

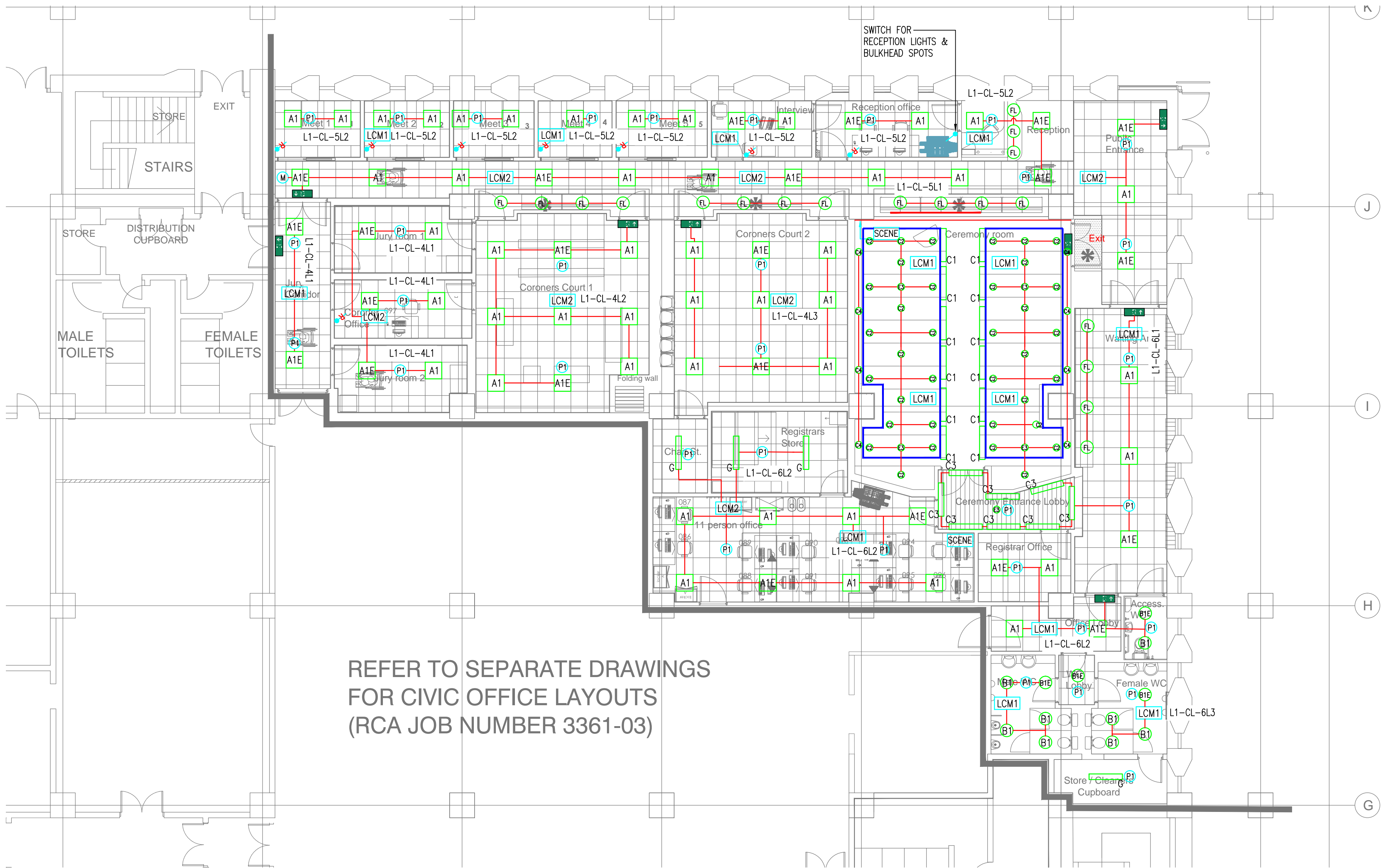
A1	-	LUCECO LUXPANEL BACKLIT FRAMELESS
B1	-	LUCECO PLATINUM GLOS DOWNLIGHT
G	-	LUCECO LED LINEAR BATTEN
'E'	-	DENOTES 3 HOUR NON MAINTAINED EMERGENCY

LEGEND

	SINGLE LIGHT SWITCH
	2-WAY LIGHT SWITCH
	INTERMEDIATE LIGHT SWITCH
	RETRACTABLE LIGHT SWITCH
	KEY SWITCH
	PIR DETECTOR EBR-CPIR
	PIR DETECTOR EBDSPIR-PRM
	MICROWAVE DETECTOR
	MARSHALLING BOX LCM1 = 8WAY EBR-LCM8-BDD LCM2 = 10WAY - EBR-LCM10-10DD
	SCENE SET CONTROL SWITCH
	EXIT SIGN (SEE SCHEDULE OF EXIT SIGNAGE)
	ESCAPE ROUTE EMERGENCY
	OPEN AREA EMERGENCY
	LINEAR LUMINAIRE (REFER TO LUMINAIRE SCHEDULE)
	CEILING MOUNTED LUMINAIRE (REFER TO LUMINAIRE SCHEDULE)
	WALL MOUNTED LUMINAIRE (REFER TO LUMINAIRE SCHEDULE)
	PANEL LUMINAIRE (REFER TO LUMINAIRE SCHEDULE)

SCHEDULE OF EXIT SIGNAGE

	PROGRESS FORWARD FROM HERE/ PROGRESS FORWARD AND UP FROM HERE
	PROGRESS DOWN FROM HERE
	PROGRESS TO THE LEFT FROM HERE
	PROGRESS TO THE RIGHT FROM HERE
	PROGRESS UP AND TO THE RIGHT FROM HERE
	PROGRESS DOWN AND TO THE RIGHT FROM HERE
	PROGRESS DOWN AND TO THE LEFT FROM HERE
	PROGRESS UP AND TO THE LEFT FROM HERE



C3	CEREMONY ROOM AND LOBBY LIGHTING	09.03.2018
C2	DESIGN UPDATE	31.01.2017
C1	ISSUED FOR CONSTRUCTION	11.11.2017
REV	DESCRIPTION	DATE



	ELECMECH CONSULTANCY LTD HARVEST BARN FARLANDS PUCKLECHURCH BRISTOL, BS16 9PD T: 0117 9372644 M: 07917711688 e: mike@elec-mech.co.uk
--	---

Client: MILTON KEYNES COUNCIL

Project: MILTON KEYNES CIVIC CENTRE MK9 3EJ

Title: ELECTRICAL SERVICES CORONERS AREA LIGHTING LAYOUT

Drawn	Checked	Date	Scale
AR	MR	01.04.2017	1:100 @ A1

Drawing Number	Sheet
E2004	C3.