

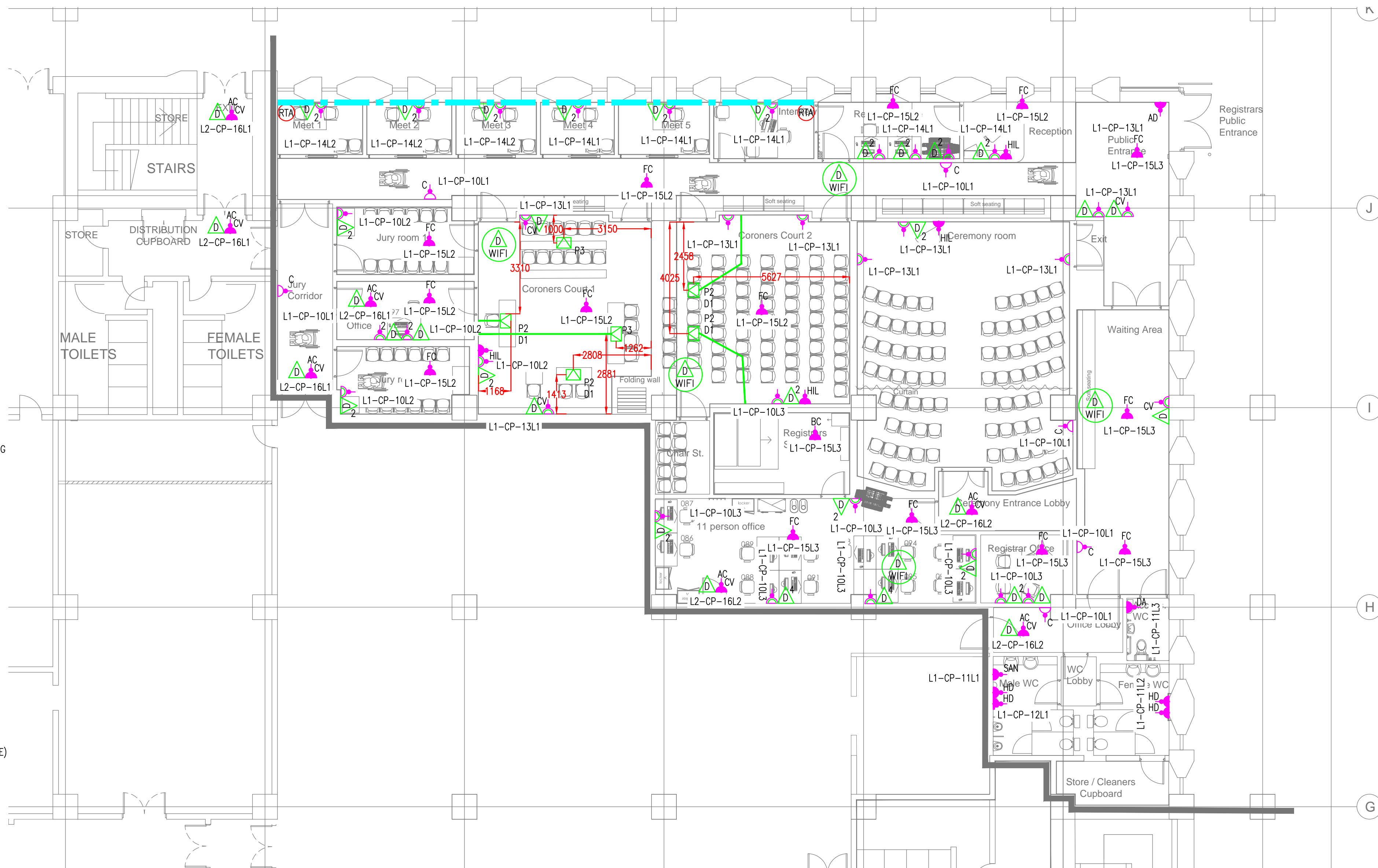
SKIRTING (NOT AT SKIRTING LEVEL  
ON GROUND FLOOR) TRUNKING  
UPVC CONDUIT IN FLOOR SCREED  
POWER = 1x25mm CONDUIT  
1-4 DATA = 1x32mm CONDUIT  
5-8 DATA = 2x32mm CONDUIT

1. FOR FINAL LAYOUT OF KITCHENETTES REFER TO ARCHITECTS SETTING OUT DRAWINGS.
2. 13A FCU'S LABELED WITH USE.
3. REFER TO DB SCHEDULE FOR FINAL CIRCUITRY DETAILS.
4. EARTHING AND BONDING, TO BE IN ACCORDANCE WITH THE IEE REGULATIONS.
5. ACCESS CONTROLLED DOORS FINAL POSITION OF PSU TBC WITH SPECIALIST
6. REFER TO BMS MECHANICAL DRAWINGS FOR FINAL LOCATIONS OF MECHANICAL PLANT.
7. LIFT SUBMAIN SUPPLY & TELEPHONE OUTLETS TO REMAIN AS EXISTING INSTALLATION.
8. METHOD OF WIRING BASKET, UPVC CONDUIT & 6242B

|     |   |                        |
|-----|---|------------------------|
| AC  | - | ACCESS CONTROL         |
| DH  | - | DOOR HOLD OPEN         |
| DTB | - | DROP TO BELOW          |
| EFR | - | EXTRACT FAN            |
| FAP | - | FIRE ALARM PANEL       |
| FR  | - | FRIDGE                 |
| HD  | - | HAND DRYER             |
| HIL | - | HEARING INDUCTION LOOP |
| HL  | - | HIGH LEVEL             |
| IP  | - | IP RATED (XX)          |
| LL  | - | LOW LEVEL              |
| RTA | - | RISE TO ABOVE          |
| ST  | - | SENSOR TAPS            |
| WF  | - | WAVE FLUSH             |
| WH  | - | WATER HEATER           |
| ZIP | - | ZIP BOILER             |

|           |  |
|-----------|--|
| 450MM     | TWIN SWITCHED SOCKET OUTLET (UNDERSIDE OF PLATE) |
| 150MM AWT | KITCHEN SOCKET OUTLET ABOVE WORK TOP (CENTER)    |
| 450MM     | DATA AND TELEPHONE OUTLET (UNDERSIDE OF PLATE)   |
| 1800MM    | DISTRIBUTION BOARD (TOP OF UNIT)                 |
| 1800MM    | HAND DRYER FCU (TOP OF UNIT)                     |
| 1000MM    | HAND DRYER LOW LEVEL OUTLET                      |
| CV        | DENOTES MOUNTED IN CEILING VOID                  |

|    |  |
|----|--|
| HL | HIGH LEVEL ITEMS FAN SPURS ETC                 |
| AD | FUSED SPUR POWERED DOOR (AD IN CEILING VOID)   |
|    | TOUCHDOWN HEIGHTS TBC BY ARCHITECT             |
|    | SKIRTING TRUNKING MOUNTED FLUSH TO FLOOR       |
|    | SPECIFIC MOUNTING HEIGHTS INDICATED ON DRAWING |



**STEARNE**  
BETA HOUSE MILLERS ROAD  
WARWICK CV34 5AY  
TEL 01926 494079 FAX 01926 411012  
[www.stearne.net](http://www.stearne.net)

Client  
MILTON KEYNES COUNCIL

| Title               |
|---------------------|
| ELECTRICAL SERVICES |
| CORONERS AREA       |
| SMALL POWER LAYOUT  |

|                         |               |                    |                     |
|-------------------------|---------------|--------------------|---------------------|
| Drawn<br>AR             | Checked<br>MR | Date<br>01.04.2017 | Scale<br>1:100 @ A1 |
| Drawing Number<br>E3004 |               |                    | Issue<br>C2         |