

Proposed First Floor Plan  
 GIFA = 940.5m<sup>2</sup>  
 Total GIFA = 2176.1m<sup>2</sup>

**FIRE STRATEGY LEGEND**

- 60 min FR construction
- 30 min FR construction (partition to be full height to underside of roof and any services passing through to have fire dampers.)
- 60 min FR to beams supporting the first floor
- MRU Magnetic Door Release Unit
- FD30S Doorset with fire door keep shut notice
- FD30S Doorset with fire door keep shut notice and door closer
- FD60S Doorset with fire door keep shut notice and door closer
- Note - 60 min fire protection provided to all loadbearing structure.
- Read in conjunction with door schedule to determine which door require smoke and intumescent seals etc
- Escape route/ Direction
- ▼ Final Exit
- All services passing through fire rated walls to have fire/smoke dampers/ fire sealing to rating of wall as noted on M&E engineers drawings. Refer to NBS Section P12 for details of fire stopping systems.

**FIRE STRATEGY LEGEND**

- 1 Type S1
- 2 Type S2
- 3 Type S3
- 4 Type S4
- 5 Type S5
- 6 Type S6
- 7 Type S7
- 8 Type S8
- 9 Type S9
- 10 Type S10

Refer to NBS specification section N15 for size and type of signage

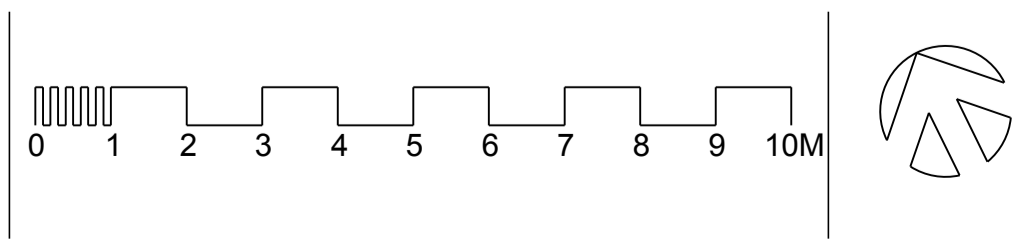
Also to be read in conjunction with M&E engineers drawings and specifications for maintained and non-maintained emergency exit luminaires

**FIRE STRATEGY LEGEND**

- Fire alarm break glass call point
- Fire alarm smoke detector point
- Fire alarm heat detector point
- Fire alarm heat detector point
- Fire alarm rotating beacon point
- Fire alarm control panel
- Illuminated fire exit sign
- Vision panel

PLEASE NOTE  
 FOR CONSTRUCTION PURPOSES USE ONLY FIGURED DIMENSIONS. THIS DRAWING MUST ALWAYS BE READ IN CONJUNCTION WITH ALL RELEVANT PROJECT DETAILS. ALL DIMENSIONS MUST BE CHECKED ON SITE PRIOR TO COMMENCEMENT. PLEASE REPORT ANY DISCREPANCY TO THE ARCHITECT OR CONTRACT ADMINISTRATOR

Revisions	First Issue
P1 24.08.14	Strategy Revised, Information Issue.
P2 26.08.14	Drawing revised, Information Issue.
P3 28.10.14	Fire Rating revise as shown. Layout revised to F23, F30, F15, F02
P4 16.01.15	Issue to Building Control
P5 16.02.15	Construction Issue
P6 18.05.15	Illuminated fire exit signs added
C2 22.07.14	DF-26 opening direction altered
C3 11.09.15	



Drawing: <b>Fire Strategy First Floor Plan</b> Project/Client: <b>Thistle Hill Primary School</b> <b>Galliford Try</b>	Date: <b>Jun 14</b> Scale @ A1: <b>1:100</b>
Drawing number: <b>1678 179</b>	Revision: <b>C3</b> Purpose of Issue: <b>Construction</b>

**HMY**  
 HazleMcCormackYoung LLP/Chartered Architects/  
 Leap House/ Frog Lane/ Tunbridge Wells/  
 Kent/ TN1 1Y7/ T 01892 515311/ F 01892 515285