

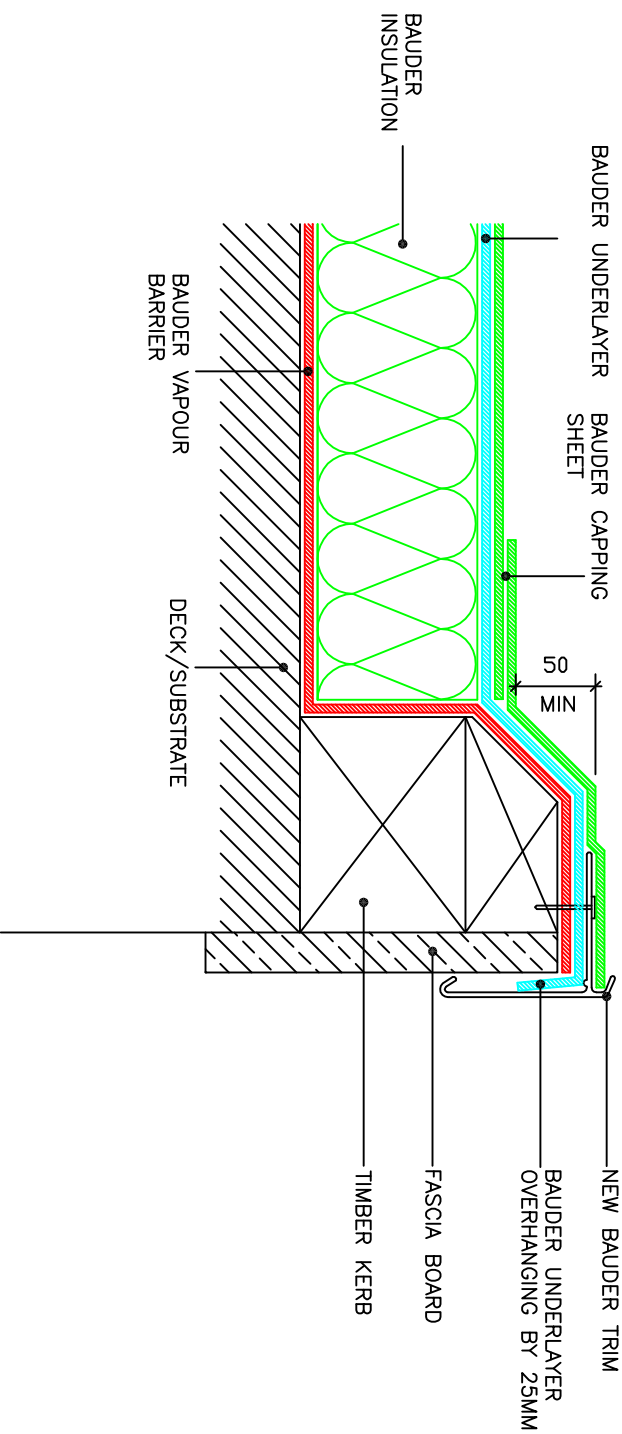
Bituminous Systems - Standard Detail

D01A

Issue	Date	Checked
1	7.3.07	PJF
2	28.07.09	PJF
NOT TO SCALE		

Notes:

1. This detail is of a conceptual nature and should only be used as such.
2. This detail is suitable for the following systems:
Bauder Total Roof System
Bauderflex System
System Airtech.



EDGE DETAIL TIMBER KERB WITH NEW GFRP TRIM



UK OFFICE
Bauder Limited
 70 Landseer Road, Ipswich, Suffolk IP3 0DH,
 England.
T: +44 (0)1473 257671
F: +44 (0)1473 230761
E: technical@bauder.co.uk
bauder.co.uk

IRELAND OFFICE
Bauder Limited
 O'Duffy Centre, Cross Lane,
 Carrickmacross, Co. Monaghan,
 Ireland.
T: +353 (0)42 9692 333
F: +353 (0)42 9692 839
E: technical@bauder.ie
bauder.ie