

00 Ground Floor Plan
1 : 50

Name	Area
Classroom 1	60.2 m ²
Classroom 2	60.2 m ²
Entrance Lobby	15.3 m ²
Mains	1.5 m ²
Stairs	19.7 m ²
Store 1a	2.3 m ²
Store 1b	2.7 m ²
Store 2a	4.9 m ²
Store 2b	2.7 m ²
WC 1	2.2 m ²
WC 2	2.2 m ²
WC Acc.	3.4 m ²

Summary - Modules GF		
Qty.	Bay Width	Bay Length
0. GROUND FLOOR		
1	4000	13400
1	4000	6400
1	3600	12100
1	3600	7700
1	2100	12100
1	2100	7700

Summary - Windows	
Qty.	Description
9	(120) 1135x1800mm Sgl-S (TOV/FX/D) W02
10	(120) 1135x2700mm Sgl-S (TOV/FX/D) W01
8	900x300 Louvre
27	

Summary - Doors	
Qty.	Description
Exterior:	
1	(120) 1360x2400mm Feature Entrance ED03
2	(120) 1360x2700mm Feature Entrance ED02
Exterior: 3	
Interior:	
5	(70) 805x2095mm (F26) WC
1	(70) 1005x2095mm (F26) WC Acc.
2	(70) FD30s 805x2095mm (F26) Store
8	(70) FD30s 1005x2095mm (F26) Store
2	(70) FD30s 1505x2095mm (F26) Calculation
4	(70) FD30s 1505x2095mm (F26) Classroom
Interior: 22	

DRAWING APPROVAL
Signed: _____
Date: _____

rev	description	by	date
08	Revised to suit comments	KJ	20/03/20
07	Revised to suit GDM comments	KJ	28/02/20
06	Revised to suit contractor and Architects comments	KJ	14/02/20
05	Revised to suit client comments	KJ	30/01/20
04	Revisions Post Issue 03M	RC	15/01/19
03	Updated in line with new Architects drawings	RC	03/12/19
02	Store core & ancillary spaces redesigned to suit revised GDM layout S12A	CJ	26/09/19
01	First Issue	KJ	



Tel: 01964 626761
enquiries@integrabuildings.co.uk
www.integrabuildings.co.uk

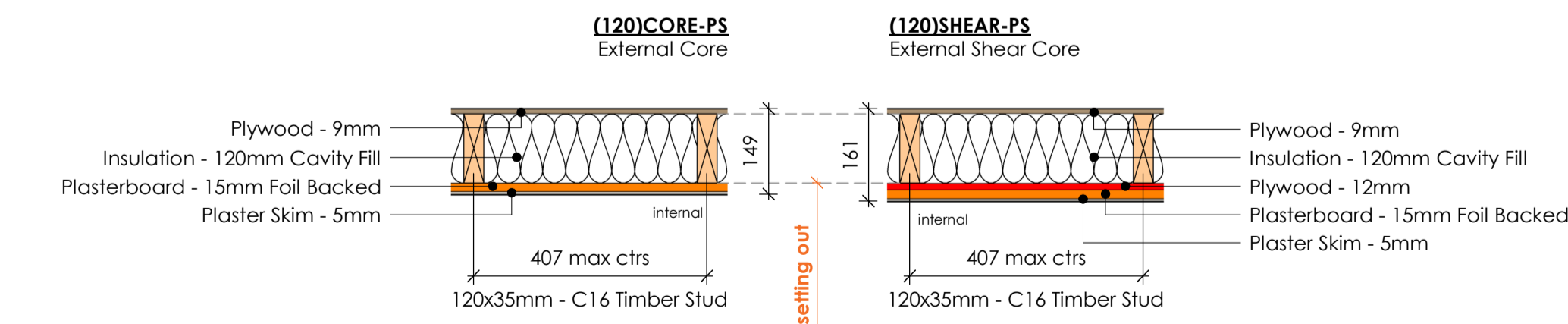
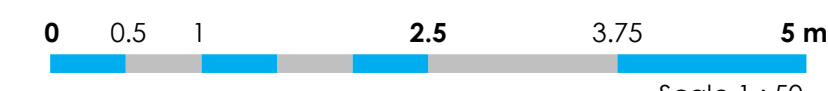
client:
Kier

project:
Water Meadows Primary School

file:

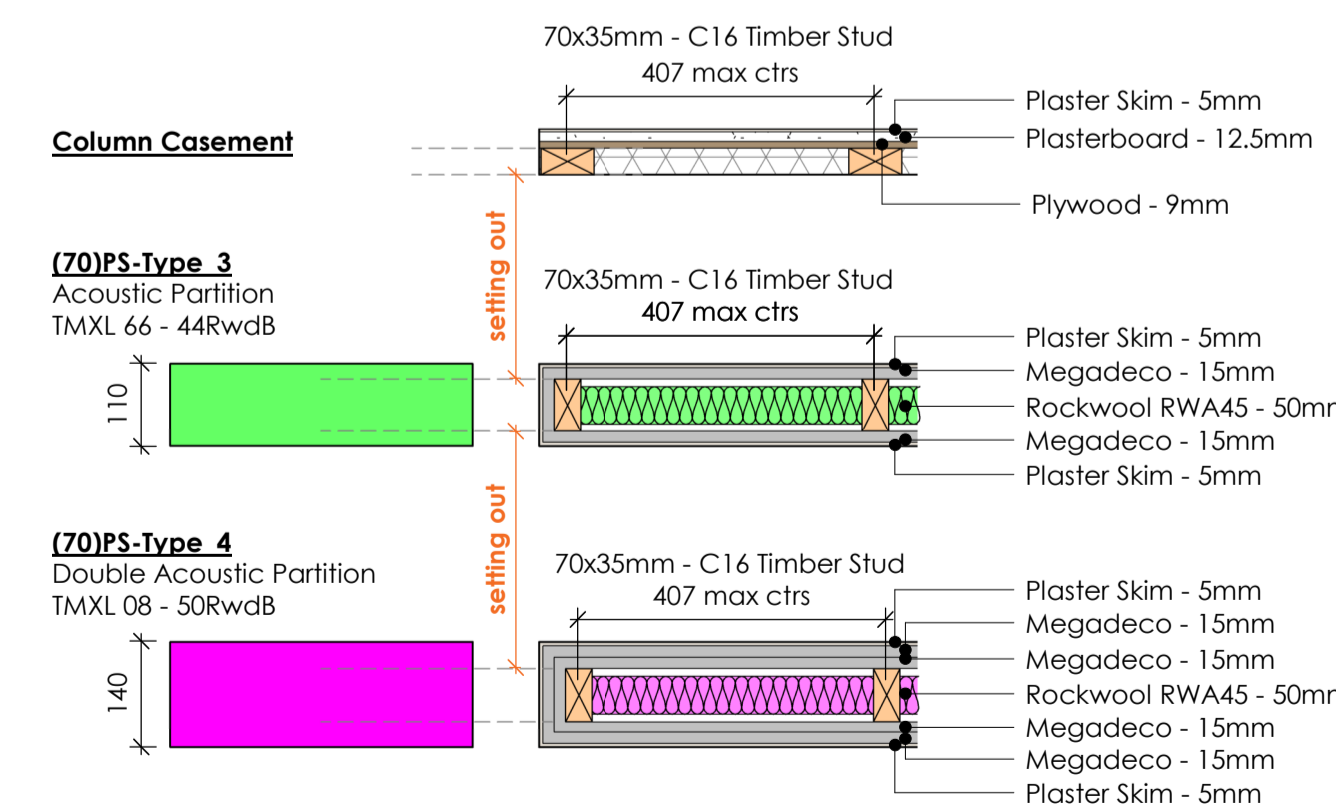
Ground Floor GA Plan

date: 10/09/19
drawn by: IBL
checked: KJ
scale: @ A1
19.20604
As indicated
drawing ref: status: rev:
00-0100 P08



All wall setting out dimensions are to timber frame NOT FINISH FACE of wall.
External wall setting out dimensions are to outer face of column.

External Wall Types - Plaster Skim
1 : 10



All wall setting out dimensions are to timber frame NOT FINISH FACE of wall.

Internal Wall Types - Plaster Skim
1 : 10