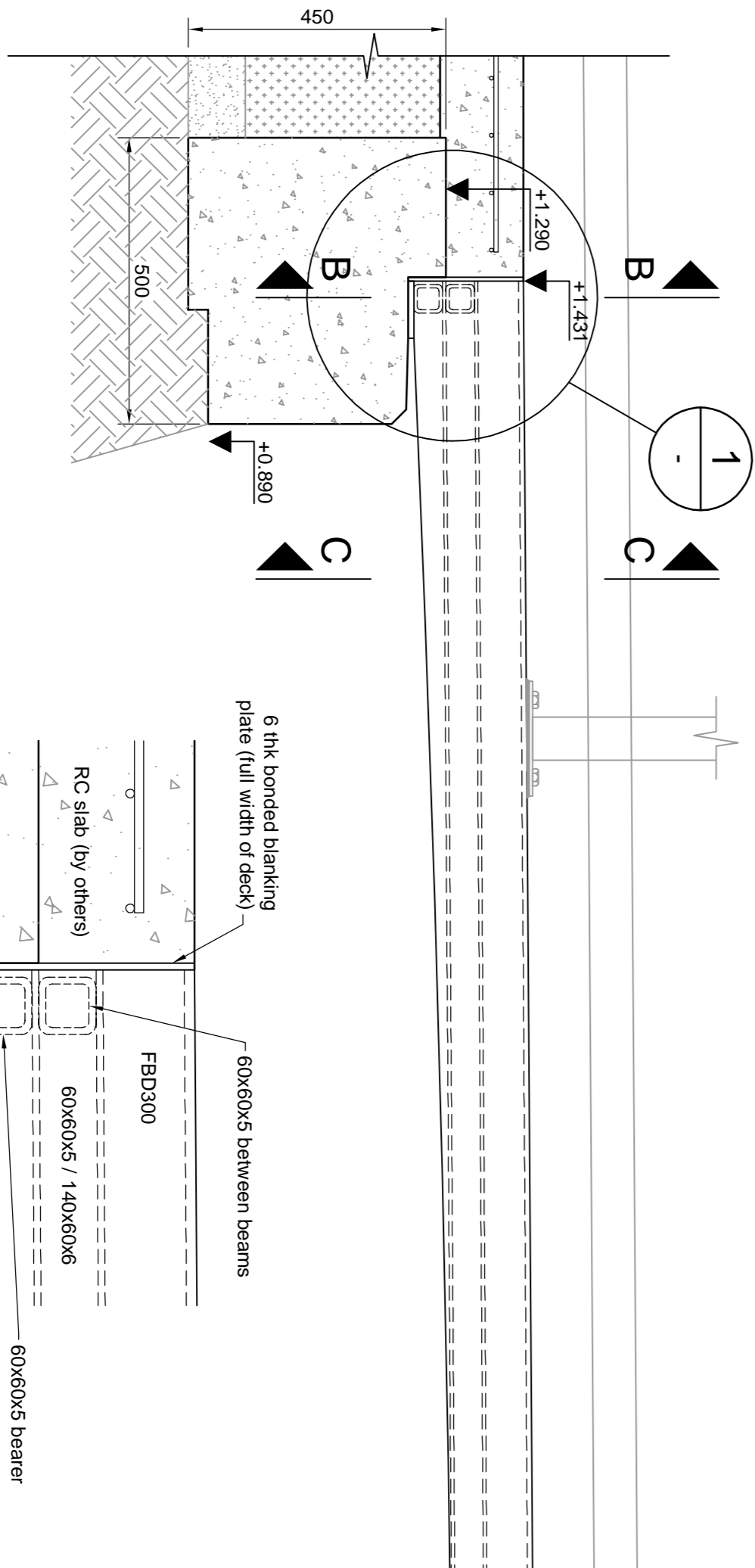
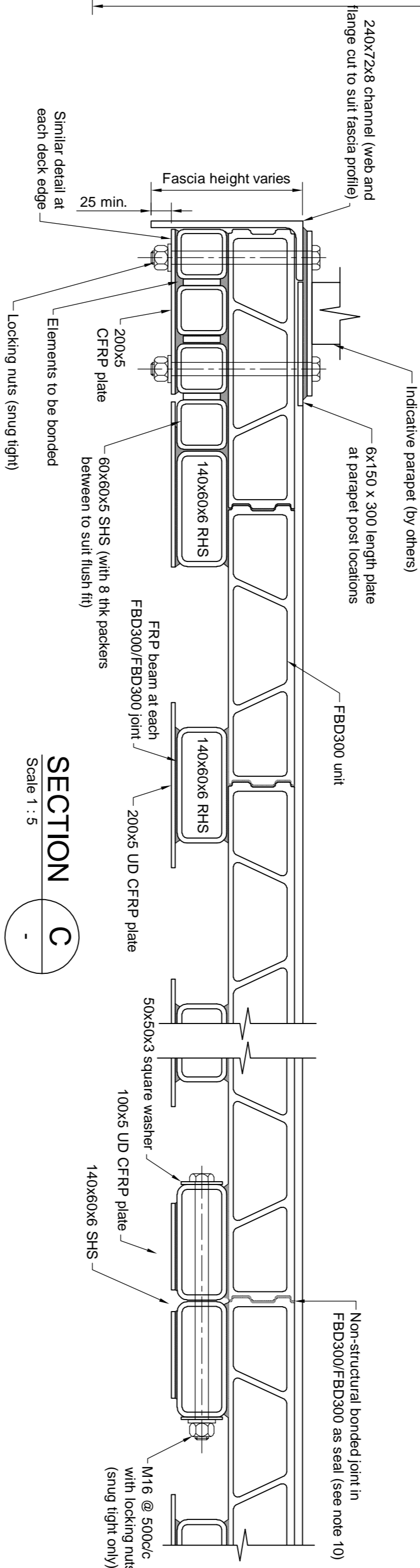
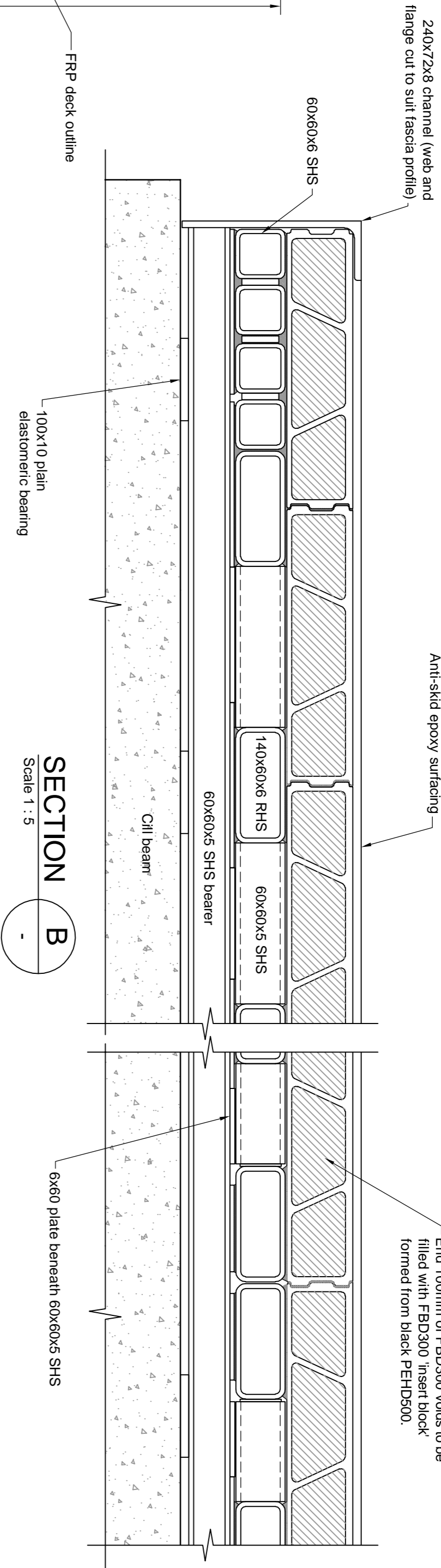
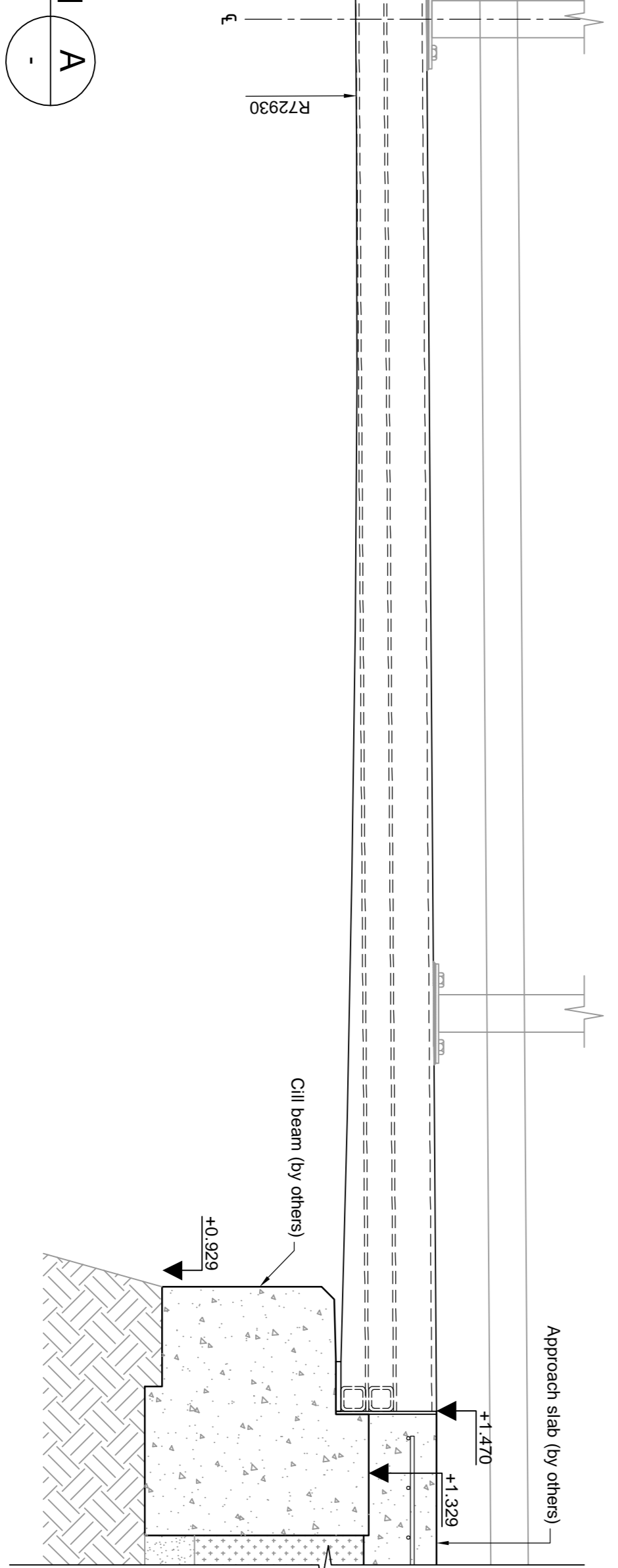


PLAN ON FRP DECK OUTLINE
(Scale 1:25)



ELEVATION A
Scale 1 : 10



- Notes:**
- Do not scale from this drawing.
 - All dimensions are shown in millimetres. All levels are shown in metres.
 - Deck length and skew as per VSP drawing 70044460-SBR-DN-SB-0004_102 (04/04/18).
 - Deck width is based on 13No. FBD300 units.
 - All GFRP materials to be E23 to BS EN 13706 provided by Fubelme.
 - CFRP plate to have minimum elastic modulus 130GPa, provided by Fubelme.
 - All steel bolts, nuts and washers to be Grade 8.8 and galvanised to EN ISO 1461.
 - Bonding adhesive to be two-part structural epoxy or polyurethane with elastic modulus of between 1-10GPa, minimum tensile strength 25MPa.
 - All structural bonding work and FRP cutting in accordance with FRP materials and workmanship specification. All FRP components to be bonded U.N.O.
 - FRP deck assumed to be fabricated in two parts, with parapets and central FRP deck bolted joint completed prior to installation of bearings.

Rev	Rev. Date	Purpose of revision	CS	MA	LC	LC

JACOBS
5 First Street, London Bridge, A15 424
Tel: +44 (0) 20 7323 3333 Fax: +44 (0) 20 7325 0001
www.jacobs.com

CTS BRIDGES LTD

Project
POOLE PARK SLUICE BRIDGE
FRP DECK

Drawing title
GENERAL ARRANGEMENT
AND DETAILS

Drawing status

FOR INFORMATION

Scale	AS SHOWN @ A1	DO NOT SCALE
Jacobs No.	TBC	
Client no.	N/A	P01

Drawing number

POOLE-DRG-01

© Copyright 2018 Jacobs U.K. Limited. The contents and information contained in this document are the property of Jacobs U.K. Limited. No part of this document may be reproduced, stored in a retrieval system, or transmitted in any form or by any means, electronic, mechanical, photocopying, recording, or by any information storage or retrieval system, without the prior written permission of Jacobs U.K. Limited. The user of this document is deemed to have accepted the provisions of the contract between Jacobs and the Client. Jacobs accepts no liability or responsibility whatsoever for, or in respect of, any use of, or reliance upon, the drawings or any third party.