

**Notes**

Bailey Partnership is the trading name of Bailey Partnership (Consultants) LLP, a limited liability partnership registered in England and Wales No. OC420278.

This drawing is copyright and owned by Bailey Partnership (Consultants) LLP, and is for use on this project and site only unless contractually stated otherwise.

Responsibility is not accepted for errors made by others in scaling from this drawing. All construction information should be taken from figured dimensions only.

All other design team elements, where indicated, have been imported from the consultant's drawings and reference should be made to the individual consultant's drawings for exact setting out, size and type of component.

Discrepancies and / or ambiguities within this drawing, between it and information given elsewhere, must be reported immediately to the architect for clarification before proceeding.

All works are to be carried out in accordance with the latest British Standards and Codes of Practice unless specifically directed otherwise in the specification.

Responsibility for the reproduction of this drawing in paper form, or if issued in electronic format, lies with the recipient to check that all information has been replicated in full and is correct when compared to the original paper or electronic image. Graphical representations of equipment on this drawing have been coordinated, but are approximations only. Please refer to the Specifications and / or details for actual sizes and / or specific contractor construction information.

Ordinance Survey Paper Map Copying License number: 40006119

This original document is issued for the purpose indicated below and contains information of confidential nature. Further copies and circulation will be strictly in accordance with the confidentiality agreement under the contract.

© Bailey Partnership (Consultants) LLP: This document is issued for the party which commissioned it and for specific purposes connected with the captioned project only. It should not be relied upon by any other party or used for any other purposes. We accept no responsibility for the consequences of this document being relied upon by any other party, or being used for any other purpose, or containing any error or omission which is due to an error or omission in data supplied to us by others.

**SAFETY, HEALTH AND ENVIRONMENTAL INFORMATION**  
Refer to the relevant Construction (Design and Management) documentation where applicable.

It is assumed that all works on this drawing will be carried out by a competent contractor, working where appropriate to an approved method statement.

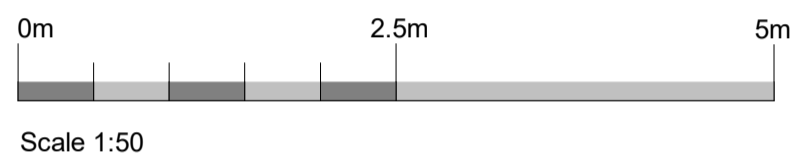
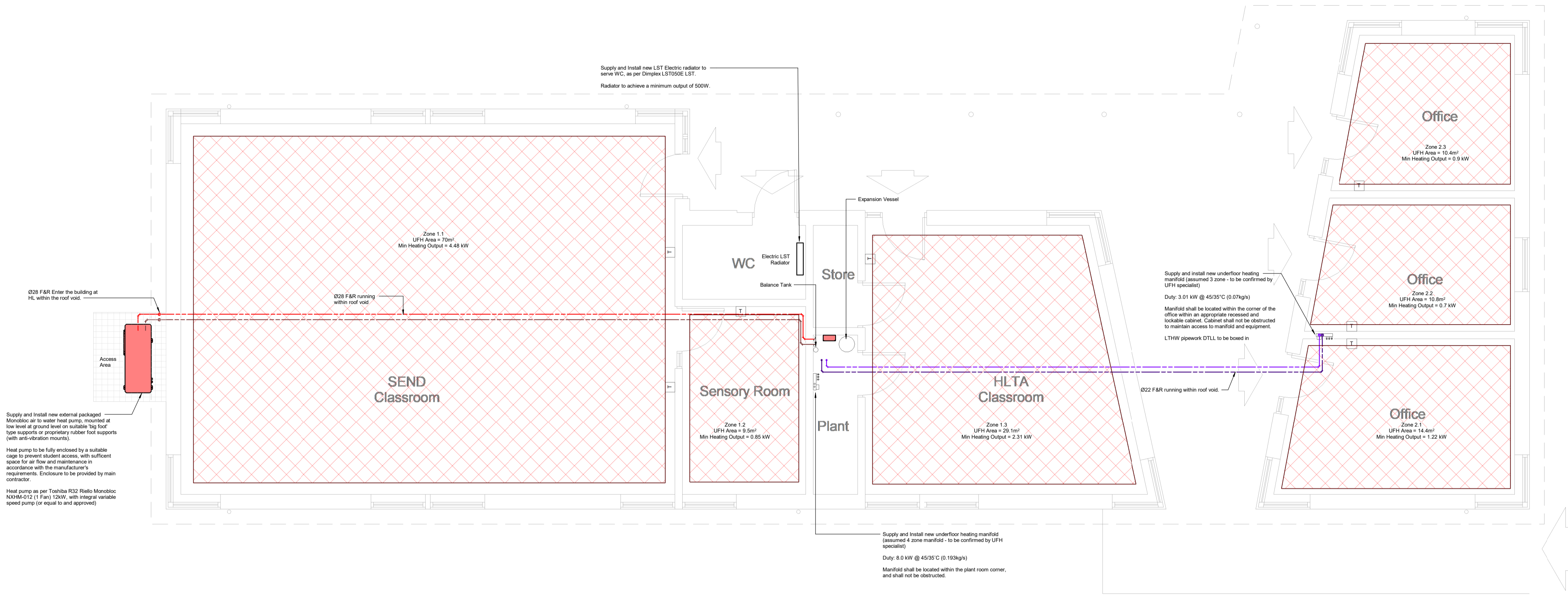
**PROJECT NOTES**

The Contractor shall ascertain the nature of the site, access thereto and all local conditions and restrictions likely to affect the installation. No claim will be considered on the grounds of the lack of site knowledge.

The Contractor shall be responsible for the final coordination of all new and existing services, with the building structure, architecture and fixed furniture and equipment.

The Contractor shall allow for all required changes in height and direction not identified on the drawing and the final setting out of all plant, equipment and services shall be agreed on site with the Engineer.

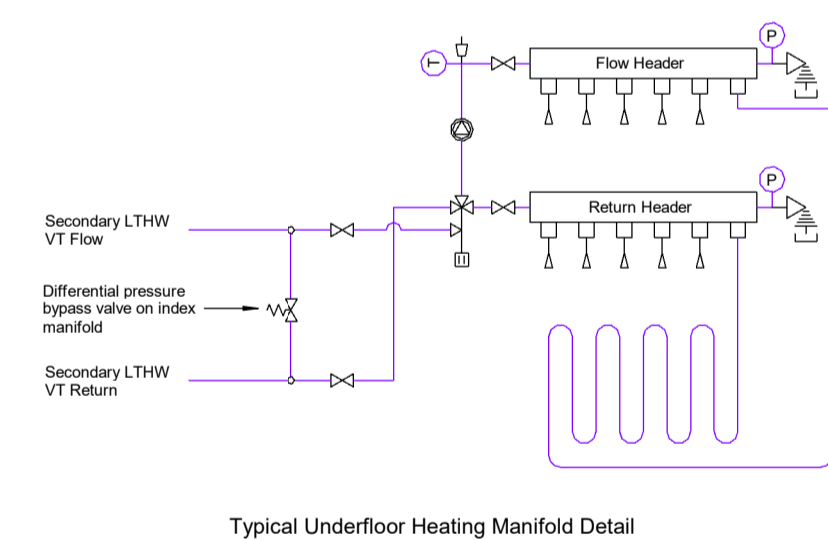
The Contractor shall be responsible for any temporary access or lifting equipment required to carry out the works



Heating Services	
Symbol	Description
	Isolation Valve
	Room Thermostat

General Pipework Annotation	
Symbol	Description
	Services Below Ground
	Services at Low Level
	Services at High Level
	Services Within Ceiling Void
	Capped Connection
	Pipework Continuation
	New LTHW-F Pipework
	New LTHW-R Pipework
	Existing Pipework

Abbreviations	
Abbr.	Description
DTLL	Drop to Low Level
RTA	Rise to Above
RFB	Rise from Below
DTB	Down to Below
CV	Ceiling Void
IV	Isolation Valve



**Low Temperature Hot Water General Notes (Steel Pipework):**

- LPHW heating pipework shall be carried out in kitemarked copper tube to BS EN 1057 grade R250 complete with lead free pre-soldered capillary fittings and brass munson type split ring brackets and rectangular back plates. Compression fittings are permitted for final connections to equipment only.
- Heating pipework within ceiling voids, service risers, service ducts, boxing, plantrooms, etc. shall be insulated with foil faced rigid phenolic foam to achieve a minimum performance of 0.021 W/mK and installed to the thickness identified within BS 5422. Pipework insulation within plant rooms shall be finished with purpose made hammer finished aluminium cladding. Surface mounted pipework shall be finished with two coats of gloss paint to the Architects requirements.
- Drain cocks shall be provided at all low points and equal tee air bottles at high points in accordance with BS 2879. Automatic air vents will be permitted within plant areas only. Inaccessible air vents shall be extended in 15mm copper pipework to low level within nearest accessible plant or store area complete with needle valves.
- All pipework penetrations through walls/floors shall be sleeved with suitably sized sleeves (steel on LPHW pipework services). Those penetrations through fire compartmentation lines shall also be sleeved and finished with intumescent sealant.
- All equipment shall be installed in accordance with relevant manufacturers recommendations and accepted good practice. Valve and union connections shall be provided to isolate all equipment.
- Unless specified all radiators are to be installed with outside tappings and piped 'bottom opposite ends' with thermostatic radiator valves installed on the flow connections and lockshield valves on the return connections.
- All electrical works associated with the mechanical installation shall be carried out by the Electrical Contractor.
- All LPHW heating systems shall be commissioned by an approved reputable commissioning specialist to achieve the flow rates as detailed and shall be witnessed by the Engineer.
- Flushing points to be installed at strategic locations in accordance with the Flushing Strategy.
- Final location of all sensors to be agreed.

P01	Tender Issue	DJ/S/SC	26/02/24
Rev	Description	By/Chk'd/App'd	Date



Client  
**Torbay Council**

Project  
**Paignton Academy - SEND**

Drawing Title  
**Space Heating Services SEND - Heating**

Suitability - Status Code	Suitability - Description	
<b>S4</b>	<b>TENDER</b>	
Internal Project No.	Scale @ A1	Revision
<b>35432</b>	<b>1:50</b>	<b>P01</b>

Drawing Identifier  
Project Code - Originator - Function - Space - Form - Discipline - Number  
**PANSD - BPC - 02 - 00 - D - M - 5602**

www.baileypartnership.co.uk