

TC01191 – Surfacing Term Maintenance Contract – Harwich International Port

Scope of Works

The Surfacing Term Maintenance Contract comprises a 3-year contract to undertake a comprehensive range of work covering the civil engineering infrastructure at Harwich International Port. The Port infrastructure includes, but is not limited to, the following:

- Roads and access ways
- Trailer Parks
- Berths
- Car Parks
- Reclaimed land
- Development land

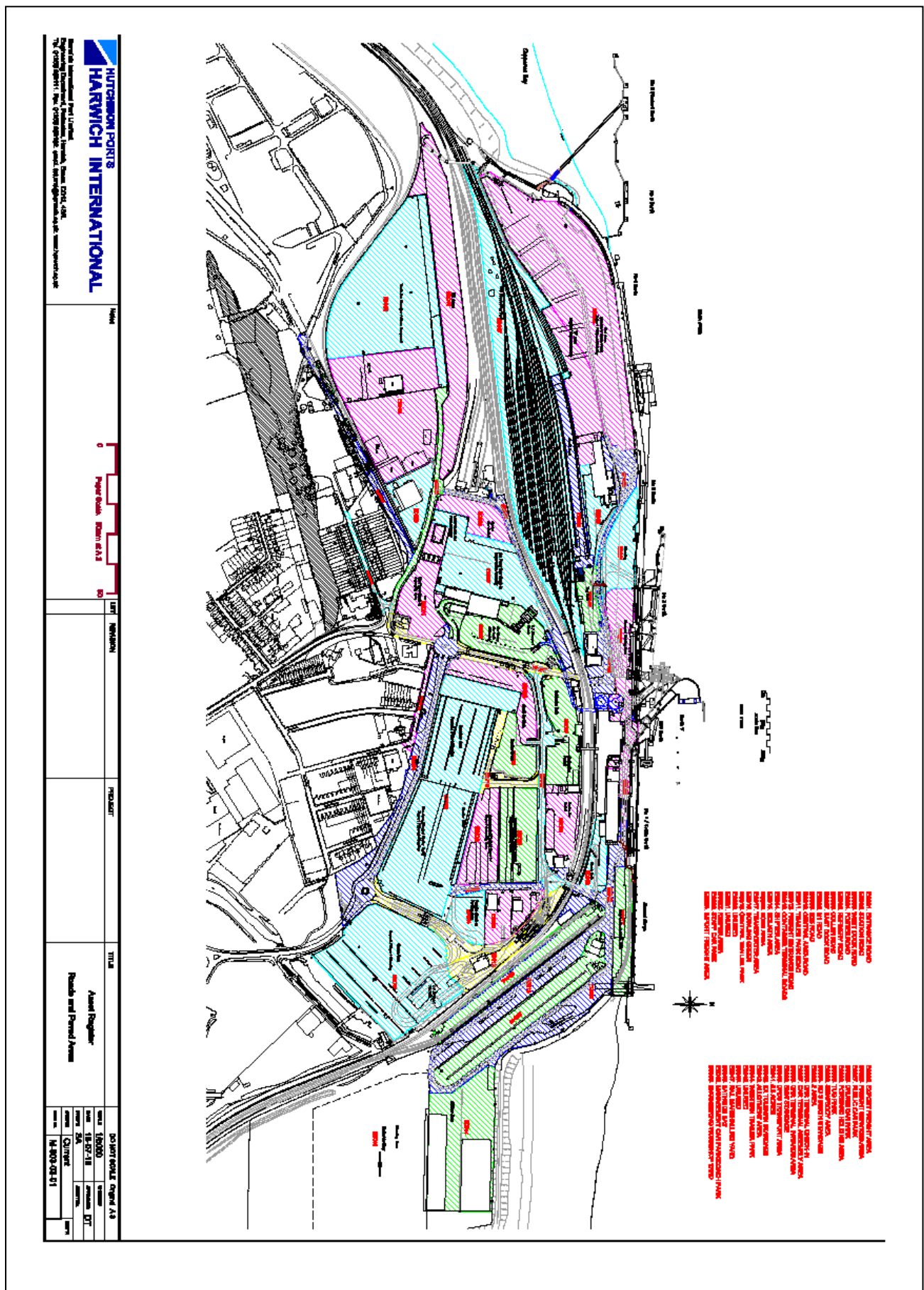
The types of work which will be undertaken include:

- Break Out and Excavation
- Earthworks
- Pavement Construction and Surfacing
- Concrete Works including Formwork and Reinforcement
- Block Paving
- Drainage, Ducts and Underground Pipework
- Mains and Services
- Chambers and Pits
- Roadworks
- Kerbing and the like
- Foundations and Structures
- Road Markings and Studs
- Fencing, Handrails, Barriers and Bollards
- Repairs and Reinstatement
- General Infrastructure Maintenance
- Emergency (non-scheduled) Works

Contract

The contract for the Surfacing Term Maintenance Contract – Harwich International Port will be the JCT Measured Term Contract (MTC) 2016.

Harwich International Port is located at Parkeston, Harwich in the county of Essex.



Key Dates

The PQQ is to be returned 9th April 2021.

It is anticipated tenders will be sent out late April 2021 with the contract commencing mid 2021.

Anticipated Expenditure

The anticipated expenditure for the contract is £750k over the term. This figure is to provide an indication of what might be spent over the term, but is not a guarantee as the spend may fluctuate.