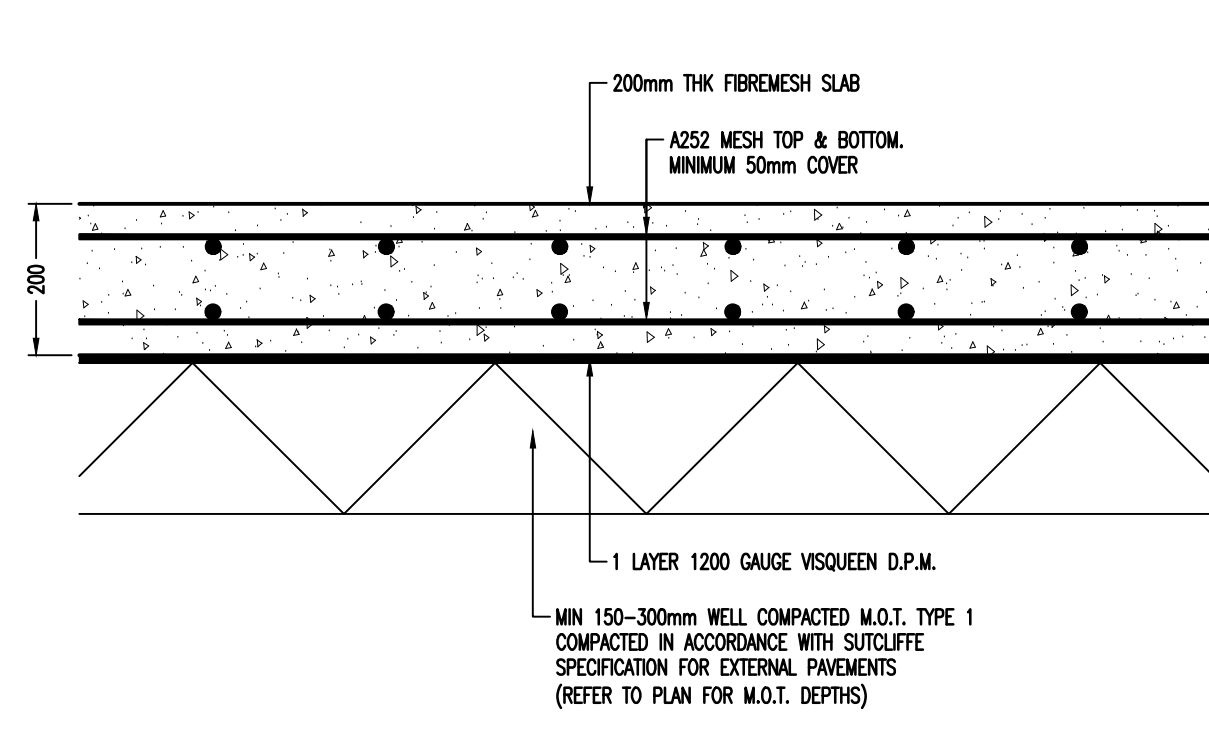
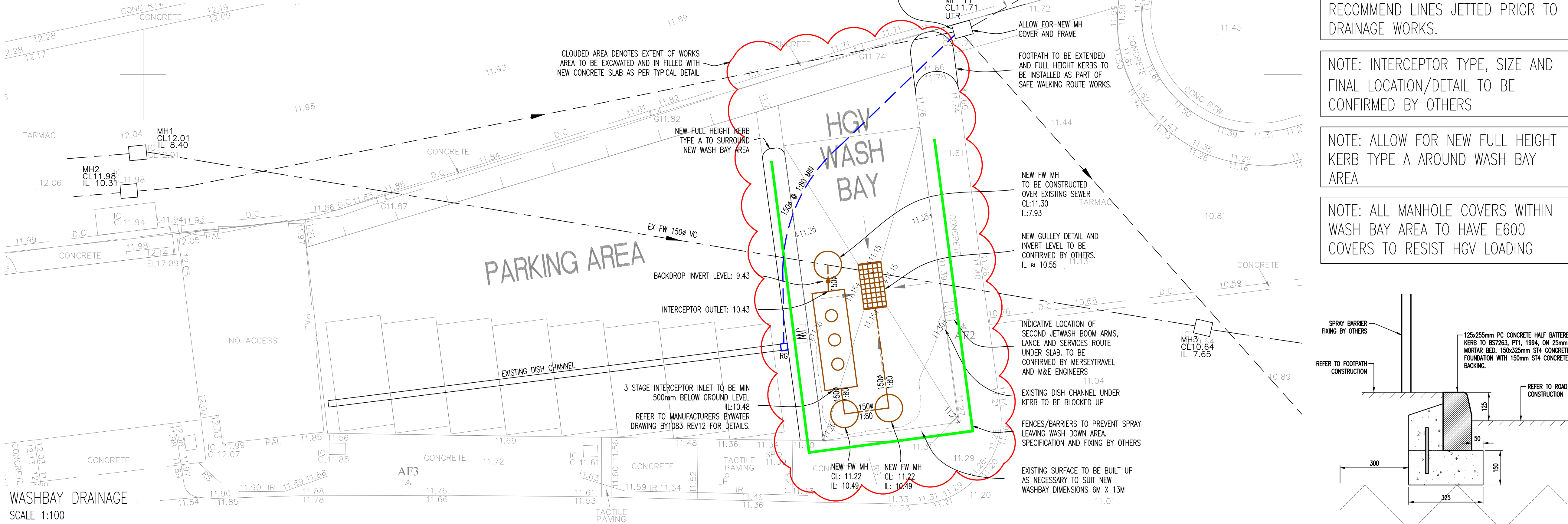


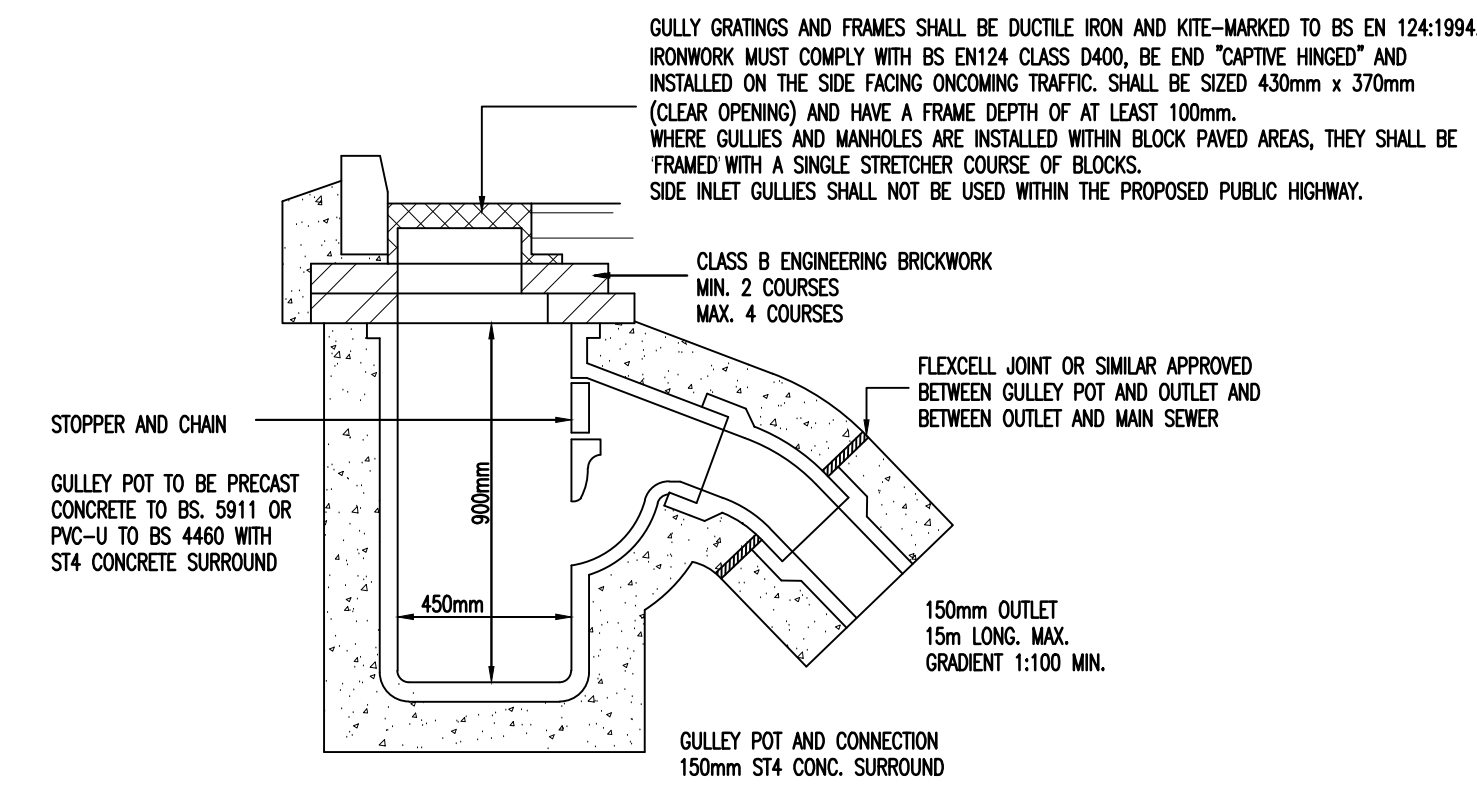
TYPICAL EXPANSION JOINT



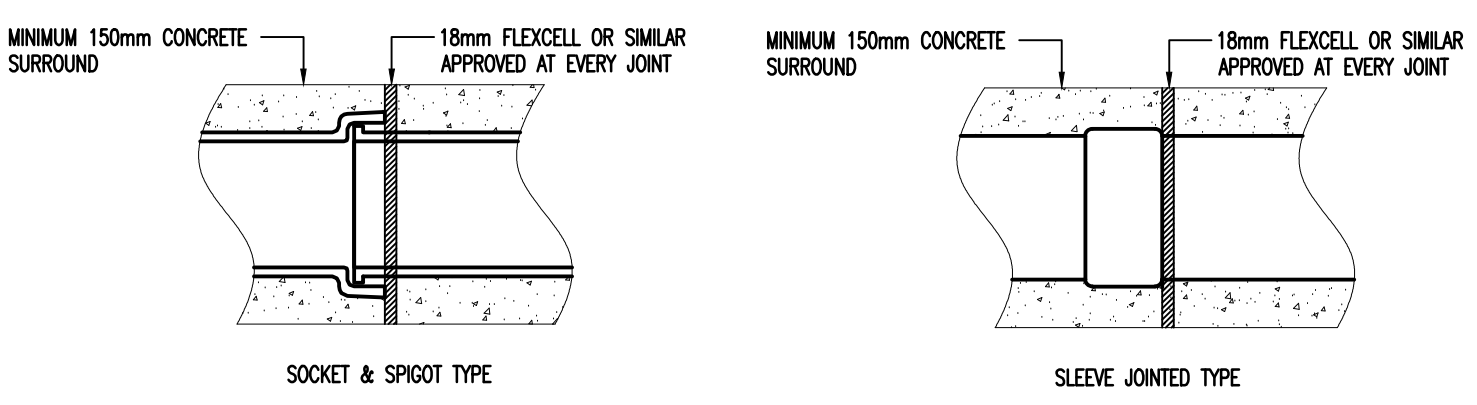
TYPICAL SECTION THROUGH SLAB



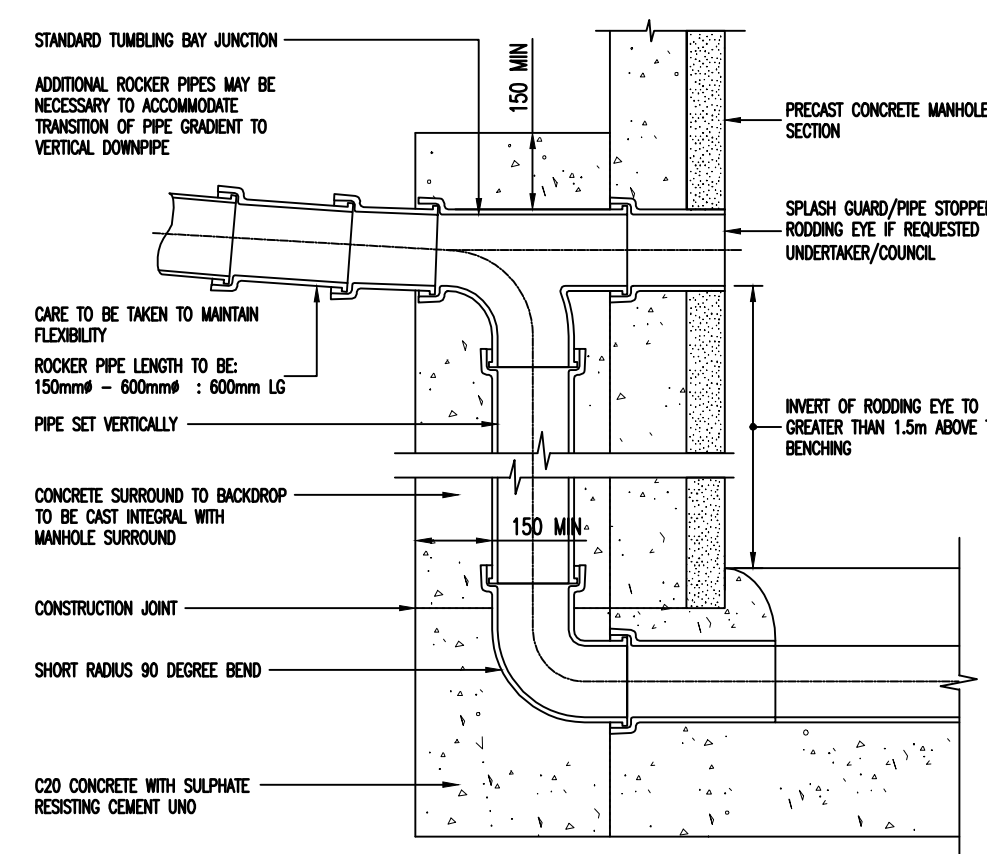
WASHBAY DRAINAGE
SCALE 1:100



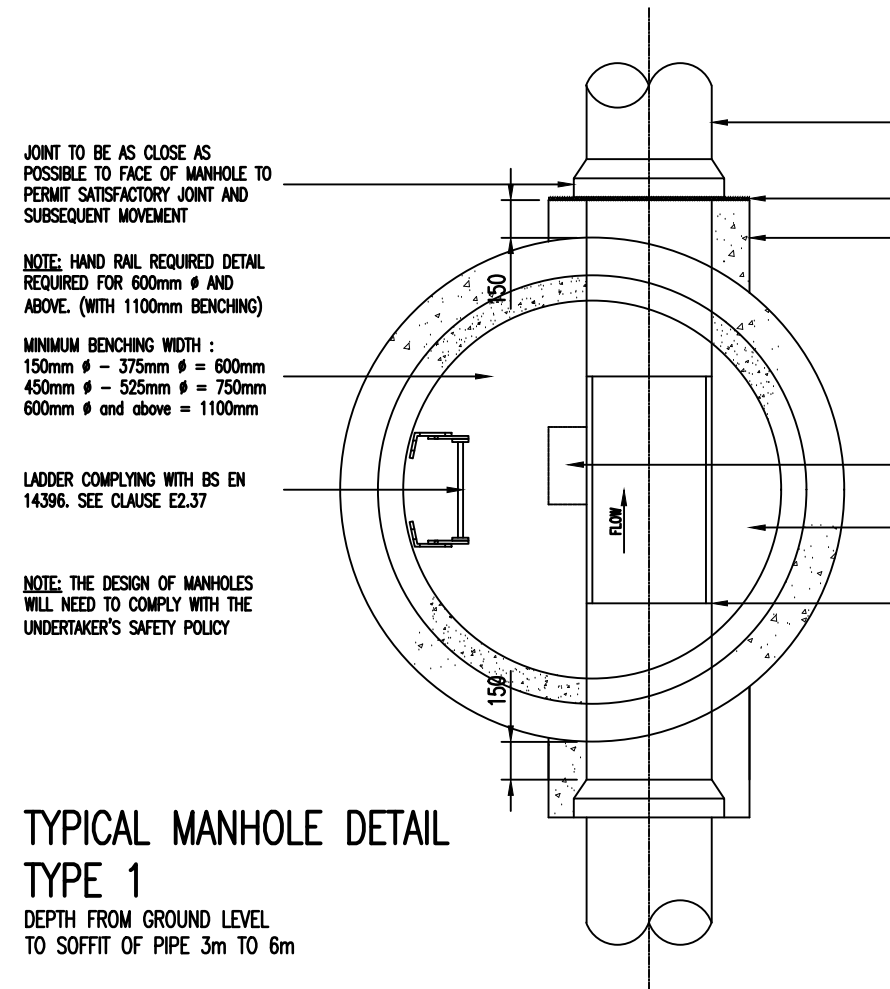
TYPICAL ROAD GULLEY DETAIL



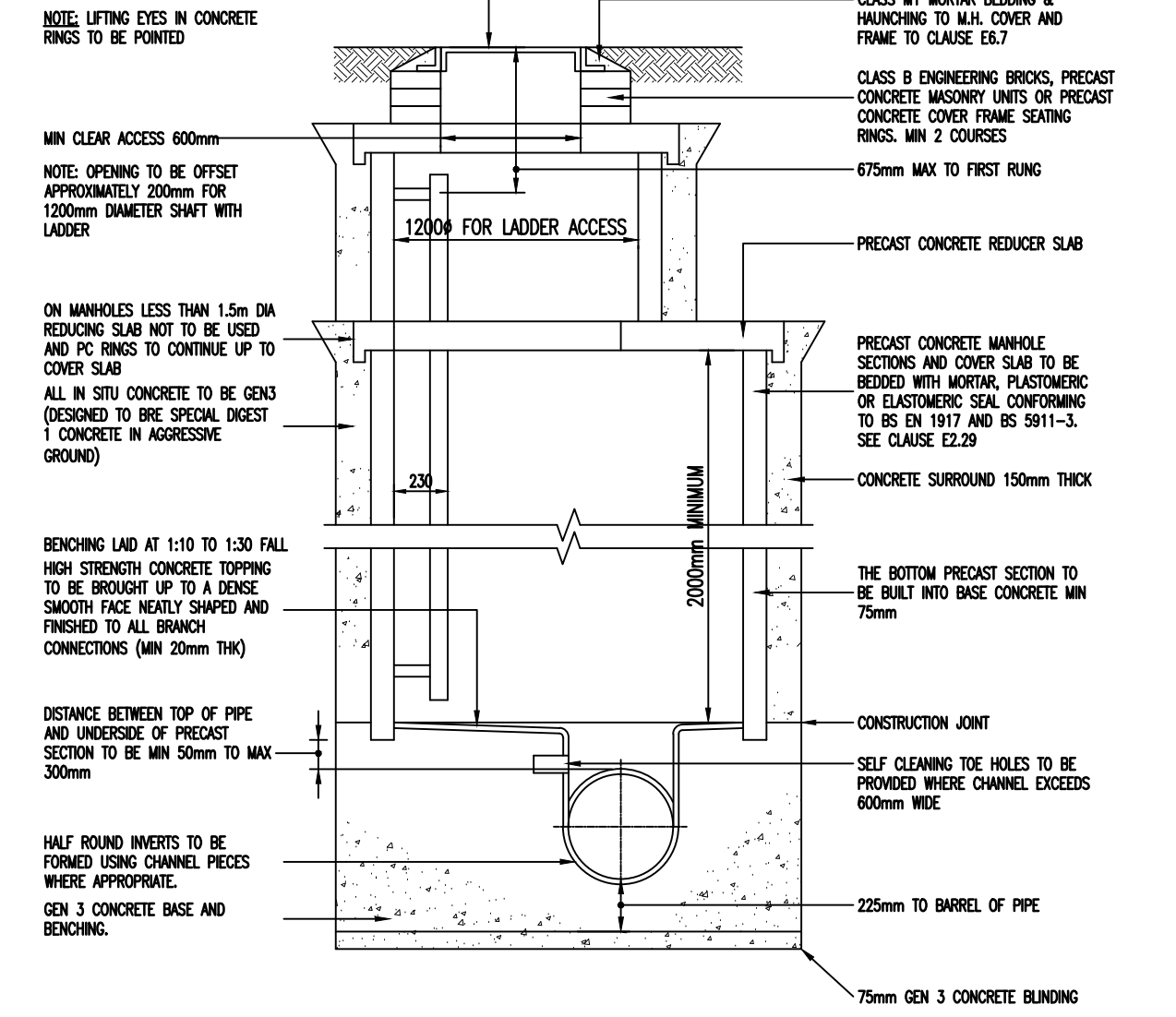
PLAN ON CONCRETE ENCASED PIPES
REQUIRED IN ROADWAYS & OTHER AREAS OF VEHICULAR TRAFFIC WHERE
PIPE COVER IS LESS THAN 900mm (TO SOFFIT OF PIPE)



TYPICAL BACKDROP DETAIL



TYPICAL MANHOLE DETAIL
TYPE 1
DEPTH FROM GROUND LEVEL
TO SOFFIT OF PIPE 3m to 6m



STANDARD KERB (TYPE A)

NOTE: 3 STAGE INTERCEPTOR
REQUIRED BELOW HGV WASH BAY.
REFER TO MANUFACTURERS DRAWING
BYWATER BY1083 REV 12 FOR
DETAILS.

NOTE: MH11 INVERT LEVEL TO BE
CONFIRMED ON SITE PRIOR TO
CONSTRUCTION

NOTE: CCTV SURVEY SHOWS EXISTING
SEWERS HEAVILY SILTED.
RECOMMEND LINES JETTED PRIOR TO
DRAINAGE WORKS.

NOTE: INTERCEPTOR TYPE, SIZE AND
FINAL LOCATION/DETAIL TO BE
CONFIRMED BY OTHERS

NOTE: ALLOW FOR NEW FULL HEIGHT
KERB TYPE A AROUND WASH BAY
AREA

NOTE: ALL MANHOLE COVERS WITHIN
WASH BAY AREA TO HAVE E600
COVERS TO RESIST HGV LOADING

GENERAL NOTES

THIS DRAWING TO READ IN CONJUNCTION WITH ALL RELEVANT
STRUCTURAL AND ARCHITECTURAL DRAWINGS AND SPECIFICATIONS.

ALL DIMENSIONS TO BE CHECKED ON SITE BY THE CONTRACTOR /
FABRICATOR PRIOR TO COMMENCEMENT OF WORKS.

ALL DIMENSIONS ARE IN MILLIMETRES UNLESS STATED OTHERWISE.

ALL WORKS TO BE CARRIED OUT IN STRICT ACCORDANCE WITH THE
ENGINEER'S SPECIFICATIONS, RELEVANT BRITISH STANDARDS AND
WHERE APPLICABLE LOCAL AUTHORITIES REQUIREMENTS.

FOR FINAL SETTING OUT INFORMATION RELATING TO GRID LINES AND
WALL POSITIONS REFER TO THE ARCHITECT'S DRAWINGS.

ALL FLOOR LEVELS TO BE CONFIRMED BY CONTRACTOR PRIOR TO
CONSTRUCTION

ALL COVER LEVELS TO BE CONFIRMED BY CONTRACTOR PRIOR TO
CONSTRUCTION

PROPOSED DRAINAGE

OUTSIDE EDGE OF ADOPTED SEWER SHALL NOT ENCR OACH WITHIN
1M OF KERB FACE.
OUTSIDE EDGE OF ADOPTED MANHOLES SHALL NOT ENCR OACH
WITHIN 0.5M OF KERB FACE.

ALL DRAINAGE IN HIGHWAYS/CAR PARKING AREAS/DRIVEWAYS LESS
THAN 1.2M DEEP TO BE CONCRETE ENCASED.

ALL PPIC'S GREATER THAN 1.2M DEEP TO HAVE REDUCED ACCESS
COVERS TO PREVENT MAN ENTRY.

SURFACE WATER DRAINAGE:
ALL PRIVATE SURFACE WATER DRAINAGE TO BE 100MM Ø AT 1:80
GRADIENT UNLESS NOTED OTHERWISE.
ALLOWANCE TO BE MADE FOR DRIVEWAY GULLIES AND ASSOCIATED
DRAIN RUNS WHERE APPLICABLE

FOUL WATER / COMBINED DRAINAGE:
ALL UNDERSLAB FOUL WATER DRAINAGE TO BE 100MM Ø AT 1:40
GRADIENT UNLESS NOTED OTHERWISE ALL OTHER PRIVATE FOUL
WATER DRAINAGE TO BE 100MM Ø AT 1:80 GRADIENT UNLESS
NOTED OTHERWISE

KEY

- NEW COMBINED DRAIN/SEWER
- EXISTING COMBINED DRAIN/SEWER
- NEW SURFACE WATER DRAIN/SEWER
- EXISTING SURFACE WATER DRAIN/SEWER
- NEW FOUL WATER DRAIN/SEWER
- EXISTING FOUL WATER DRAIN/SEWER
- NEW MANHOLE / PPIC
- REFER TO PLAN FOR SIZE
- EXTG. MH
- IL: XXX
- IL: XXX
- RWP
- EX G
- RG
- EXISTING MANHOLE/ACCESS CHAMBER
- RAINWATER PIPE LOCATION
- EXISTING ROAD GULLEY
- NEW ROAD GULLEY
- WASH BAY SPRAY BARRIERS

T1	04.12.19	AP	TENDER ISSUE	MJG
Rev	Date	Checked	Description	By

TENDER DRAWING

Sutcliffe
18-20 Harrington Street, Liverpool L2 9QA
t: 0151 227 3155 f: 0151 227 3156
e: sutcliffe@sutcliffe.co.uk w: www.sutcliffe.co.uk

Client
MERSEYTRAVEL

Project
**KINGSWAY TUNNEL APPROACH
WALLASEY**

Drawing title
**PROPOSED WASH BAY
LAYOUT**

Scale at A1	AS SHOWN	Drawing number	30015-620
Drawn by	MJG	Revision suffix	T1
Date	MAY 19		