

GENERAL NOTES

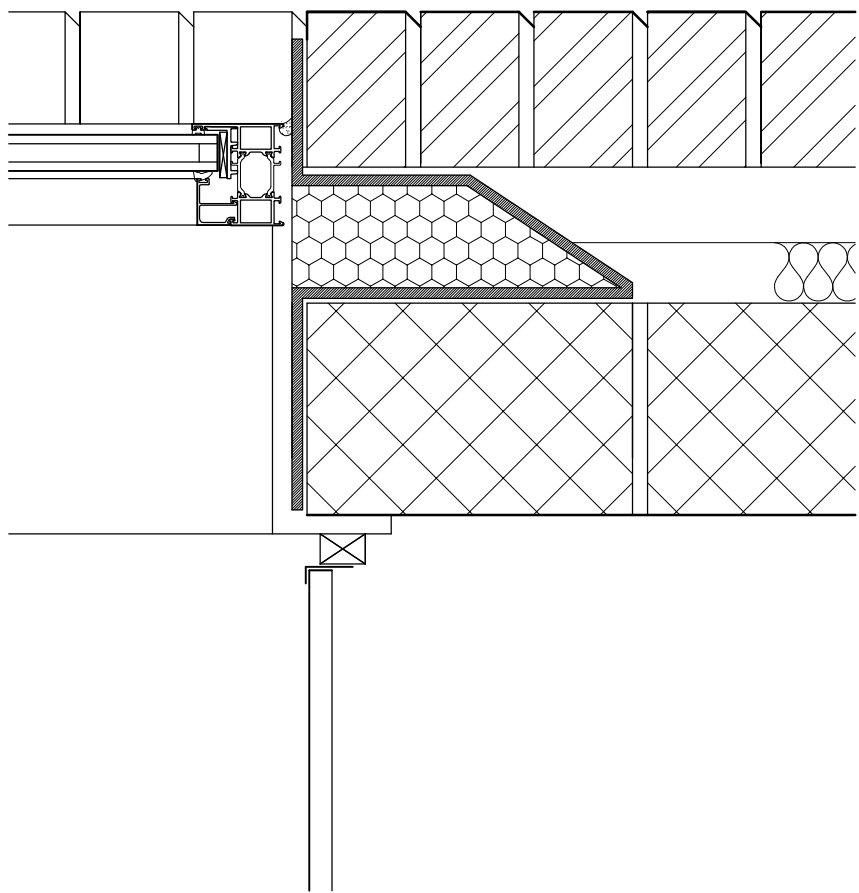
THE CONTRACTOR IS ADVISED TO VISIT THE SITE PRIOR TO TENDERING & ASCERTAIN ALL LOCAL CONDITIONS & RESTRICTIONS AFFECTING THE ERECTION OF THE ACCESS AND CLAIMS ARISING FROM FAILURE TO DO SO WILL BE CONSIDERED. THIS DRAWING IS TO BE READ IN CONJUNCTION WITH ALL OTHER DRAWINGS & SPECIFICATIONS RELATING TO THE PROJECT AND ANY DISCREPANCIES NOTIFIED TO THE CONTRACT ADMINISTRATOR IMMEDIATELY.

THE CONTRACTOR IS TO CHECK ALL DIMENSIONS ON SITE PRIOR TO SCALE OFF DRAWINGS.

ALL WORKMANSHIP AND MATERIALS TO COME X WITH BUILDING REGULATIONS, BRITISH STANDARDS, CODES OF PRACTICE, MANUFACTURERS' CERTIFICATES ETC. ALL MATERIALS SHALL BE SUPPLIED FOR APPROVAL.

THE CONTRACTOR IS TO MAKE GOOD ALL WORKS DISTURBED.

THE CONTRACTOR TO COMPLY WITH CDM REGULATIONS AND HEALTH AND SAFETY REQUIREMENTS WHERE APPROPRIATE.



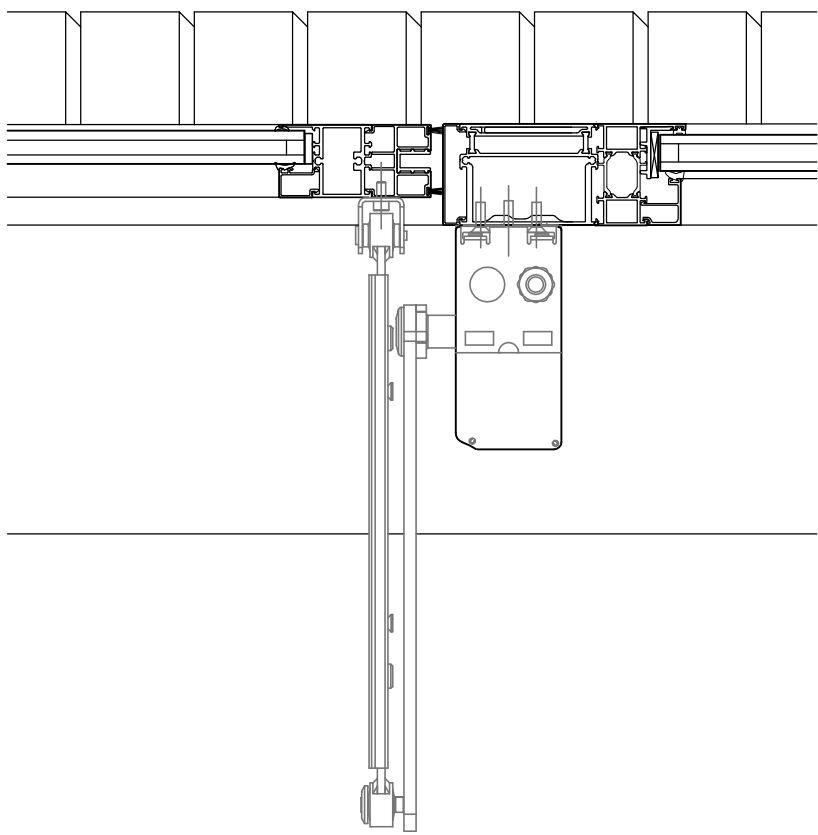
AUTOMATIC DOOR EQUIPMENT (ED03)

Model: SW300-1-70mm single direction heavy duty electro-mechanical door operator installed to comply with EN16005:2012. Complete with SAS1 uni-directional combined motion sensing radar entry & exit activator, SP33-M active infrared presence sensor, 'Push and Go' manual push button and external safety barrier to prevent cross traffic manufactured by:-

ASSA ABLOY Entrance Systems Ltd, Unit 9, Windmill Business Village, Sunbury-on-Thames, Middlesex, TW16 7DY - Tel: 0333006 3443.

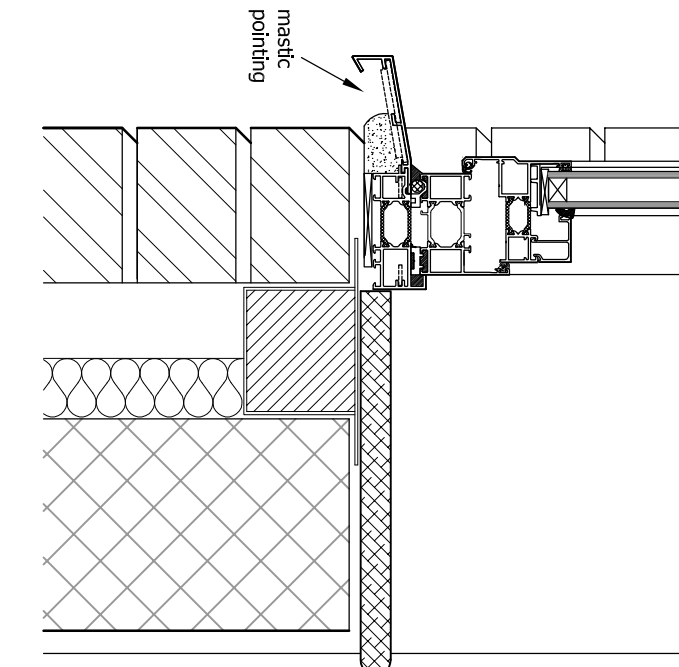
Entrance door actuated by presence sensor externally with link to access controls (by others) for out of hours use and switchable pushpad/presence sensors internally.

Door operable to have multi-position key switch over-ride as required to British Standards, mechanical lock and emergency breakout facility. Finish to be polyester powder coat colour T.B.C.

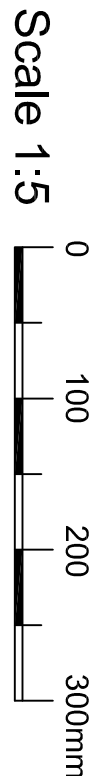


Windows to be glazed with EPDM gaskets. Double glazed to Kawneer UK Ltd specification to comply with Part L2A.

NEW ALUMINIUM WINDOWS



TYPICAL SECTION THROUGH ALUMINIUM WINDOWS



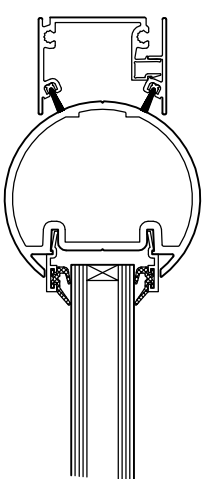
NEW ALUMINIUM DOORS

Generally Kawneer 190 commercial door system, either glazed or louvred as detailed, aluminium welded doors with fanlight over.

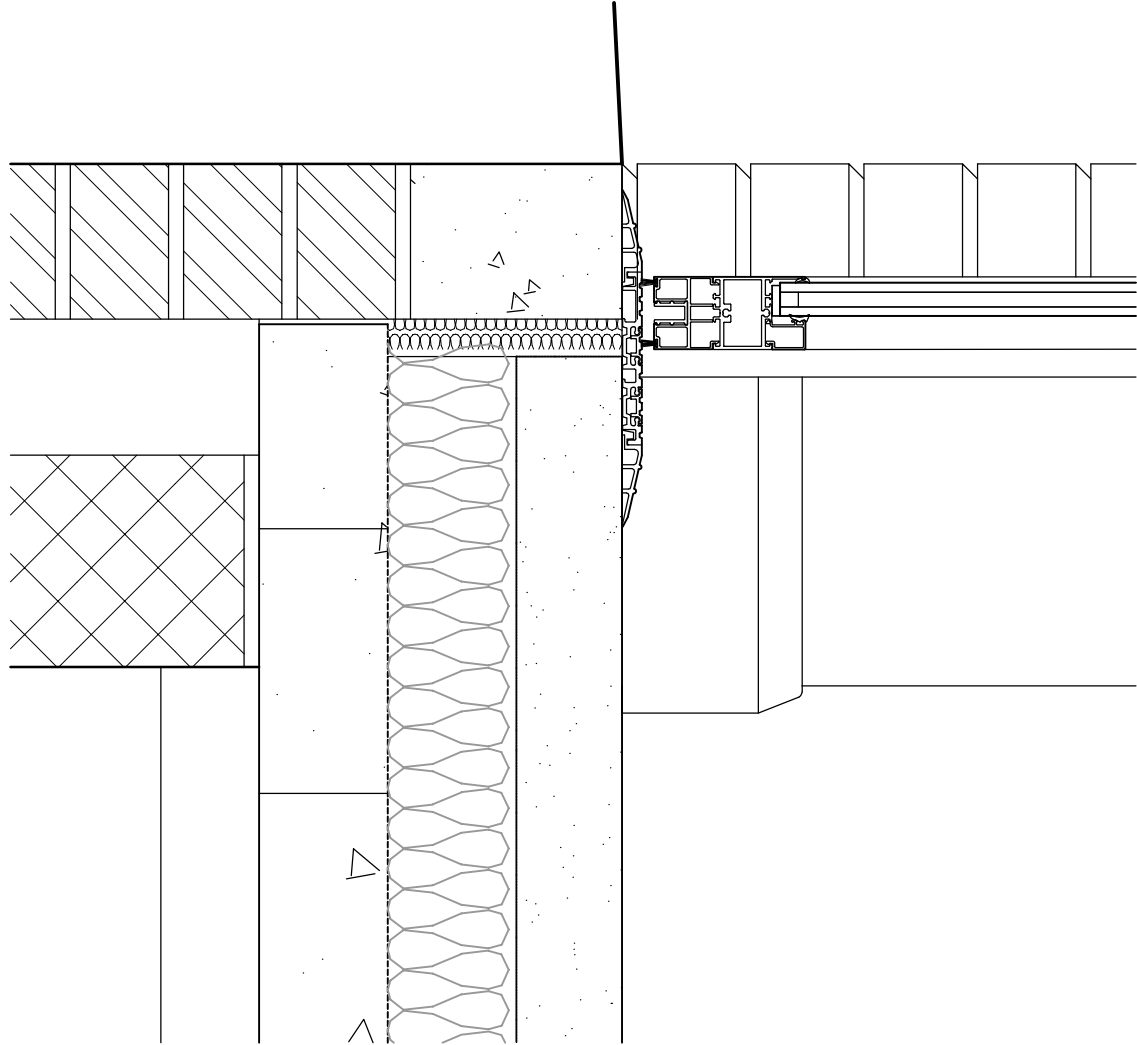
Doors to be glazed with EPDM gaskets. Double glazed to Kawneer UK Ltd specification to comply with Part L2A.

To be fitted with:-
Adams-Rite combination maximum security hook lock. Europrofile cylinders.
Top & bottom shoot bolts to slave leaf.
Overhead concealed closers AXIV (20 kN max force with hold open option) with bottom pivot. Powder coating as BS 6496 min film thickness 40 microns.

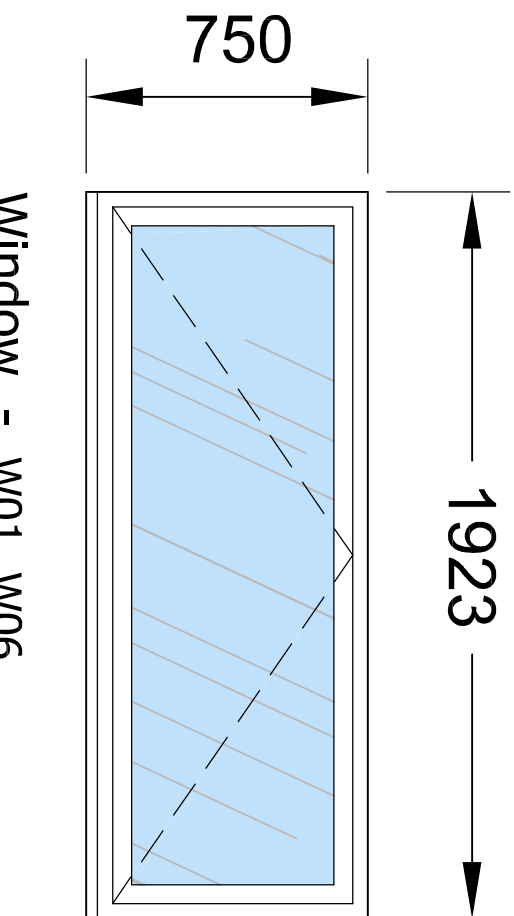
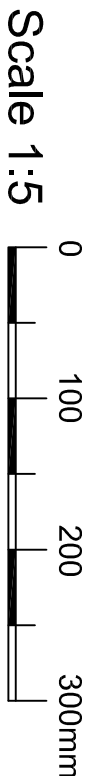
Threshold to comply with Document M Building Regulations.
Include for rounded jamb stile Finger Guard To have unequal leaf sizes and be fitted with circular tube plastic coated handles.



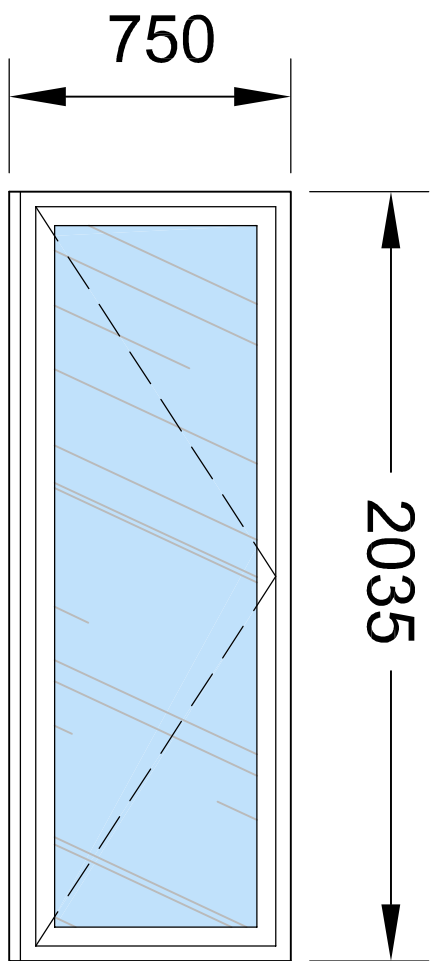
Typical Finger Guard Arrangement



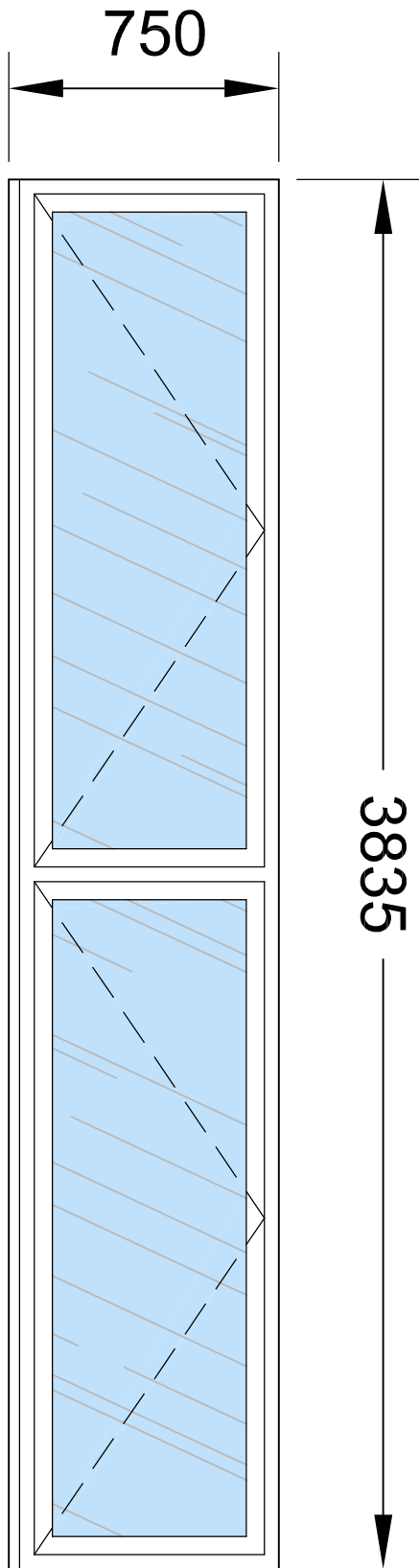
TYPICAL SECTION THROUGH EXTERNAL ALUMINIUM DOOR



Window - W01, W06



Window - W02

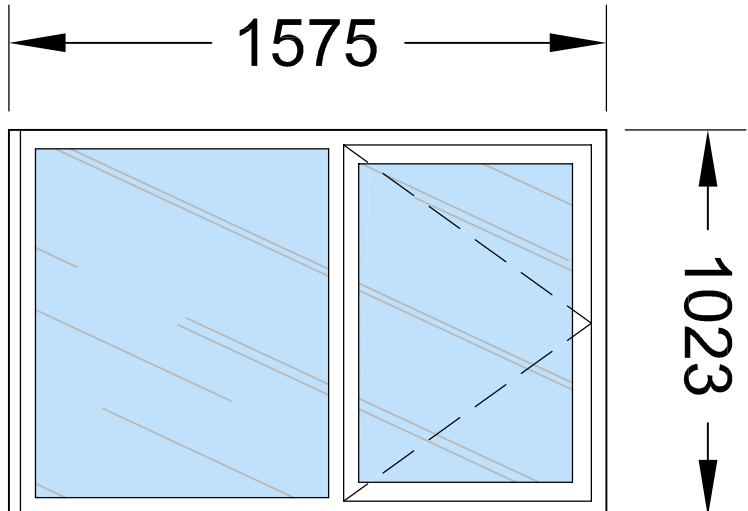


Window - W03

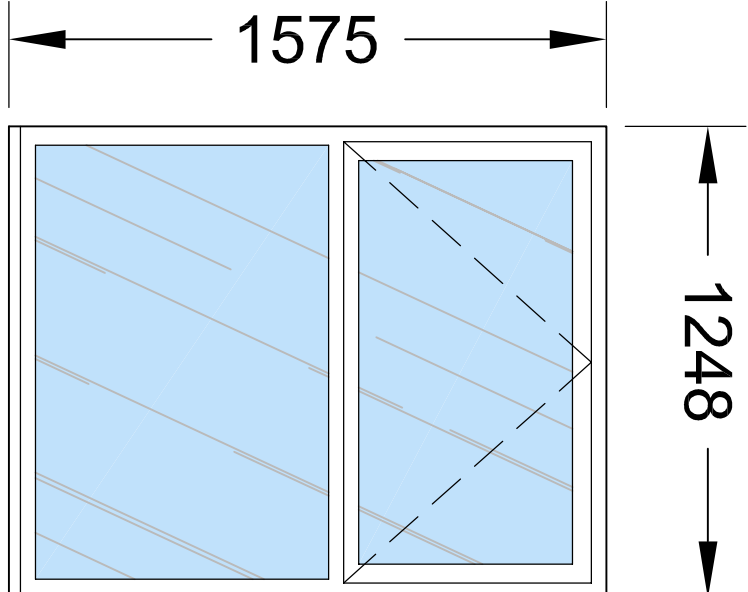
ALUMINIUM WINDOWS



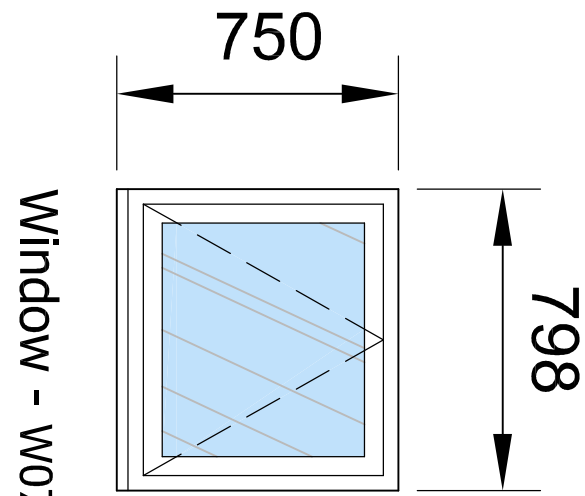
Scale 1:20



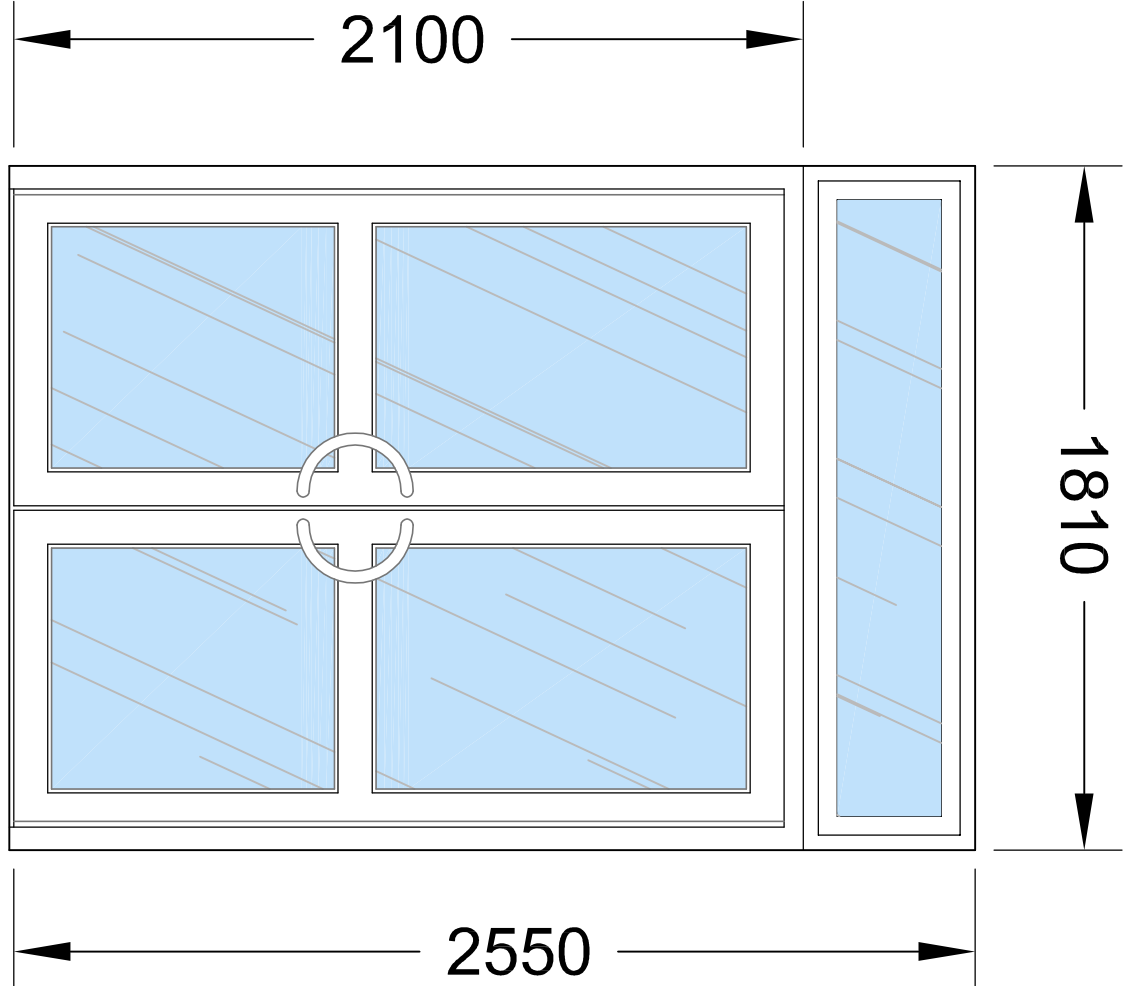
Window - W04



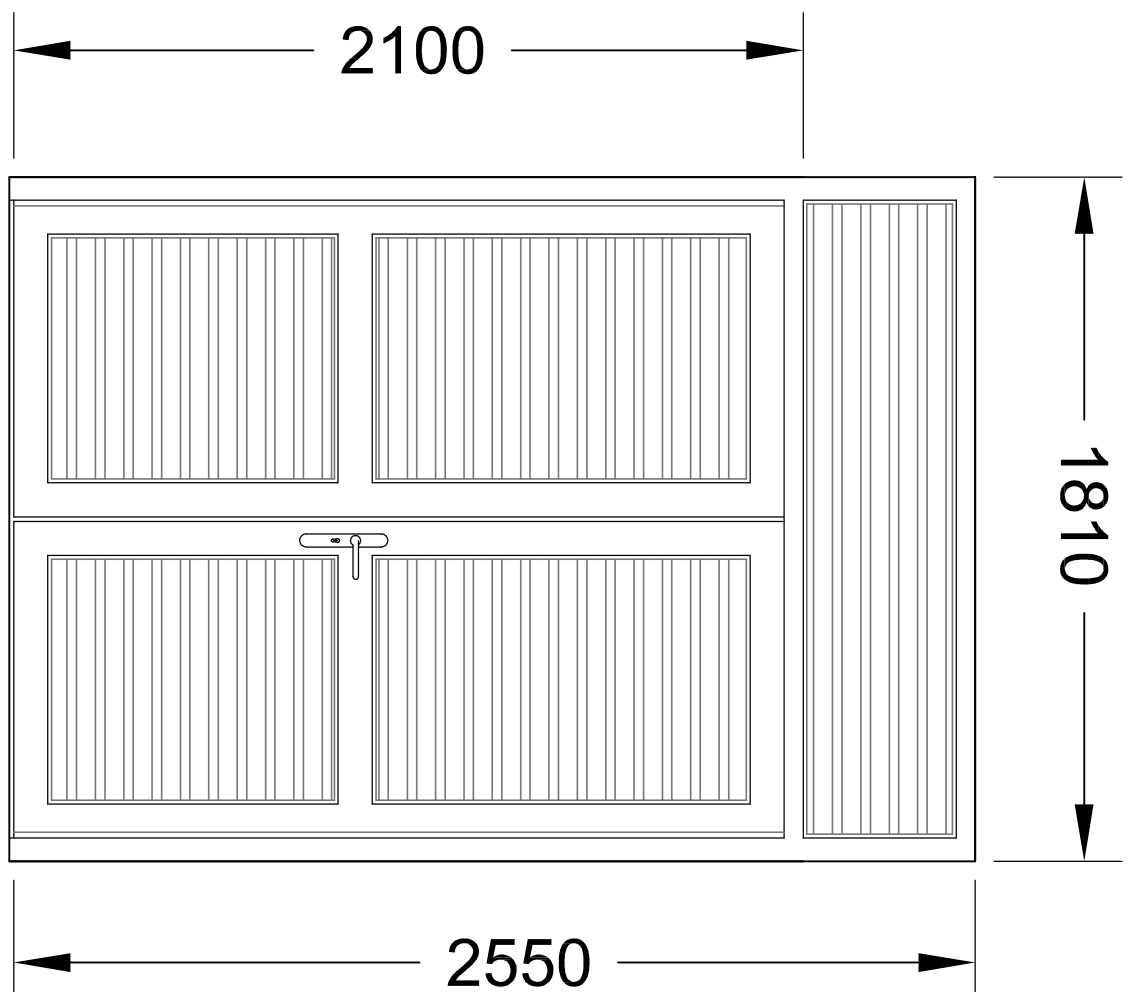
Window - W05



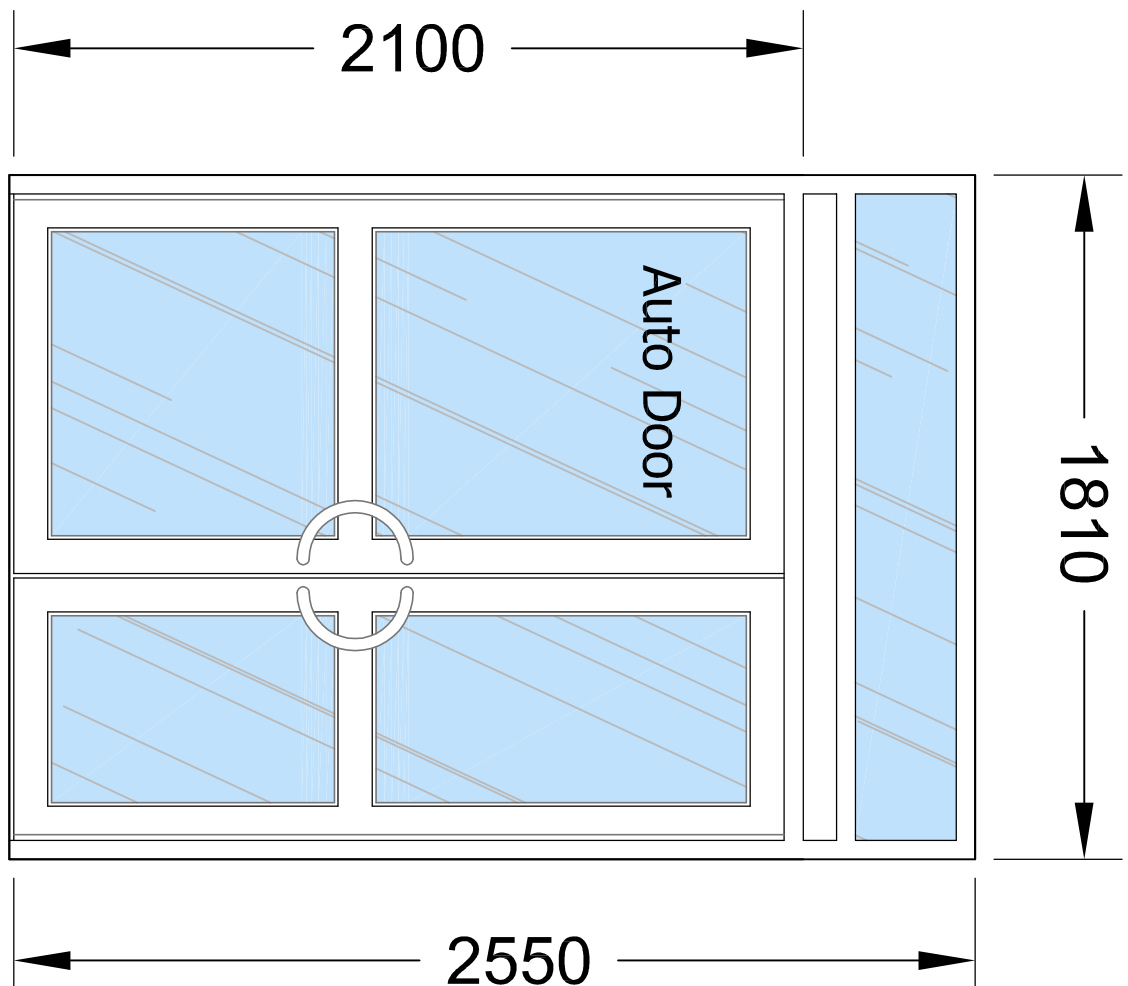
Window - W07



External Door - ED01

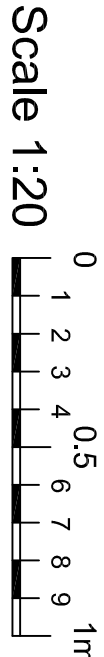


External Door - ED02, ED04



External Door - ED03

EXTERNAL ALUMINIUM DOORS



Scale 1:20

EXTERNAL WINDOWS AND DOORS

DRAWING TITLE:

ELMS BANK SPECIALIST ARTS COLLEGE
RIPON AVENUE, WHITEFIELD. M45 8PJ
HYDROTHERAPY POOL & CHANGING

PROJECT TITLE:

Bury Prehistoric Facilities Remodelling - Trestleton - Whitefield

Department for
Resources & Regulation
Architectural Services
Bury Council
3 Knowsley Place,
Duke Street, Bury, Lancs. B9 9EB
Tel: 0161 253 6989
Fax: 0161 253 6153
Web: www.bury.gov.uk

This design/document has been prepared by Bury MBC Architectural Services. It is the property of Bury MBC and shall remain their property. It is to be used for the project for which it was originally intended.

Tender Issue

REV / DESCRIPTION DATE

DRAWN BY: NB DATE: 1/18 ISSUE NUMBER:

CHECKED BY: RJV DATE: 1/18 DATE OF ISSUE:

SCALE: as noted @ A1

DRAWING NUMBER:

E 17301 A 10