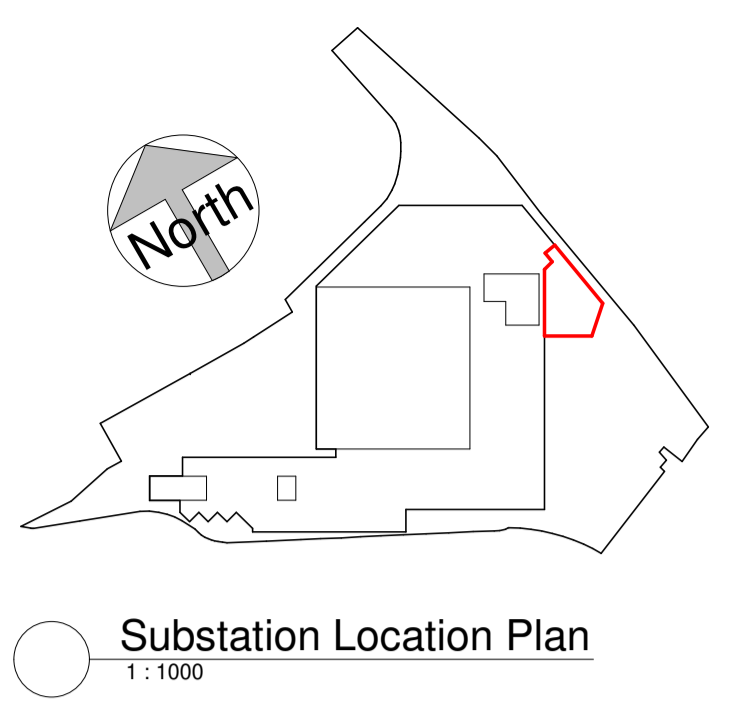


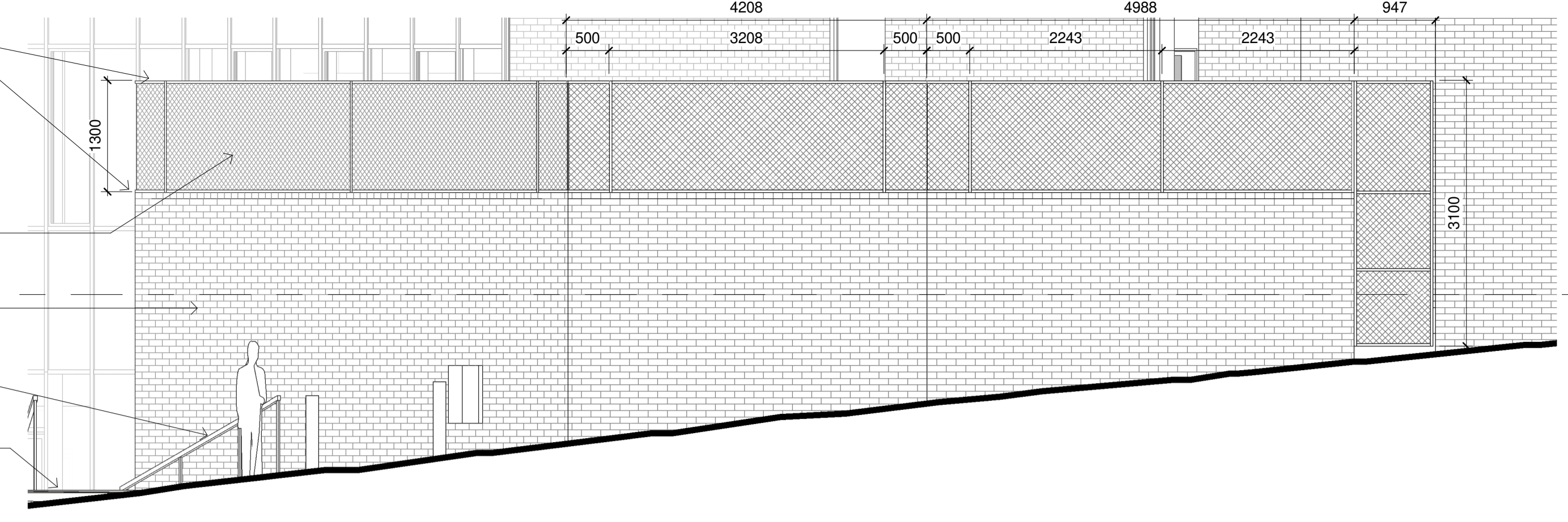
1 Substation Roof Screen - Plan View
1:50



Substation Location Plan
1:1000

PPC steel top & base rails with intermediate posts - to manufacturers information Colour = RAL 7022
Perforated powder coated aluminium panels colour = RAL 7022
Existing pink brick
Existing stainless steel handrail
Existing external steps

3 Substation Roof Screen - Elevation 01
1:50



First Floor
84400

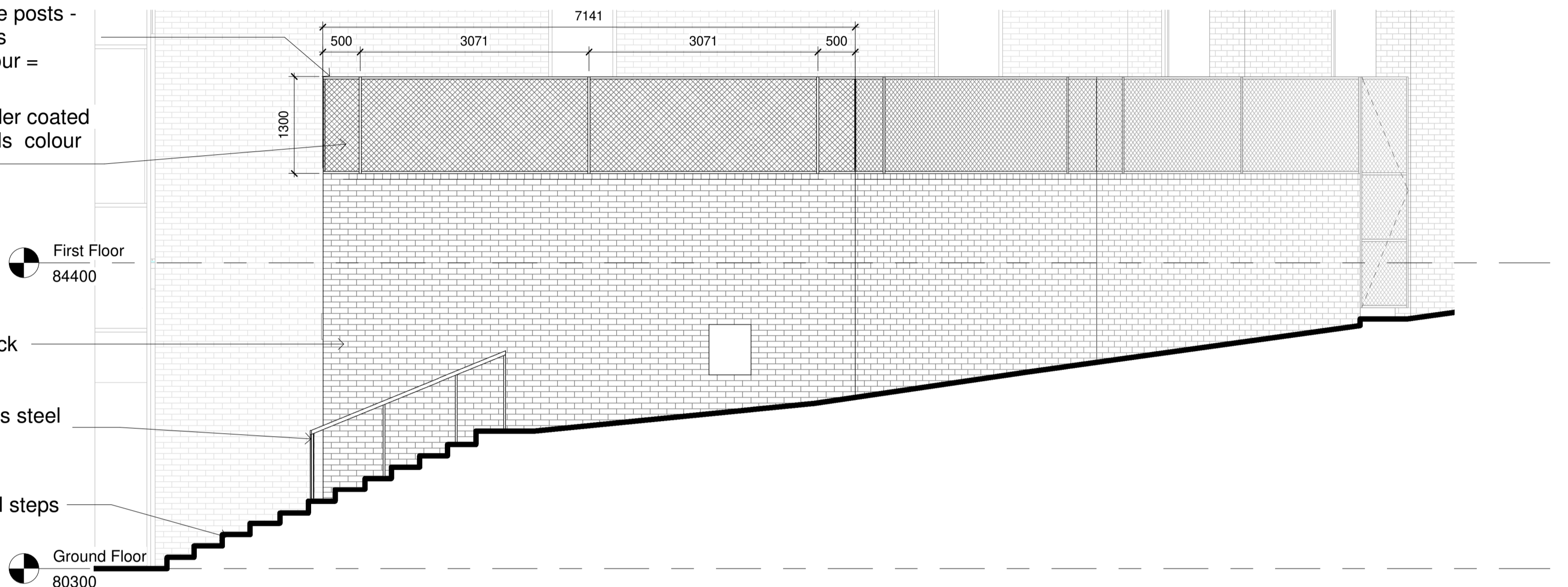
PPC steel top & base rails with intermediate posts - to manufacturers information Colour = RAL 7022
Perforated powder coated aluminium panels colour = RAL 7022

First Floor
84400

Existing pink brick
Existing stainless steel handrail
Existing external steps

Ground Floor
80300

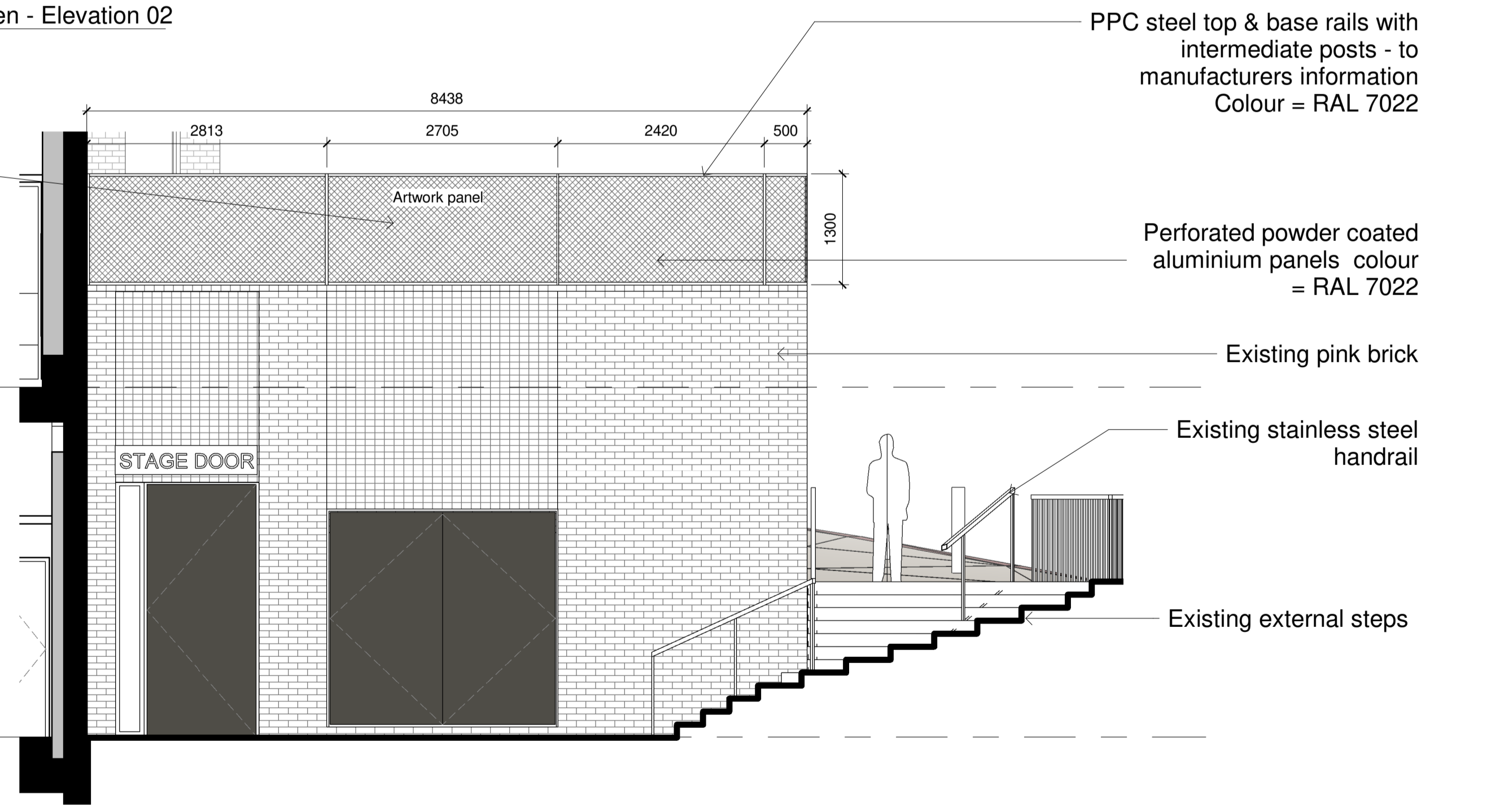
4 Substation Roof Screen - Elevation 02
1:50



First Floor
84400

Ground Floor
80300

5 Substation Roof Screen - Elevation 03
1:50



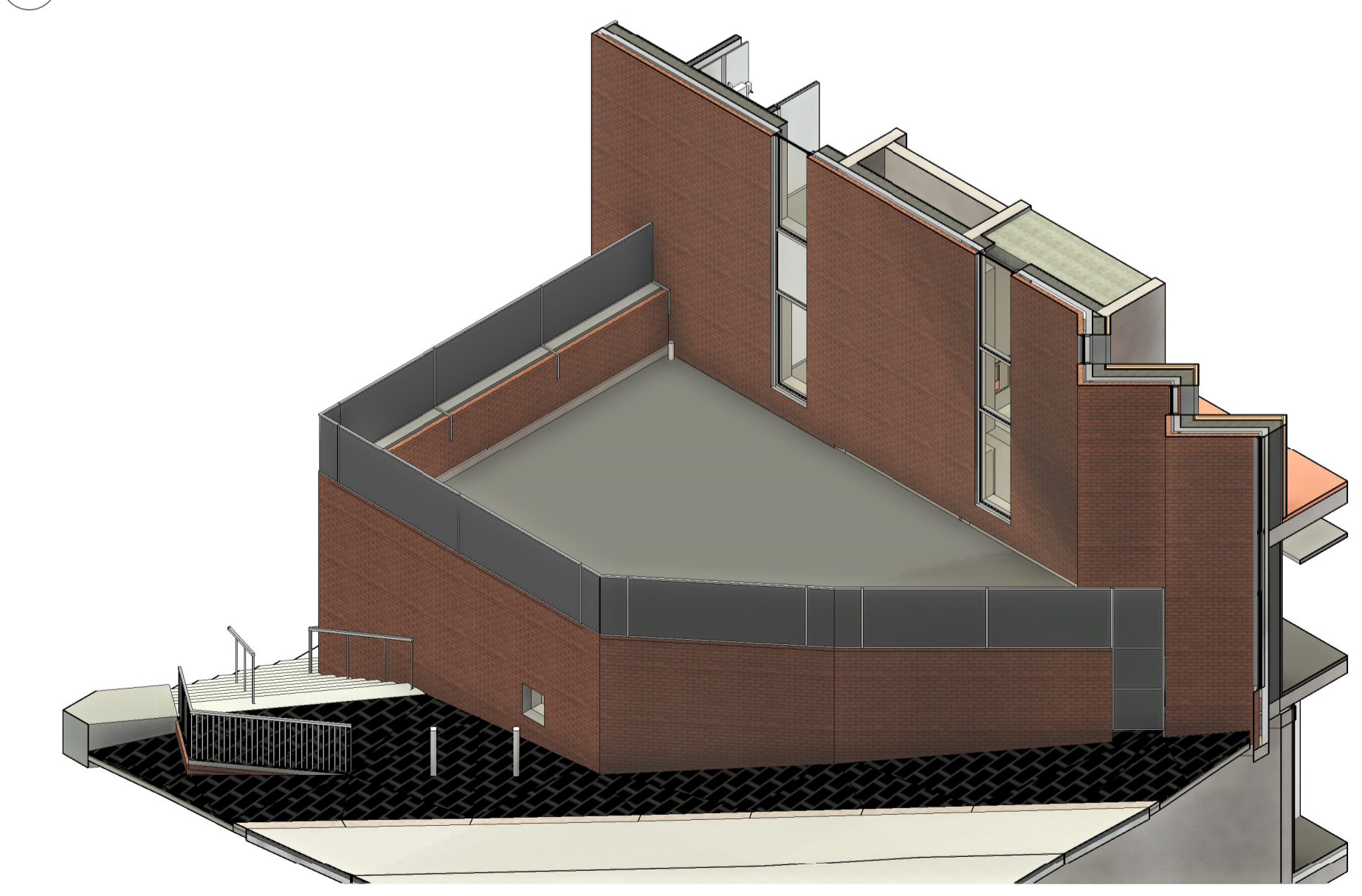
PPC steel top & base rails with intermediate posts - to manufacturers information Colour = RAL 7022

Perforated powder coated aluminium panels colour = RAL 7022

Existing pink brick

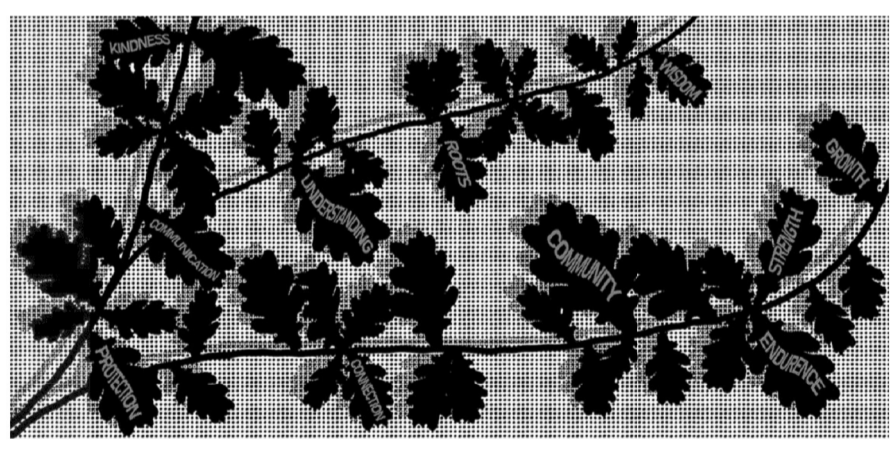
Existing stainless steel handrail

Existing external steps



2 Substation Roof Screen - 3D View

Draft example of artwork for perforated metal panels to the central panel over door - as noted above.
Final artwork TBC - this example is only a placeholder



Perforated panels to be 8mm Round Hole 11mm pitch. PPC to RAL 7022. Panels to be flush with edge of steel frame. No perforations at edges where panels to be fixed to frame.
Anti-climb and anti-vandal fixings.
Contractor to allow for local wind loading conditions and indicate proposals for fixings

Rev	Description	Drawn/Chkd	Date Issued
P1	Issued for planning	MA/PM	22.04.2024

DO NOT SCALE. Use figured dimensions only. The contractor is requested to check all dimensions before the work is put in hand. © All copyrights Austin-Smith Lord Ltd. This drawing must only be used for the purpose for which it is issued and its contents must not be reproduced for any purpose without written permission. No areas indicated, or areas calculated from this drawing should be used for valuation purposes or as the basis for development contracts.
Austin-Smith Lord Ltd is a limited company registered in England & Wales with registered number 11775049 Registered Office: Port of Liverpool Building, Pier Head Liverpool L3 1BY

Drawn MA
Architects Designers Planners
Landscape Architects
Port Of Liverpool Building
Pier Head, Liverpool
L3 1BY
t +44 (0)151 227 1083
e liverpool@austinsmithlord.com
Status PLANNING
Drawings and models generated by Austin-Smith Lord Ltd BIM using AutoDesk Revit

Austin-Smith:Lord
Project Shakespear North
Description Substation Roof Screen
Job No. 123023-ASL-00-FF-DR -A.0900
Drawing No. 123023-ASL-00-FF-DR -A.0900
Revision P1