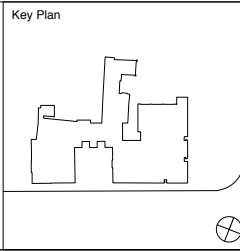


Do not scale drawings  
All dimensions are in millimetres unless stated otherwise  
Use figured dimensions only and report any discrepancies in writing to the architect

Key	
	Below ground
	Concrete blockwork
	Reinforced concrete
	Evac Chair
	Fire curtain (30min)
	Illuminated fire exit sign
	Directional fire exit sign
	Emergency voice communications panel
	Aspirating smoke detection system control panel
	Interface unit
	Fire alarm panel
	Short circuit isolator
	Junction box
	Disabled refuge outstation
	Magnetic door release
	Fire alarm horn sounder
	Wall mounted visual beacon
	Wall mounted fire alarm sounder
	Remote indicator for detection device
	Emergency light
	Smoke detector (photo optical or ionisation type) combined with visual beacon and sounder
	Heat detector (high temp fixed temperature) combined with visual beacon and sounder
	Fire alarm break glass unit
	Water fire extinguisher (9 litres)
	Carbon dioxide fire extinguisher (2 Kg)
	Foam fire extinguisher (9 litres)

General Notes:  
- The fire strategy and associated equipment in the area of the Museum unaffected by the works (generally to the left of the 30 min fire compartmentation that separates the East Wing from the rest of the Museum) remains as existing  
- Generally refer to services engineer's drawings and NBS specification for further information (type of emergency light fittings, etc)



Rev	Description	Drawn	Date
AB	As Built Issue	GR	10/10/11
C1	Construction Issue	GR	12/09/10
T4	Revised BC Issue	GR	18/05/09
T3	BC Issue	GR	18/05/09

Maidstone Museum & Bentil Art Gallery  
**East Wing Development**  
Proposed Ground Floor Plan  
Fire Strategy  
Scale 1:100  
January 2009

Draw N° 126/GA-50  
Drawn by GR  
Checked by  
Size A1

Rev AB

HUGHBROUGHTONARCHITECTS  
41a Beaver Lane, London W6 9BL  
T 020 8735 9959 F 020 8563 3891 E info@hbaarchitects.co.uk

© Hugh Broughton Architects