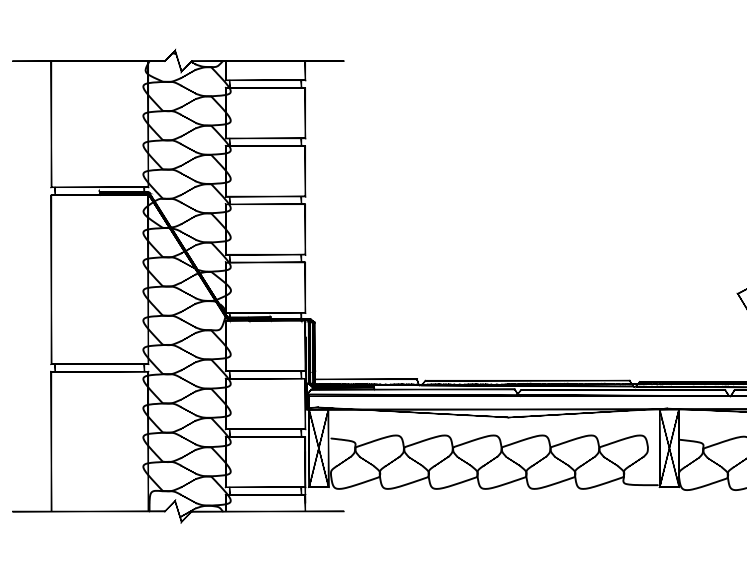


Welsh Slate
+44 (0) 1248 600656 www.welshslate.com

Side Abutment Detail
Penrhyn Heather Blue 500x300 County 7mm



Turn underlay up the abutment by min. 100 mm

Cut slates and extra wide slates where necessary to maintain bond.

Interleave with Code 3 lead soakers (length= gauge + headlap + 25 mm) minimum width to allow 100 mm cover below the slates and 75 mm vertical upstand.

Make weathertight with Code 4 lead cover flashing in max lengths of 1500 mm and sufficient width to overlap the soaker by minimum 75 mm after cutting to any steps in brickwork.