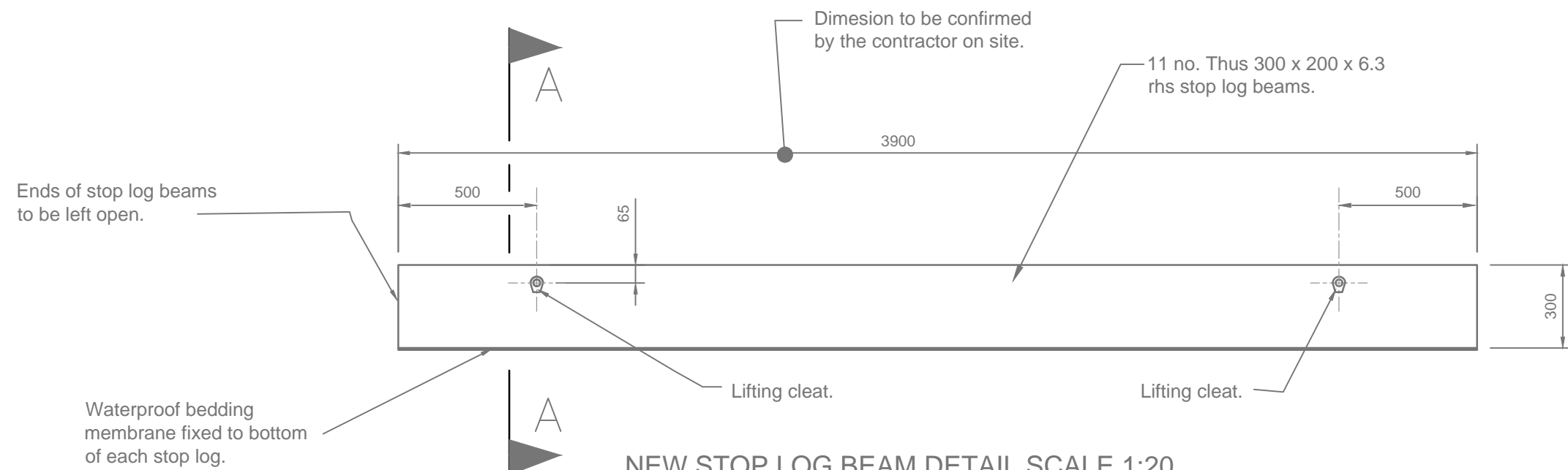


EAST SIDE SECTIONAL ELEVATION SCALE 1:20



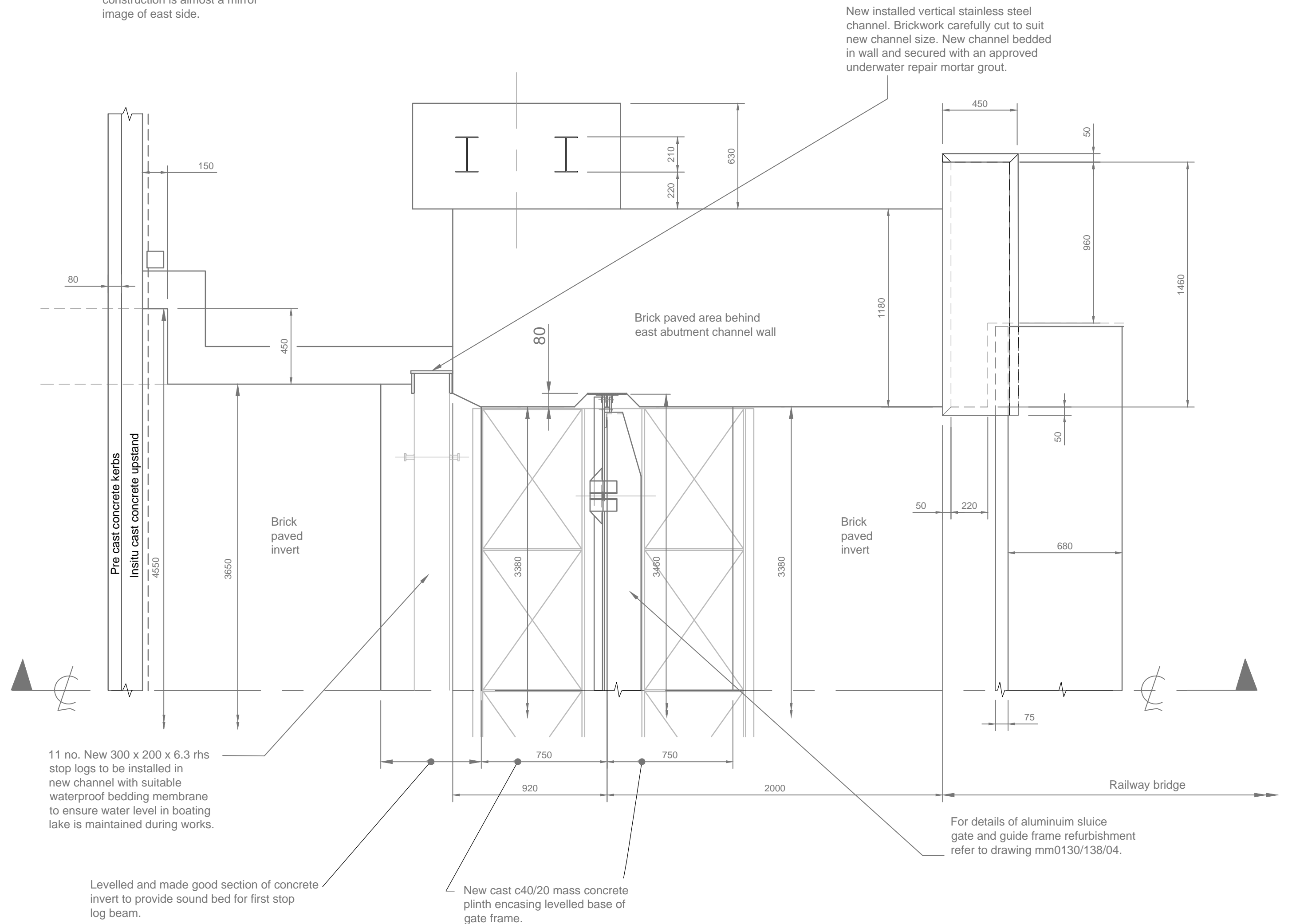
Notes

following fabrication stop log beam to be hot dip galvanised 140µm thick in accordance with bs729 or en iso 1461.

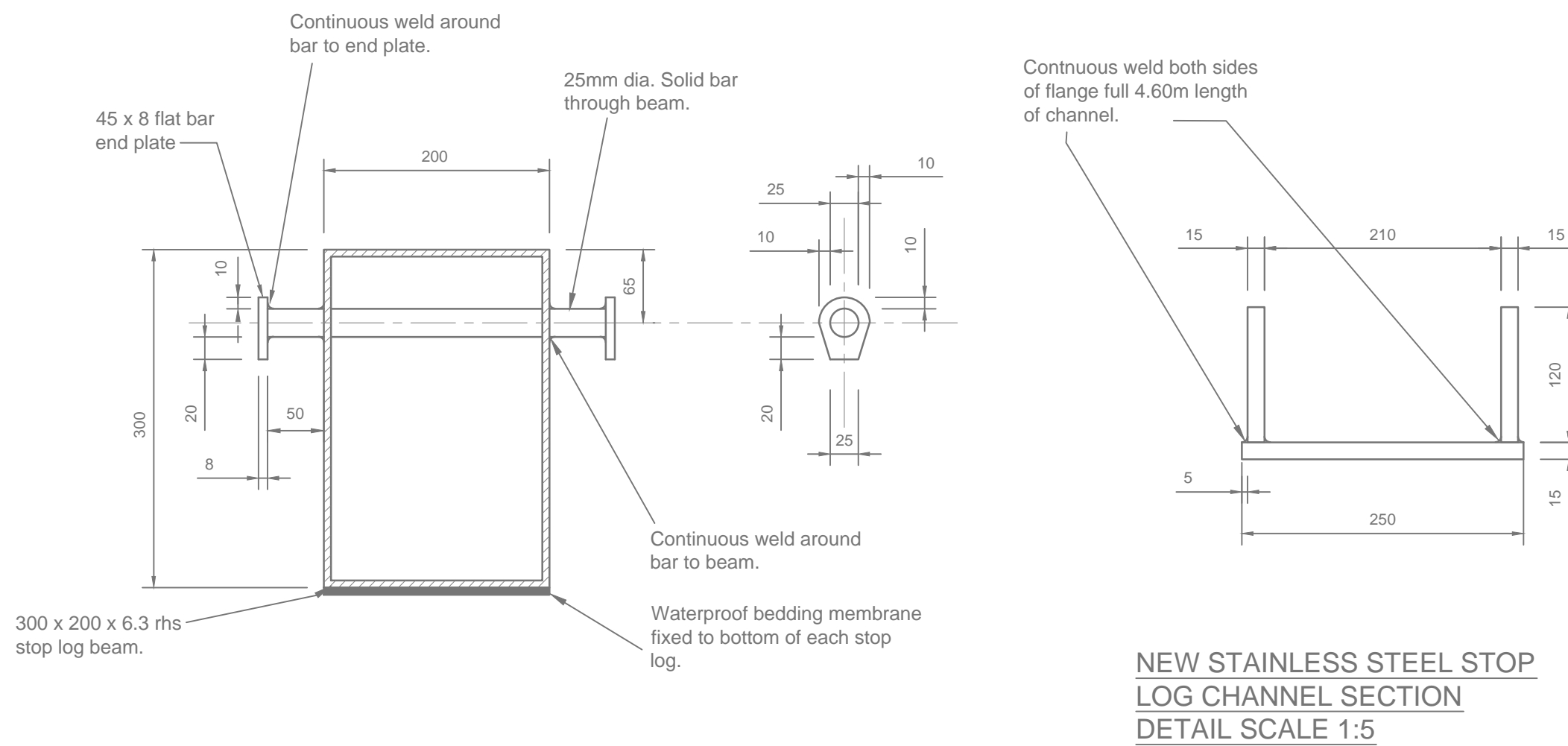
Should any beam require site trimming to fit, cut surfaces are to be filed to remove burrs then treated with galvalroid or similar approved galvanising paint.

Note

west side gate/channel/bridge construction is almost a mirror image of east side.




EAST SIDE PLAN OF SLUICE GATE SCALE 1:20



SECTION A-A STOP LOG LIFTING CLEAT DETAIL SCALE 1:5

Notes

- Do not scale from this drawing
- Dimensions to be confirmed by the contractor on site
- This drawing to be read in conjunction with drawings:- JS2600/138/01, 02, and 04.

Revisions	No.	Drawn	Date
<div>Borough of Poole</div> <div>Transportation Services J.C.RICE BSC (Hons), C.Eng, MICE Engineering Manager</div>		<div><div>Borough of Poole</div></div>	
SCHEME			
HIGHWAY STRUCTURES UNDERWATER SURVEYS			
TITLE			
BOATING LAKE FOOTBRIDGE STRUCTURE No 138 SLUICE GATE STRUCTURE			
DATE	DRAWN	CHECKED	
JUL 2016	JC		
SCALES	SIZE	SECTION	
AS SHOWN	A1	ENG	
DRAWING NUMBER			
SCHEME	DRAWING	VARIANT	
JS2600	138/03		