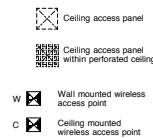
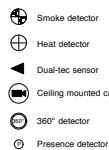


Do not scale drawings  
All dimensions are in millimetres unless stated otherwise  
Use figured dimensions only and report any discrepancies in writing to the architect

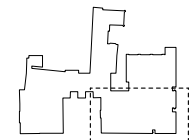
#### Key



#### Key to lights (refer to M&E specification)

- 1A Plaster-in linear light, length 5000mm, width 60mm
- 1B OMITTED
- 1C Plaster-in linear light, length 4200mm, width 60mm
- 2 Linear continuous fluorescent with 3D offset, suspended 1000mm off FCL
- 3 Trimless adjustable downlight
- 4 To be confirmed
- 5 Square plaster-in light, 150mm square
- 6 Ceiling mounted fluorescent luminaire
- 7 Surface mounted fluorescent batten
- 8 Suspended fluorescent batten
- 9 Wall mounted linear fluorescent fitting (Type L5 - M&E spec), length 1200mm
- 10 ~~Plaster-in light~~ - OMITTED
- 11 Emergency fitting (Type S - M&E spec)
- 12 Surface mounted linear fluorescent luminaire
- 13 ~~Linear recessed downlight~~ - OMITTED
- 14 ~~Trimless adjustable downlight~~ - OMITTED
- 15 Track Luminaire System, suspended
- 16 Track Luminaire System, recessed

#### Key Plan



Rev	Description	Drawn	Date
AB	As Built issue	GR	10/10/11
C3	Location wireless access points added	GR	11/08/11
C2	Bentlif 2 ceiling amended	GR	10/10/10
C1	Construction Issue	GR	13/09/10

Maidstone Museum & Bentlif Art Gallery  
**East Wing Development**

Proposed RC First Floor Plan - Zone 1  
Status: As Built  
Scale 1:50

July 2010

Draw N° 126/ GA-63 Rev AB

Drawn by IS Checked by GR Size A1

HUGHBROUGHTONARCHITECTS

41a Beaver Lane, London W8 9BL  
T 020 8735 9959 F 020 8563 3891 E info@hbarchitects.co.uk

© Hugh Broughton Architects